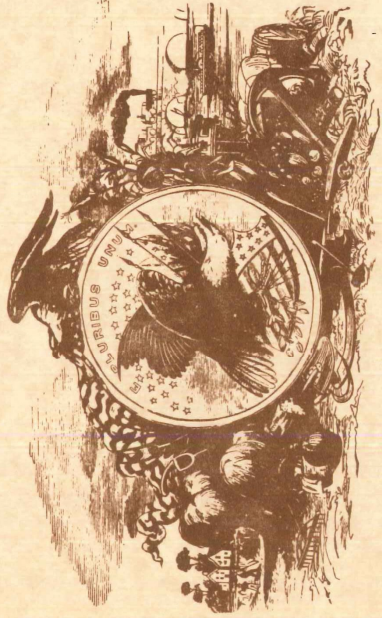


ATLAS

OF



CALDWELL COUNTY, MISSOURI.

BY
W. P. BULLOCK

1897

HISTORICAL
ATLAS

—OF—

CALDWELL COUNTY,
MISSOURI,

—BY—

W. P. BULLOCK.

1897.

—

ST. JOSEPH, MO.
PRESS OF LON. HARDMAN.

HISTORY OF CALDWELL COUNTY.

Caldwell, which is bounded on the north by Daviess County, on the east by Livingston, south by Ray and west by Clinton County, has a total area of 432 square miles of the most fertile and productive land included in the great Louisiana Purchase of 1803.

This purchase was negotiated by James Monroe, who was at that time Minister Plenipotentiary to France, during the illustrious administration of Thomas Jefferson. This county was organized on the 26th day of December, 1836, with the county seat at Far West, to which place the records were removed from Richmond in Ray county. Just prior to the county organization, the Mormons (or Latter Day Saints), began settling in the vicinity of Far West, which had been chosen by their leader, Joseph Smith, as the Garden of Eden, to which he had been directed by divine guidance. They began the erection of a large and commodious temple, devoted to their peculiar religious worship, but their efforts were not crowned with success, and like the Tower of Babel, was abandoned through the dissensions caused by jealousy and excessively enforced authority. Through the anarchy and lawlessness of the Army of Zion, organized to protect the Mormons from Gentile abuses, they aroused the most intense hatred against themselves, which was the ultimate cause of their immigration to a more western and remote district, which followed during the years of 1838-39.

Following in the wake of the Mormons, like sunshine after showers, came the honest and industrious settlers from North Carolina, Virginia, Tennessee, Kentucky, Indiana and Ohio, underneath whose steady stroke the forest fell, and the cheerful smoke from the colonial cabins commingled itself with the silver tinted clouds of heaven. The human mind is incapable of grasping the great stride in civilization made in this county. In the mere lapse of sixty years, where then wandered the Indian in pursuit of buffalo, now feeds the fat and winding herd. Studded here and there, like gems, rise the chimneys of the modest school house, usually presided over by a charming little teacher of man's favorite gender. There are one hundred public schools in the county, which are supported to a great extent by the interest accruing from the safe invested school funds, amounting to more than \$75,000.

No where could man find a more delightful climate or fertile soil than in this beautiful rolling prairie. Almost without an exception the people are refined and cultivated; honesty and industry are the only qualifications necessary to entitle one to their friendship and hospitality.

Hamilton, the largest city in the county, is situated on the Hannibal & St. Joseph Railroad, fifty miles east of St. Joseph. The population numbers about 2,100 souls, and is rapidly progressing. A splendid high school and seven churches are among the many advantages afforded by this remarkable city.

Breckenridge, a beautifully located city, with many solid blocks of business houses and 1,000 progressive inhabitants, is located in the northeastern corner of the county, and is surrounded by a fertile and productive country. The Hannibal & St. Joseph Railroad offers unexcelled facilities for this trading center.

The town of Kidder is situated in the northwestern corner of the county, and has a population of 500 people. The Kidder Institute, an institution devoted to the instruction of those to whom nature has bequeathed a mind and not a fortune, is situated at this place. Many noble and brilliant men and women have been launched upon the broad sea of life by the strong arm of this institution.

Kingston, county seat since 1843, is situated at the terminus of the Hamilton & Kingston Railroad. Built almost in the center of the county, and in the fertile valley of the Shoal Creek, it has been the convenient and accessible point from all directions. The first court house was built in 1844, and was constructed of logs; it was replaced by a two story brick building in 1847. This building was destroyed by fire in 1860, and at once a better and more commodious building was erected, which was used until the 28th of November, 1896, when again the building was burned. No valuable records were destroyed in either of these conflagrations. Kingston has a population of 800 industrious and hospitable people, a splendid high school and four churches.

Braymer, a young giant of progress, situated in the southeastern corner of the county, has a population of 1,300. Owing to the remarkable fertility of the surrounding country and the railroad facilities offered by the Chicago, Milwaukee & St. Paul Railroad, the town bids fair to rival in a few years many of a larger population today.

Cowgill is situated on the Chicago, Milwaukee & St. Paul Railroad, in the southern part of the county, and is blessed with a beautiful locality and a population of 600.

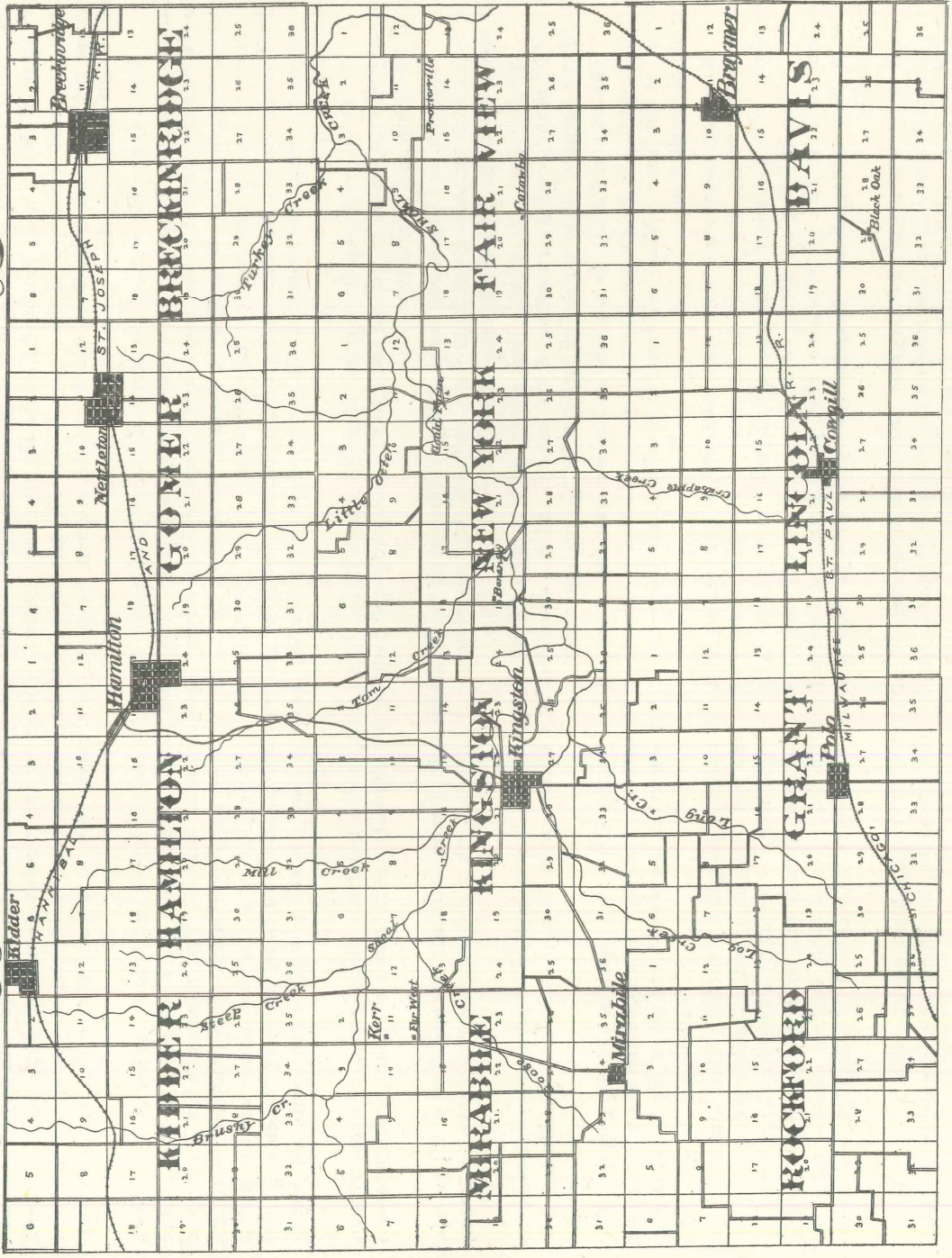
Polo is centrally located for a vast amount of business from its fertile surrounding country. Situated as it is, in the southwest corner, there is little competition for business from other places. Polo can boast of 600 inhabitants of pleasant and progressive people.

Mirabile is located in the western part of the county, seven miles from Kingston, and has a good school, many churches, and a brass band among the many other notable features.

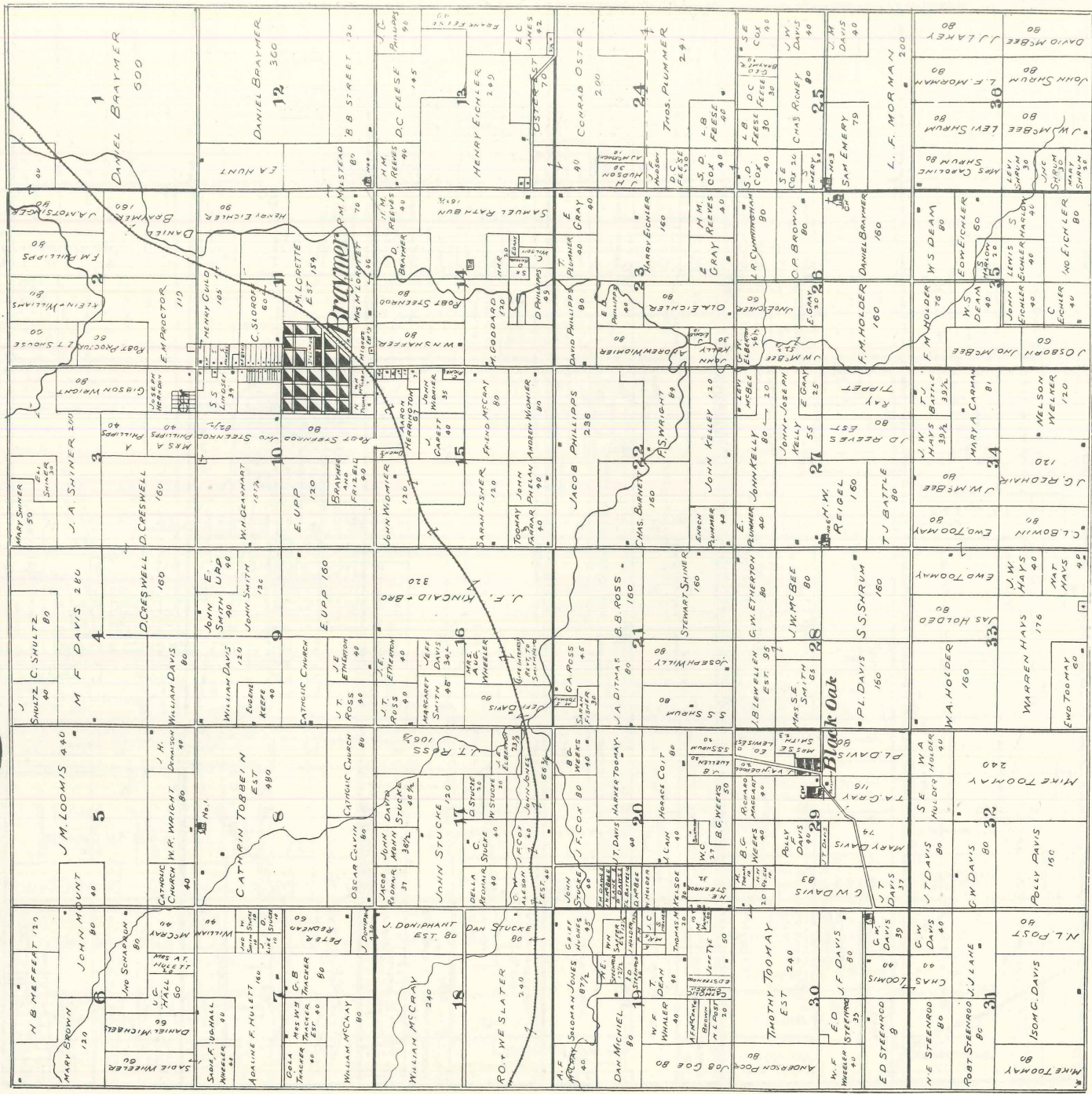
Now in conclusion, I will thank the many kind people I have met, for their liberal patronage and support to this publication, which I hope will not only be appreciated for its own value, but for my earnest effort to place on paper a few of the many virtues of a land I know and love.

WILLIAM P. BULLOCK.

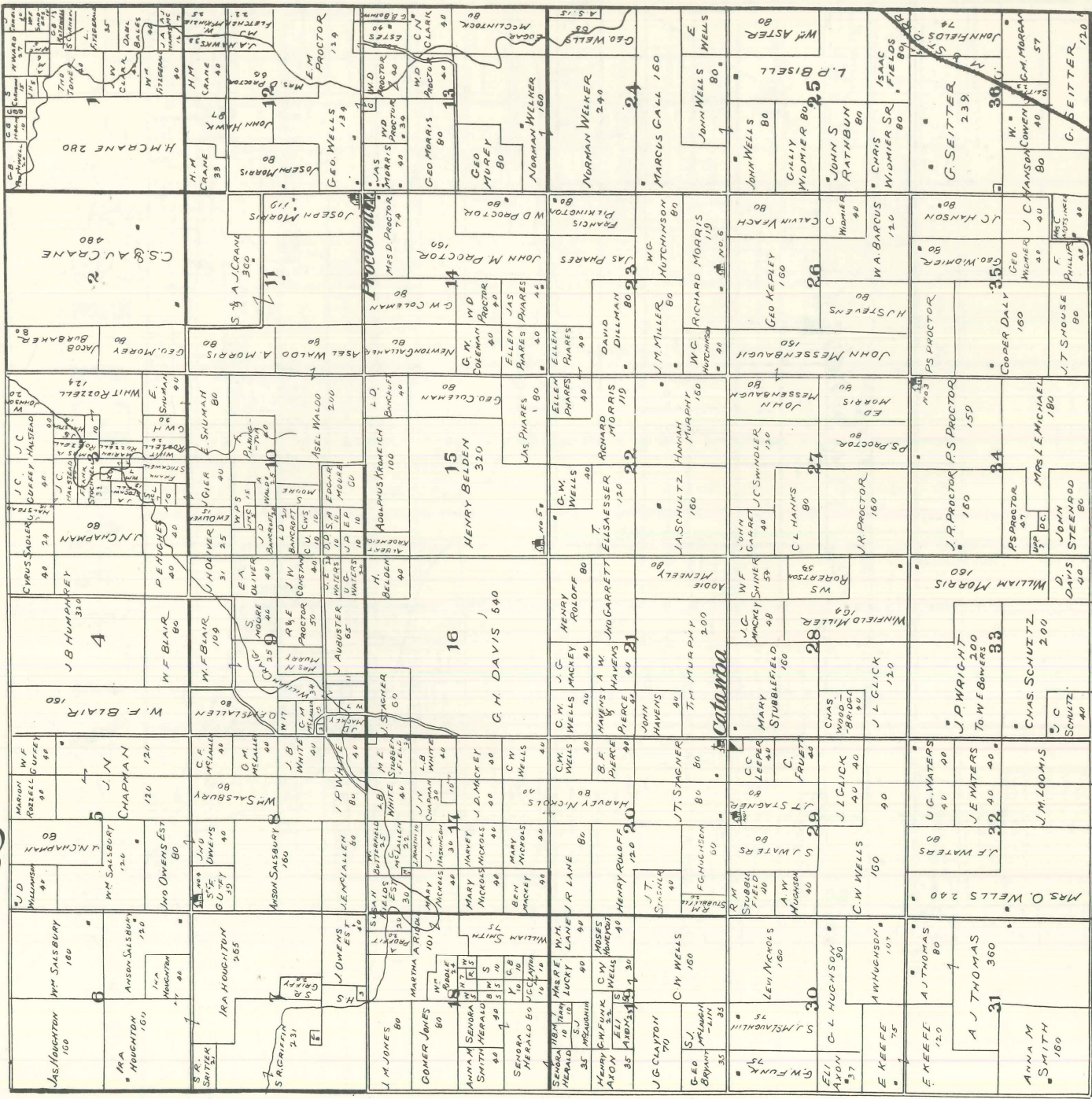
SPECIAL MAP OF CANTONVILLE



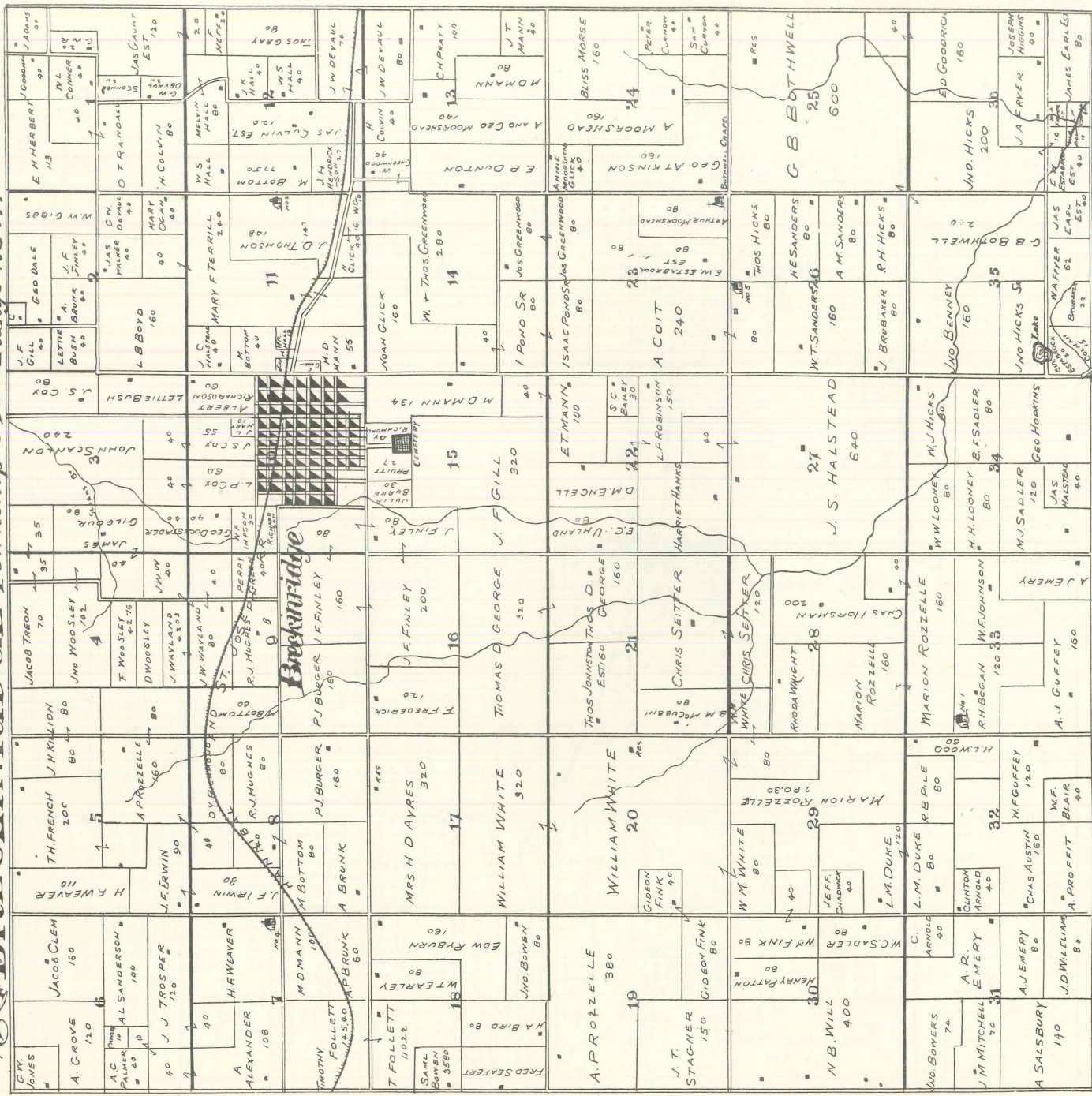
MAP OF BAY IS, Township 55 N. Range 26 W.



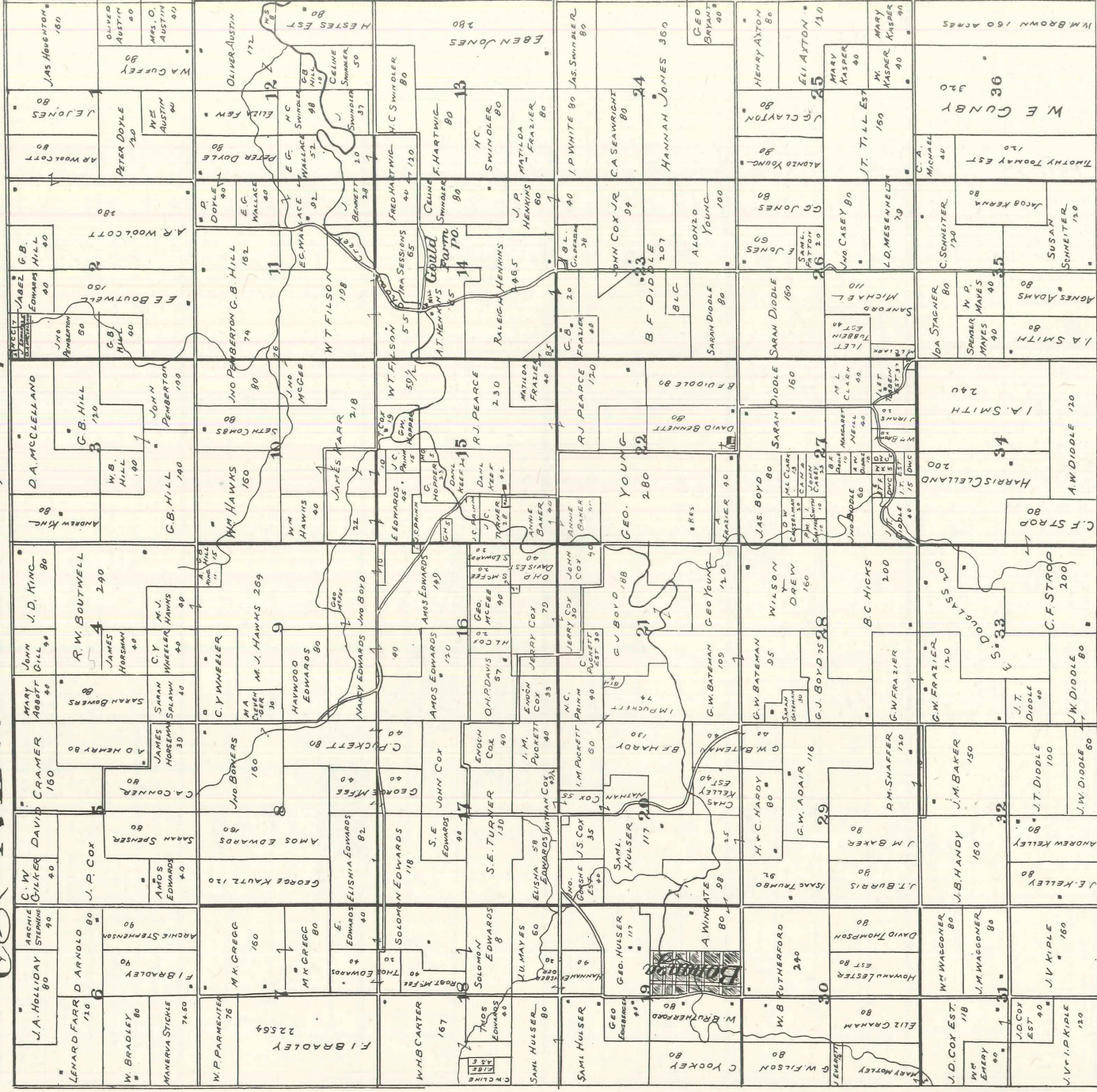
MAP OF FAIRVIEW, Township 56N, Range 26 W.



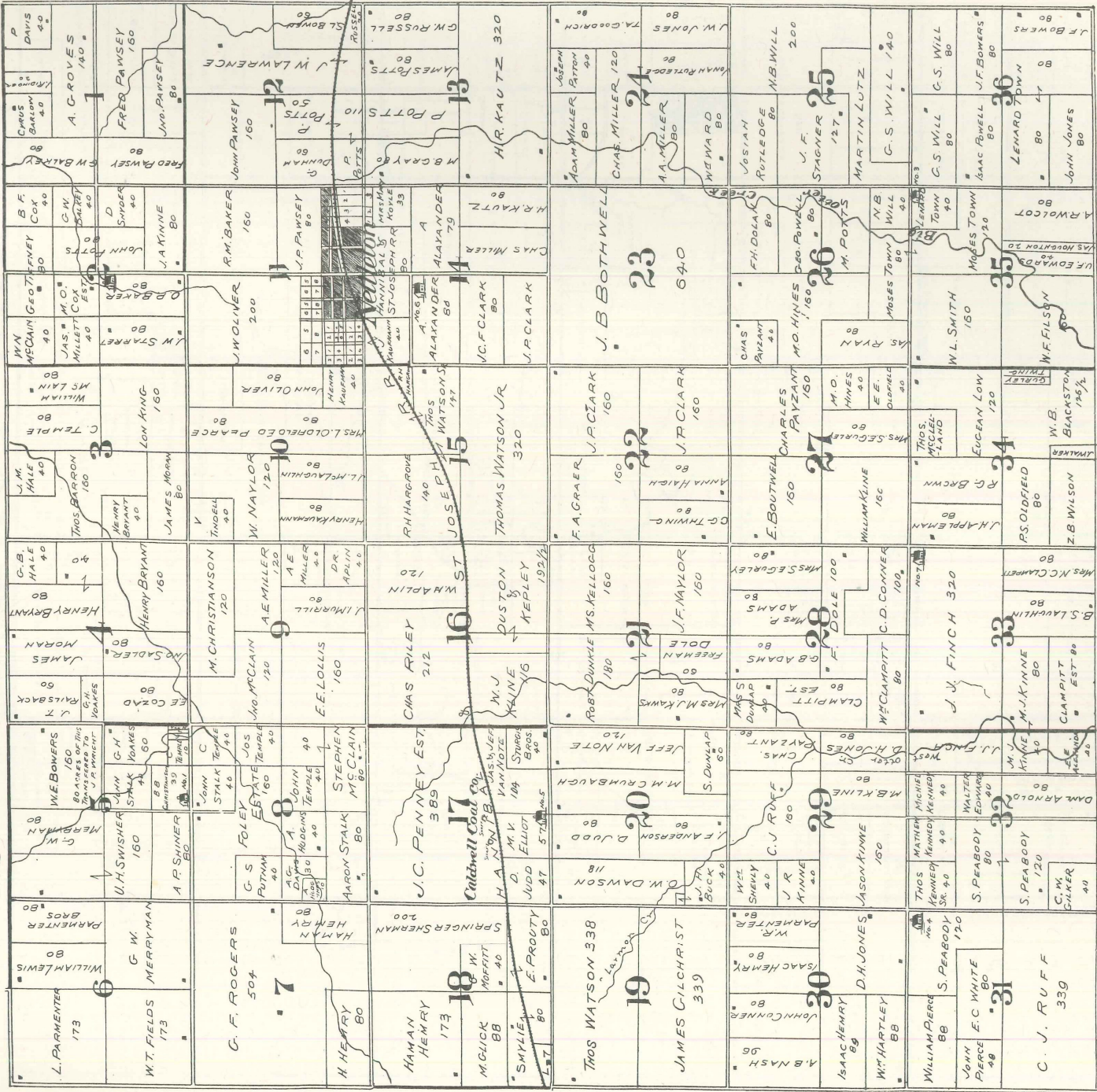
MAP OF BRECKINRIDGE Township 57 N. Range 20 W.



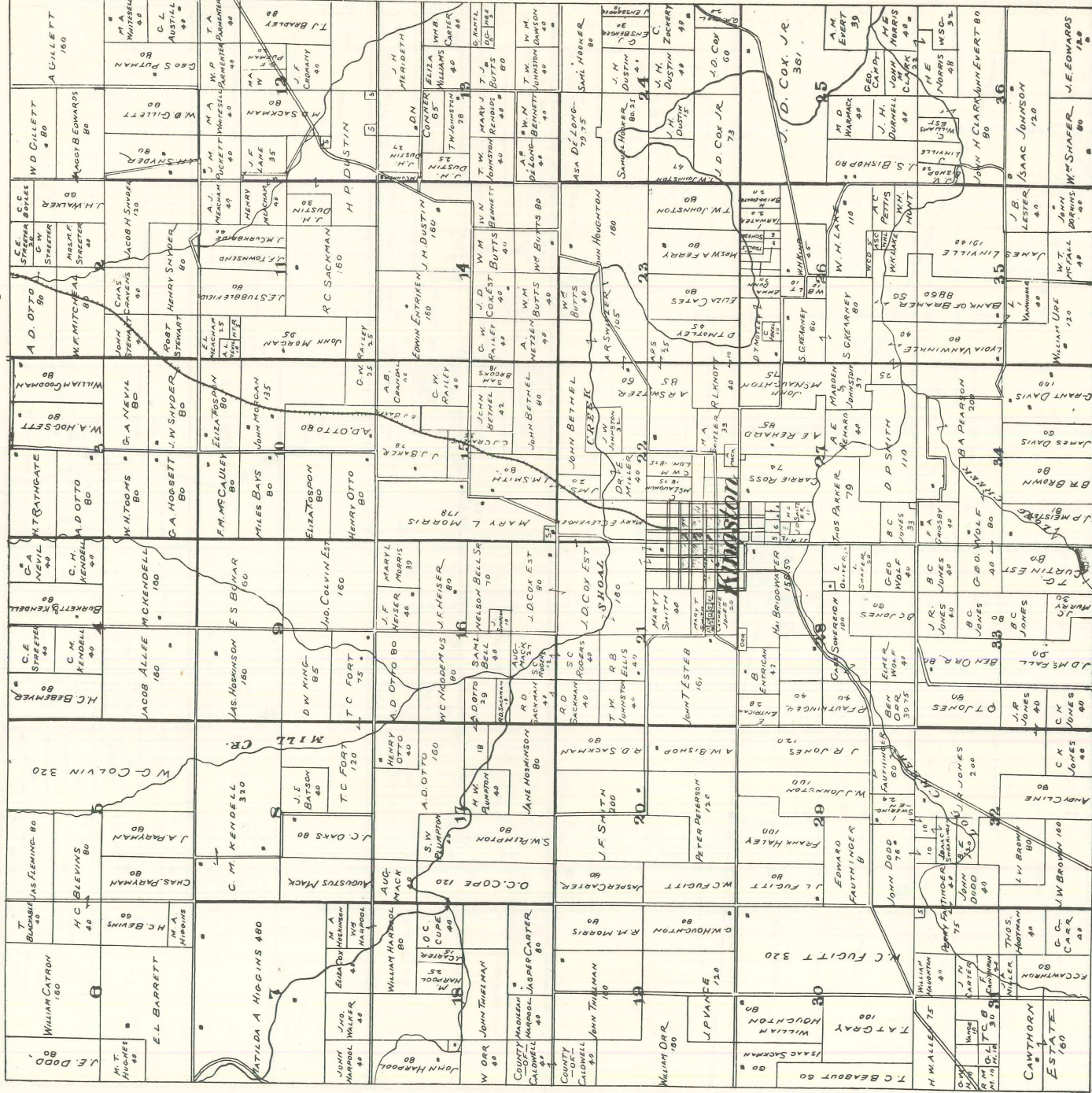
MAP OF NEW YORK Township 56 Range 27 W.



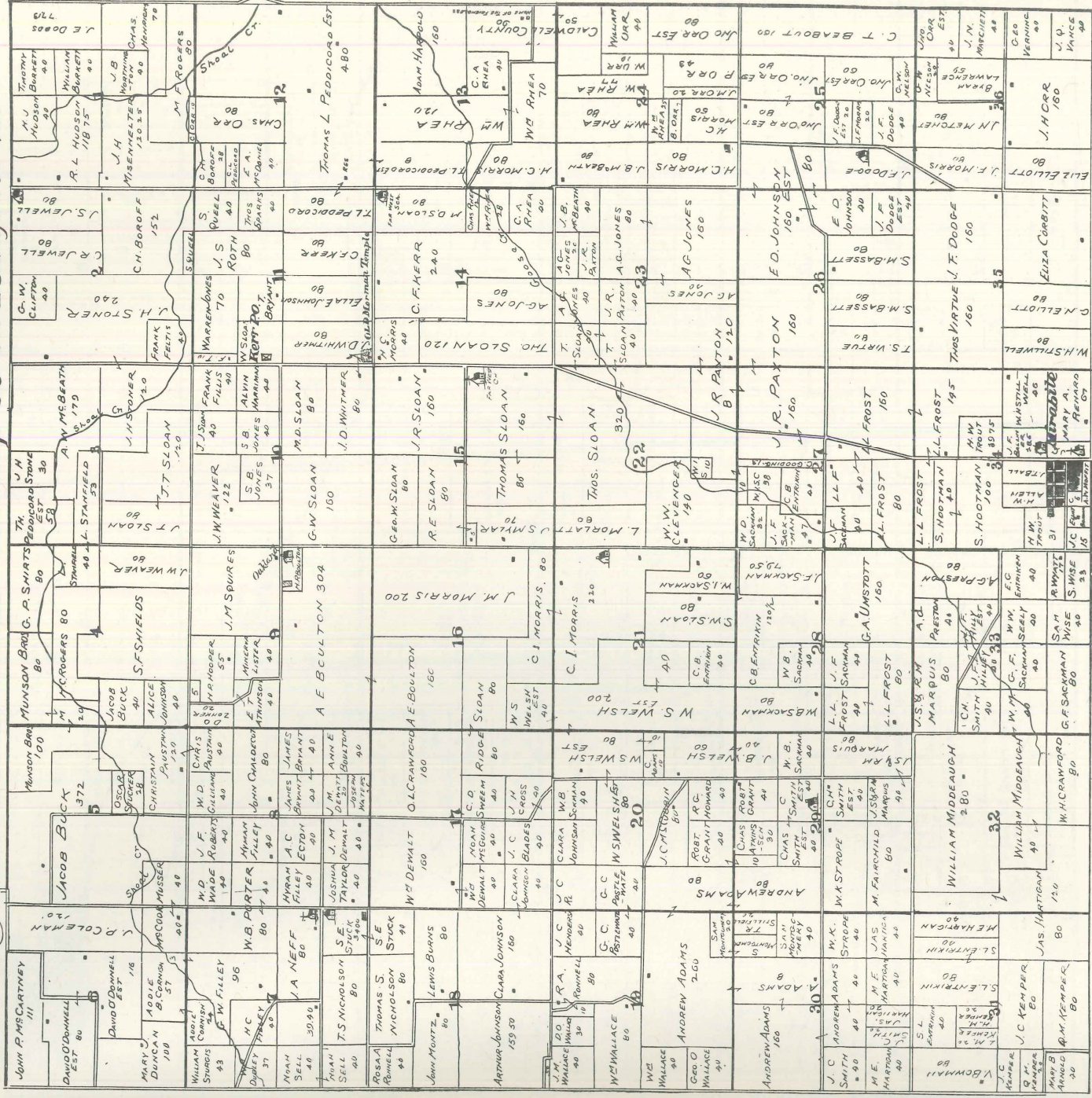
MAP OF **COMER**, Township 57, Range 27 West



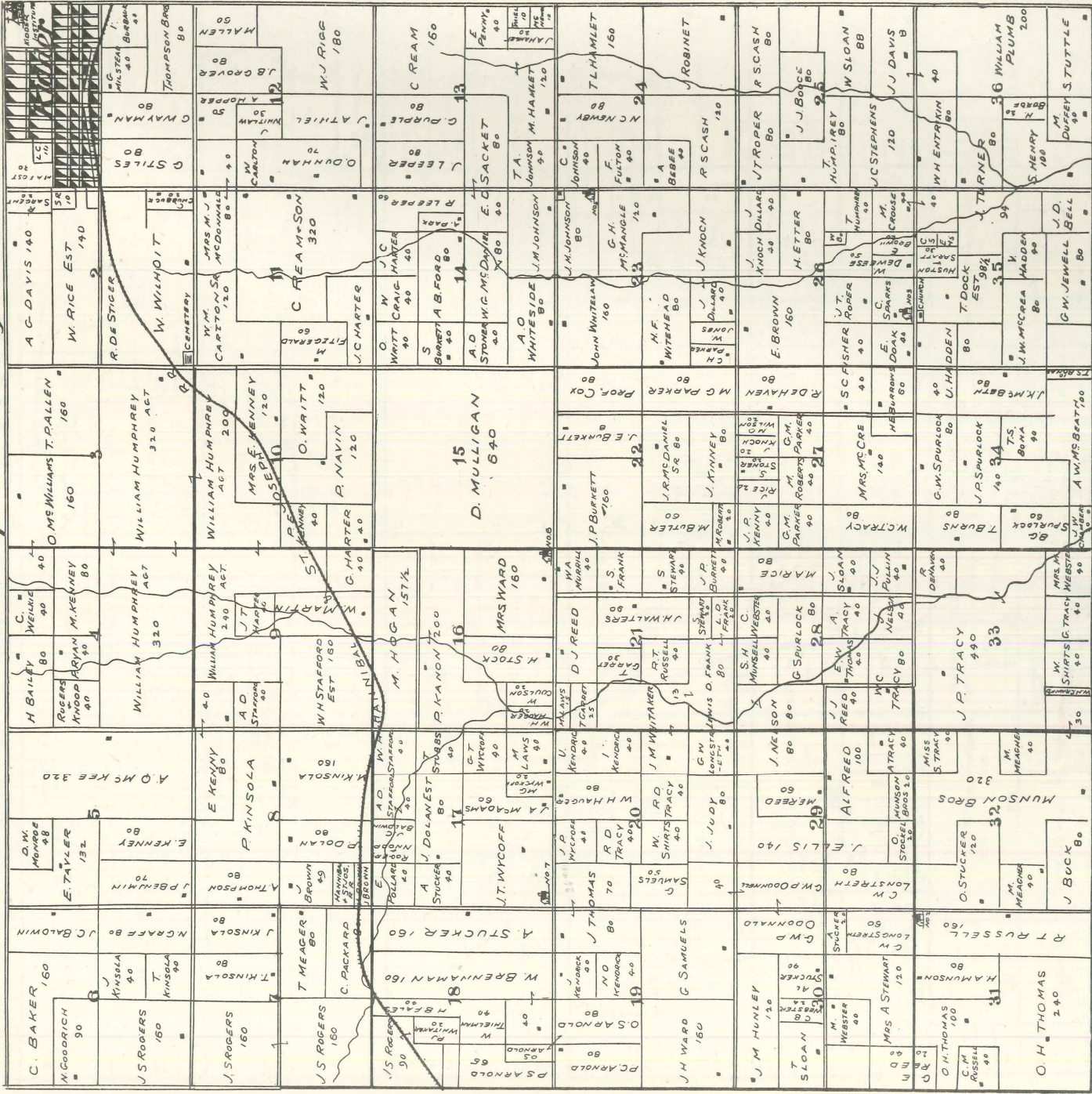
MAP OF **KINGSTON**, Township 56 N. Range 28 W.



MAP OF MIRABILE Township 56 N. Range 29 W.



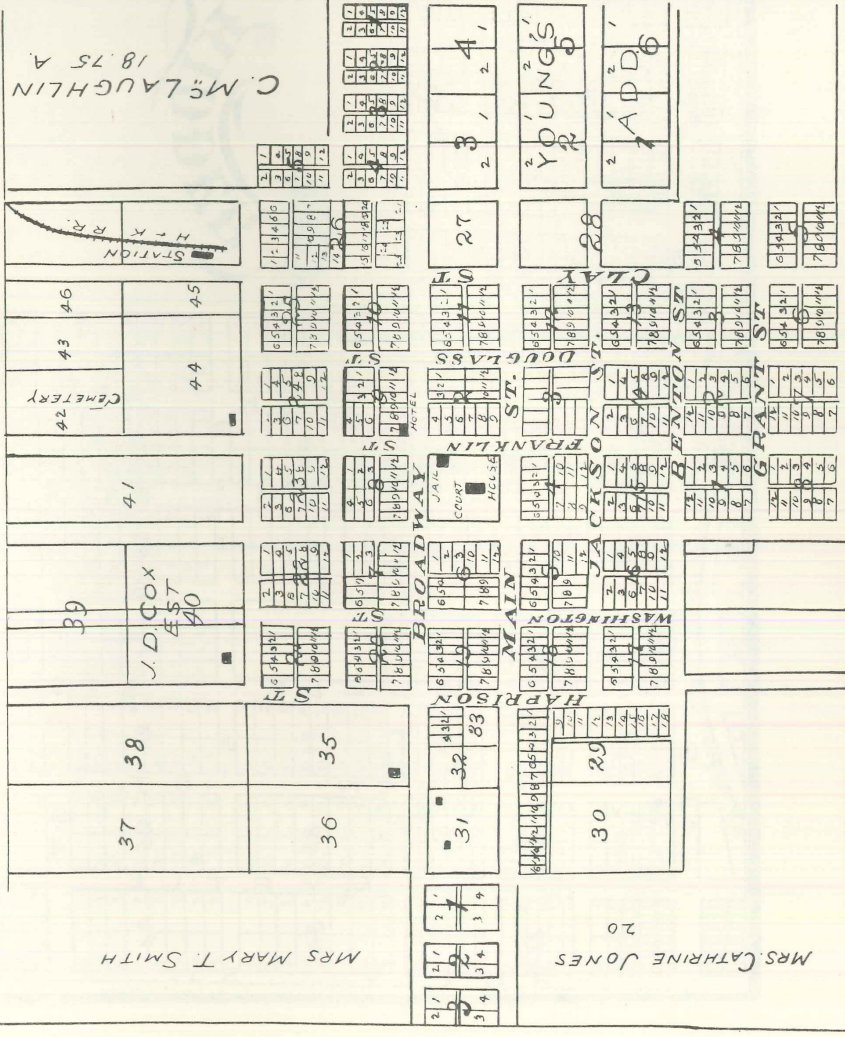
MAP OF THE **KIDDER** Township 57 N. Range 29 W.

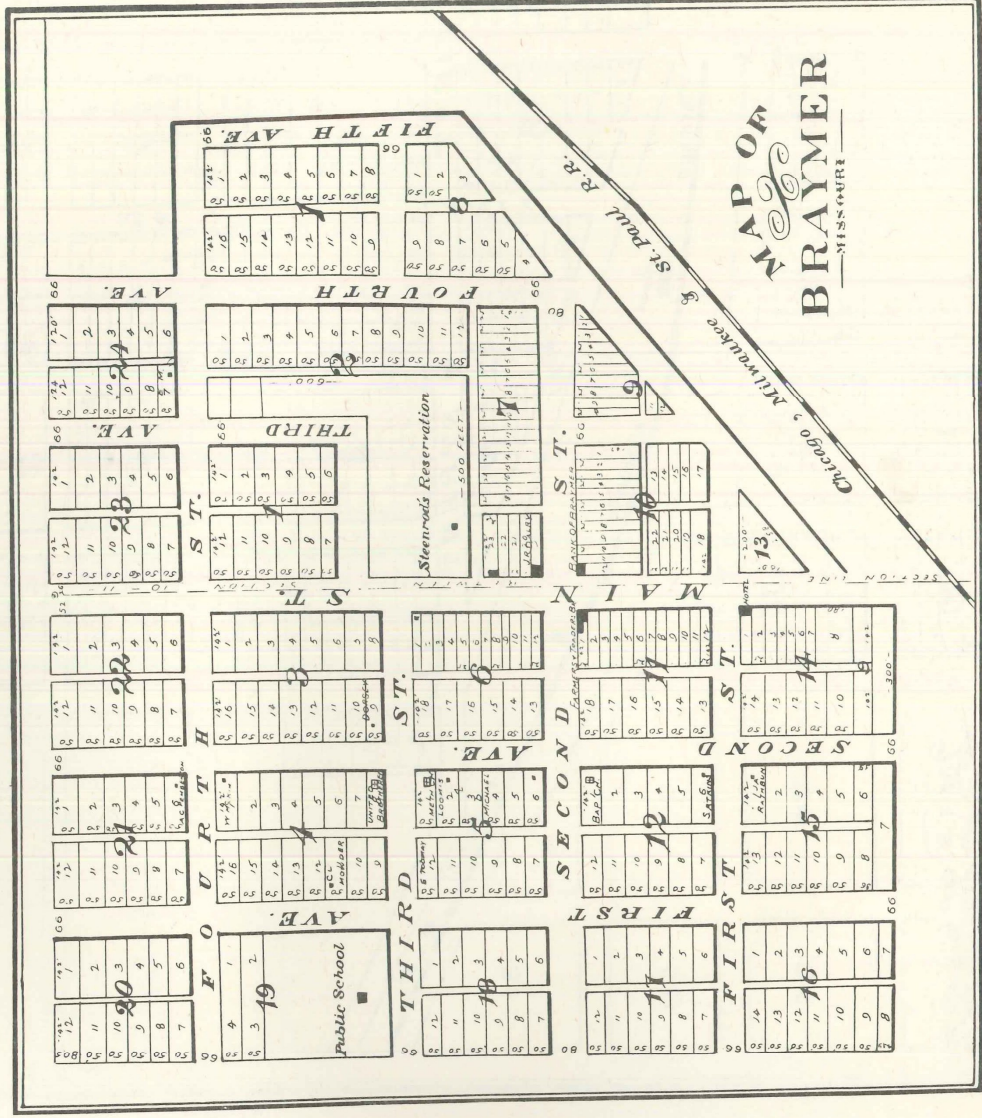




KINGSTON

The County Seat



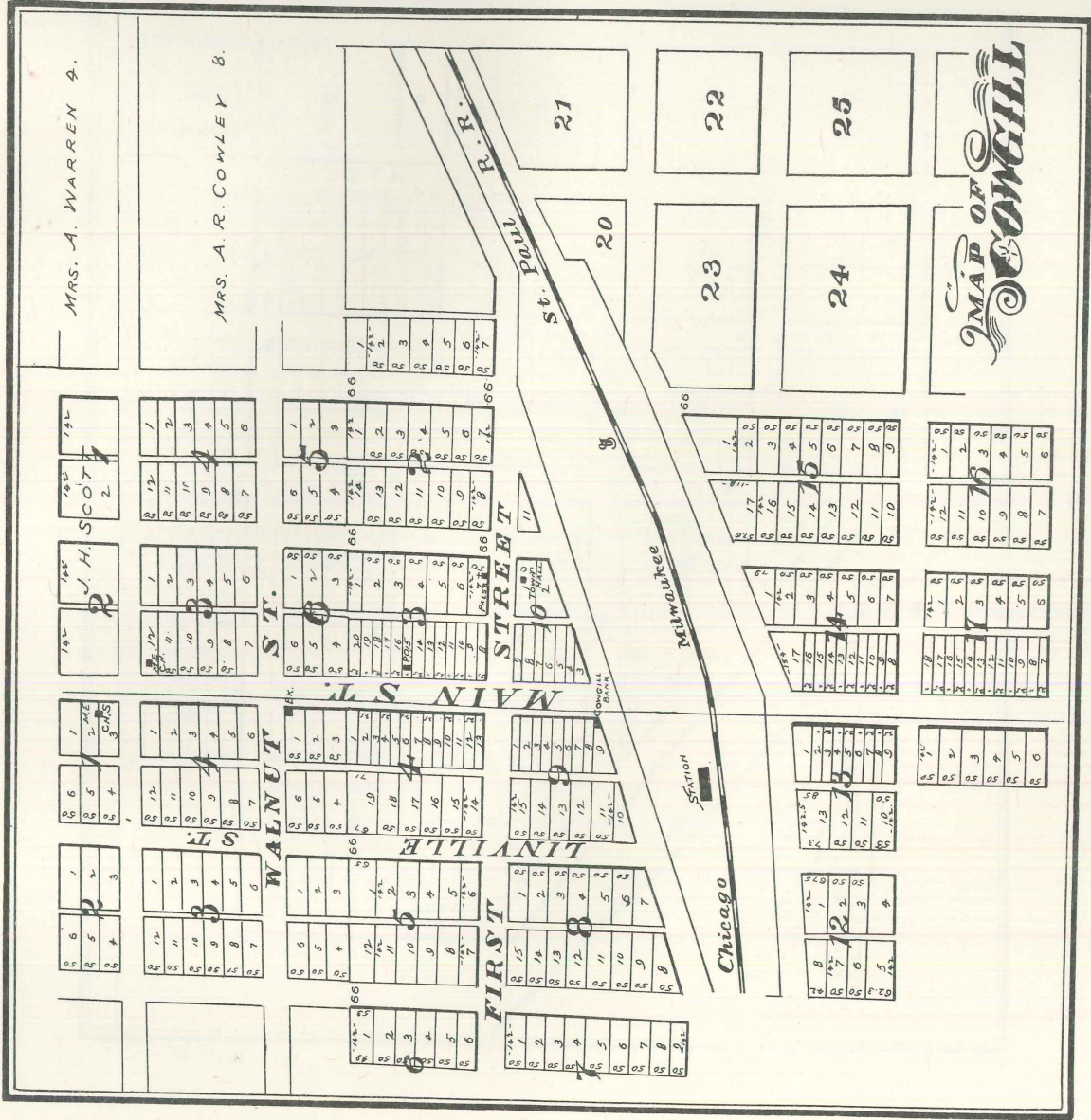


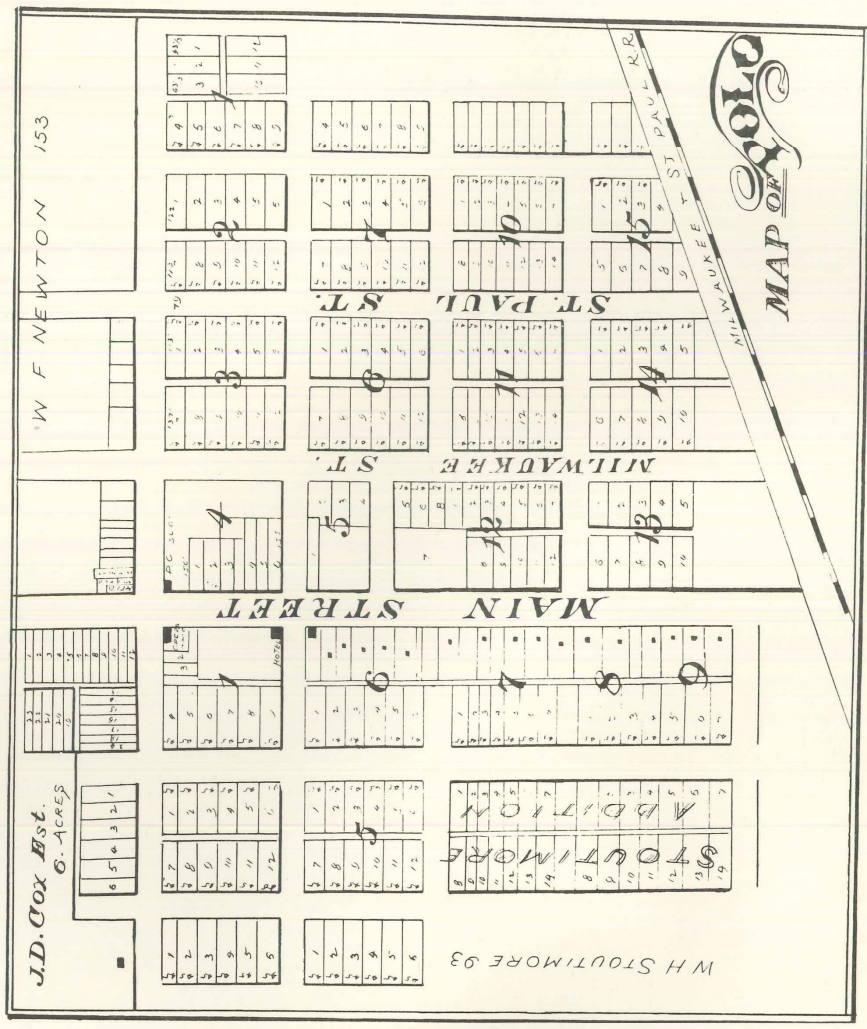
MAP OF
BRAYMER
 MISSOURI

Chicago, Milwaukee & St. Paul R.R.

SECTION 13

300-





QUALITY PRINTING CO.
Cameron, Mo.
Jan. 1983