

## *Talent for 1915 Assembly*

Dr. W. D. Agnew, Platform Manager  
Prof. Rutherford's Chautauqua Band  
Mrs. Boal, Domestic Science

### LECTURERS

Henry A. Adrain  
Dr. P. Marion Simms  
Pres. James A. Burns  
W. I. Nolan  
Chancellor George H. Bradford  
Hon. James A. Reed  
Hon. William H. Murray  
Hon. Frank H. Farris  
Hon. J. Whitcomb Brougher

### ENTERTAINERS AND CONCERT COMPANIES

The Riheldaffer-Skibinsky Company  
L. A. C. Orchestra  
Parker Company  
The Pierces  
Walter Eccles and the College Girls  
Cap's Orchestra  
Hampton Court Singers  
Ye Old Folks Choir Concert Company  
Chas. R. Taggart

1915 Assembly

# Great Cameron Chautauqua



**JULY 31**  
**AUGUST**  
1, 2, 3, 4, 5, 6, 7, 8

CHAUTAUQUA PARK  
Southern Suburbs

CAMERON  
MO.

DR. W. D. AGNEW,  
PLATFORM MANAGER

F. B. KLEPPER,  
PRESIDENT

C. S. KEMPER  
SECRETARY

DAILY NEWS PRINT

*Betty King Demar*





THOS. J. ZOOK  
President and Gen. Mgr.  
Cattle Salesman

Nothing Succeeds  
Like Success

BOTH PHONES MAIN  
6899

FOR THE BEST  
SERVICE, SALES and  
NET RESULTS

Consign your Cattle  
Hogs and Sheep to



LOUIS E. BOYCE  
Vice-P., Sec. and Treas.

# ZOOK & ZOOK

Live Stock Commission Co.

Capital \$25,000.00



AMOS B. BACHMAN  
Cattle Salesman



JAS. ZOOK RUTHERFORD  
Head Yardman



WESLEY IRONS  
Cattle Salesman and  
Feeder Buyer



SHIRLEY GLASSCOCK  
Cattle Salesman



CHAS. A. WELCH  
Hog Salesman



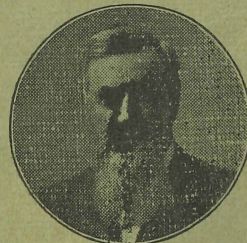
JOHN S. MAYES  
Cattle Salesman and  
Feeder Buyer



CHAS. B. MITCABLL  
Cattle Salesman



OSCAR (DICK) GREEN  
Sheep Salesman



SAM. C. PALMER  
Feeder Buyer

EVERY ONE A HUSTLER. Competent Salesmnn in Each Department.  
Also buy on orders. Give us a Trial and you will have money to lend  
and money to spend. Rooms 410-408-406 Live Stock Exchange.  
STOCK YARDS STATION, KANSAS CITY, MO.

Call No. 7, or Mutual 24—

When you want a case of

## Soda Water

OF QUALITY

Cameron Bottling Works

Established 1883

Still at It

### REED THE TAILOR

Phone 98

The ONLY Way is the

FLORENTINE SYSTEM

If your work cannot be done satisfactorily, we will tell you so; no work half way done, and no apologies to offer. Try us once and you will be our customer. Popular prices. Goods called for and returned. The only cleaning and pressing in the city by the "Florentine" System.

Up by the Big Clock.

## Palace Barber Shop

SEVEN HAIR CUTS and NINE SHAVES  
LEFT

Hurry and see us.

ED NICHOLAS, Prop.



# The Cameron Chautauqua Association

ASSEMBLY OF  
1915

JULY 31 TO AUGUST 8 INCLUSIVE

## OFFICERS

PRESIDENT—F. B. Klepper.  
FIRST VICE-PRES.—M. L. Bowman.  
SECOND VICE-PRES.—Louis Quell.  
THIRD VICE-PRES.—J. B. Russell.  
TREASURER—E. A. Hale.  
SECRETARY—C. S. Kemper.  
FINANCIAL SECRETARY—H. F. Lawrence.

## COMMITTEES

**Program**—S. D. Thompson, H. Ziegenbein, W. C. Urban, J. C. Carr, J. B. Mynatt, William Grant, F. B. Klepper.  
**Advertising**—S. H. Hulsizer, C. S. Estep, V. R. Neff, Sherman Sloan, E. Steiner.  
**Grounds and Privileges**—C. A. Gross, S. L. Evans, J. C. Downing.  
**Tents and Accessories**—C. S. Kemper, Louis Quell, E. E. Shaw.  
**Reception**—J. S. Moore, Chas. Jones, E. T. Harris.  
**Transportation**—T. L. Wiley, W. Moss Jones, T. Edward Deem.  
**Police**—G. A. Umstott, I. J. Garvin, M. L. Bowman.  
**Finance and Auditing**—I. D. Cottey, H. B. Cooper, J. A. Rathbun.  
**Membership**—M. S. Bonham, Thomas Fiddick, R. E. Seaton, John H. Groves.

So  
lived on Chestnut  
just past Prospect

Arthur Klepper  
was CTS Librarian  
in 1950 - 54



# A GOOD BANK

FROM WHICH IT MAY BE WITHDRAWN  
AT ANY MOMENT, IS

*the best place for  
money*

WHICH YOU MAY WANT AT ANY  
MOMENT.

Our depositors know that they can get  
their money on demand, and that it is safer  
here than it would be in their own custody.

Become a Depositor With the

**First National Bank**  
Cameron, - - - - - Missouri

# DeShon & Son

*Feed, Fuel and*

*Implements*

*Sewer Pipe*

Opposite Burlington City Station

PHONES:

City 675

Mutual 144

### The History of Our Chautauqua.

The history of our Chautauqua dates back to August 20, 1909, when pursuant to call many citizens met at the big tent on Chautauqua grounds, where The Redpath Chautauqua was in progress. Temporary officers were elected and later on, August 24, 1909, at the Y. M. C. A. Hall, a permanent organization was effected by the election of a full Board of Directors, with S. D. Thompson as President and F. M. Filson, Secretary. A constitution and by-laws were adopted which were in full force and effect until August 15, 1912, when a re-organization was effected and steps taken to incorporate the Association, so that business could be conducted more safely, as the splendid success of the undertaking seemed a full guarantee of its permanency as an institution.

Each year has added zest and zeal to our Chautauqua and all our citizens act in complete accord in making it the best in Northwest Missouri.

The receipts for the five years, beginning in 1910, have been about the same, as following table will show:

1910.....	\$4,673.05
1911.....	5,385.30
1912.....	4,999.65
1913.....	4,924.26
1914.....	5,003.61

The management has adhered to the true Chautauqua idea, endeavoring to furnish programs of high moral tone. The morning hours are devoted to religious exercises, the afternoons to popular lectures, and the evenings to entertainment of various kinds, usually of a musical character, interspersed with Dramas, Readings and other light specialties.

The financial management has been careful and conservative and only in the year 1910 did we meet with a loss and that but slight, as we spent that year \$553.23 for permanent improvements, which with a loss of \$156.53, caused an assessment of \$5.00 per member, which was promptly and cheerfully paid, and was refunded out of the profits of 1911 and 1912 business.

We are now a regularly chartered institution, incorporated under State Law, and our investments are as follows:

Permanent improvements in 1911, buildings and water supply.....	\$555.23
Lands, 6 six fine lots bought in 1913.....	760.00
Plumbing, done in 1914.....	468.11
Appropriated for dining hall in 1915.....	450.00
Appropriated for addition to office, in 1915.....	50.00

Total expended, permanent improvements, \$2,261.34

A list of the stockholders and its personnel includes many of our leading citizens, who have ungrudgingly given their support through the past years, two of which were lean ones from a crop standpoint but successful ones for our enterprise.

Why do we succeed? Because we are united in sentiment and our Board and committees devote their time timent and our Board and committees devote their time except the enjoyment they get.

We start this year with enough cash on hand to construct the dining hall and an addition to the office, leaving a small cash balance, and with a carefully selected program that should appeal to the good taste of our people, the present year should be the best we have ever had. So we earnestly invite your hearty co-operation for this 1915 Chautauqua.



## N. L. ADAMS

Makes a specialty of

### Cloaks Ladies Ready-to-Wear

Dry Goods, Notions, Hosiery  
Underwear, Carpets, Rugs  
and Linoleums

119 E. Third Street

Cameron    --    Missouri

## NOREMAC

### PURITY PRODUCTS

*Are the best—try them—guaranteed.*

Extracts, Spices, Stock Food, Dip, Poultry Remedies  
Toilet Articles, Electric Oil and Family Remedies

**We Need Agents—Apply at Once**

**NOREMAC CHEMICAL CO.**

Cameron, Mo.

### GENERAL INFORMATION.

#### Department of Admissions.

Daily Admission, Adults: all day, 35c; evening, 25c.

Daily Admission, Children: all day, 20c; evening, 15c.

Regular Season Tickets **not transferable**, but good to come and go at will. If purchased and paid for by July 24th, Adults, \$2.00; children eight to fifteen years, \$1.00. After July 24th they will be \$2.25 and \$1.25 respectively. **No exceptions to this rule.**

**All tickets must be signed with ink by purchaser.**

Commutation Season Tickets, with nine coupons, each coupon good for one admission for any one at any time, adults \$2.50; children eight to fifteen years, \$1.50. Good to come and go at will but not sold after first day of Assembly. Children under eight years admitted free.

Teams admitted free to the grounds and provided with good water conveniently located.

Water for drinking purposes, iced and conveniently located for everybody. Regulations for entry and exit, location, hitching, etc., under control of Committee on Grounds and Privileges.

C. A. GROSS,  
Chairman.

#### Department of Police and Public Safety.

No objectionable character will be allowed on the grounds. Perfect order will be preserved. The management reserves the right to reject any and all persons infringing on any rules and regulations. Police protection will be ample. No side-shows, merry-go-rounds, gambling devices or other objectionable features will be permitted. Police protection day and night.

G. A. UMSTOTT,  
Chief of Police.



EVER EAT HERE?

**Interstate Restaurant**

GOOD COFFEE

Try our "Quality Bread"

Buckles Old Stand

**O. J. Munsell**

Plumbing and Heating

All work done promptly and satisfactorily.

See me for estimates.

210 Chestnut

Phone 47

**Wise & Shutt**

Grocers

*"We deliver the Goods"*

## The Cameron Chautauqua—July 31, Aug. 1 to 8.

**Railroad Facilities and Time Tables.**

No other chautauqua city in Northwest Missouri has our equal in railroad facilities. Two large trunk lines run through our city and give us service in every direction and at all hours day and night. All of the 44 trains carrying passengers stop at Cameron. We herewith publish the Time Tables for the two roads showing arrival and departure of trains at Cameron. Remember, the Chautauqua grounds are within ten blocks of all depots.

**Burlington Route.**

## WESTBOUND.

	Lv. City Depot		Lv. Union Depot
1—Pass.....	7:50 a. m.		Kan. City.....8:00 a.m.
3—Pass.....	1:50 p.m.	}	St. Joseph.....2:05 p.m.
			K. City.....2:04 p.m.
43—Pass.....	4:57 p.m.	}	Kan. City.....5:12 p.m.
			St. Joseph.....5:08 p.m.
15—Pass .....			St. Joseph .....10:28
17—Pass .....	5:07 a.m.	}	Kan. City.....5:27 a.m.
			St. Joe.....5:29 a.m.
55—Pass.....		}	Kan. City.....6:00 a.m.
			St. Joe.....6:00 a.m.

## EASTBOUND.

	Lv. Union Depot		Lv. City Depot
4—Pass .....	9:32 a.m.		9:35 a.m.
*6—Pass.....	7:05 p.m.		7:07 p.m.
14—Pass.....	10:45 a.m.		
!56—Pass.....	8:18 p.m.		
16—Pass.....	10:40 p.m.		10:42 p.m.
*94—Freight.....	9:50 a.m.		10:00 a.m.

\*Daily except Sunday.

!Does not stop at City Depot.

**Rock Island System.**

## WESTBOUND.

	Lv. City Depot.		Lv. Union Depot.
!69—Pass .....			2:50 p.m.
!57—Pass .....			6:40 a.m.
11—Pass .....	7:01 a.m.		7:10 a.m.
!3—Pass .....			8:50 a.m.
*29—Pass .....	4:30 p.m.		4:35 p.m.
*1—Pass .....	9:31 p.m.		9:35 p.m.
803—Freight to Leavenworth .....			1:30 p.m.
!507—Pass to 11wth .....	6:50 a.m.		7:10 a.m.

## EASTBOUND.

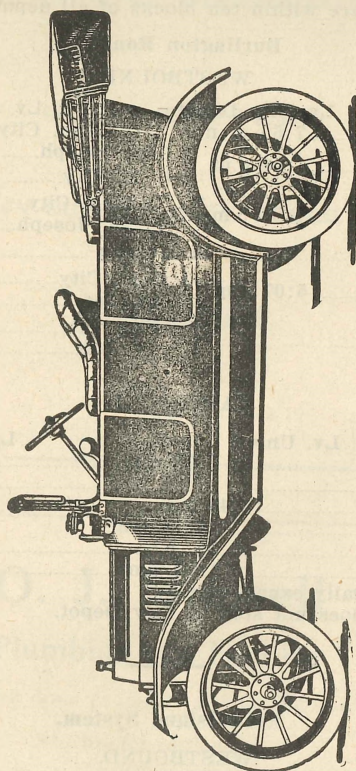
	Lv. Union Depot		Lv. City Depot
70—Pass .....	3:43 p.m.		
2—Pass .....	12:45 a.m.		
30—Pass .....	10:15 a.m.		10:18 a.m.
12—Pass .....	7:39 p.m.		7:42 p.m.
58—Pass .....	1:00 a.m.		
!4—Pass .....	9:13 p.m.		
!506—Pass .....	Arr. 8:45 p.m.		
*802—Freight from Leavenworth, Arr. 12:15 p.m.			

\*Daily except Sunday.

!Does not stop at City Depot.



Distributors for  
**ALLEN AND FORD**  
 AUTOMOBILES



Expert Repairing  
 Starting, Lighting and Ignition systems  
 and storage battery repairing  
 a specialty.

**NEFF'S GARAGE**

Fire Proof.

"Nary a Splinter"

CAMERON

MISSOURI

**All Tents Guaranteed Not to Leak.**

The only way to really and truly get the full benefit of the Chautauqua Assembly is to rent a tent and camp on the grounds. It is the thing to do whether you live in Cameron or elsewhere. We have an elegant camping site for more than 100 tents in shady places and our tents, secured from Baker-Lockwood, are guaranteed to be waterproof, so you will be comfortable, rain or shine. You will have free access to the telephones at headquarters and can order groceries and supplies and have them delivered free at your tent. In other words, you will have all the conveniences of the home and all the pleasures of camp life combined. Write or phone your orders for a tent, cots, chairs, blankets, pillows, etc., at once, and secure a good location. All lodges and churches will have large headquarter tents around the big tent where all will be welcome to loaf, rest and visit and enjoy the intermission between programs. Come and join our Big Chautauqua family.

**Instructions for Conveyances and Automobiles.**

Automobiles will use Cherry and Pine Streets in going and coming from the grounds and refrain from using Chestnut Street. All conveyances except automobiles and motorcycles, and all hacks and carriages are requested to use Chestnut Street and Seminary Avenue in coming and going from the grounds and refrain from using Pine and Cherry Streets.

These regulations are made to prevent accidents and congestion and delay, and we feel sure they will be cheerfully obeyed.

**Season Ticket Conditions.**

Season tickets are non-transferable and are good for admittance only when presented by the person to whom issued. If presented at the gates by any other person, such tickets will be taken up and forfeited and no other tickets issued in lieu thereof. Read the regulations carefully and do not take up time arguing with the gate keepers. **They don't make the Rules.**

**Show Your Tickets.**

Gate keepers have positive orders from the management to inspect **every season ticket every time it is presented for admission.** This ruling is not made on your account, but experience of past years has shown it to be necessary for the protection of the Association. Surely no reasonable person will object.

**Sanitary Toilets.**

The management of the Chautauqua Association is continually striving to improve the grounds and add anything which will contribute to the comfort of the public. Their latest acquisition to that end is the installation of city water and sanitary toilets. This addition to the grounds will no doubt be appreciated by the Chautauqua patrons.



When a fellow thinks

he needs something new to wear

“WE ARE FOR HIM”

— not after him.

**Hulse Cash Clothing Company**

Cameron, - - - Missouri

**THOS. E. DEEM**

AUCTIONEER

Cameron, Mo.

While attending the Chautauqua eat at

**TAYLOR'S CAFE**

Large Cool Dining Room. Hot Lunches at all Hours.  
Regular Meals.

E. Third St., North Side, Cameron, Mo.

#### The Cameron Chautauqua Grounds.

The sessions of the Assembly will be held in Chautauqua Park. This beautiful park of seven acres is situated within the city limits, just south and west of the Missouri Wesleyan College, and together with the college campus and other adjoining lots, makes an ideal Chautauqua ground. Over 200 large trees furnish ample shade and free seats will be provided in central places. A beautiful new tent of mammoth size, seating over 3,000 people with nice, easy, comfortable seats will be erected near the center of the park.

Telephone connection at Headquarter Office free to any part of the city or county. Also connection with the various mutual lines.

Board and lodging may be procured on the grounds or at the hotels in the city and the homes of our citizens. A dining hall and refreshment stand will be maintained on the grounds. First-class meals will be served at reasonable rates.

The management is very glad to announce that we have built a nice, permanent dining hall with all windows and doors screened. So you can secure a first-class meal or lunch on the ground. The ladies of the Presbyterian Church have leased the above for the 1915 Assembly, which will insure first-class service and good eating at popular prices. Be sure and see them while here.

Electricity—The entire grounds as well as the large tent will be lighted with electric lights.

Special Police will carefully guard the grounds both day and night. You will be as safe as in your own home.

A Bureau of Information will be located at headquarter Office on the grounds. Go there to make inquiries and you will receive prompt and courteous treatment. The grounds will be patrolled at 8 o'clock each morning and each person will be required to present his ticket god for the day.

A check room will be provided where small packages such as valises, umbrellas, lunch baskets, etc., may be checked for five cents.

Groceries and all other supplies may be ordered by telephone and will be delivered free on the grounds.

No moving in or out on Sunday of campers' outfits will be expected of tenters. Free hitching privileges will be provided in and near the grounds.

Mail—We receive 13 mails daily and mail addressed in care of the Cameron Chautauqua Assembly will be delivered twice each day at the office.

For further information concerning tents, accommodations, programs, tickets, etc., address,

C. S. KEMPER, Secretary.



## ICE CREAM



If made by the Cameron Dairy Company can be taken with perfect safety.

Remember these people refuse to buy milk at their Cameron plant unless producer can furnish a certificate to show their cows are healthy and are TUBERCULIN TESTED REGULARLY.

They also pasteurize all milk products before freezing and guarantee their "Cream of Quality" to comply with the state pure food laws.

*Cameron Dairy Company*

It will pay you to drive to the

## Rutledge Produce House

with your Poultry, Eggs, Hides, Furs, Wool and Junk, where you will get the highest market price at all times. Give us a trial.

Cholera for fowls sold and a positive guarantee as a cure for Cholera, Roup, Gaps and Limberneck; price 50 cents per bottle.

**C. E. RUTLEDGE, Mgr.**

City phone 43

Mutual 41

### The Annual Meeting of the Cameron Chautauqua Association

for 1915 for the purpose of electing officers, hearing reports from the officers for the past year, and all other business coming before the Association, will be held at the Y. M. C. A. Rooms on Saturday, August 21 at 2:00 p. m. Every member of the Association is urged to attend this meeting and take an active part in furthering the interests of the Association.

### Compare Our Program With Other Chautauquas

and see how much more we give than they do, for the same money. Count the Lectures, Concerts, Entertainments, Readings, Sermons, Preludes and Character Sketches. All for \$2.00. Buy a Season Ticket before July 24th and be ready to enjoy all the many good things. It is a program full of variety and will be sure to please. You will always regret it if you don't attend "The Great Cameron Chautauqua" in 1915.

### Attractions As Announced.

It is the intention to carry out this program exactly as announced. Deviation will be made only in case of accident or death. Contracts for all the talent have been made before the printing is done. Every attraction here announced is under agreement to appear at the specified time. Some additions may be made, but none here printed will be cancelled. The day and hour of each speaker will be fixed and there will be no change.

### Automobile Entrance.

An automobile entrance will be provided at the northwest corner of the grounds and the machines must be kept within the prescribed limits, which is close to the big tent.

### Some Little Reminders

All hats off in the big tent.  
Don't forget to bring your rubbers.  
Bring your notebook and get some points to keep.  
A sofa pillow always comes in handy.  
Secure a tent and enjoy yourself for nine days.  
The bus service from the depots will be first-class.  
Save this program and bring it with you to the Chautauqua.



Established 1872

## W. G. Sloan & Sons

Proprietors of

### *Cameron Marble and Granite Works*

CAMERON                      MISSOURI

*Our Specialty:*

*FINE GRANITE WORK*

**ASK FOR PRICES**

## MIDLAND HOTEL

Plenty to eat and good clean beds

Satisfaction Guaranteed

**W. H. COOK, Prop.**

## MALLORY BROS.

S Walnut Street

**Fine Livery Rigs, Feed, Hack  
and Baggage**

City Phone 59      Mutual 138



*Dr. W. D. Agnew*  
Platform Manager

The management announces with pleasure their selection for Platform Manager, Dr. Walter D. Agnew, the President of Hedding College, Abingdon, Ills.

Dr. Agnew needs no introduction to our people, having made many friends during his residence in Cameron who will be delighted to meet him again.

He comes well equipped to fill the position of platform manager, his education having been along broad lines. A native of Illinois, a graduate of Illinois Wesleyan University and the Boston University School of Theology; seven years connected with Missouri Wesleyan College, its President nearly four years; for two years Dean of the School of Theology in the University of Chattanooga, Tenn.; and four years President of Hedding College, the position he now occupies.

Dr. Agnew is a man of broad culture and wide experience. His morning lectures will be instructive and entertaining and we bespeak for him a large and appreciative hearing.



## Thompson Grocer Company

If you want the Best, buy

PURE FOOD GOODS

They	They	They
Look	Taste	Are
Good	Good	Good

*A TRIAL WILL CONVINCCE YOU*

## *Greens Millinery Store*

For

Low Prices and Reliable Styles  
Demonstration of Gossard  
Corsets

**ELTON T. HARRIS**

Lawyer

Will practice in all the Courts  
Cameron, Mo.



## *Prof. C. L. Rutherford*

It is with pleasure the management announces that we are to have Prof. C. L. Rutherford's Chautauqua Band with us again this year. They gave such universal satisfaction last season. This band was especially organized for Chautauqua work, and has a repertoire of music that particularly appeals to the varied and composite taste of a Chautauqua audience. For years Prof. Rutherford has been recognized as one of the leading band directors in America. With the assistance of the most carefully selected musicians in the state, each of whom is a soloist upon the instrument he plays. Prof. Rutherford will present an attraction throughout the season that is certain to merit enthusiastic approval. The programs of this band will be in the morning, afternoon and evening of the entire Chautauqua.



**FRANK B. KLEPPER**  
ATTORNEY-AT-LAW

Office in Farmers Bank  
City Phone 38                      Mutual 82

CAMERON    - -    MISSOURI

**O. W. WRIGHT**  
Cash Grocer

**FIGURE WITH ME**

before you buy city or farm real estate; I have a large list of both, with prices to suit all. I have some splendid bargains in cheap lands for the man with little money—prices from \$5 per acre up, with easy terms.

I HAVE MONEY to loan on farm lands at the lowest rate of interest.

**John L. Trice, Cameron, Mo.**

**JOHN T. FRAZIER**  
JOB TIN SHOP  
PUMPS and HOT AIR FURNACES

Cameron,                      Missouri

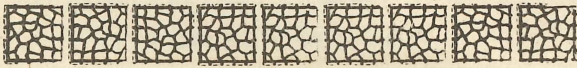


*Mrs. M. S. Boal*

Mrs. M. S. Boal of Chicago, has a new method of presenting Domestic Science attractively to Chautauqua audiences. Instead of doing the work herself she brings with her a negro chef, who is himself an expert in this useful art. While the chef does the work Mrs. Boal lectures effectively and thus demonstrates very clearly just what her audiences wish to know. Her work is based on the fundamental principles of good cookery and her lectures will be of very great value to all our people.

A lecture each morning at the big tent, beginning Monday, August 2nd at 9 a. m. Don't miss these lectures as you will get many useful suggestions therefrom.





If you wish

## PHOTOS



that are strictly

**Up-to-Date**

and of the

**Finest Quality**

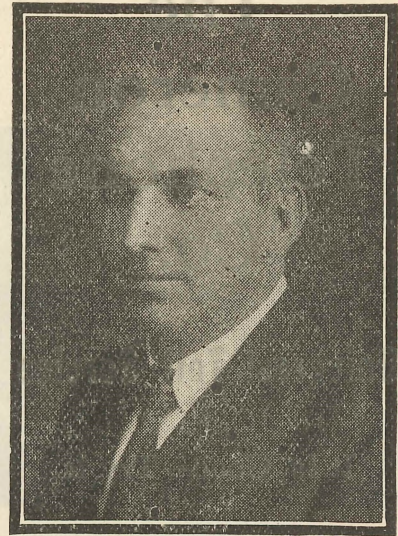
*Remember*

you can get them at the studio of

**A. S. BROWN**

Cameron -- Missouri

Kodak finishing properly done.



*Henry A. Adrain*  
Saturday, July 31

All have heard of Luther Burbank, "The Plant Wizard." Thousands all over the country have desired to see Mr. Burbank and the wonderful work he has accomplished.

Mr. Henry A. Adrain, a co-laborer with Burbank, describes the work more brilliantly perhaps than Mr. Burbank himself could do. His lecture is a demonstrated one and made more intensely interesting by the use of many rare specimens of new creations of plant life direct from the Burbank gardens.

Luther Burbank has proven himself one of the world's greatest benefactors, as he has by rare skill produced useful plants from noxious ones and is thus solving one great problem—that of improving the quality and increasing the quantity of wholesome food.

Don't fail to hear Adrain in this great lecture, "With Burbank In Wonderland."



# The Cameron Telephone Co.

**Universal Toll Service**

It Is Good—Try It

For

**FIRE INSURANCE**

See

**JOHN C. CARR**

Office over Hook's Drug Store

## MEATS

A complete line of the best of fresh and smoked meats

**OLEOMARGARINE**

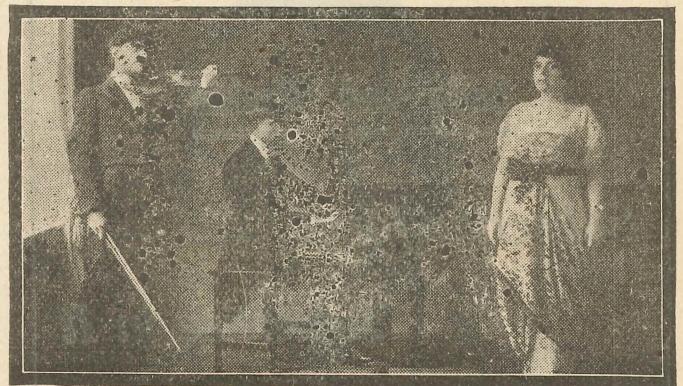
Fresh Oysters in Season

**C. H. HAMMOND, Prop.**

City 185

Both Phones

Mutual 120



## *The Riheldaffer-Skibinsky Company*

Saturday, July 31

In presenting these three great artists to appear together on our platform the management feel that they have accomplished a notable achievement. Each alone has been considered a brilliant attraction. The combination of their talents has produced what is unquestionably one of the finest musical organizations in America.

Madame Grace Hall-Riheldaffer is recognized by both press and public as one of the greatest American Sopranos.

Alexander Von Skibinsky, the noted Russian violinist, has worked with the great masters of Germany and Russia. He was engaged in Germany as soloist, concertmeister and instructor, meeting with great success everywhere.

Harold A. Loring is well known throughout musical America as an instructor of ability and has won distinction as a brilliant concert pianist.



*The*  
**Cameron Observer**

**Daily and Weekly**

*Subscribe for It*

*Advertise in It*

**Parry & Gorrell**

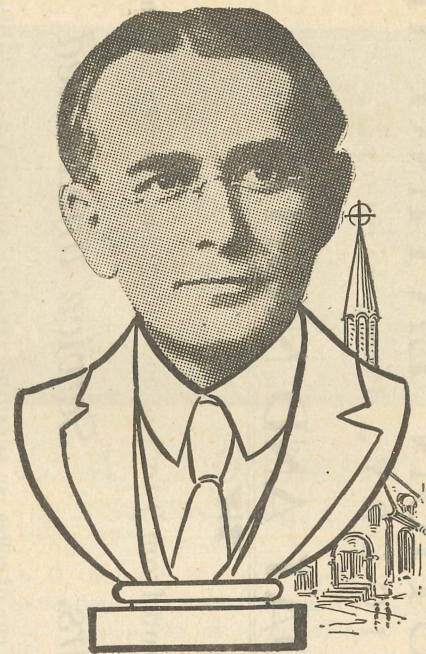
==

**Clothing and  
 Furnishing Goods**

==

CAMERON

MISSOURI



*Rev. P. Marion Simms*

Sunday, Aug. 1

The Rev. P. Marion Simms is a scholar, minister, author, lecturer and man of affairs. He is now serving his seventh year as pastor of one of the strongest Presbyterian churches in Iowa.

As an author he has won an enviable position. "What Must the Church Do to Be Saved?", being one his books.

As a lecturer he is among the best. He is an orator, philosopher, humorist and sentimentalist, never failing to keep his audience in the best of humor.



# CAMERON JUNCTION EATING HOUSE

W. E. QUIGLEY, Proprietor

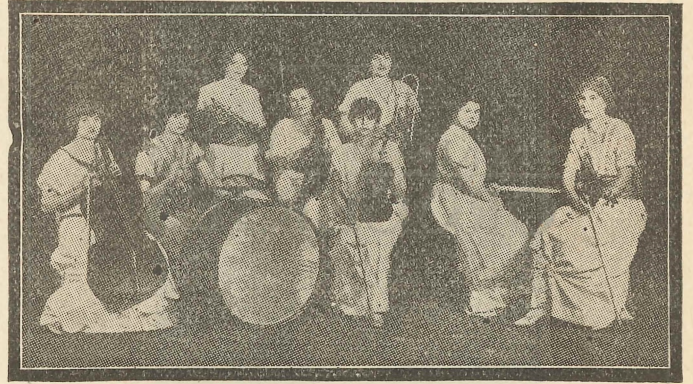
## OPEN DAY AND NIGHT



Short orders served from 5 to 10 a. m. and from 9 to 5 p. m. Regular dinner 12 m. to 2 p. m.

*Lunch at all hours. Service unexcelled*

The place where you are sure to get a good cup of coffee, an appetizing sandwich and the best pie in Missouri.



### L. A. C. Orchestra Sunday, Aug. 1

The L. A. C. Orchestra is without doubt one of the most popular organizations of its kind appearing on the chautauqua platform. Composed of eight talented and comely maidens each and every one an artist on the instrument which she plays, besides vocal solos and quartets.

The Lima (Ohio) Republican-Gazette says of them: "Their appearance won the audience before the program had begun. The orchestra was originally organized for the pleasure of the young women of whom it is composed. After months of study under Leon Marx, of the Theodore Thomas Orchestra, they resolved to accept engagements. Individually, they are finished musicians. Their entertainment was composed of orchestra selections, vocal quartets, duets and solos and readings."



# Williams Gro. Co.

Successors to

MRS. J. D. STEVENS

Staple and Fancy  
**GROCERIES**

A Store of Quality

Phones: - City 520; Mutual 25

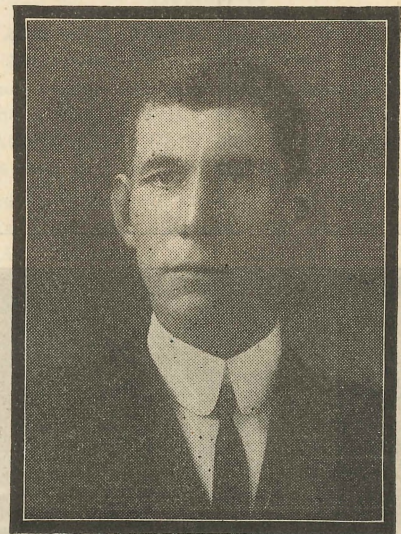
# S. H. Hook & Co.

Drugs

BOOKS, WALL PAPER  
PHOTOGRAPHIC SUPPLIES  
WINDOW SHADES, OILS  
AND PAINTS

Where Quality Counts

The Corner Drug Store



*James A. Burns*

"Burns of the Mountains." The American Magazine says of him: "The breed of Lincoln is not gone."

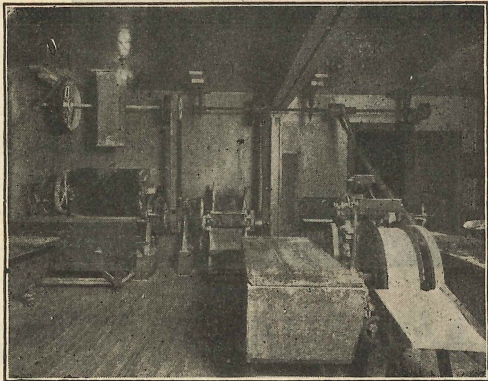
He is the mountaineer who founded the college to save his own people from degeneracy and feuds.

Reared in the mountains of Eastern Kentucky, away from school advantages, he, of the Lincoln type, has risen to fame. Built a college at Oneida and is president of same.

Be sure and hear this great self-made man who with only seventeen months of schooling is one of the foremost orators and educators in America.



## Neff's Bread



WRAPPED IN WAX PAPER  
NAME ON EVERY LOAF

### DETAILED DAILY PROGRAM OF THE GREAT

# CAMERON CHAUTAUQUA

JULY 31 to AUGUST 8.  
(Inclusive)

Daily Admission, Adults: All day, 35c; Evening, 25c.

Daily Admission, Children: All day, 20c; Evening, 15c

Regular season tickets not transferable, but permit coming and going at will. If purchased and paid for by July 24: Adults, \$2.00; Children 8 to 15 years, \$1.00. After July 24 they will be \$2.25 and \$1.25 respectively.

Commutation Season Tickets, with nine coupons, each coupon good for one admission for anyone at any time; adults, \$2.50; children 8 to 15 years, \$1.50. These tickets permit coming and going at will. Not on sale after first day of Assembly. Admission for children under eight years, free.

The Official Program is herewith presented. All numbers are under positive contract and will certainly appear as herein announced unless prevented by sickness or accident, in which event we are prepared to fill such vacancies on short notice with first-class talent.

The Management requests all ladies to remove their hats during all exercises.

#### Department of Public Comfort.

Camp Tent for season, 12x14, 1 room, 3½-foot wall,.... \$3.00

Camp Tent for season, 2-room, 6-foot wall..... \$5.00

Camp Tent for season, 12x19, 3-room, 6-foot wall,..... \$7.00

Camp Tent for season, 5-room, 6-foot wall..... \$9.00

Floors will be laid in the 2-room tents for \$1.50, and in the 5-room tents for \$2.50, if ordered when tent is ordered. A 3-room floor will be laid for \$1.75.

**No floors will be laid after tent is erected.**

Cots, chairs, stools, blankets, sheets, pillows, etc., can be rented at reasonable rates by the night or season.

Tent holders will be required to show season or admission tickets and report visitors each night and morning to an official of the Association.

Orders for tents, floors and equipments must be reserved not later than July 20th.

C. S. KEMPER, Chairman.

## See the Pixlees

for new or used automobiles or livery.



**W. D. AGNEW, Platform Manager.**

In the six addresses which I am to give on the Bible I have decided to use the following:

1. The Bible as a Library.
2. Biblical Uses of History.
3. Biblical Drama,—the Book of Job.
4. The Epic Poetry of the Bible.
5. The Hebrew Prophet and His Message.
6. The Greatest Biography or the "Keystone and the Arch."

For my theme on Sunday, June 8th, you may simply announce me for a sermon. I would rather be governed by what seems to be an appropriate theme when the time comes rather than to choose it now.

**SATURDAY, JULY 31st.**

- 2:00 p. m.—Concert Rutherford Chautauqua Band.  
 2:30 p. m.—Prelude, Riheldaffer Skibinsky Co.  
 3:00 p. m.—Lecture, Henry A. Adrain—"With Burbank in wonderland."  
 7:00 p. m.—Concert, Rutherford Chautauqua Band.  
 8:00 p. m.—Full Program, Riheldaffer Skibinsky Co.

**SUNDAY, AUGUST 1st.**

- 10:00 a. m.—Grand Concert and Chorus, Rutherford Chautauqua Band and L. A. C. Orchestra.  
 11:00 a. m.—Sermon, Rev. P. Marian Simms.  
 2:00 p. m.—Sacred Concert, Rutherford Chautauqua Band.  
 2:30 p. m.—Prelude, L. A. C. Orchestra.  
 3:00 p. m.—Lecture, Rev. P. Marion Simms, "The Calf Path."  
 7:00 p. m.—Concert, Rutherford Chautauqua Band.  
 8:00 p. m.—Full Program, L. A. C. Orchestra.

**MONDAY, AUGUST 2nd.**

- 9:00 a. m.—Domestic Science Lecture and Demonstration by Mrs. Boal.  
 10:30 a. m.—Concert, Rutherford Chautauqua Band.  
 11:00 a. m.—First Bible Lecture, Dr. W. D. Agnew.  
 2:00 p. m.—Concert, Rutherford Chautauqua Band.  
 2:30 p. m.—Prelude, Miss Mae Parker.  
 3:00 p. m.—Lecture, Pres. Jas. A. Burnes.  
 7:00 p. m.—Concert, Rutherford Chautauqua Band.  
 8:00 p. m.—Reading, Miss Mae Parker.

**TUESDAY, AUGUST 3rd.**

- 9 a. m.—Domestic Science Lecture and Demonstration by Mrs. Boal.  
 10:30 a. m.—Concert, Rutherford Chautauqua Band.  
 11:00 a. m.—Bible Lecture, Dr. W. D. Agnew.  
 2:00 p. m.—Concert, Rutherford Chautauqua Band.  
 2:30 p. m.—Prelude, The Pierces.  
 3:00 p. m.—Lecture, W. I. Nolan. "Father Adam and Brother Bill."  
 7:00 p. m.—Concert, Rutherford Chautauqua Band.  
 8:00 p. m.—Full Program, The Pierces.

**WEDNESDAY, AUGUST 4th.**

- 9:00 a. m.—Domestic Science Lecture and Demonstration by Mrs. Boal.  
 10:30 a. m.—Concert, Rutherford Chautauqua Band.  
 11:00 a. m.—Bible Lecture, Dr. W. D. Agnew.  
 2:00 p. m.—Concert, Rutherford Chautauqua Band.  
 2:30 p. m.—Prelude, Walter Eccles and the College Girls.  
 3:00 p. m.—Lecture, Chancellor Geo. H. Bradford, "Sun-crowned Manhood."  
 7:00 p. m.—Concert, Rutherford Chautauqua Band.  
 8:00 p. m.—Full Program, Walter Eccles and the College Girls.

**THURSDAY, AUGUST 5th.**

- 9 a. m.—Domestic Science Lecture and Demonstration by Mrs. Boal.  
 10:30 a. m.—Concert, Rutherford Chautauqua Band.  
 11:00 a. m.—Bible Lecture, Dr. W. D. Agnew.

**AIR DOME**

**"ALL THAT'S WORTH WHILE IN MOVING PICTURES"**

POPULAR PRICES—FIVE AND TEN CENTS

—:—

GORDEN BROWN, Mgr.



- 2:00 p. m.—Concert, Rutherford Chautauqua Band.  
 2:30 p. m.—Prelude, Caps Orchestra.  
 3:00 p. m.—Lecture, Hon. James A. Reed.  
 7:00 p. m.—Concert, Rutherford Chautauqua Band.  
 8:00 p. m.—Full Program, Caps Orchestra.

#### FRIDAY, AUGUST 6th.

- 9 a. m.—Domestic Science Lecture and Demonstration by Mrs. Boal.  
 10:30 a. m.—Concert, Rutherford Chautauqua Band.  
 11:00 a. m.—Bible Lecture, Dr. W. D. Agnew.  
 2:00 p. m.—Concert, Rutherford Chautauqua Band.  
 2:30 p. m.—Prelude, The Hampton Court Singers.  
 3:00 p. m.—Lecture, Wm. Murray, "The Philosophy of the Plow."  
 7:00 p. m.—Concert, Rutherford Chautauqua Band.  
 8:00 p. m.—Full Program, The Hampton Court Singers.

#### SATURDAY, AUGUST 7th.

- 9 a. m.—Domestic Science Lecture and Demonstration by Mrs. Boal.  
 10:30 a. m.—Concert, Rutherford Chautauqua Band.  
 11:00 a. m.—Bible Lecture, Dr. W. D. Agnew.  
 2:00 p. m.—Concert, Rutherford Chautauqua Band.  
 3:00 p. m.—Frank H. Farris, Lecture, "I Don't Know Where I am Going but I Am on My Way."  
 7:00 p. m.—Concert, Rutherford Chautauqua Band.  
 8:00 p. m.—Entertainment, Chas. R. Taggart.

#### SUNDAY, AUGUST 8th.

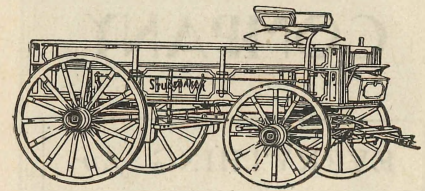
- 10:30 a. m.—Concert, Rutherford Chautauqua Band.  
 11:00 a. m.—Sermon, Dr. W. D. Agnew.  
 2:00 p. m.—Concert, Rutherford Chautauqua Band.  
 2:30 p. m.—Prelude, Old Folks Choir.  
 3:00 p. m.—Lecture, Dr. James Whitcomb Brouger, "What's Under Your Hat."  
 7:00 p. m.—Concert, Rutherford Chautauqua Band.  
 8:00 p. m.—Full Program, Ye Old Folks Choir.

**See The Leader**

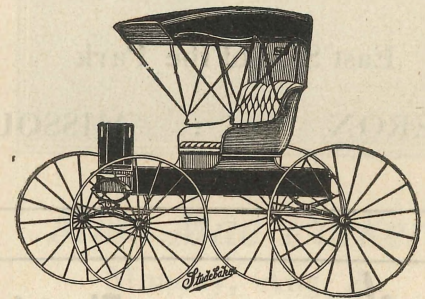
Dry Goods, Carpets, Rugs and Shoes

## Farmers Equipment Store

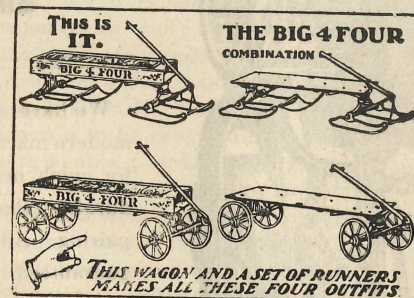
For Work



For Pleasure



For Work and Pleasure



Everything on Wheels from a Lawn

Mower to a Threshing Machine

Largest Stock in Four Counties  
for Your Convenience

**Shirts, Ammon & Co.**

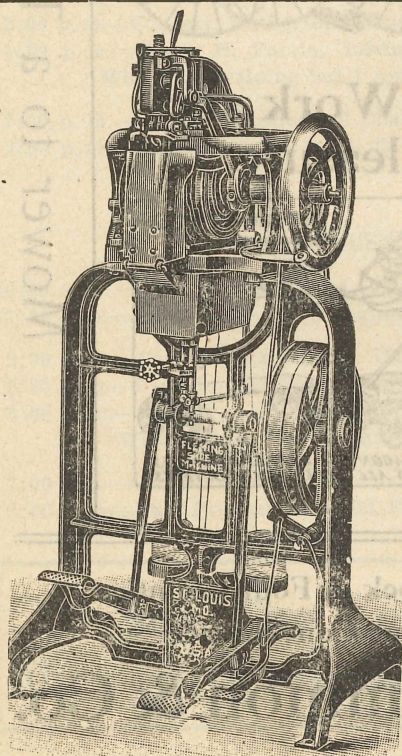


*The*  
**CAMERON AUTO  
 COMPANY**

EVERYTHING *for*  
*the* MOTOR CAR

East Side of the Park

CAMERON : : MISSOURI



**Electric  
 Shoe  
 Shop**

We have all the modern machinery for quick, neat and durable shoe repairing. All work guaranteed satisfactory.

**G. S.  
 McDaniel,  
 Prop.**  
 Cameron, Mo.



*Miss Mae Parker*  
 Monday, Aug. 2

One of the delightful features of the 1915 Chautauqua will be the appearance of Miss Mae Parker, the well known Missouri Reader. She has attracted wide attention by her work in the Chautauqua and Lyceum world. The Reader possesses a voice of remarkable strength and richness and with a capacity for study and work have added a charming personality and have made it possible for her to supply in the fullest measure the Chautauqua audiences demands. For this season Miss Parker presents "Molly Make Believe."

Cameron is to be congratulated upon being so fortunate as to secure so able a reader during our Chautauqua. Miss Parker is so well known that any additional eulogy from us or extensive comment from others is unnecessary.

"Too much cannot be said in praise of Miss Parker's work in both reading and music. She has a well modulated voice, well trained, and always under control. Its tone qualities are pure and rich in its many shades of inflections."—Hopkins (Mo.) Journal.

"Miss Parker is a delightfully pleasing reader, and contralto soloist, and was heartily applauded by her audience. She was pronounced by many of her hearers as being one of the best readers ever heard in Gallatin."—Gallatin (Mo.) Democrat.



**C. A. LEIBRANDT**  
*THE JEWELER*

While at the Chautauqua, call and see our large line of Jewelry, the largest and best stock to select from Also see our line of Pianos and Sewing Machines. It will pay you.

☞ While there have your watch examined and put in order.

CAMERON                      MISSOURI

**The *Rexall* Store**

==  
**N. E. OWEN & CO.**  
DRUGGISTS

==  
Books, Stationery, Wall Paper, Paints  
Window Shades, Kodaks  
Kodak Supplies

Soda Water: Pure and Cold

Lowney's Chocolates



*Hon. W. I. Nolan*  
Tuesday, Aug. 3

You have never heard a popular lecture we feel safe in saying, that pleased you more than will "Father Arbaham and Brother Bill," which Hon. W. I. Nolan will deliver Tuesday, August 3. This lecture seems to embody all the praiseworthy teaching and humorous philosophy which men and women have gathered from the time of Eve's husband to "Bill" the average man of today. It is a humorous retrospective estimate and analysis of human experience. Nolan the true blue American of Irish ancestry is especially happy in a lecture of this kind into which his native wit and homely philosophy are so cleverly interwoven. He is really a phenomenal success as an impersonator and story teller, and in fact devoted some years to platform work of that kind, gradually merging it into his inimitable lectures. No more clever interperter of Scandinavian dialect humor, however, has been heard on the platform.



## E. STEINER

*Dry Goods, Cloaks, Suits  
and Millinery*

CAMERON                  MISSOURI

## The Cameron Sun

The Weekly Paper that Gives the  
Local News

==  
*\$1.00 the year*  
==

Sale Bills and all kinds of Job Printing  
at Right Prices



## *The Pierces* Tuesday, Aug. 3

The Pierces Dramatic Artists. That should be enough said to fill the tent to overflowing, as the Pierces have been on the Chautauqua platform over twelve years, delighting audiences wherever they have gone.

They successfully blend humor and pathos with an undercurrent of the moral uplift needed in the tragedies and comedies of daily life. So that each audience goes home with the satisfaction of having received something more than mere entertainment.



## Shoes for Everybody

Interwoven Hose for Men

*Always Quality First*

—at—

**Brown & McClean's**  
The Shoemen

**FRANK L. PULLEY**

**ABTRACTER**

TITLES PERFECTED

First National Bank Bldg.      Cameron, Mo.

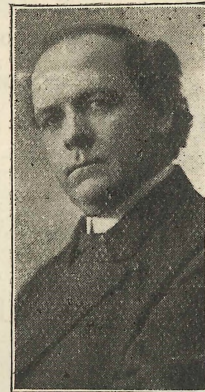
Go to the

**McDANIEL DAIRY**

for Fresh Butter, Buttermilk, Milk and Cream

Phone 129

**W. G. McDANIELS**



## *Chancellor Geo. H. Bradford*

Wednesday, Aug. 4

For years Chancellor Bradford has been prominent as a pulpit orator and in constant demand at great gatherings of educators and churchmen. His personality is dignified, but charming and his lectures are masterpieces of oratorical worth and convincing argument. He has taken advanced ground regarding the demands of the times for industrial education and in fact produces startling facts to show the imperative demand of the times for radical changes. His latest address analyzes world wide conditions incident to and resultant from the great war, and is pronounced one of the ablest and timeliest utterances of the past year.



## S. J. SLOAN



Always has the latest in Jewelry.  
Wrist Watches, Wedgewood Cameos,  
Friendship Bracelets, Silverware,  
Sheaffer Self-filling Nonleakable Fountain Pens  
Libby Cut Glass and China

104 E Third Street

CAMERON MISSOURI

## Callahan's Drug Store

City Phone 89 Mutual Phone 52

We carry at all times a complete line of Drugs, Drug-  
gists Sundries, Stationery, Books, Toilet Articles

### "SAFETY FIRST"

Most careful attention given to prescriptions. We use  
only purest and best drugs obtainable, and fill prescrip-  
tions just as written. We do not substitute.

### "COOLEST PLACE IN TOWN"

Visit our Soda Fountain.

"Looks Clean,  
Is Clean  
Stays Clean"

We strive to give you the best in quality and service.

M. H. CALLAHAN, Prop.



## College Girls

Wednesday, Aug. 4

The program committee availed itself of the first oppor-  
tunity for securing Walter Eccles and the College Girls. This  
company is the pioneer of its class and for nine years Mr.  
Eccles and his quartet of young ladies and their musical di-  
rector, making a party of six, has been making transconti-  
nental tours, and everywhere given a most unusual welcome.  
Mr. Eccles as a humorist, impersonator and musical, enter-  
tainer is alone fully equal to the task of entertaining great  
audiences, but with the assistance of five others, a musical  
entertainment most varied, novel and clever is produced.  
They introduce many original compositions written especially  
for them, and also many operatic scenes and selections, ap-  
pearing in a variety of charming costumes. Through the en-  
tire entertainment there runs a spirit of clean merriment,  
well mixed with music of genuine worth. A treat is in store  
when this company appears.



Furniture Rugs Linoleums

# UNDERTAKING

Exclusive agency on the following lines

Globe Wernicke Sectional Book Cases

Sealy Mattresses

Leggett & Platt Bed Springs

Hoosier Kitchen Cabinets

## J. W. Poland

Y. M. C. A. Building

Cameron -- Missouri

# WARD & BURGESS



LUMBER, CEMENT, PAINTS

OILS and GLASS

Courteous Treatment

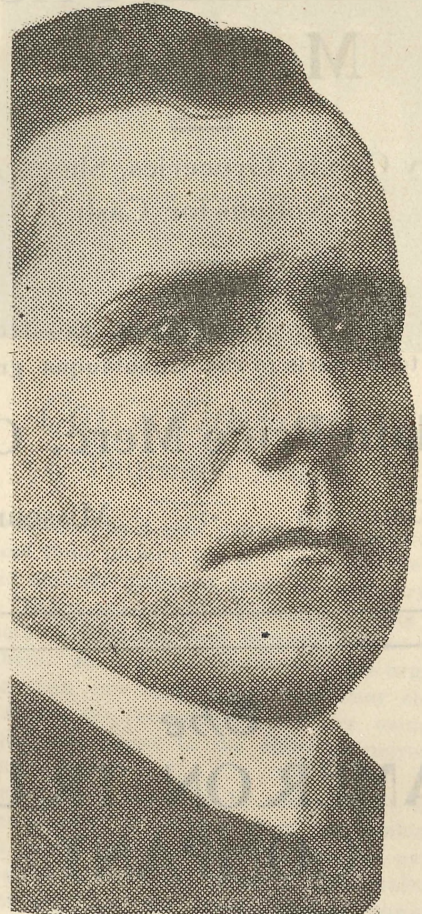


City phone 195

Mutual 104

CAMERON

MISSOURI



## Hon. James A. Reed

Thursday, Aug. 5

Senator James A. Reed, Junior Senator from our own Imperial Commonwealth, will address our people on Thursday, August 5th, on some great national issues, but not from a partisan standpoint. Senator Reed stands today one of the foremost statesmen of our country and as an orator is unsurpassed. If you want an instructive and entertaining hour come out and hear Senator Reed.



## The Plain Price Merc. Co.

==  
Dry Goods, Groceries, Shoes and  
Notions for Cash  
==

Order your groceries from us—deliveries  
made to all parts of the Chautauqua grounds.

### Plain Price Merc. Co.

Cameron    :-    Missouri

## The CAMERON TRUST COMPANY

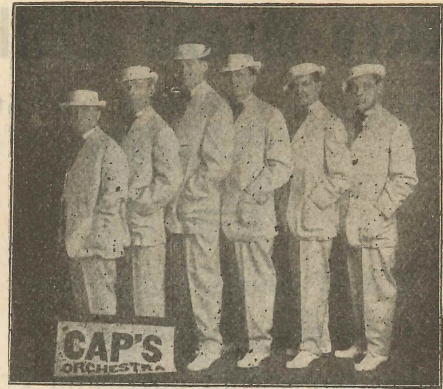
Capital \$100,000  
Surplus and Profits \$60,000

Does a general banking business

Pays 4 per cent on time deposits and 2 per cent on  
checking accounts.

**We solicit your business**

A. J. ALTHOUSE, PRES.    I. D. COTTEY, TREAS.  
H. F. MCGILL, ASST. TREAS.



### Cap's Orchestra Thursday, Aug. 5

Caps Orchestra is a new departure in musical entertainment, and their playing has a snap and style which is original and entirely different from the ordinary musical attraction. There are no dull moments during the program—something different each number and no waits between numbers. Each of the members of the organization plays more than one instrument, and they change instruments during the rendition of numbers, using the instrumentation best suited to the different movements of the selection.

Every number is improved by some bright, new idea, either in the manner of playing or in the combination of instruments used. The audience is kept in expectancy as to the nature of the next "stunt." The quality of the music is not sacrificed for these "stunts" however, and favorite classical numbers such as "Il Trovatore," "Tannhauser," "Faust," "Bohemian Girl," "Tales of Hoffman," and others, take on a new and added interest, from the unique solo and ensemble work of these musicians. This organization will be a delightful and refreshing change from the usual orchestra program.

The members of the Orchestra are all clean-cut, refined American gentlemen, as well as able, versatile musicians. They have been playing together continuously for more than seven years. They are full of life and vigor, as only Americans can be, and they show this in the bright, happy, "snappy" manner in which they play, and in the "go" given to the music. This is contagious and they readily have their audience in a like happy frame of mind. This Company has traveled extensively and they have pleased wherever they have appeared.



## Society Brand Clothes

for Young Men and Men who Stay  
Young



E & W Shirts and Collars  
Munsing Underwear  
Traveling Bags, Suit Cases and Trunks



**C. N. Stucker**  
Cash Clothier

## Packard Shoe Company

Agents for the  
**Red Cross Shoe**

Highest Quality, Lowest Priced Shoe  
Store in Northwest Missouri  
Cameron    :-:    Missouri



*Hon. William Murray*  
Friday, Aug. 6

Congressman Murray, whose constituency of Oklahoma in their lovable, free and easy manner, affectionately named "Alfalfa Bill" speaks on Friday, August 6th, his subject being "The Philosophy of the Plow." You must hear him for he's worth while. This lecture includes much of a personal narrative of entrancing interest. Murray arose from one of the humblest of frontier families and became a lawyer of national prominence and one of the chief builders of the State of Oklahoma.

He is the owner of a splendid plantation, with its extensive cotton and alfalfa fields, and his utterances along agricultural lines are authoritative. His purposeful address, however, exalts the homely virtues, discloses the quagmires of politics and in his own peculiar manner exhorts us to higher living. His voice is big and resonant, his ever present humor broad and infectious. When he speaks the gallery of the House of Representatives is filled, and so will be our Chautauqua grounds when "Alfalfa Bill" Murray comes.



You are invited to examine our large show  
room of up-to-date

## Plumbing and Heating Supplies



Practical Workmen

City phone 225, Residence 330

**J. A. Kendall**

Cameron, Mo.

*"Do It Electrically"*

## Fans, Irons, Lamps Vacuum Cleaners



If It Is Electric We Have It  
Everything Guaranteed

City Phones 225, 321, 338

**G. W. Chivens & Son**

Cameron    :-:    Missouri



## *Hampton Court Singers*

Friday, Aug. 6

This unique Company of fine artists fills a new place on the chautauqua platform, presenting a new type of program in that it will contain few if any operatic selections. Unlike any other singing party it stands between the operatic quartet and the standard concert company.

The entertainment will be distinctive and novel, especially costumed and arranged with appropriate action. The use of the old English motion songs introduced by readings will be a new and attractive feature.



## S. L. EVANS

Sells Coal and Feed cheaper than anyone, Quality and Service Considered. Buys Grain and Hay. Agent for Swift Fertilizers. Home of "Excello" Feeds.

City phone 25      Mutual 116

CAMERON

MISSOURI

## DR. O. A. SMITH

DENTIST

OFFICE OVER DESTIEGUER BUILDING

## J. F. YOUNGMAN

Dealer in

Staple and Fancy Groceries



TONES COFFEE

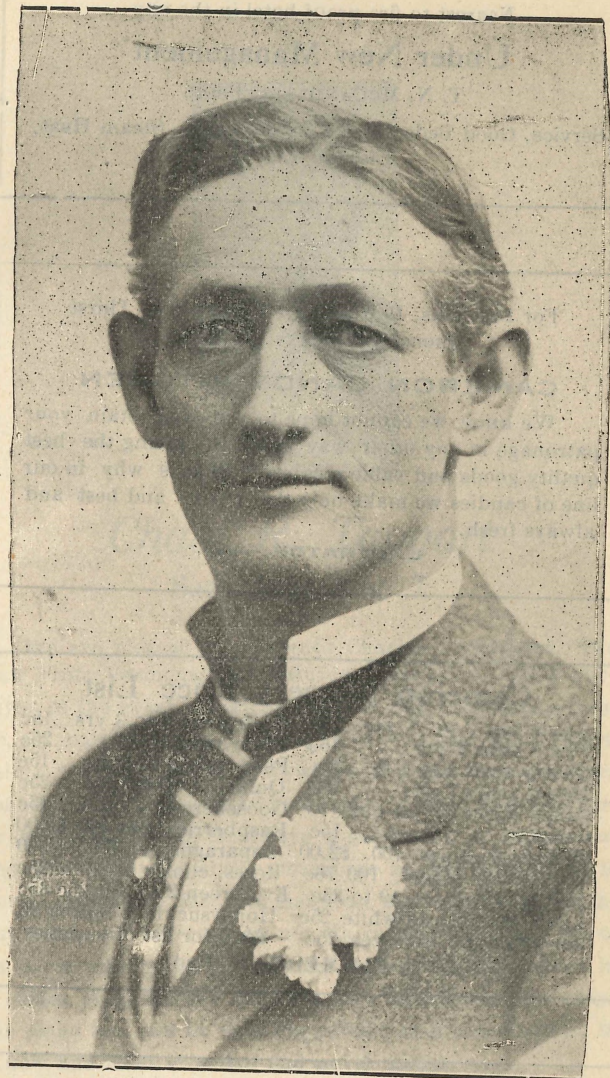
RED TOP FLOUR



Cameron

:-:

Missouri



*Hon. Frank H. Farris*

Saturday, Aug. 7



\$2.00 per day

Sample Rooms

**HOTEL MACK**

Nearest to fire proof hotel in the city

**Under New Management**

T. N. McCANDLASS, PROP.

Service, Good Beds, Well Cooked Meals, Steam Heat,  
Electric LightsFor Delicious, Refreshing, Wholesome, Thirst  
Quenching Drinks, go to the**CAMERON CANDY KITCHEN**We know we cannot hope to win and retain your  
patronage in any other way than by giving the best  
quality goods and value received. That is why in our  
line of candies we make only the purest and best and  
always fresh.

L. STRATOS, PROP.

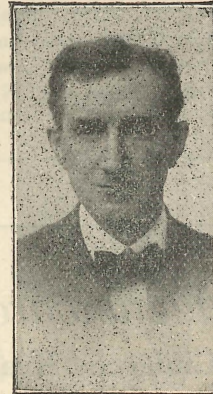
**Cameron Nursery Price List**

Apple tree 2 to 3 yrs.....15c	Crab trees 2 to 3 yrs.....15c
Peach trees 2 yrs.....15c	Plum trees 2 yrs.....25c
Cherry trees 4 to 6 ft.....30c	Pear trees 2 to 3 yrs.....15c
Dwarf pears 2 yrs.....25c	Quince 2 years old.....25c
Grape Nines 2 yrs old.....10	Gooseberries.....15c
Currants.....15c	Raspberries per 100.....\$2.00
Blackberries per 100.....\$2.00	Asparagus per 100.....\$1.00
Strawberry plants, 100.....76c	Roses, choice.....25c
Soft maple.....10 to 25c	Evergreen 2 to 3 ft 25c-35c
Lilac, purple and white.....25c	Honeysuckle & Spirea 25
Snowball and Syringea.....25c	Send for list of varieties.

C. T. ZIMMERMAN, PROP.

**THE PSYCHOLOGICAL CYCLONE**or brain storm that precipitated the general war in  
Europe leaves America the greatest country on earth  
where peace prevails. Things will be booming before  
long. Now is the time to buy that farm. For farm  
loans and insurance see**Northrip & Kirns Realty Company**

Cameron, Mo. - - - Phone 472

**Chas. R. Taggart**

Saturday, Aug. 7

We are pleased to announce Charles R. Taggart, "The Man From Vermont," for Saturday, August 7. As a purveyor to the great American Lyceum and Chautauqua public, no man enjoys a finer vogue or has had more return calls. Mr. Taggart is everywhere a prime favorite. Personally he embodies all of the qualities Chautauquans favor so strongly. He is always a gentleman of refinement and genial culture whose cleverness as an entertainer is never forgotten. He can make an audience laugh without losing its self-respect, nor its respect for him. He is an exceptionally clever violinist, using the instrument in a series of humorous sketches and imitations. He plays the piano too, and he uses his powers as a ventriloquist in a new and most effective and novel maner.

Altogether we promise a "big night" when Taggart comes and urge that no one miss hearing this genial Vermonter, this delightful "Yankee" entertainer.



### Your Dainty Summer Waists

are laundered here in a way that will please beyond your expectation. Your shirt waists are washed very carefully, are starched only where they need starch and are ironed beautifully. Our shirt waist ironers are real experts and the new, dainty, fresh, perfectly finished appearance which each waist has when it leaves their hands, delights every particular woman.

CAMERON STEAM LAUNDRY  
C. A. Biggerstaff, Prop. Phone No. 30

### Queensware

Ladies' and Childrens Ready-to-Wear  
Garments. Notions.

**MRS. NETTIE MCGILL**

### C. E. Jeffers Realty Company

Farm loans a specialty, at lowest rate of interest. See us we can save you money. We write both city and farm insurance—sell and exchange real estate and merchandise, write deeds, contracts, etc., and do all kinds of notary work. Bargains: a farm and city residence, owner non-resident.

116 1-2 E. Third St.. Cameron, Mo.

### LADIES'



While you are attending Chautauqua in our city, be sure to call on us; use our Rest Room. You will be welcome at any time whether you spend a penny or not.

*The Aurora*



### Dr. J. Whitcomb Brougher

Sunday, Aug. 8

On Sunday, August 8, we are to hear Dr. James Whitcomb Brougher, of Los Angeles on "What's Under Your Hat," "Home, Sweet Home, or How to be Happy, Though Married," and "The Speckled Bird, or Does Religion Need Reforming."

Dr. Brougher is one of the newer accessions to the Chautauqua platform, but his success is nothing short of marvelous. Many Chautauquas put him above Sam Jones in virility of speech, cleverness of wit, accurate interpretation of human fads and foibles and his vigorous and scathing arraignment of all kinds of folly.

Dr. Brougher is the successor of the famous Bob Burdette as pastor of the Baptist Temple, Los Angeles. Burdette, who reigned supreme for many years as America's most beloved humorist, was a great admirer of Brougher and the two men were very closely united in a beautiful friendship. When the doors of Brougher's Temple in Los Angeles are opened on Sunday, the thousands who stand waiting in the streets crowd in, filling every nook and cranny. Again, the doors are closed to avoid crowds and danger from panic. The audiences who gather are the largest which gather in America for church services.

Brougher's speech at Chautauqua, New York, last summer, was voted the greatest of the season.



Twenty years in Cameron

Twenty years of faithful service

Twenty years of honest methods

Twenty years of good values

### Our Record

We absolutely guarantee satisfaction in all your dealings with us. We carry more stock and are better equipped to do your work than ever before. Come and see us when in need of our service, we will treat you right.

## A. C. Buchholz & Son

Shop Opposite Park

Cameron, Mo.

## KINDIG & GAGE



DEALERS IN

Feed, Fuel, Ice and  
Field Grain

Phone 77

Cameron, - - - Missouri



## *Ye Olde Folks Choir*

Sunday, Aug. 8

In announcing Ye Olde Folks Choir Concert Company for Sunday, August 8th, we feel confident we are offering programs of rare excellence with the added value of pleasing novelty. This Company of five comprises a mixed quartet and an accompanist, which has proven its quality by three years of almost continuous concerting in the east. The accompanist, Miss Garland, is also a reader of real distinction, and a most charming young woman. Some years ago after graduation with highest honors at Mr. Leland Powers' famous school of the spoken word in Boston, Miss Garland took rank at once with the cleverest entertainers in New England and each year has seen a marked increase in her popularity. The programs of the Company includes three distinct features, the first being their ensemble singing, in which they are unsurpassed. Moreover they bring a repertoire entirely new to the Chautauquas. The portions of their programs devoted to "Ye Olde Folks" is done in the costumes of the Colonial period and the music presented is largely humorous; nevertheless, there is a distinct charm to those songs of a century and a half ago. The third feature includes scenes from Grand and Comic opera in costume and these are particularly interesting. The members of the Company are all soloists of recognized merit and we look forward to their coming with much pleasure.



## ELLIS & KIMES

Dealers In

HARDWARE, FURNITURE, RUGS, LINOLEUM  
PAINTS, OILS, VARNISHES

South of Park Cameron, Mo.

## THE NEW BUNGALOW OFFICE BUILDING

312 North Main Street now occupied by Dr. E. E. Shaw, Dr. J. C. Bowman and Dr. T. H. Tye

### DR. E. E. SHAW

HOMEOPATHIST

Office Hours: 10 to 12; 2 to 5 and 7 to 9 p. m.

Phones: Office 21; City 160, Mutual 74

### DR. J. C. BOWMAN

PHYSICIAN AND SURGEON

Phones: Res, 240; office 257

Office hours: 10 to 12; 2 to 5 and 7 to 8 p. m.

### DR. T. H. TYE

DENTIST

Hours 8 to 12 and 1 to 5 p. m.

Phones: City 21x; Mutual 102x

## White Way Meat Market

McCLEAN & LIVERS

Fresh and Cured Meats

Fresh Fish on Friday

The Old Reliable

Established 1878

# The Farmers Bank

of Cameron

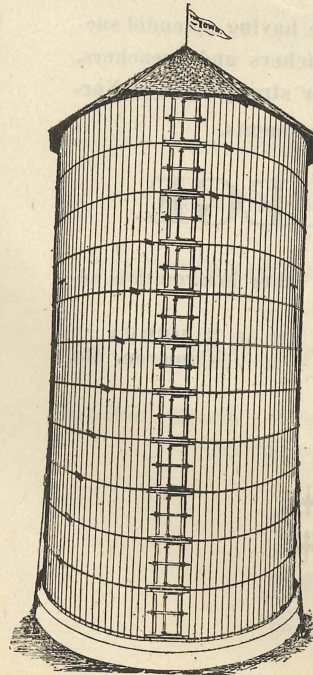
Capital and Surplus, - \$125,000.00

LEGITIMATE BANKING IN ALL ITS  
BRANCHES

OFFICERS—N. S. Goodrich, President;  
W. G. Sloan, Vice-President; J. H. Botthoff,  
Cashier; H. B. Cooper, Ass't Cashier.

DIRECTORS—N. S. Goodrich, Geo. O.  
Wallace, C. A. Risley, J. A. Livingstone, W.  
G. Sloan, C. A. Gross, H. B. Cooper, T. L.  
Wiley, J. C. McComb.

Interest Paid on Time Deposits and Sav-  
ings Accounts



## J. B. RUSSELL

Dealer In

Lumber and  
Building Material

Can save you money on

SILOS

Let me figure with you

City phone 455 Mut. 72

East of Park





Why should young people within fifty miles of Cameron go to any other College?

## MISSOURI

Cameron is easy of access from all directions. M. W. C. has a strong, full course College; a four-year Academy, Commercial, Normal, Music, Expression and Art Courses.

A well equipt faculty.

An unexcelled student body.

## WESLEYAN

Our graduates are having splendid success, especially as teachers and preachers.

We shall this year strengthen the Normal and Science Departments.

## COLLEGE

For catalogue or other information, address the President,

DR. H. R. DEBRA,  
Cameron, Mo.



BURNHAM SHAW

## GENERAL AUTO LIVERY

City Phone, - 160

Mutual, - - - 21



## *The* DAILY NEWS



ESTABLISHED 1905

ALL THE HOME NEWS

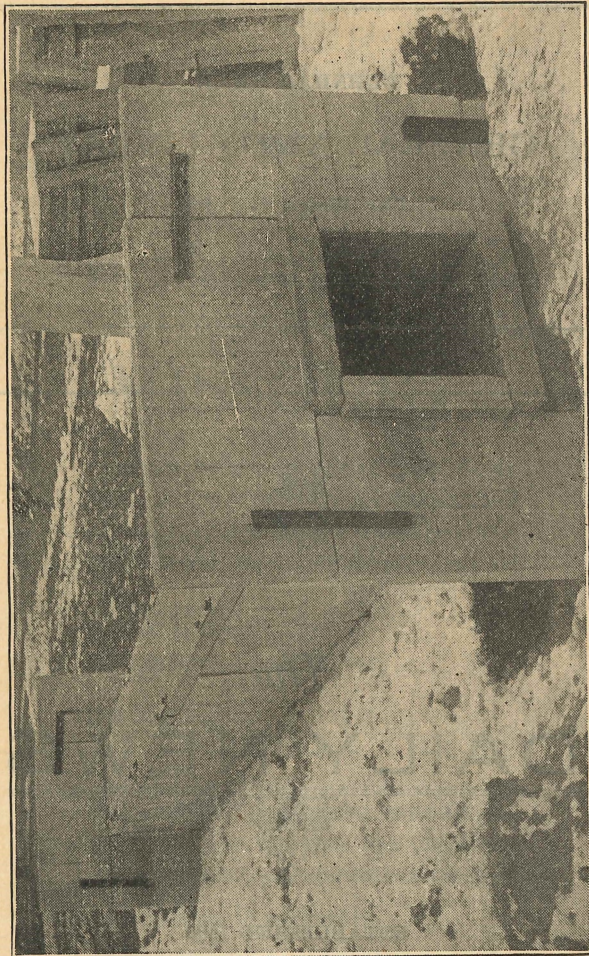
VALUABLE ADVERTISING MEDIUM

## *Job Printing*

Receives Special Attention by Workmen  
Who "Know How."







## Concrete Culverts In Slabs Ready for Use

The road is not blocked during its construction. Erect half and finish before the other half of road is torn out. Every block is reinforced. Write for prices and send notice of your Board meetings.

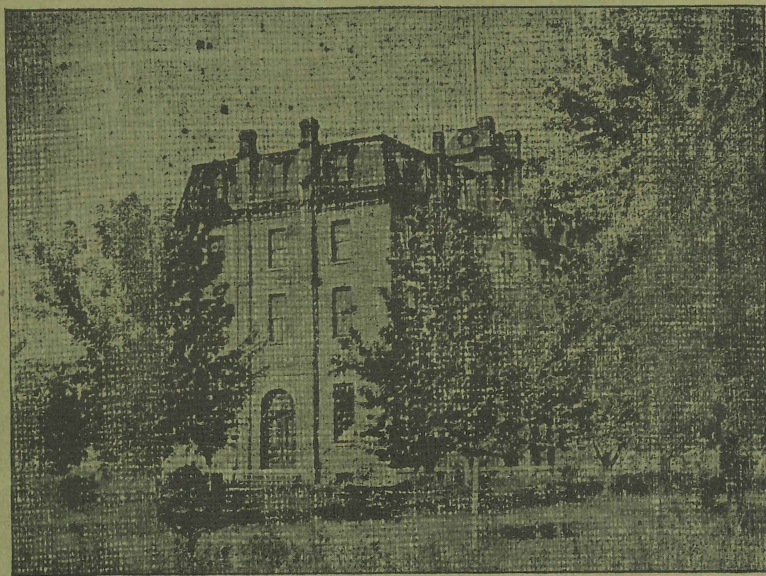
This culvert has a square top and bottom and square sides; consequently cannot sink in the mud or quicksand. A plate girder each direction.

This culvert won't break under a threshing machine or saw-mill outfit; nor will it break the purchaser to buy it. It is inconvenient to be broke; also to buy an article that breaks. You and I will sooner or later go down but this culvert never will.

**CAMERON BRIDGE CO.**  
Builds Concrete and Steel Bridges  
All Kinds of Steel Work

## Kidder Institute

### Our New Dormitory



Which was completely remodeled a year ago, is said to be one of the largest and most modern dormitories in the State, with steam heat, baths, toilets, laboratories, etc. The Men's Hall will be completely remodeled and modernized in every way. The boys will now have accommodations equal to that of the girls.

The Institute sustains a complete College Preparatory, Teachers, Music, Book-keeping, Shorthand and Typewriting Departments under specialists. The leading features are high ideals, thorough scholarships, noble character, Christian spirit, moderate expense, wholesome surroundings and superior advantages.

Expense as usual very reasonable. Tuition \$10 to \$12 a term. Board \$2.00 a week. Furnished room 35c to 50c a week. Correspondence solicited. Catalogue free.

**G. W. SHAW**

PRINCIPAL

Kidder, . . . . . Missouri