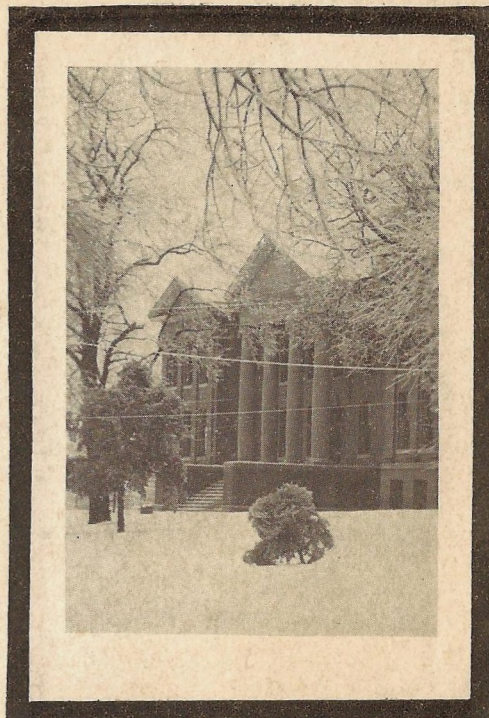


The Owl 1916
Missouri Wesleyan College

THE OWL



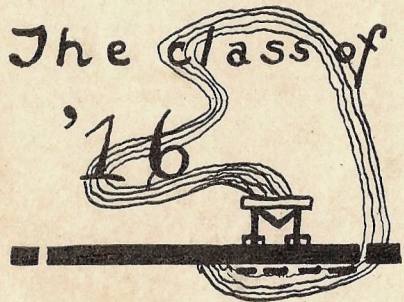
Richard E. Hawn.



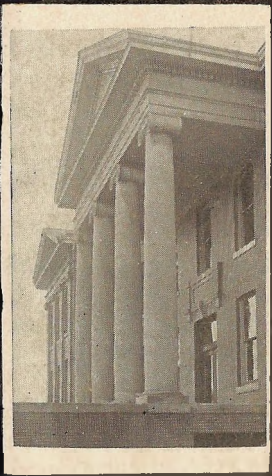
EX-LIBRIS




The class of
'16



The **OWL** 1916



MISSOURI
WESLEYAN

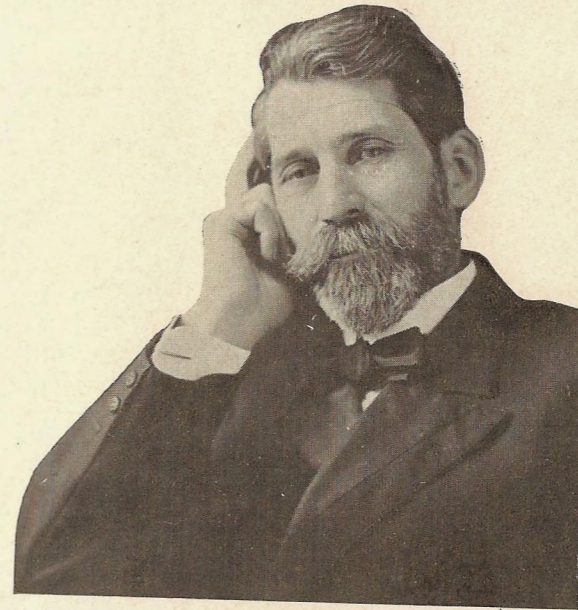


A Year Book
Given in Poetry, Prose,
and Pictures

In order to express our Appreciation to

Dr. and Mrs. DeBra

For the efforts which they are putting forward to
establish our college upon a foundation which
will endure for many years to come,
we, the Junior Class, sincerely
Dedicate this Book

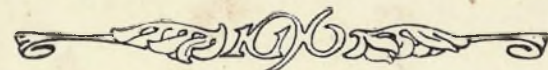




Greetings

Without apology, we present our best and most conscientious efforts for your inspection and analysis, without self-praise, for we realize how far short of our ideals we have fallen.

We, the class of '17 offer to you this ninth volume of the "Owl."



Board of Trustees

H. R. DeBRA, A.M., B.D., D.D. - - - - - President, Ex-officio

TERM EXPIRES 1916

HENRY E. BRAGG, Esq. - - - - - St. Joseph, Mo.
 REV. J. R. HARPER - - - - - Chillicothe, Mo.
 REV. BEN F. JONES, D.D., Dist. Supt. - - - - - Cameron, Mo.
 JOE McCALLISTER, Esq. - - - - - Milan, Mo.
 REV. CHAS. E. PETREE - - - - - St. Joseph, Mo.
 REV. E. B. THOMPSON, A. M. - - - - - Memphis, Mo.

TERM EXPIRES 1917

REV. J. J. BENTLY, D. D. - - - - - St. Joseph, Mo.
 REV. W. F. BURRIS, D. D., Dist. Supt. - - - - - Maryville, Mo.
 H. ELLWOOD, Esq. - - - - - Cameron, Mo.
 H. F. LAWRENCE, Esq. - - - - - Cameron, Mo.
 FRED. WIGHTMAN, Esq. - - - - - Braymer, Mo.

TERM EXPIRES 1918

FRED C. BARBER, Esq. - - - - - Skidmore, Mo.
 REV. C. J. CHASE, D.D., Dist. Supt. - - - - - St. Joseph, Mo.
 W. R. CLELLAND, Esq. - - - - - New Hampton, Mo.
 REV. GEO. H. ZENTZ, A.B., S.T.B., D.D. - - - - - Cameron, Mo.

TERM EXPIRES 1919

C. D. BELLOWS, Esq. - - - - - Maryville, Mo.
 REV. W. B. CHRISTY, D.D., Dist. Supt. - - - - - Kirksville, Mo.
 REV. C. J. ENGLISH, D.D. - - - - - Brookfield, Mo.
 J. F. SHEPHERD, Esq. - - - - - Plattsburg, Mo.

TERM EXPIRES 1920

A. J. ALTHOUSE, Esq. - - - - - Cameron, Mo.
 FRANK B. KLEPPER, Esq. - - - - - Cameron, Mo.
 GEO. W. MOORE, Esq. - - - - - Hamilton, Mo.
 REV. E. C. MORGAN - - - - - Braymer, Mo.
 REV. J. O. TAYLOR, D.D. - - - - - Bethany, Mo.





Order of Books

One—College

Two—Academy and Special Departments

Three—Organizations

Four—Athletics

Five—Scenes and Locals



BOOK

1

College







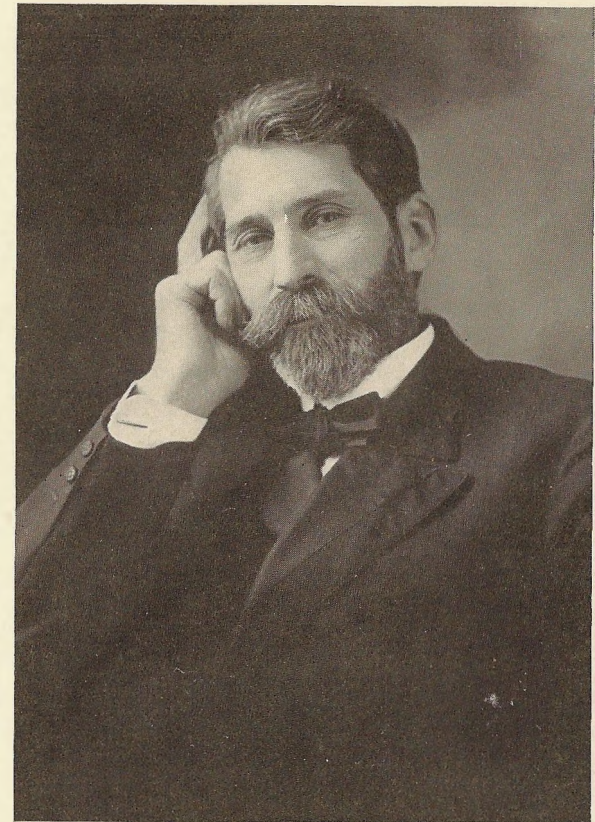
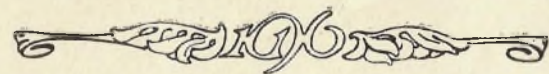
The Teacher's Prayer

O be it mine to live
In love and faith and hope;
To have, that I may give,
A vision of splendid scope!

And be it mine to know
Such faith in God and man,
That daily tasks shall grow
Into a perfect span,

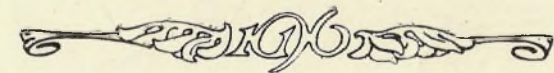
To lead from here to there,
To lead from now to then;
And be it mine to share
My good with fellow-men.

—J. W. B



HARVEY RUFUS DeBRA
President

A.B., Northwestern University, 1898, A.M., 1900;
B.D., Garrett Biblical Institute, 1900; D.D., Cornell
College, 1910; Principal Epworth Seminary, Ep-
worth, Iowa, 1901-1908; Educational Secretary, Cor-
nell College, Mt. Vernon, Iowa, 1908-1909; President
Missouri Wesleyan College, 1909.





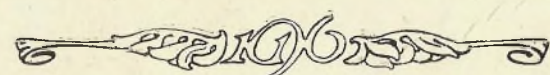
BENJAMIN C. GLOVER—
Professor of Mathematics

B.S., Northwestern University, 1907; Graduate Student Chicago University, Summer 1909; Graduate Student, University of Minnesota, 1913-14; 13 years' teaching experience; Professor of Mathematics, Missouri Wesleyan College, 1914.

SARAH KATHERINE DeBRA—
Dean of Women

FRANK WESLEY CLELLAND—
*Professor of Philosophy, English
Bible and Christian Evidences*

A.B., Missouri Wesleyan College, 1907; A.M., Boston University, 1910; Professor of Philosophy and English, Missouri Wesleyan College, 1910-12; Professor of Philosophy and Christian Evidences, 1912.



PROF. GLOVER—

Believes in centralized and systematized efforts.
Long for this world.
A friend to the fellow who digs.

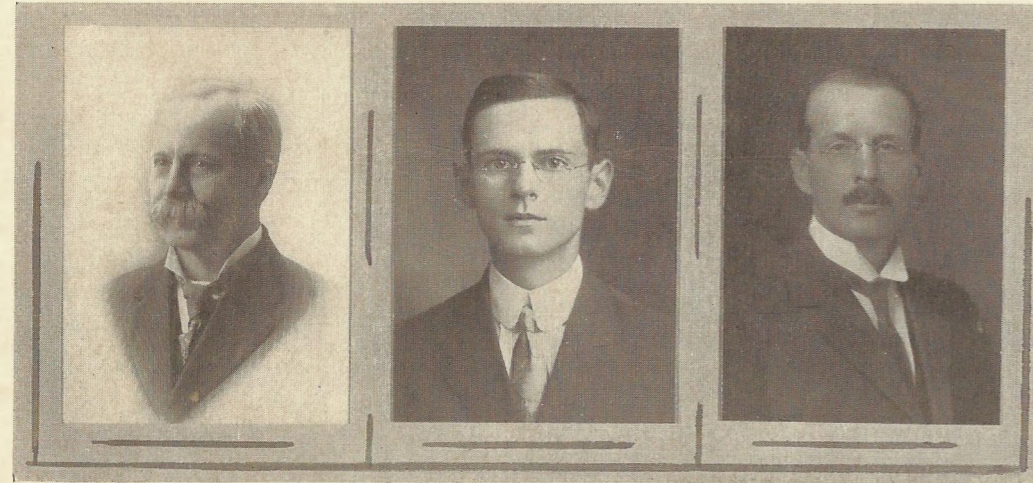
MRS. H. R. DeBRA—

"Mater" to the girls.

PROF. CLELLAND—

Keenest mind in Missouri Wesleyan.
No respecter of individuals.
Advocates a broad education.





L. S. DAUGHERTY—
Professor of Chemistry

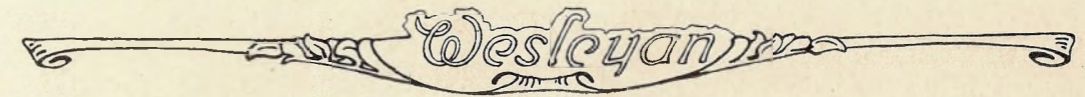
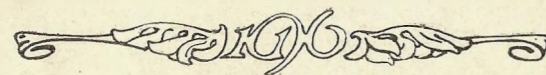
B.S., University of Illinois; M.S., University of Illinois; Ph.D., Illinois Wesleyan University; Graduate Student, University of Chicago, 1893-94; Special study of marine forms of Pacific coast, summer 1899; Professor of Science, Missouri State Normal School, Kirksville, Mo., 1897-1913; Student in Germany, 1907; Summer study at Iowa Agricultural College, Ames, Ia., and at University of Michigan; Professor Agriculture and Chemistry, Missouri Wesleyan College, 1913.

CLIVE RAYMOND MEGEE—
Professor of Agriculture

B.S., in Agriculture, Missouri University, 1914. Professor in Agriculture Missouri Wesleyan College, 1915.

JOHN WATSON BEACH—
Professor of Ancient Language

A.B., University of Michigan, 1896; residence requirements for the Doctor's Degree completed at the same and thesis begun; student in the American School of Classical Studies in Rome, 1900-01; Assistant in Latin, University of Colorado, 1897-98; Substitute Instructor in Greek and Latin, Ohio State University, 1900. Professor of Greek and Latin, Mount Morris College, 1902-04; Fort Worth University, 1904-05; Scio College, 1905-06 and 1908-11; Professor of Greek, Juniata College, 1906-07; Professor of Latin, Fargo College, 1911-13; Professor of Greek and Latin, Missouri Wesleyan College, 1915.



DR. ROSS—

Has wit, but seldom shows it.
Energetic student, and a deep thinker.
Thanks are due for his assistance in arranging the plumage of the "Owl."

MISS NEWBECKER—

Has a smile for everybody.
Believes in mutual friendship among the Faculty members.
Conscientious in the performance of her duties.

PROF. COPE--

Uses sixty seconds out of every minute.
An idealist.
Cans hoboes.





JOSEPH E. LAYTON—
Director of Piano Department and Instructor in Piano, Pipe Organ and Analysis

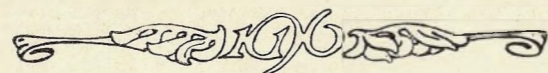
After completing a course at Mt. Allison Conservatory of Music, New Brunswick, Canada, Mr. Layton spent three years in Leipzig, Germany, and studied with the following masters: Johannes Weidenbach, Organ; Dr. Robert Papperitz and Heinrich Klesse, Piano; in harmony and counterpoint, Gustav Schreck and Paul Quasdorf. He also studied Organ under Henry M. Dunham, of Boston, and has had a teaching experience of many years. Instructor in Pianoforte, Missouri Wesleyan College, 1907.

FRANCES L. JONES—
Instructor in Piano

Graduate of Liberty Ladies' College, Conservatory of Music, 1912; Instructor in Piano, Missouri Wesleyan College, 1912.

HERBERT CLEMENT KELSEY—
Instructor in Voice and Musical History; Chorus Director

Graduate in Voice, Missouri Wesleyan College; 1907; Special Student in Voice and Harmony and History, Northwestern University School of Music, and under such instructors as Hackett and Barroff. Instructor in Voice, Harmony and Musical History in Missouri Wesleyan College, 1907.



DR. DAUGHERTY—

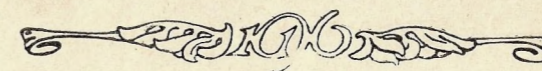
Endless joker, do you see the point?
His optimism grows as his years.
He numbers his friends by his acquaintances.

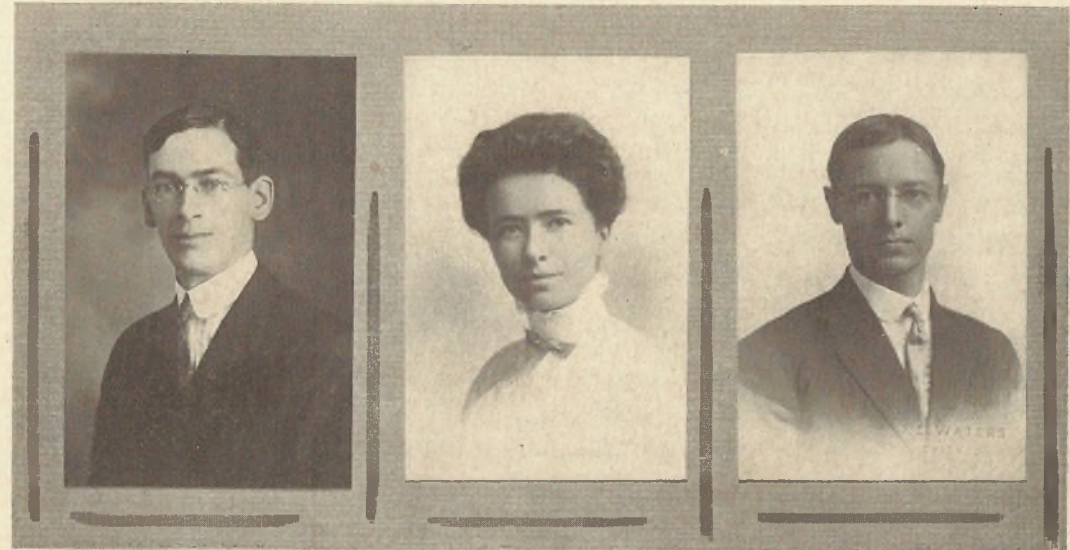
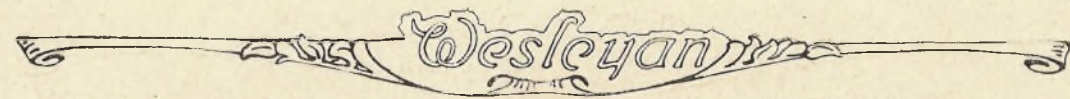
PROF. MCGEE—

Small, but mighty. Silent but sure.
Couldn't farm without him.
Not quite a chapel orator.

PROF. BEACH—

Witty, with an abundance of practical jokes.
Alias John Watson. M. W. C. Author.
A Christian gentleman; very accommodating to all, especially the Junior Class.





EARLE DUDLEY ROSS—
*Professor of History and
Social Science*

Ph.D., Syracuse University, 1909; Ph.M., *ibid.*, 1910; A.M., Cornell University, 1912; Ph.D., *ibid.*, 1915; graduate student, University of Wisconsin, 1913-14; Assistant in History and Economics, Syracuse University, 1909-10; Instructor in History and Economics and in charge of department Muhlenberg College, 1910-11; Assistant Reference Librarian Cornell University, 1911-12; Fellow in American History, *ibid.*, 1912-13; Instructor in Economics and Sociology, Syracuse University Summer School, 1910-13; Assistant in American History, Cornell University, 1914-15; Professor of History and Social Science, Missouri Wesleyan College, 1915.

ETHEL EILEEN NEWBECKER, Preceptress—
Professor of English and Acting Professor of German

A.B., Nebraska Wesleyan University, 1911. A.M., University of Chicago, 1913. Has completed 12 majors in English toward Ph.D., Muskegon, Michigan, second semester, 1913-14. Instructor in English, Iowa State Teacher's College, 1914. Instructor of English and Expression, Normal College, St. Paul, Nebraska, Summer 1915. Professor of English in Missouri Wesleyan College, 1915.

ALFRED B. COPE—
Professor of Education

A.B., Campbell College, 1904; Principal, Meriden, Kans., 1904-05; Fellow in Education, University of Kansas, 1905-06; A.M. in Education, University of Kansas, 1906; Supt. of Schools, Hillsboro, Kan., 1906-09; Principal of High School, McPherson, Kan., 1909-11; Fellow in Education, University of Chicago, 1911-13. Has completed residence work for the Ph.D. in the Department of Education, University of Chicago; Professor of Education in Missouri Wesleyan College, January, 1913.



PROF. LAYTON—

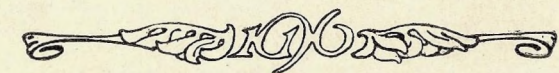
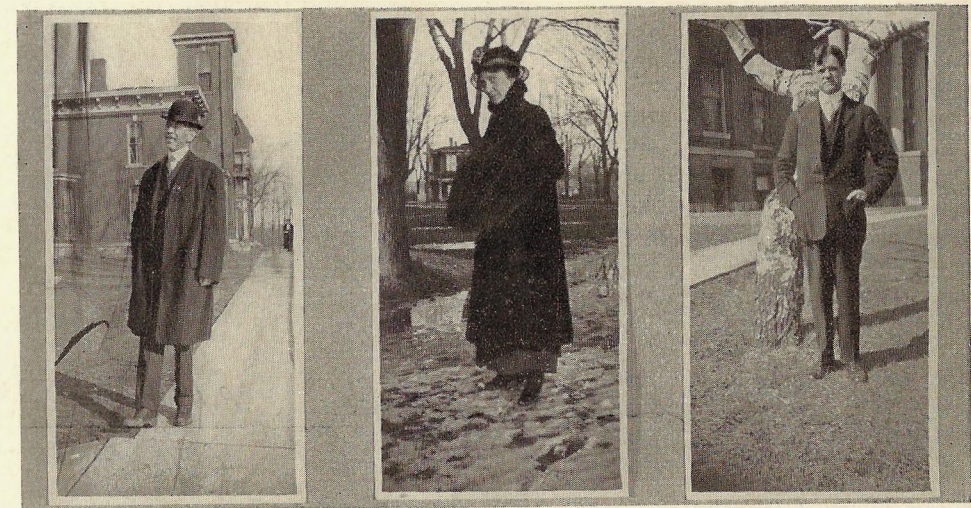
Unrivalled in the technic of music.
Believes in being on time.
Tends strictly to his own department.

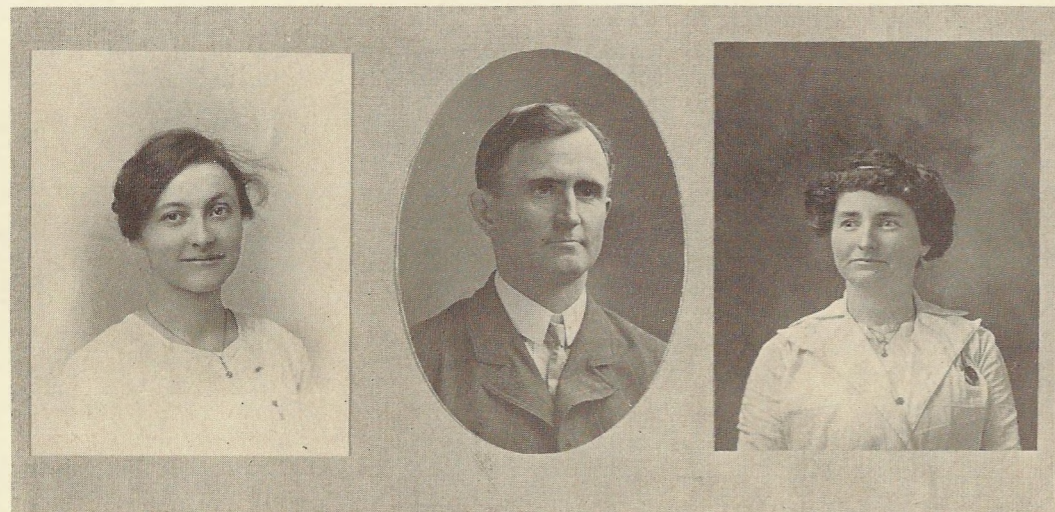
MISS FRANCES L. JONES—

Excellent performer on the piano.
Already in the promised land.
Ambitious, artistic, energetic.

PROF. H. C. KELSEY—

Wesleyan's utility man.
Inspiration of college songs.
Knows his business.





FLORENCE WINTER McKEE—
Instructor in English and Latin

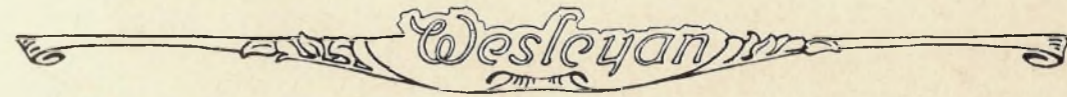
A.B., Missouri Wesleyan College, 1915.

A. J. NEILL—
Principal of Business Department

Graduate of School of Business, Simpson College; nine years' experience as teacher of Commercial subjects; three years' experience in practical business; Principal of Business Department, Missouri Wesleyan College, 1915.

STELLA L. DODD—
Instructor in English and Physics

B.S., Missouri Wesleyan College, 1913; M.S., Missouri Wesleyan College, 1914; Instructor in charge of the Academy English, Missouri Wesleyan College, 1914. Instructor in charge of Academy English and Physics, 1915.



MRS. McKEE—

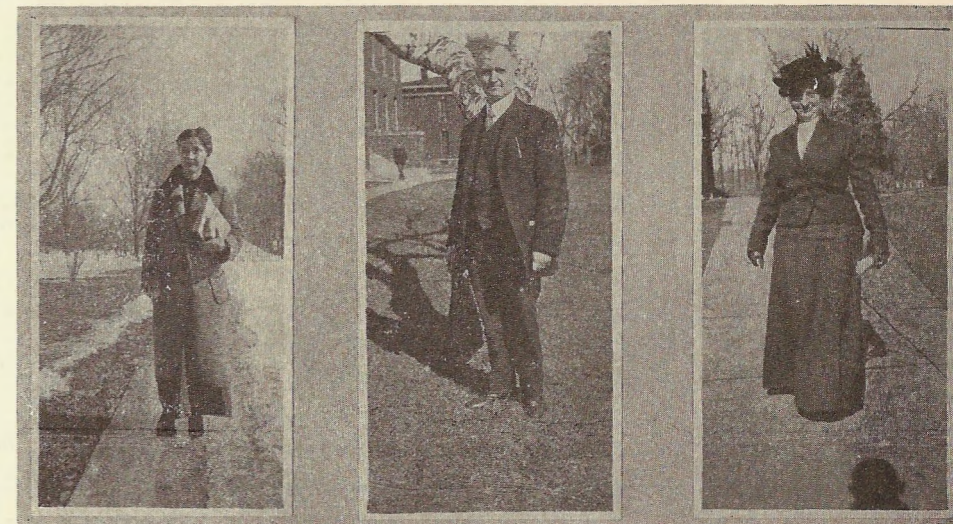
Equal to any emergency.
"The heart of her husband trusteth in her,
He shall have no lack of gain."

PROF. NEILL—

Booster for the College.
Spencerian artist.

MISS STELLA DODD—

Thorough and conscientious in her work.
Precise, prim, proper, and prudent.





BLANCHE SMITH—
*Instructor in Elocution
and Oratory*

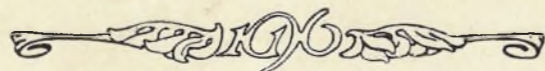
Student of Expression, Missouri Wesleyan College, 1906-09; Graduate of Neff College, 1910; Teacher of Expression in Public Schools, Abilene, Texas, 1911; two years of platform work; B.L., Neff College, 1914; Lyceum work, 1914-15; Instructor in Elocution and Oratory, Missouri Wesleyan College, 1915.

LEORA BLANCH ELLWOOD—
Instructor in Home Economics

A.B., Missouri Wesleyan College, 1911; Teacher in Cameron High School, 1911-15; Summer of 1914 in Chicago University. Instructor in Domestic Science, Missouri Wesleyan College, 1915.

CARRIE F. SHEPHERD—
Instructor in Art

Graduate in Teacher's Course, Art Department, Illinois Wesleyan University; one year Assistant Teacher, Illinois Wesleyan University; two years' Instructor, Missouri Wesleyan College; twelve years' teaching experience, Summer Student, Chicago Art Institute, 1915. Instructor in Art, Missouri Wesleyan College, 1915.



MISS SMITH—

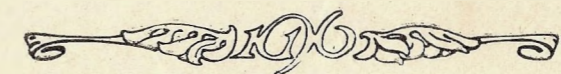
Excellent in characterization.
Quiet and unassuming and of a sweet disposition.

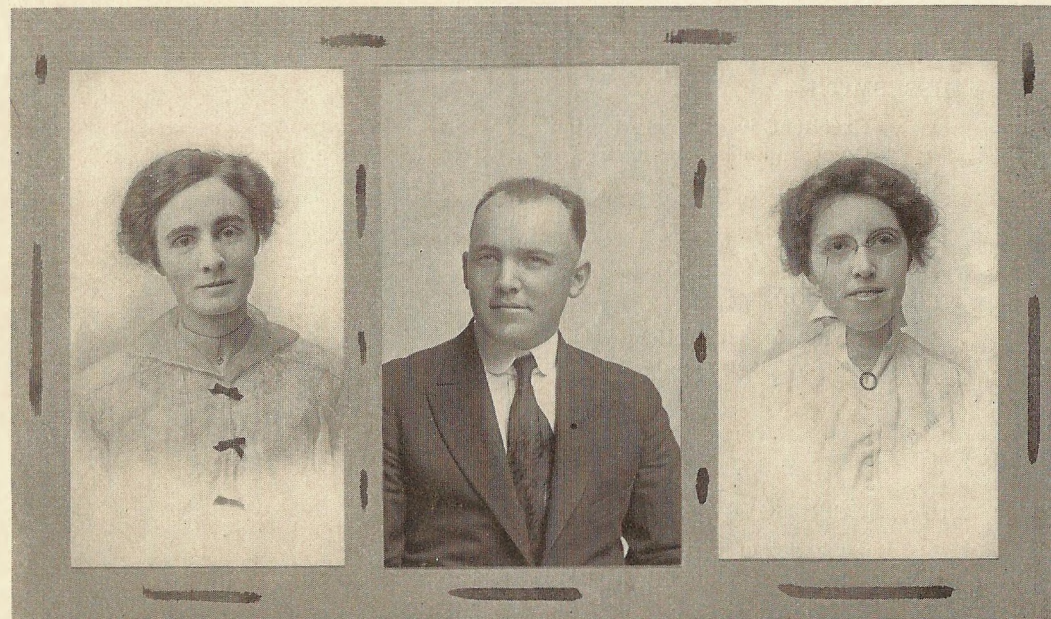
MISS ELLWOOD—

Trying to "domesticate" M. W. C.
Has a sincere interest in the social life of the students.

MISS SHEPHERD—

An artist of rare ability.
The beauty of her pictures is rivaled only by the beauty of her character.





ETHEL M. WILLIAMSON—
*Director of Department of
Stenography*

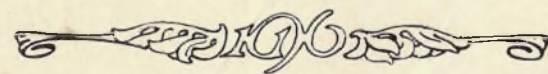
Graduate in Business and Stenography, Missouri Wesleyan College,
1912; Director of Department of Stenography, 1913-15.

JAMES PIXLEE—
Athletic Director

Member of Foot Ball Team of Missouri University, 1909-10, 1910-11,
1911-12; Member of Base Ball Team of Missouri University, 1910;
Director of Athletics, Missouri Wesleyan College, 1914.

F. ESTHER WILSON—
Instructor in History

A.B., Missouri Wesleyan College, 1913; Teacher in Princeton, Mis-
souri Schools, 1913-14; Instructor in charge of Academy History.
Missouri Wesleyan College, 1914-15.



MISS WILLIAMSON—

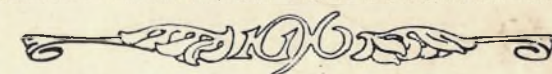
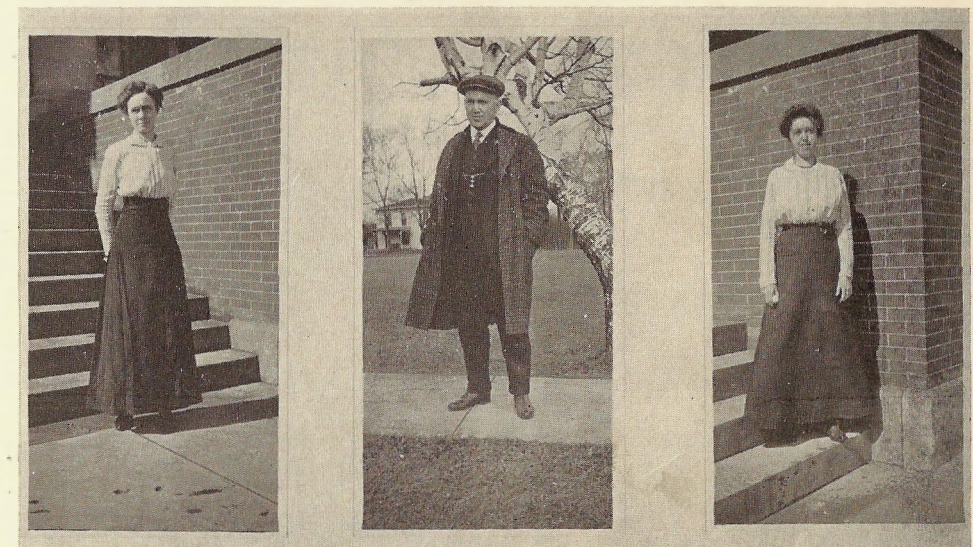
Does three women's work.
Her patience cannot be measured by her size.

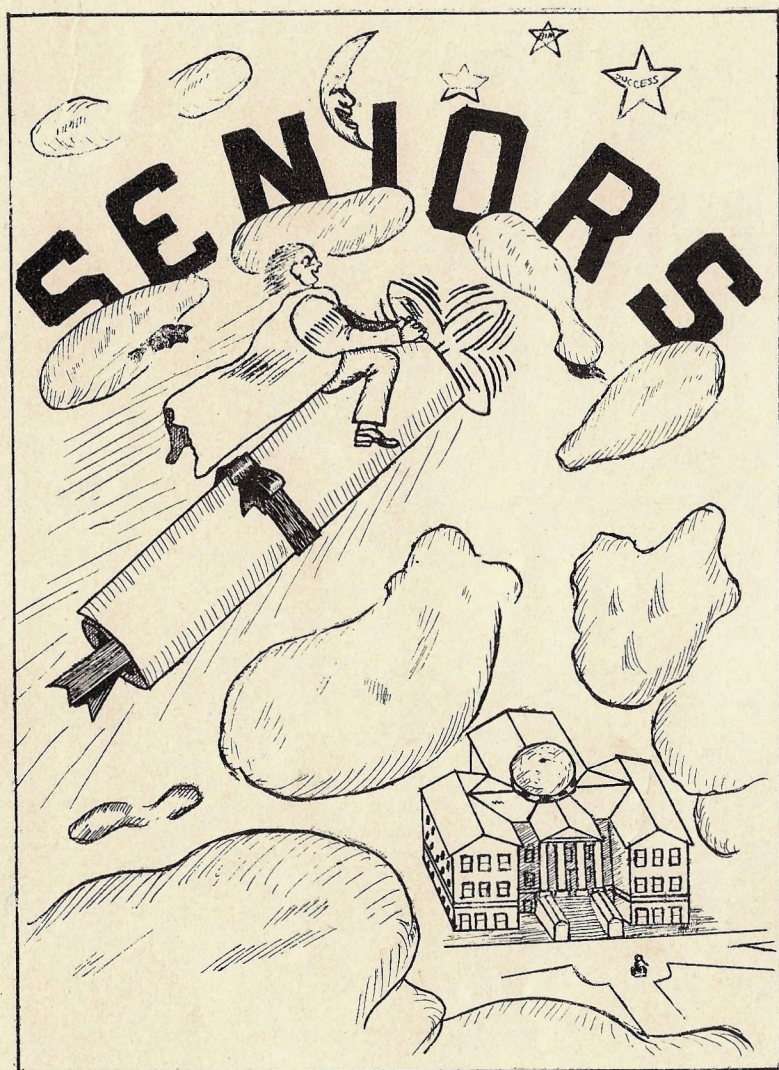
COACH PIXLEE—

We are all proud of our coach.
Never stops short of success.
A strategist.

MISS WILSON—

Has an individual interest in each student.
"Blessed is the man whom she chooseth."





Senior Class History

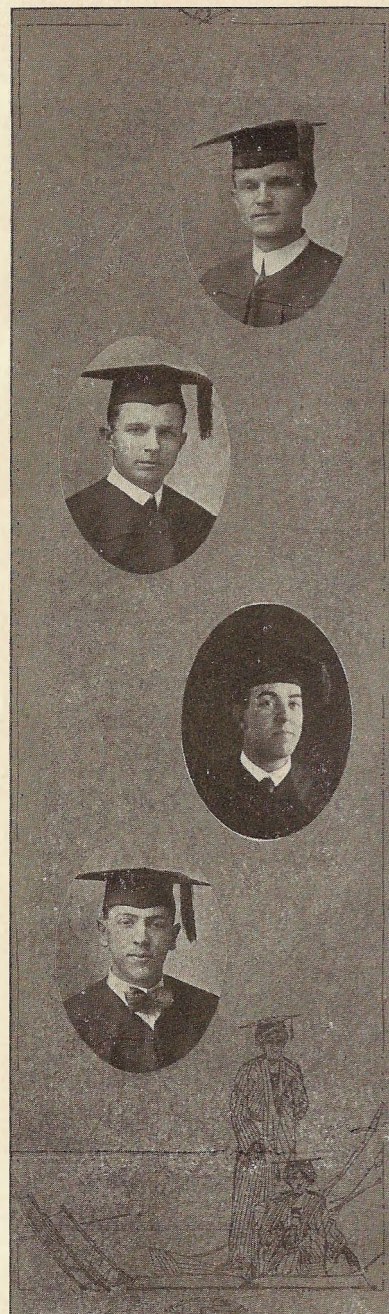
The year of 1912 and 1913 was an important one in the history of Missouri Wesleyan College, for in that year the present Senior Class entered its halls of learning. This motley array of thirty high-spirited young Americans had learned practically all there was to learn, but had decided on a college education in order to pass a few years of leisure before going forth to impart their learning to the world. By the close of the year, however, a few had seen a vision of fields beyond their former scope of knowledge.

Out of this class of thirty members, only nine, entered the Sophomore year. Gladys Ayers, Frances Jones and Adeline Taylor chose the alluring study of music; Maude Lane, Olga Moore and Raymond Wade entered other schools; Elsie Elliot, Ailie Cleveland and Daisy McCool, in the capacity of school teachers, dedicated their time to molding the minds of the young; Ruth Farwell and Victor Lockhart, skipped the Sophomore year, and became Juniors; Cecil Christian and Gertrude McClean and Madge Reid, being unusually susceptible to the darts of Cupid, signed up for a life long course in Household Economics. Thus by elimination only the following members were left in the Sophomore year; "Pep" Yetter, "Ing" Poland, Mary Carson, Florence Winter, Bessie Stoner, Verner Kendall, Greta Snider, W. J. Butler, and Burnham Shaw.

From this number five entered as Juniors the following year: Mary Carson, Florence Winter and W. T. Butler, going to swell the ranks of the illustrious Seniors, and Burnham Shaw entering Kansas City Dental College; Miss Edna Oesterle, of Farmington, Mo., joined our ranks, and added materially to the scholastic standing of the class. The Junior year is especially memorable because of the many pleasant and profitable hours spent in editing the "Owl."

Now we have come to the long coveted position of dignity and honor—that of Seniors. Our only regret is, that of the 30 original members, only five are left to represent that enthusiastic band. "Pep" Yetter, our popular leader, left us, but we were reinforced by three members of the Sophomore class, Byron Horn, Nelson Horn and Thomas McKee.

Looking back with pleasure over our four years of experience, we pass out, some to enter more advanced schools of learning, others to their chosen fields of activities. In whatever line of work we may find ourselves, may we ever be worthy of our Alma Mater.



BYRON E. HORN
 Philosophy
 Cameron, Mo.
 Preacher; Y. M. C. A.; Adelpian;
 President of Editorial Association,
 Criterion Staff; married.
 Work? Why that just runs in our
 family.

NELSON P. HORN
 Social Science
 Cameron, Mo.
 Preacher; Y. M. C. A.; Adelpian;
 Editor-in-chief Criterion; yell lead-
 er; married.
 A number I, double X, pure quill;
 all gold fellow.

VERNOR KENDALL
 Education
 Cameron, Mo.
 Y. M. C. A.; Excelsior; single.
 To describe him as he is, we lack
 the talent.
 To forecast his future, we dare
 not.

THOMAS P. McKEE
 Philosophy
 Cameron, Mo.
 Adelpian; President Y. M. C. A.;
 Steward of the Dining Club; married.
 He found it was no good for man
 to be alone.



EDNA OESTERLE
 English, Social Science
 Farmington, Mo.
 Ruthean; Y. W. C. A.; Head Li-
 brarian; Criterion staff.
 To those that know thee not, no
 words can paint,
 And those who know thee, know
 all words are faint

J. F. POLAND
 Social Science, Physical Science
 Cameron, Mo.
 Adelpian; "W" Association; Cri-
 terion Staff; Football team, 1, 2-
 (Capt.), 3, 4-(Capt.) Basketball, 1, 2,
 3; Baseball 1, 2, 3; Class President;
 Athletic Board of Control; semi-
 single.
 Always above par wherever you
 find him.

BESSIE STONER
 English, Education
 Cameron, Mo.
 Ruthean; Ladies' Glee Club; As-
 sistant in English; semi-single?
 Still water runs deep.

GRETA SNIDER
 English, Biological Science
 Cameron, Mo.
 Ruthean; Sec'y. Editorial Associa-
 tion; Ladies' Glee Club; semi-single.
 Steady, Studious, Successful.
 Still trying to solve the unfathom-
 able "Cooper."



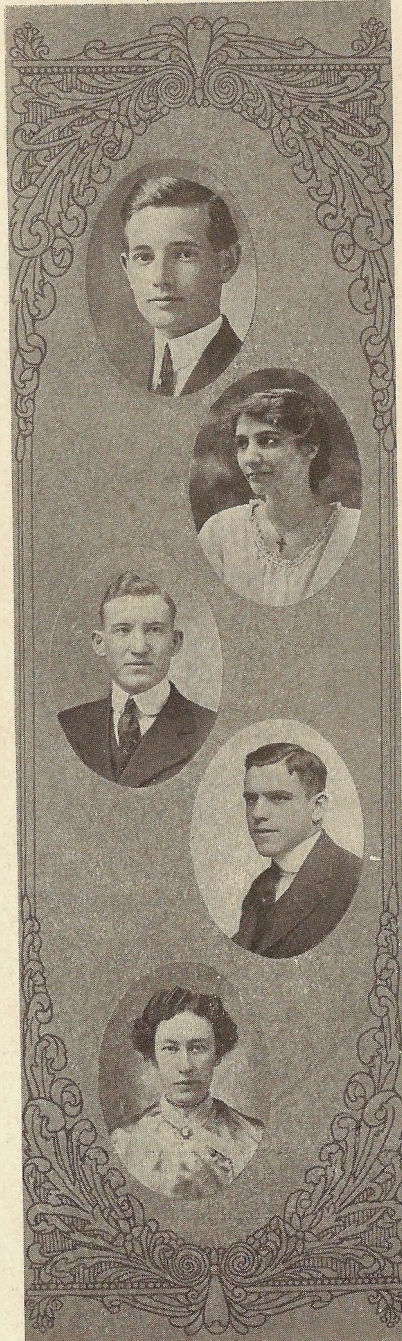
History of the Class of '17

The Class of '17, as Freshmen, numbered 25; as Sophomores, 22. This year, by the process of natural selection, only seven, Merlin Cooper, Alva Englehart, Maude Gibson, May Hatfield, Eugene Hills, Robert Parshall, and Reba Tomlin returned as Juniors. Those who have known the class during the three years will heartily agree that this is truly a case of the survival of the fittest. During the summer of 1913 Alice Olinger attended school at M. W. C. and liked it so well that she returned in the fall of 1914 and is now a member of this august class. Ruth Ellwood belonged to the class of '16, but in 1914 a call came for someone to instruct a little group of country children and Ruth nobly responded to the call. This enabled her to drop out of the Class of '16 and, when she returned, she became a member of the more illustrious Class of '17. Vincent Ellwood, coming up from the Academy, worked either himself or the faculty, for this year he had enough credits to be a Junior.

This completes the list of ten in all, and though it is rather a small class, in numbers, it is noted for the efficiency of its members and their mental abilities have been so recognized by the faculty that, by the time they reached the Junior year, it was deemed necessary to have school six days in the week in order to give the Juniors time to recite at least a small portion of what they were learning.

Of course the influence of such a class has its effect upon others and as a result the school is growing better, each student and class striving to follow in the footsteps of the class of '17.

Then here's to the class of '17!
The class with ideals so true!
If you follow the class of '17,
There's success and joy for you.



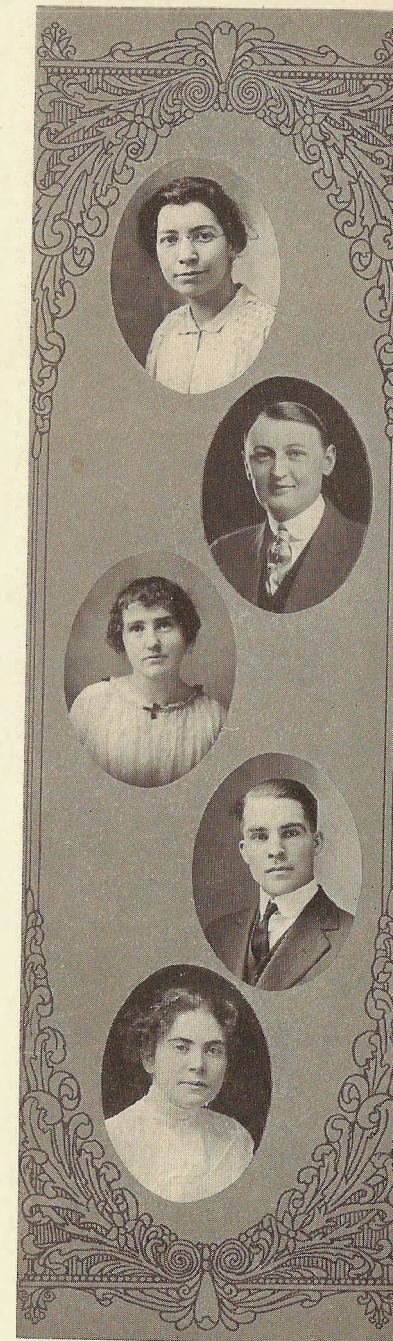
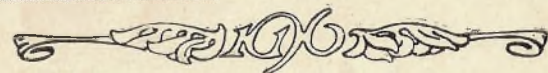
MERLIN L. COOPER, "Coop"
 Biological Science, Social Science
 Mabel, Mo.
 Excelsior; Editor-in-Chief "Owl"; Assistant in Chemistry and Bacteriology; President Junior Class; semi-single.
 Man of sterling character. Can be depended on, especially on calling night.

RUTH A. ELLWOOD
 Modern Language, Sociology
 Cameron, Mo.
 Ruthean; Y. W. C. A. cabinet; Athletic Board; Basketball.
 "You know,"—enters heartily in all forms of College Life.

ALVA F. ENGLEHART, "ENGLE"
 Mathematics, History
 Cameron, Mo.
 Adelpian; Men's Glee Club; Quartet; "W" Association; Orchestra; Business Manager "Owl"; Assistant in Mathematics; semi-single.
 Not a man of words, but of excellent deeds.

VINCENT ELLWOOD, "Doc"
 Physical Science, English
 Cameron, Mo.
 Adelpian; Football team; "W" Association.
 All's well that ends in a rough house.
 Worships at "Becket" Shrine.

MAUDE GIBSON
 Latin, History
 Cameron, Mo.
 Y. W. C. A.
 A quiet, unpretentious girl, who works and doesn't talk about it. Big hearted and generous, always ready to help any one in trouble.



MAY HATFIELD
 Latin, Education
 Braymer, Mo.
 Aesthesian; Pres: Y. W. C. A.
 Clever, cheerful, amusing and practical.

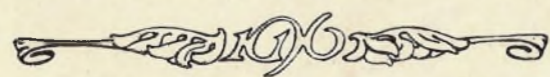
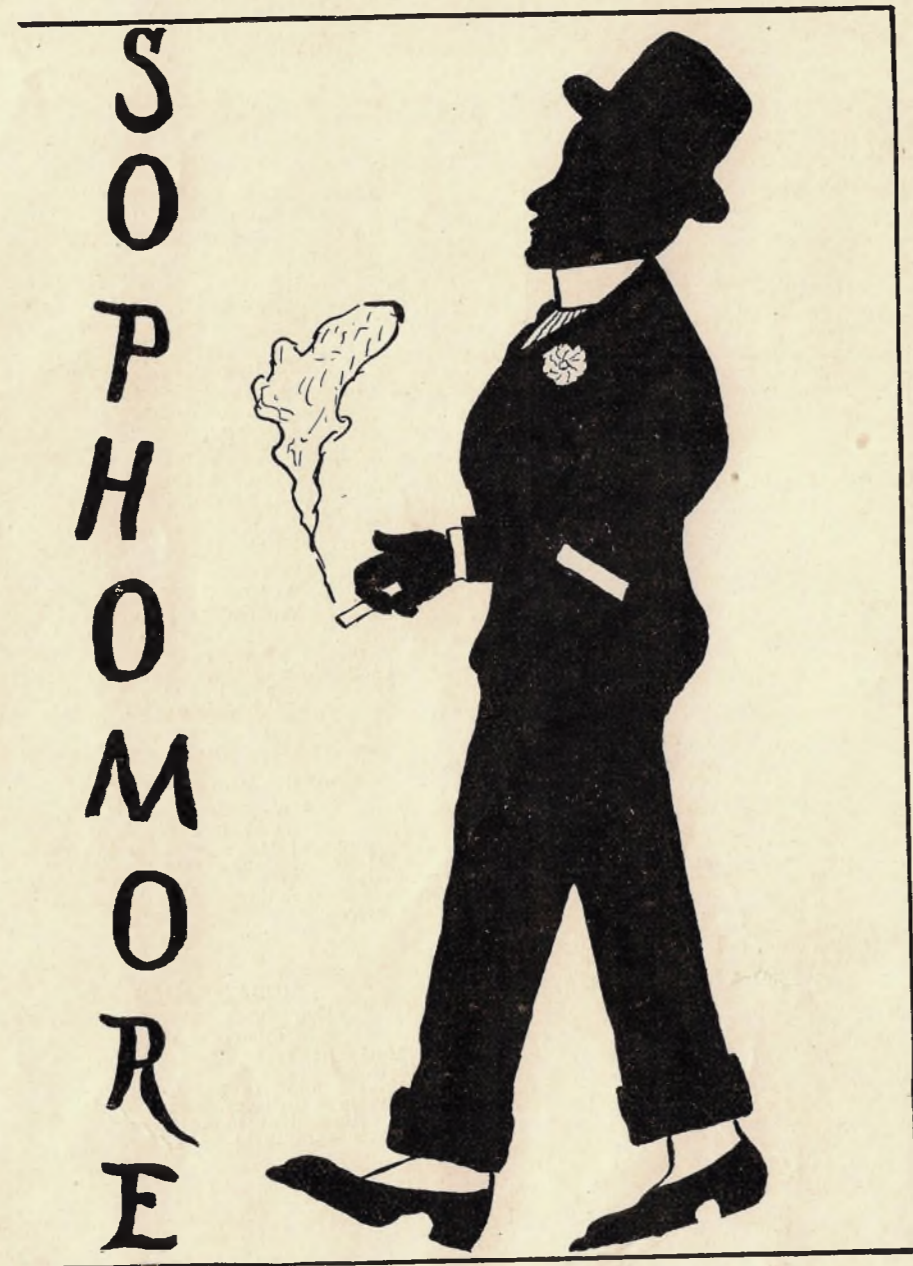
EUGENE L. HILLS, "PEAN"
 Physical Science, Social Science
 Cameron, Mo.
 Adelpian; Athletic Board; Men's Glee Club; "W" Association; Orchestra; Business Manager "Criterion"; "Owl" artist; semi-single.
 "And Ruth said whither thou goest, I will go."
 Nowhere so busy a man as he. Has time to eat only four meals a day.

ALICE OLINGER
 English, Education
 Unionville, Mo.
 Ruthean; Y. W. C. A.
 Zealous student, good-natured, always ready to perform her duty.
 She ditched her "Ford".

ROBERT PARSHALL, "BOB"
 Philosophy, English
 Cameron, Mo.
 Adelpian; Men's Glee Club; Quartet; Y. M. C. A. Cabinet; "W" Association; married.
 A jolly good fellow on the high road to success.

REBA TOMLIN
 English, Social Science
 Cameron, Mo.
 Ruthean; Y. W. C. A. Cabinet; semi-single.
 "Never mind to be on time."
 She is a believer in the square deal.
 She is content to be "Good",
 Never expects to be better.





Sophomore History

This history concerns the following: Gladys Ayers, H. J. Bane, Sadie Bryan, Chas. N. Burrows, Faye Cheesman, Ailie Cleveland, Marjorie B. Corn, Rolf Douglas, Hattie Gardner, Kathryn Gardner, E. N. Garrett, Carl Gross, Glenn Hatfield, Richmond Hawn, Verle Hendrixson, Vera Horn, Maude Lane, Alyce Leeper, Forrest Moore and L. Earl Snyder.

We retained fifteen of our freshmen, while two of our members have left us to seek greater heights—Alice Olinger and Vincent Ellwood were called to enter the ranks of the Juniors. One is still with the freshmen and the other of the thirty-seven freshmen are scattered elsewhere in different schools and our ranks have been recruited by five brilliant members, mostly from other schools, which leaves us twenty of the biggest, best and most beautiful students of Missouri Wesleyan College.

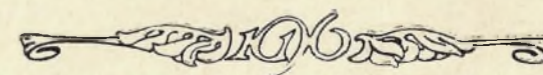
Forward! March! is the command for the Sophomore Class. We never look back. We keep our eyes fixed upon the goal of intellectual and moral achievements. In these we have only the very best in our minds and we shall never quit until the very best has been attained. We do not belong to the conservative class, but shall break through the ranks of the stand-patters and join the ranks of the progressives and shall plant the banner of scholastic attainment in 1918 the highest it has ever been placed.

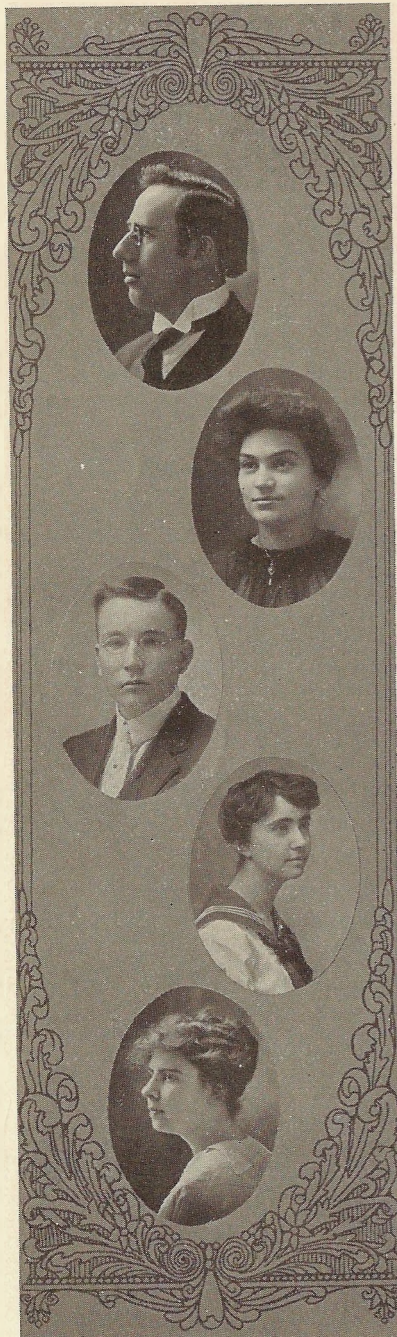
The talents of the class are almost too numerous to mention. Among our members, however, we have five ministers, three student volunteers, some are very efficient in the domestic science department and some are already graduates from the conservatory of music, some are teachers and some are preparing for a private tutorship.

It would not take much space to make mention of the freshies, but we do not consider it worth our while to spend our time in so doing.

There now, "little freshie", don't you cry
You'll be "a Sophomore" by and by.
And thereby gain a great deal of knowledge.
Good bye little laddies and lassies, we must go.

S. B. & E. S., '18.





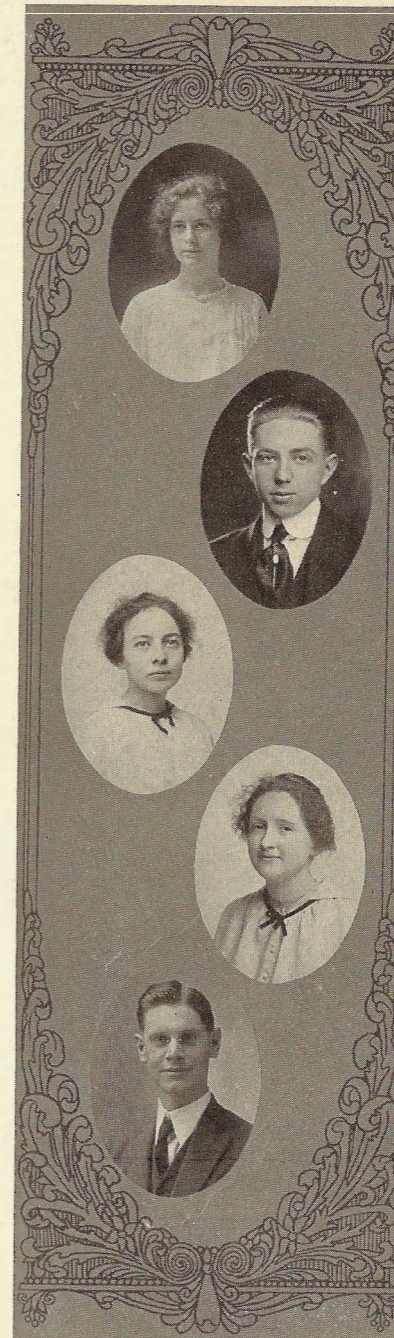
H. J. BANE
Bible, Ancient Language
Cameron, Mo.
Preacher; Adelpian; Y. M. C. A.;
married.
A little flunking now and then,
Happens to the best of men.

SADIE L. BRYAN
Brymer, Mo.
Aesthesian; Y. W. C. A. Cabinet.
"Ringleader of mischief in Dorm."

CHAS. N. BURROWS
Physical Science, Social Science
Kidder, Mo.
Adelpian; Football Team; Y. M. C.
A. Cabinet.
A quiet gentleman and a friend to
everyone.

FAY CHEESMAN
Rockport, Mo.
Ruthean; Y. W. C. A. Cabinet; Ladies
Glee Club; Assistant in German; semi-
single.
"I am a member of the faculty and
don't care who knows it."

AILIE CLEVELAND
History, English
Cameron, Mo.
Ruthean; semi-single.
Often seen with a "Guy".



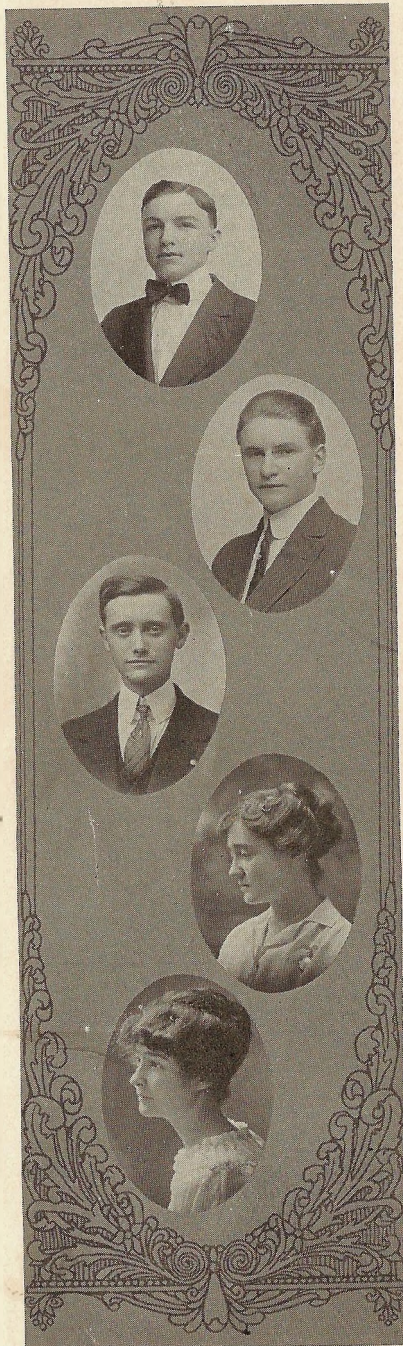
MARJORIE CORN
English Education
Cameron, Mo.
Ruthean, Orchestra; semi-single.
She tried to take Household Chemis-
try, because Prof. Daugherty said,
"Every one became engaged who took
it."

ROLF DOUGLAS
Biology, English
Cameron, Mo.
Adelpian; Men's Glee Club; Quar-
tet; Criterion Staff; semi-single.
So gentle and so kind, sure you will
never find a better friend than this old
boy.

HATTIE GARDNER
Grant City, Mo.
Aesthesian; Y. W. C. A.
"Just a minute, where is my ham-
mer?"

KATHRYN GARDNER
Grant City, Mo.
Aesthesian; Y. W. C. A.
"Smile at me once, and then adieu."

E. N. GARRETT
History, English
Cameron, Mo.
Preacher; Adelpian; Y. M. C. A.;
I. P. A.; Men's Glee Club; married.
"Has plenty to say, be it wise or
otherwise."



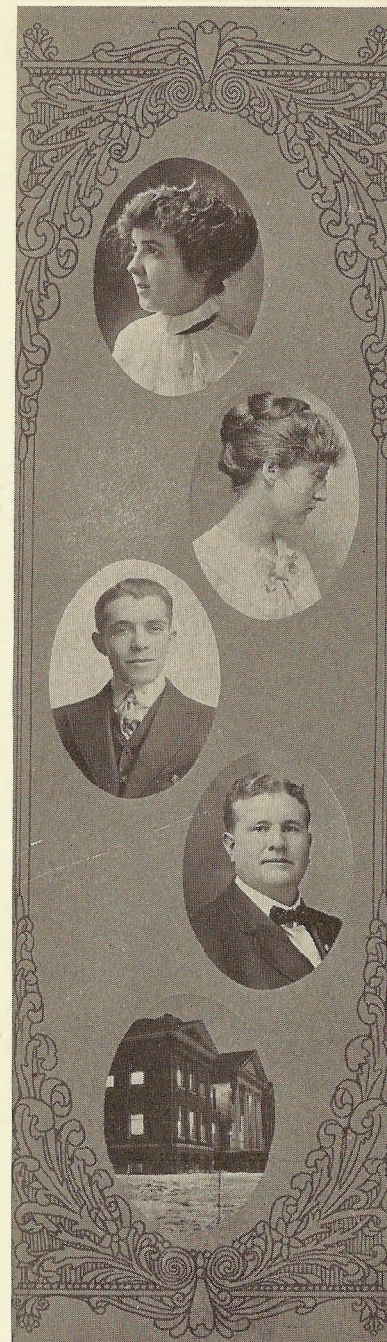
CARL GROSS
Physical Science, Modern Language
Cameron, Mo.
Adelphian.
His legs are just long enough to reach the ground.

GLENN HATFIELD
Social Science, Mathematics
Spickard, Mo.
Excelsior; Y. M. C. A. Cabinet; I. P. A.; Football team.
He is a live wire in religious and student activities.

RICHMOND HAWN
Mathematics, English
Osborn, Mo.
Excelsior; Baseball.
He keeps his peace and listens to what other men have to say.

VERLE HENDRIXSON
Ancient Language, Bible
St. Joseph, Mo.
Y. W. C. A.; semi-single.
She was born a talker and has fair lived up to it.

VERA HORN
English, Education
Cameron, Mo.
Aesthesian; Y. W. C. A. Cabinet; Basketball (Capt.) Athletic Board; Assistant in German; semi-single.
She couldn't catch a "Lamb" because he wasn't "Keene".



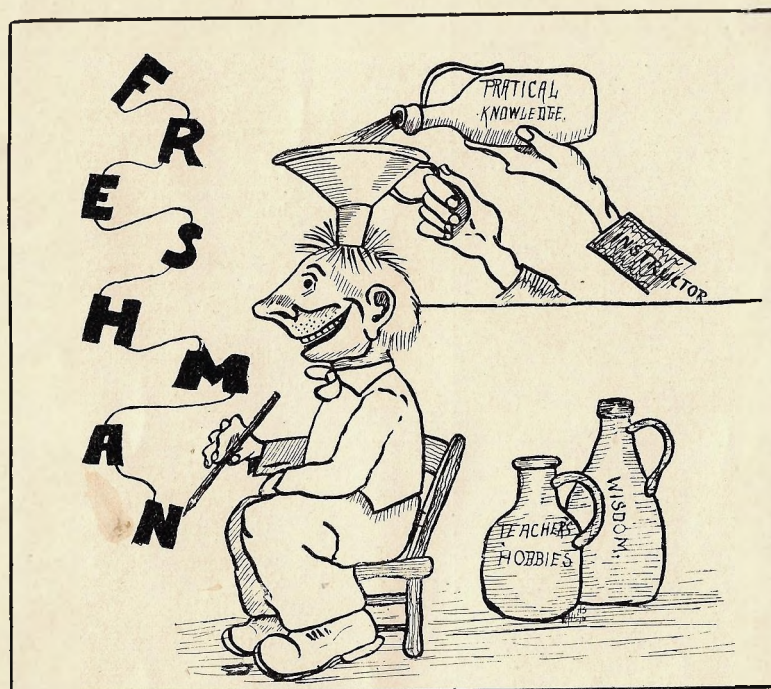
MAUDE LANE
English, Education
Cameron, Mo.
Ruthean. (Pres.); Basketball team.
Beatty has control of the "Lane".

ALYCE LEEPER
History, Modern Language
Altamont, Mo.
Aesthesian; Y. W. C. A.
"A mighty hunter," (always at it) and her prey is man."

FORREST MOORE
Biological Science, Social Science
Cameron, Mo.
Adelphian; semi-single.
A serious, high minded student with a future.

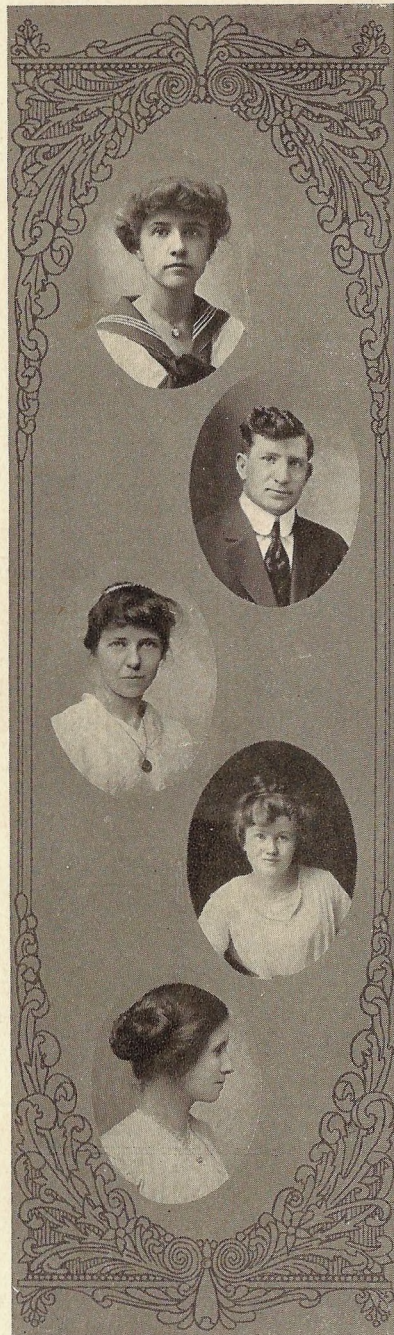
L. EARL SNYDER
Philosophy, English
Cameron, Mo.
Preacher; Adelphian (Pres.); Mens Glee Club; married.
An honest man, close buttoned to the chin,
Broad cloth without and big heart within.





Freshman History

In September, 1916, a most intellectual group of freshmen entered the halls of Missouri Wesleyan College. Everyone, even dignified seniors and faculty, looked with awe upon these giants of knowledge. These freshmen were represented in the various departments,—music, expression, home economics, etc. There were also scientific farmers, silver-tongued orators and dignified professors in this class. Nor did the minds of these illustrious freshmen dwell continually with their books. They took part in all the various school activities. The class was well represented on the football and baseball teams, and the entire basketball team were freshmen. There are also a few campestry students included. The world will indeed be a better place because these people have lived.



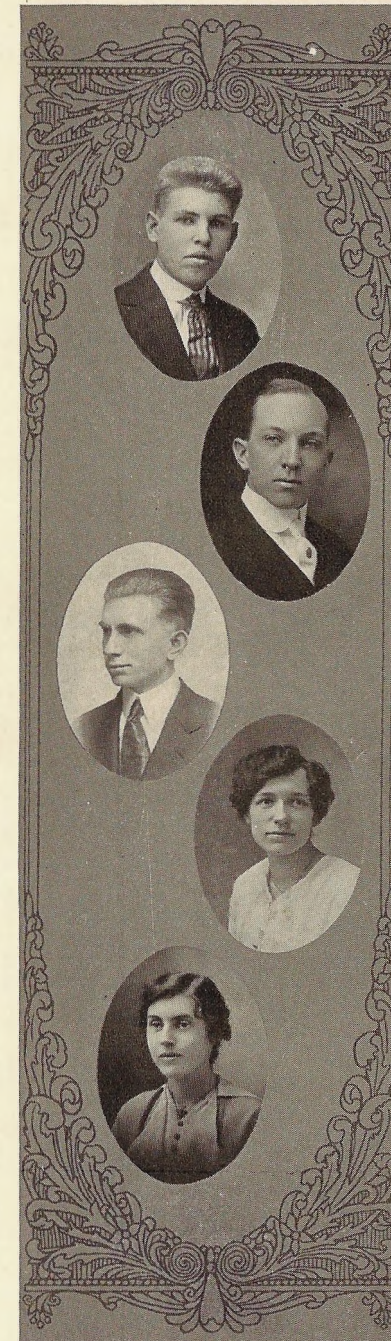
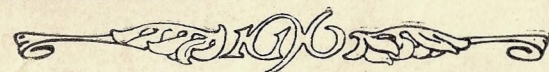
EVELYN BECKETT
St. Joseph, Mo.
Ruthean.
Welcomes many pilgrims at her shrine.

CLAY BIGLER, "Big"
Amsterdam, Mo.
Excelsior.
Believes in boosting the other fellow.
Works hard and will fill a man's place.

GLADYS BAKER
Breckenridge, Mo.
If silence were golden,
She would be a millionaire.

BESSIE BURGESS
Cameron, Mo.
Aesthesian.
How doth the blushing little maid
Employ each shining hour.

RUTH CLAYTON
Cameron, Mo.
Ruthean.
Admires landscapes, particularly "Hills".



FRED ENGLEMAN, "Dutch"
Cameron, Mo.
Excelsior.
Dutch is a "42 centimeter" when it comes to slinging the lingo.

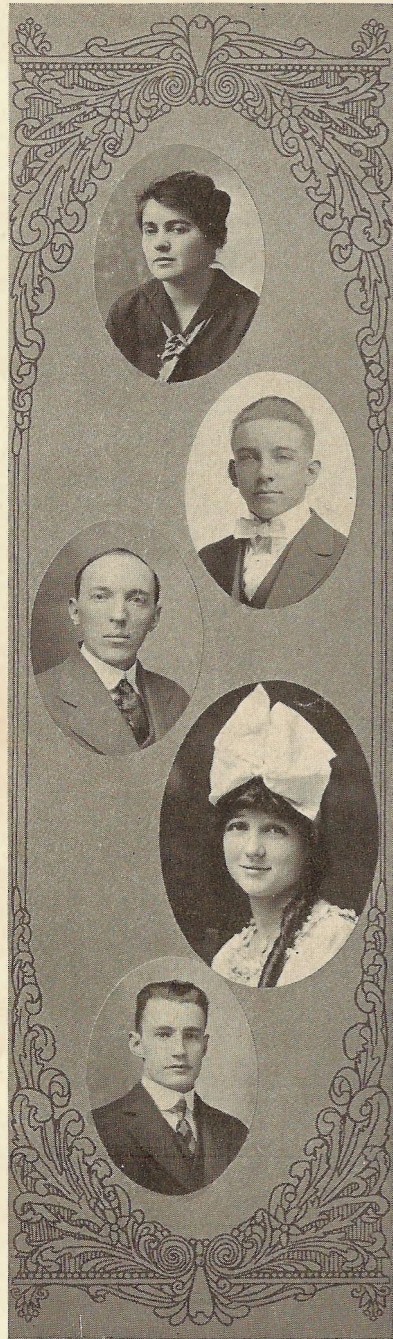
JOHN T. FARMER
Cameron, Mo.
Excelsior.
Talks slowly so he can think before he speaks.

E. L. HARTER
Linneus, Mo.
How Long, Oh Lord, How Long!

MRS. NELSON P. HORN
Cameron, Mo.
Aesthesian; Y. W. C. A. President.
"Happy am I, from care I am free,
Why aren't they all contented like me?"

ELSIE JEFFERS
Cameron, Mo.
Aesthesian.
Good without effort,
Great without a foe.





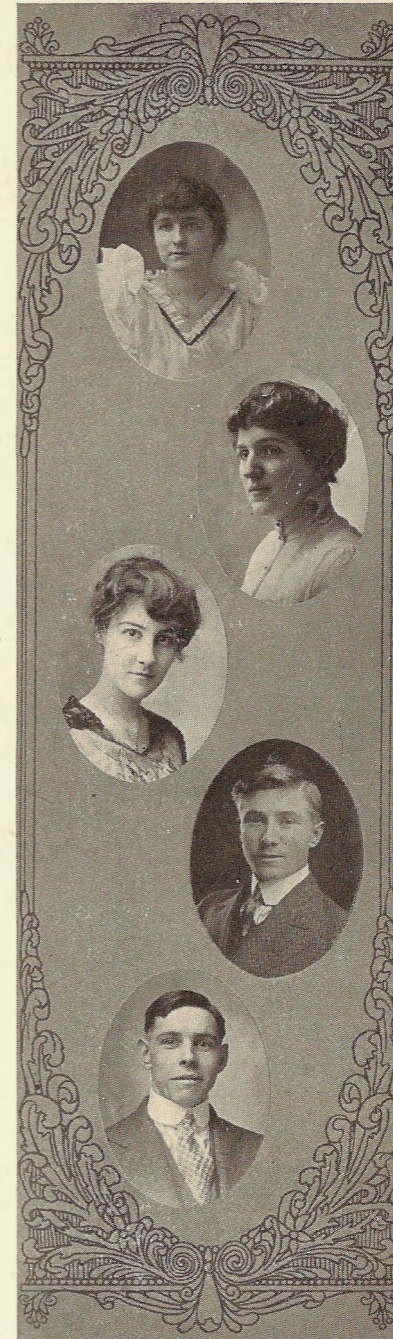
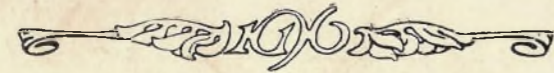
CLEO JOHNSON
Cameron, Mo.
Ruthean.
Willing to stand up with the Faculty.

FRANK LAWRENCE, "SHORTY"
Cameron, Mo.
Adelphian.
First mate of the good ship "Lucas."

FRED MOSLEY
Boaz, Alabama
Excelsior.
Our only student from the Sunny South.

ELSIE LUCAS
Cameron, Mo.
He may be small,
He may be any, any size at all.

ROY KEENE, "SPEC"
Salem, Oregon
Adelphian.
Has fallen to music, having lately become fascinated by a "Horn."



JEANNETTE MCGILL
Cameron, Mo.
Ruthean.
Which shall it be, which shall it be,
Which shall I choose among the three?

AVANELLE MURPHY
Princeton, Mo.
Aesthesian.
O, my beau is so nice.

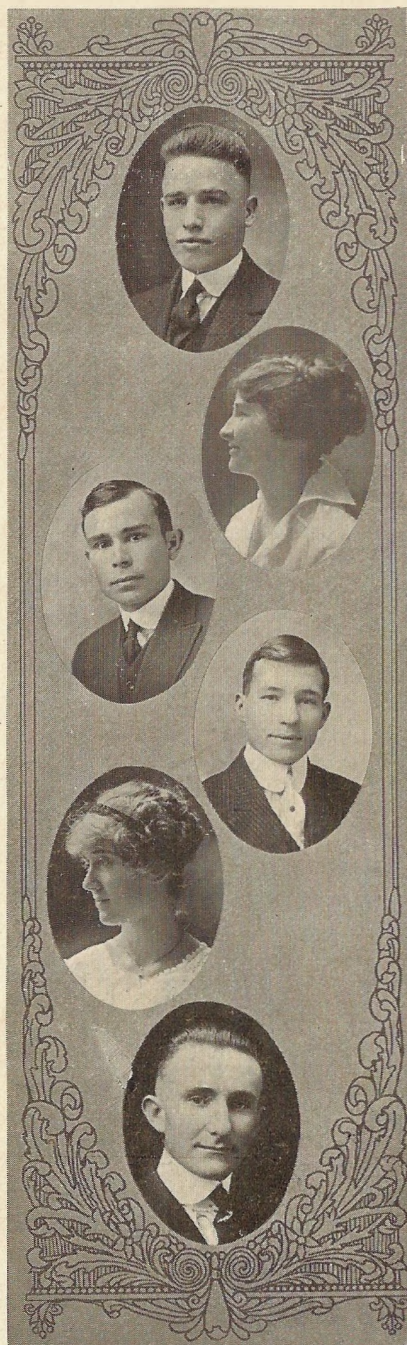
LUCILE PARTIN
Cameron, Mo.
Ruthean.
We love her still.
The stiller, the better.

RALPH PICKETT
Mercer, Mo.
Excelsior.
Some one take care of this kid.
He seems a cherub who has lost his way
And wandered hither.

WEBSTER RIDDLE
Cowgill, Mo.
Excelsior.
Well lives up to his name.



Wesleyan



WM. REINHART
Salem, Ore.

Adelphian.
He is a great favorite with all students.

BESSIE ROGERS
Cameron, Mo.

Ruthean.
Her music sways the multitude.

EDGAR SCHONK
Cameron, Mo.

Adelphian.
My home is in heaven,
I'm here on a visit.

JOSEPH THOMPSON
Memphis, Mo.

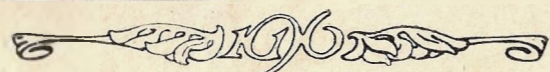
Excelsior.
The deed I intend is great,
But what as yet I know not.

FLORENCE UMSTOTT
Cameron, Mo.

Ruthean.
In all discussions between North and South she always takes the part of the "Yankee".

MAURICE WOODEN, "SLICK"
Winston, Mo.

Adelphian.
The Opie Reid of M. W. C.



BOOK

2

Academy and Special
Departments





Faint, illegible text within the stamp area.

Wesleyan

PREPS

Wesleyan



Senior Academy

ANNA BUCK
EVERETT BUTLER
EUGENE DeBRA
BESSIE EDIE
IVA ENTRIKIN
RUTH ENTRIKIN
KATHERINE FARWELL
EDITH GIBSON

DORSEY GRIFFY
DORA V. JENKINS
ELMER JOHNSON
K. W. KIM
ROWENA ROGERS
WYLIE SHEWEY
WILSON THOMAS
HUGH M. TRITT



Junior Academy

HARRY BEEBE
RUSSELL DAVIS
W. S. DAVIS
O. G. EDSON
HAROLD FARMER
WALTER FRANCISCO
CLIFFORD HELZER
EVERETT JONES

PAUL JONES
BESS KUHNES
IRVING LOCKHART
VIOLA McCLINTON
KATHLEEN McCOMAS
HELEN SHEPHERD
ESMA SOMERVILLE
RUTH STRASSER

MACK WARREN



Sophomore Academy

HELEN BOTHWELL
ARTHUR BULL
MABEL BURNS
EARL ECKELBERRY
MARTIN B. FORD
BESSIE GASKELL
CARL GOOD
RALPH HARPER
PAUL HOPKINS
LETA HULING

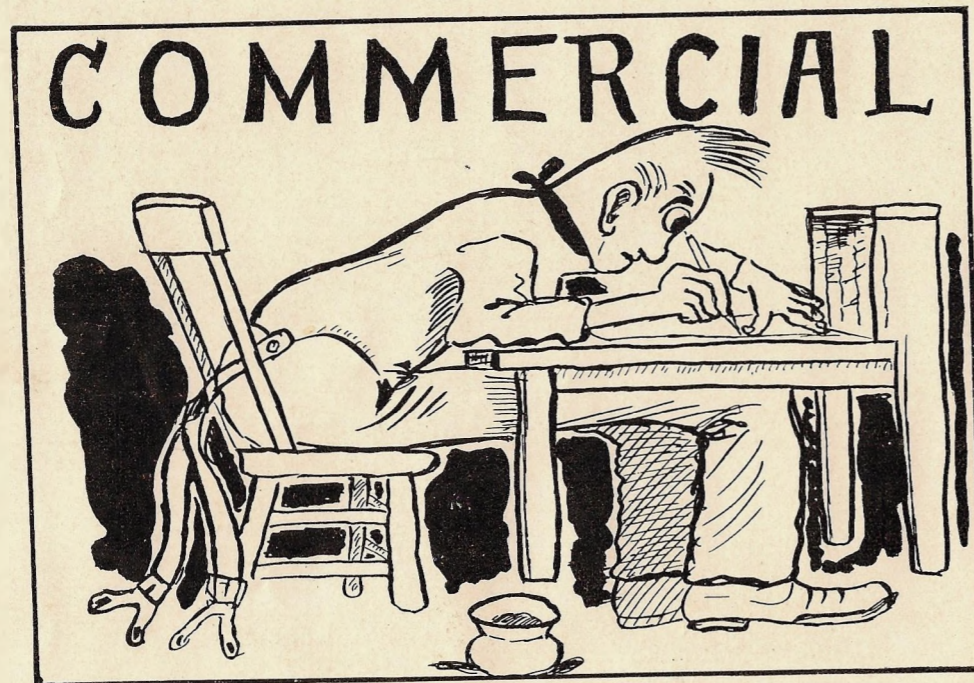
PATRICK KINSELLA
BLANCHE LOVELL
A. W. MONGER
BESSIE PAUSTIAN
MARY SIMMON
ALDO SNYDER
EARL THOMAS
RUTH WADDILL
NELLIE WIGGER
ALMA WILSON



Freshman Academy

METTA CRUICKSHANK
MEEDA DANIEL
CLACY DENNIS
IRENE DENNIS
W. L. DICKINSON
EMMA EDSON
ROSCOE FOSTER
MRS. ROSE FREIDMAN
EARL GOOD
ADAMAE GRAY
LAURA GRUNDY
FRED HALL
LYNN HENDERSON
J. S. HOLCOMB
BESSIE HUNTER

FAYE JOHNSON
ALTA LOUGHEAD
LILLIE LOUGHEAD
DAVID METZ
MORRIS MOORMAN
MABEL RADCLIFF
MABEL REARDON
CARTER ROSS
OVID SACKMAN
ARTHUR STONE
HARRY THOMAS
ALFRED THOMPSON
RHENA TOMLIN
LAWRENCE WHEELER
ADA WILLIAMSON



Commercials

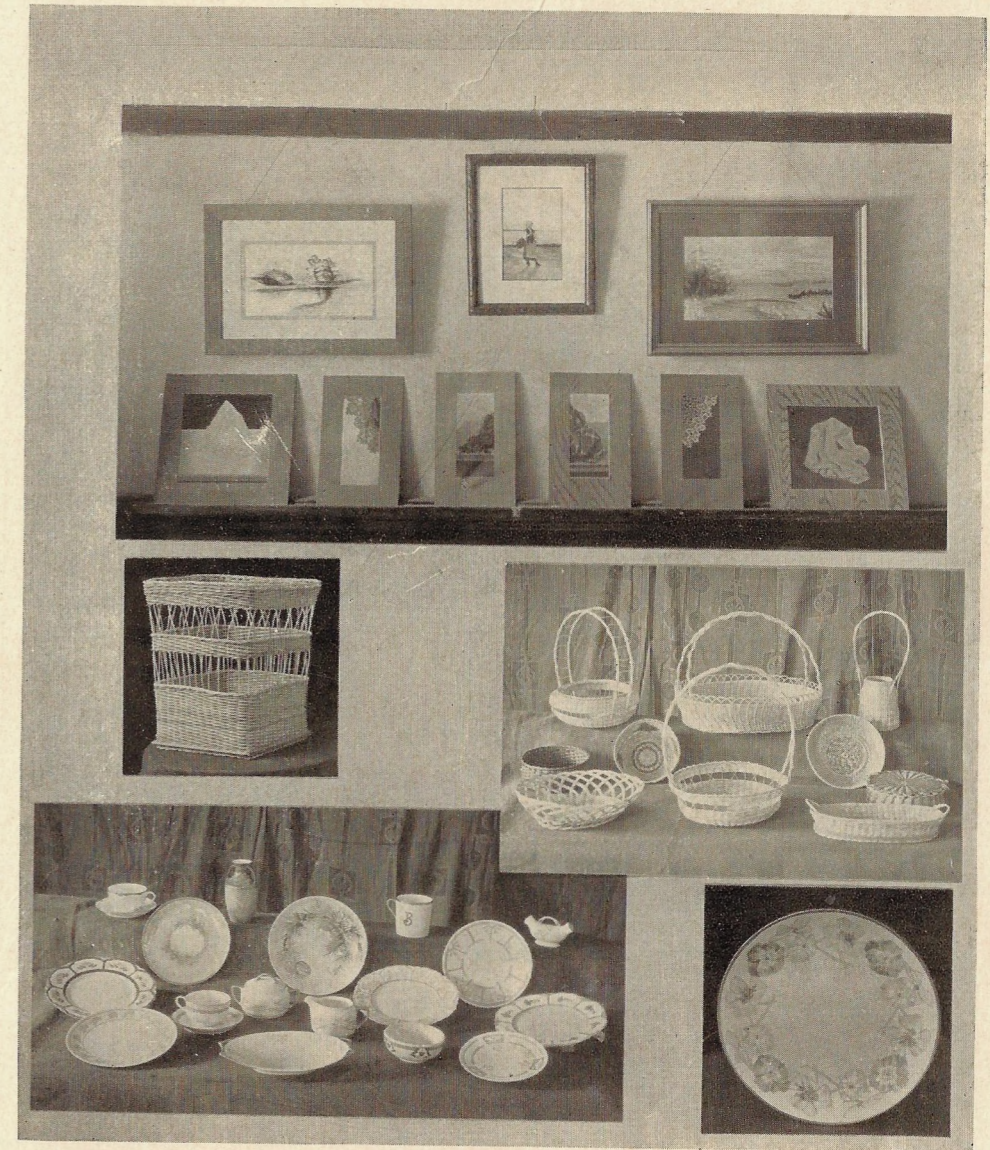
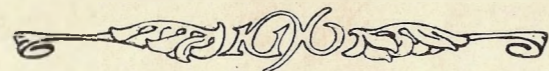
WORTH B. ALLEY
LYMAN BASSETT
LUCY DEITER
RUTH DIVEN
ROBERT GRANTHAM
ROY GRANTHAM
W. F. GROSS
HARRY GROVES
ESTHER HOWSER
LURA HOWSER
BRYAN HUDGINS
LEWIS HURD
FRANK KINDIG
MILTON C. KNIGHT
MRS. ALICE JONES
MARY E. KLEPPER
FRANCES KLEPPER
HORACE McCOMB
ETHEL McCOOL
DONALD McFARLAND

FRED McKEE
JOSEPH MOORE
THOMAS MOORE
DOT MUDGETT
RAYMOND RICHARDSON
OLIN ROBINS
GUY ROGERS
ARTHUR SEEGER
I. D. SEYMOUR
MELVERN SEYMOUR
NORMAN SEYMOUR
PAUL SHOOL
BYRL SLOAN
LLOYD STUCKER
MAURICE THOMPSON
M. M. THOMPSON
GEORGE W. WIGGINS
CARL WILLIAMS
GARL WOODS
HELEN WRIGHT



Art Students

- MRS. A. J. ALTHOUSE
- MISS MYRA BAKER
- MISS EVELYN BECKETT
- MISS BERNICE BOTSFORD
- MISS BEATRICE BOWMAN
- MISS BLANCHE BROWN
- MRS. A. S. BROWN
- MISS FAY CHEESMAN
- MRS. ROY CHIVENS
- MISS MARGUERITE CORNISH
- MISS ELIZABETH COTTEY
- MISS KATHRYN GARDNER
- MISS ZULIAH GREEN
- MISS IDA HEINZ
- MISS LURA HOWSER
- MISS AVANELLE MURPHY
- MRS. J. A. RATHBUN
- MRS. FILMORE REED
- MISS LOUIS RISING
- MISS RUTH RISING
- MRS. H. A. SCHOEPPPEL
- MISS CLAUDIA STONE
- MISS RUTH WADDILL



WORK OF ART DEPARTMENT



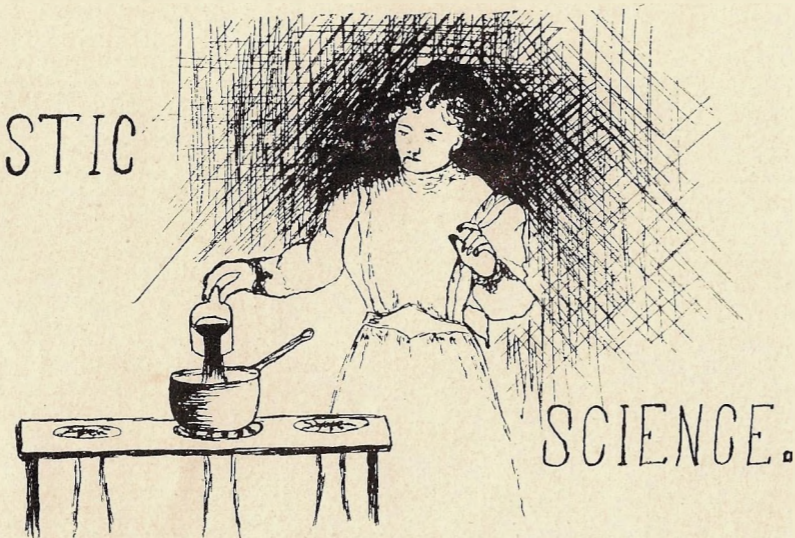
EXPRESSION.



The School of Expression

- | | |
|-------------------|-----------------|
| CHAS. N. BURROWS | THOMAS McKEE |
| METTA CRUICKSHANK | AVANELLE MURPHY |
| MEEDA DANIELS | PAUL SHOOL |
| BRYAN HUDGINS | ETHEL STEWART |
| KATHLEEN McCOMAS | WINIFRED WITT |
| | HELEN WRIGHT |

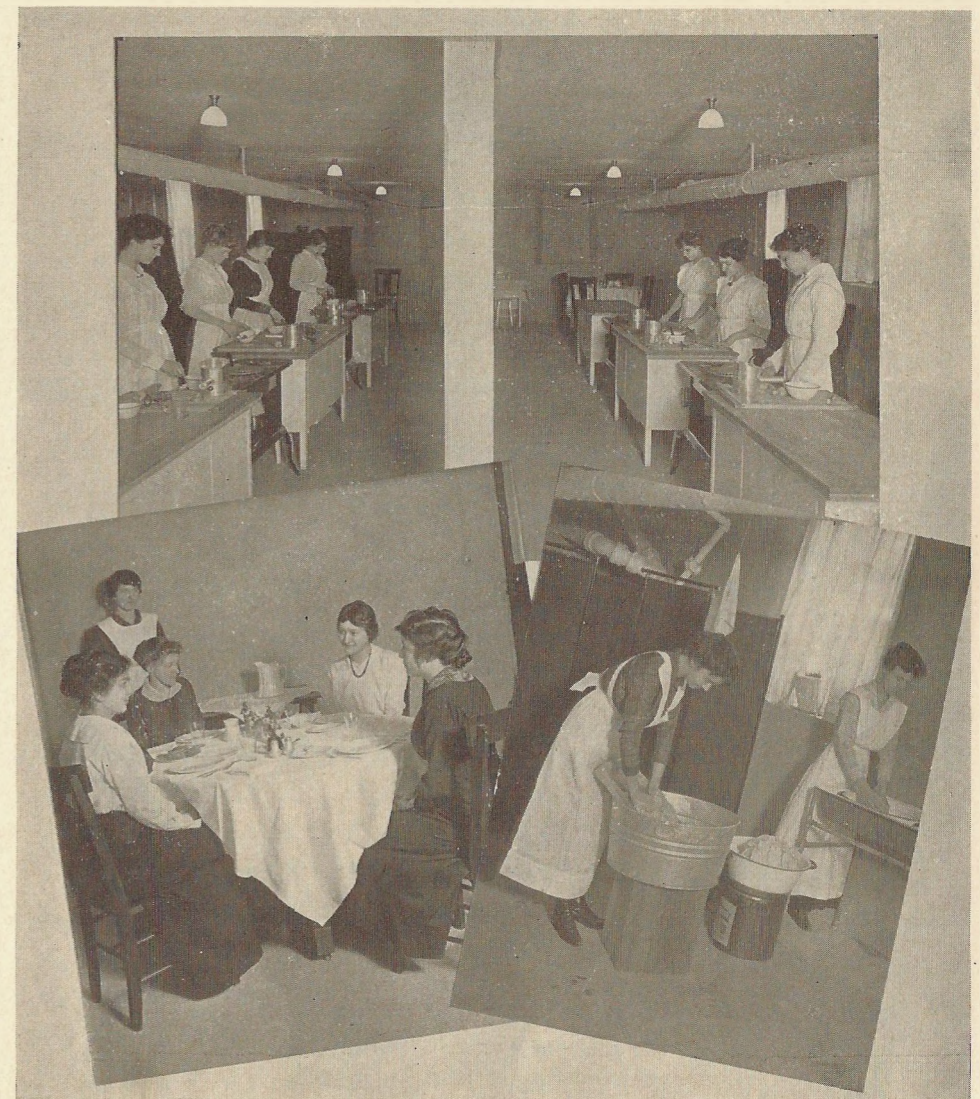
DOMESTIC



Domestic Science Students

LEORA BLANCH ELLWOOD,
Instructor

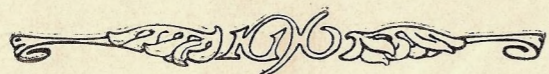
EVELYN BECKETT
FAYE CHEESMAN
BESS KUHNS
AVANELLE MURPHY
KATHLEEN McCOMAS
EDNA OESTERLE
RUTH STRASSER



DOMESTIC SCIENCE SCENES



MUSIC



ETHEL VOSS
Piano, Senior Voice, Senior
Cameron, Mo.

A talented girl who is willing to make the effort necessary for the development of her talents. A pleasing soloist, and a girl worthy to be called a friend.

"Fond of music, fond of singing,
Music, music everywhere.
Time's on moment pinions winging
Downy music all the year."





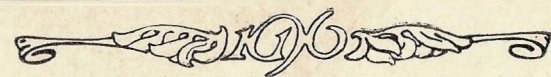
MARGUERITE CORNISH
Osborn, Mo.
Voice, Junior; Piano, Sophomore
Present in body, but not in spirit
Her future address,—No. 1, "Over-
street".

VERA HUGHES
Piano, Junior
St. Joseph, Mo.
Precious articles are always done up
in small packages

HELEN KELLEY
Piano, Junior
Plattsburg, Mo.
She is a quiet girl, but can make a
piano talk.

MRS. R. E. PARSHALL
Piano, Junior
Cameron, Mo.
Her presence lends its warmth and
health to all who come before it.

MARJORIE CORN
Piano, Sophomore
Cameron, Mo.
Oh heart, love is thy bane and thy
antidote.



EUGENE DeBRA
Piano, Sophomore; Voice, Unclassified
Cameron, Mo.
Reserved for the girls who want a
musical man.

RUBY DUNCAN
Piano, Sophomore; Voice, Unclassified
Lineville, Iowa
She has the charm of courtesy, and
the gracious words so sweet and other
virtues of the soul which make her so
complete.

MRS. BYRON HORN
Voice, Sophomore; Piano, Unclassified
Cameron, Mo.
She is young and happy and sings
like a lark, even if she is married.

OPAL MOORE
Piano, Junior
Hamilton, Mo.
The exuberance of youth conceals her
talents.
What would the orchestra do without
her?

ELSIE SWAN
Piano, Sophomore
Barnard, Mo.
Thine whose locks outshine the sun.





VANITA TRICE
Piano, Sophomore
Cameron, Mo.
She is making "Good".
"Nuff said".

LAURA WITT
Voice, Sophomore
Cameron, Mo.
Favorite expression, "G. Whittiker".

ADA WOOSLEY
Voice, Sophomore
Cameron, Mo.
If music be the voice of love, sing on.
Signed, "Aldo".

AUDRA CAWOOD
Piano, Unclassified; Voice, Unclassified;
Violin
Hale, Mo.
Little we know of her, only to compli-
ment her on her music.

RUTH CLAYTON
Piano, Unclassified
Cameron, Mo.
Her music doth enchant the "Hills".



KENNETH CRAWFORD
Piano, Unclassified
Cameron, Mo.
Fair haired, azure eyes, with a deli-
cate Saxon complexion.

EMMA EDSON
Piano, Unclassified; Voice, Unclassified
New Hampton, Mo.
Wants the English to win in the
present war.

ALICE G. ENGLEHART
Piano, Unclassified
Cameron, Mo.
A Sophomore in Cameron High School
who believes in improving every oppor-
tunity.

CARL GOOD
Voice, Unclassified
Linneus, Mo.
Extracts lacteal beverage secreted by
the bovine quadrupeds on M. W. C.
farm.

HARRY GROVES
Piano, Unclassified
Cameron, Mo.
A quiet type of good, active, earnest
boyhood.





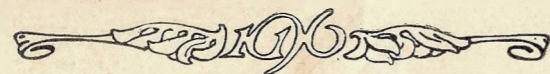
RUBY GROVES
Piano, Unclassified
Cameron, Mo.
A wee bonnie lass.

EUGENE HILLS
Voice, Unclassified
Cameron, Mo.
Good natured and jolly. Has the pa-
tience of Job.

GENEVIEVE JONES
Piano, Unclassified
Cameron, Mo.
"Heart on her lips and soul within her
eyes,
Soft as her clime and sunny as her
skies."

RETA RUTLEDGE
Piano, Unclassified
Cameron, Mo.
Quotes frequently from "Byron".

VALERA SMITH
Voice, Unclassified
Cameron, Mo.
"The joy of youth and health her eyes
displayed,
And ease of heart her every look con-
veyed."



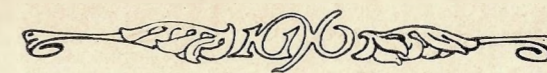
MRS. EARL SNYDER
Piano, Unclassified
Cameron, Mo.
She bane a jolly preacher's wife.

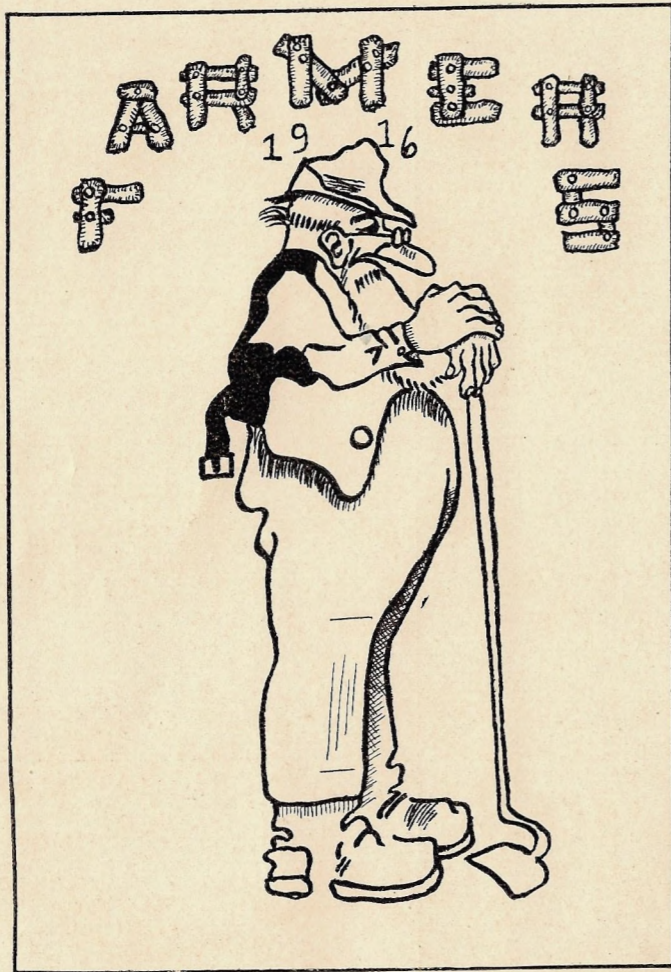
RUTH WADDILL
Voice, Unclassified
Carrollton, Mo.
Wants to do everything everybody
wants her to do.

FLORENCE UMSTOTT
Piano, Unclassified
Cameron, Mo.
How doth the busy little bee improve
each shining hour? Playing "Yankee"
Doodle on the piano.

WILSON THOMAS
Voice, Unclassified
Cameron, Mo.
"Oh women, why persecutest thou
me?"

MACK WARREN
Piano, Unclassified
Westboro, Mo.
A quiet man with a musical mind.





The College Farm

Courses in Agriculture and Domestic Science

It has long been the dream of the College to install certain practical courses such as Agriculture and Domestic Science.

The year 1915-16 has seen both of these courses installed in the College, and splendid equipment for the practical demonstration of the work has been furnished. The College is at present teaching one year of four courses in Agriculture, and has installed a two years' course in Domestic Science.

For the practical demonstration of the Agriculture work, the Board of Trustees has purchased one hundred and ninety acres of the finest land adjoining Cameron. Arrangements have been made for this farm to be a demonstration farm for the State Agricultural College, thus securing for us the counsel and help in scientific organization of the farm. The purpose of the University as well as of the College, is to operate this farm for profit,—demonstrating the practical application of scientific results obtained by the experimental work at the University.





The farm will be operated as a dairy farm, furnishing work for student boys, and affording the most highly practical method of operation possible. Through the counsel of the various departments of the University, the farm has been organized for the rotation of crops, the building up of the soil, the development of the dairy herd, the handling of all kinds of live stock, and proper equipment. This program extends as far ahead as 1921.

In time, the College will install a second year set of courses in Agriculture, working out these courses in harmony with the advanced courses at the State Agricultural College. The purpose of this whole movement is to put the College more and more into harmony with the Agricultural territory in which it is situated.

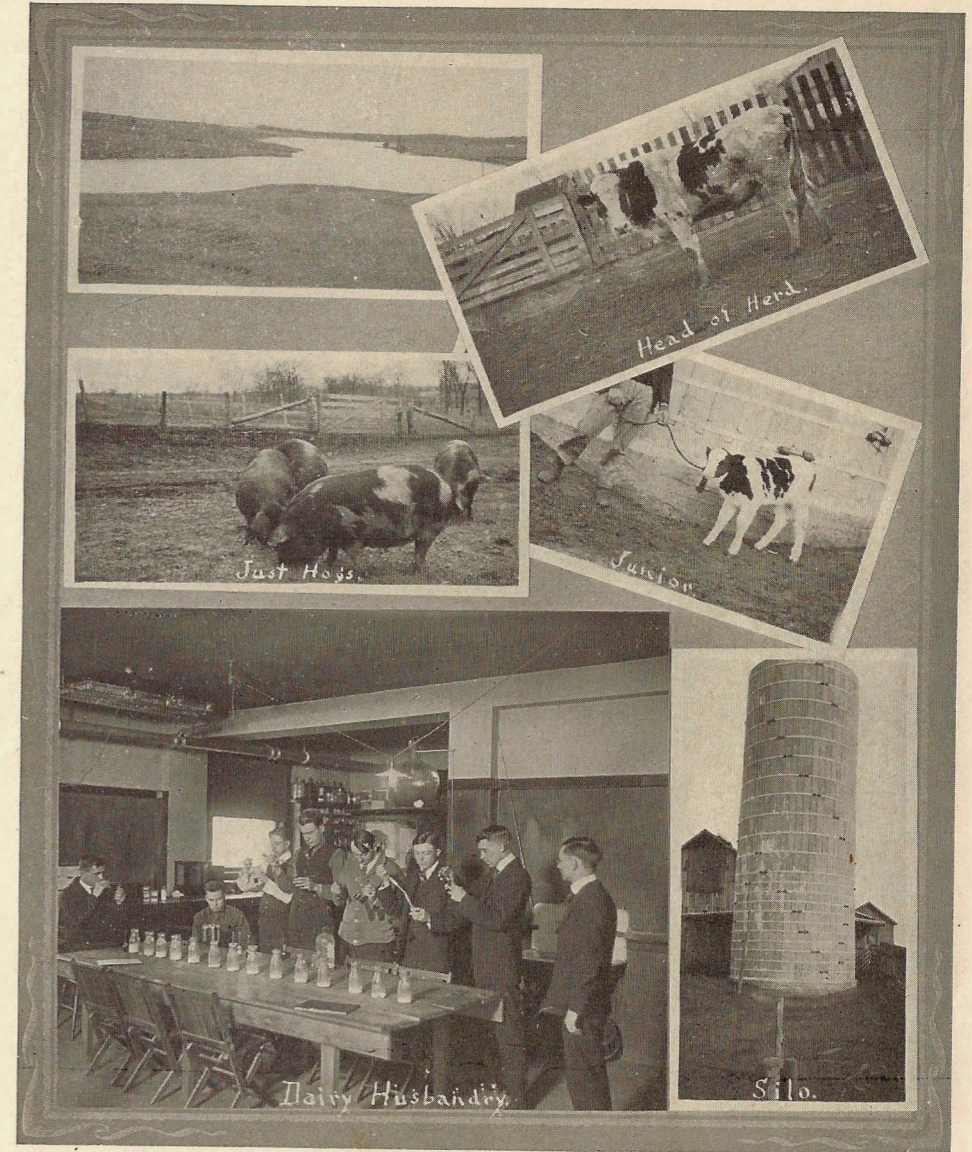
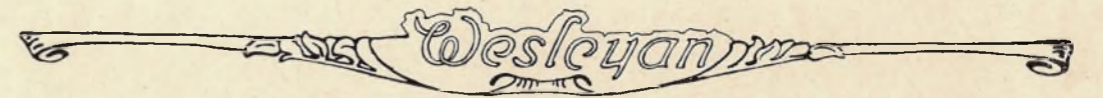
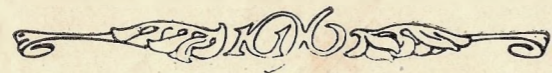
For the Domestic Science department, a beautiful room has been prepared and is now in use in the basement of the dormitory. Mrs. DeBra is responsible for the renovation of the building and for the equipment of this department. The total expense has been about \$1,500.



We have never seen any more comfortable or better equipped department for the teaching of this practical course than Missouri Wesleyan now has. The equipment is of white enamel and everything is as sanitary as it can well be made.

The two courses now offered consist of training in Domestic Science and Home Economics. Not only are the girls taught to cook but they are taught the scientific principles involved in proper cooking and in the maintenance of health. They are also taught plain and fancy sewing, pattern cutting, dress making, etc.

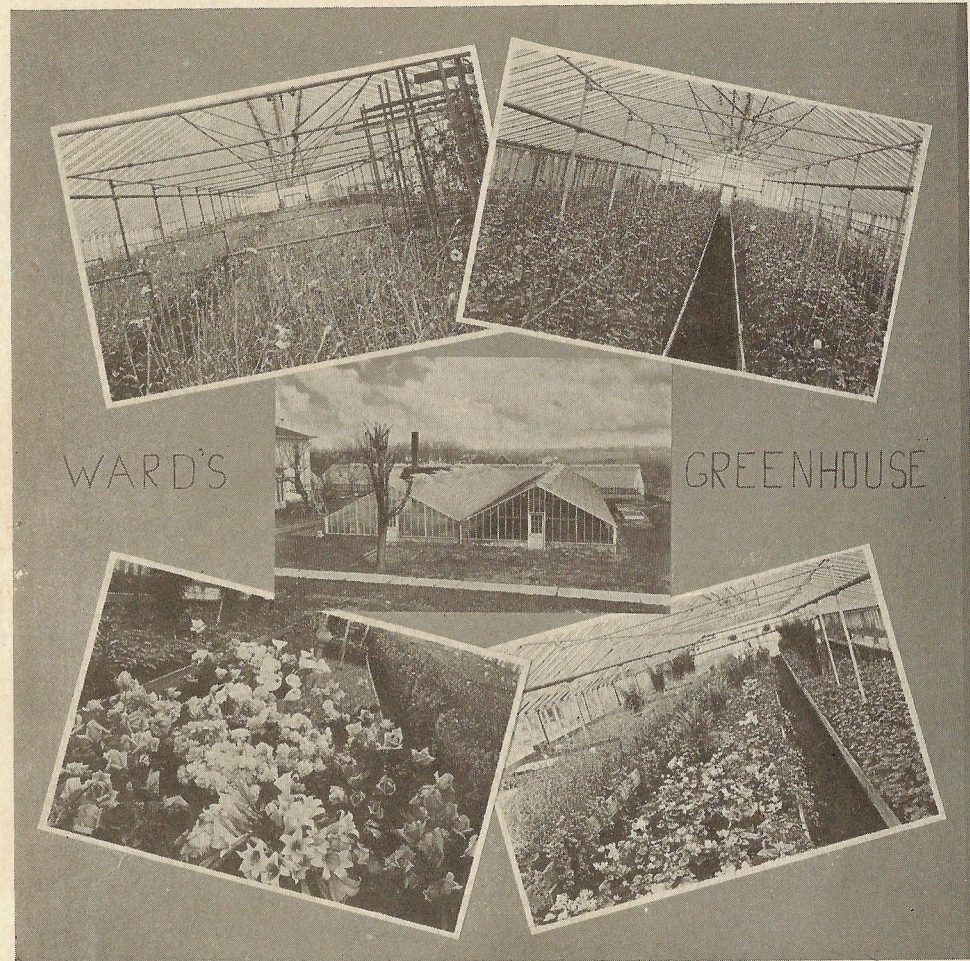
The girls of the College have shown great interest in this course and we expect it to be crowded another year.



SCENES ON M. W. C. FARM



Wesleyan



Wesleyan

BOOK
3
Organizations



BOOK
MEMORANDUM

Wesleyan

ORGANIZATIONS



Wesleyan



Ruthean Literary Society

Officers

MAUDE LANE	-	-	-	-	President
RUTH CLAYTON	-	-	-	-	Vice-President
EVELYN BECKETT	-	-	-	-	Secretary
FAY CHEESMAN	-	-	-	-	Treasurer
LAURA GRUNDY	-	-	-	-	Chaplain
AILIE CLEVELAND	}	-	-	-	Curators
ALYCE OLINGER		-	-	-	
GEORGIA SHEWEY		-	-	-	
HELEN SHEPHERD	-	-	-	-	Sergeant
VANITA TRICE	-	-	-	-	Pianist
MARGUERITE CORNISH	-	-	-	-	Chorister

Members

GLADYS AYRES
 AUDRA CAWOOD
 MARJORIE CORN
 ELIZABETH COTTEY
 RUTH ELLWOOD
 CLEO JOHNSON
 ETHEL McCOOL
 JEANETTE MCGILL
 KATHLEEN McCOMAS
 EDNA OESTERLE
 LUCILE PARTIN

BESSIE ROGERS
 ROWENA ROGERS
 GRETA SNIDER
 BESSIE STONER
 RUTH STRASSER
 REBA TOMLIN
 FLORENCE UMSTOTT
 RUTH WADDILL
 WINIFRED WITT
 LAURA WITT
 ADA WILLIAMSON
 HELEN WRIGHT



Ruthean Poem

Rutheans we, like our model of old
 Are gleaning in God's fields so wide;
 She followed the harvesters, so we are told,
 Storing all the saved grain at her side.

Unlike Ruth we're gleaning for knowledge and might,
 In the field of old Wesleyan's halls.
 Our Profs do we follow from morning till night
 Gleaning wisdom—till more duty calls.

The Ruthean girls have a lot of fun
 When they leave their books to play,
 They talk and laugh, and walk and run
 And are happy all the way.

Here's to the Rutheans then when they work,
 And here's to them when they play;
 But whatever they do they never shirk
 And are busy all the day.

Everyone come now before us to see
 Just how many we have in our ranks,
 There's musicians and artists and athletes free
 Who all take part in our pranks.

A chafing dish party we gave the new girls
 When they joined our society last fall.
 They ate of the goodies and chatted like squirrels
 And enjoyed themselves there one and all.

Not long ago our party we gave,
 Which was held at Pythian hall;
 We played and feasted till the hour was grave,
 Then answered the homecoming call.

So the Ruthean girls are in for the best
 As we gather each week for our meeting;
 If you'll come I'm sure we can stand the test
 And to all we send a greeting

E. A. B., '19





Adelphian Literary Society

Officers

EARL SNYDER	-	-	-	President
ALVA F. ENGLEHART	-	-	-	Vice-President
FRANK TOMLIN	-	-	-	Secretary
ROLFE DOUCLAS	-	-	-	Treasurer
CHAS. N. BURROWS	-	-	-	Attorney
DAVID METZ	-	-	-	Sergeant
E. N. GARRETT	-	-	-	Critic
E. L. HILLS	-	-	-	Chaplain
R. E. PARSHALL	-	-	-	Chorister
EUGENE DeBRA	-	-	-	Pianist
HARVEY BANE	-	-	-	
CARL GOOD	-	-	-	
WILSON THOMAS	-	-	-	Curators

Members

EARL ECKELBERRY	PROF. C. R. McGEE
ORLER EDSON	FRED McKEE
VINCENT ELLWOOD	THOMAS P. McKEE
EARL GOOD	ASHBY MONGER
CARL GROSS	FOREST MOORE
LYNN HENDERSON	FOSTER POLAND
BYRON HORN	WM. REINHART
NELSON P. HORN	OVID SACKMAN
ROY KEENE	EDGAR SCHONK
FRANK KINDIG	WYLIE SHEWEY
PAUL JONES	ALDO SNYDER
FRANK LAUGHLIN	HUGH M. TRITT
FRANK LAWRENCE	MAURICE WOODEN
DONALD McFARLAND	GEORGE WIGGINS



Adelphian

In oratory and debate
Adelphians are found.
And, too, in Wesleyan's music halls
They make a joyful sound.

On diamond or on gridiron, or
In class rooms, or in work
You'll always find Adelphians
And you'll find they never shirk

With vim and "pep" they're always there
In all the manly sports;
And shouts of rooters fill the air
When some team's play they thwart.

Their purpose is to raise themselves
And all their friends so true,
Not to a place of gaudy wealth,
But of those who dare and do.

They always help the under man;
They try to be a friend
To those who struggle 'neath their load—
They help them till the end.

Adelphians aim to do their best,
They are a chosen few;
They withstand every rigid test
In halls of learning too.

They're mighty men in word or pen;
They're always in the fight;
Their works and deeds proclaim the men—
They stand up for the right.

Out in the many walks of life
Each man will take his place;
Each calmly works amid the strife,
And shows a manly face.

A jolly bunch of fellows, they,
So full of mirth and song;
Men think of them when far away,
And think 'twill not be long.

Till they, like them, will far have roamed
O'er plains,—perhaps o'er sea;
For if a man's an Adelphian
The world will brighter be.

W. T. '20.





Aesthesian Literary Society

Officers

MAY HATFIELD	-	-	-	-	President
VERA HUGHES	-	-	-	-	Vice-President
DORA JENKINS	-	-	-	-	Secretary
RUTH ENTRIKIN	-	-	-	-	Treasurer
ELSIE JEFFERS	-	-	-	-	Literary Critic
EMMA EDSON	-	-	-	-	Music Critic
BESSIE GASKELL	-	-	-	-	Sergeant at Arms
MABEL RADCLIFF	-	-	-	-	Pianist
ESMA SOMERVILLE	-	-	-	-	Chorister
BESSIE BURGESS	-	-	-	-	Editor
KATE FARWELL	-	-	-	-	Chaplain

Members

- | | |
|--------------------|---------------------|
| ANNA BUCK | ADA GRAY |
| SADIE BRYAN | MRS. NELSON HORN |
| MEEDA DANIELS | VERA HORN |
| IRENE DENNIS | ESTHER HOWSER |
| LUCY DEITER | LAURA HOWSER |
| RUBY DUNCAN | LETA HULING |
| MRS. ROSE FREIDMAN | BLANCHE LOVELL |
| HATTIE GARDNER | OPAL MOORE |
| KATHRYN GARDNER | VIOLA McCLINTON |
| | AVANELLE MURPHY |
| | MRS. R. E. PARSHALL |
| | BESSIE PAUSTAIN |
| | CLAUDIA STONE |
| | ELSIE SWAN |
| | RHENA TOMLIN |
| | ETHEL VOSS |
| | ALMA WILSON |



The Aesthesians

Oh here's to the Aesthesians of M. W. C.!
 True worth doth distinguish their band,
 For twenty-nine years they've continued to grow;
 Now they're scattered all over the land.

The Aesthesians are proud of their motto so true,
 And, though many vict'ries they've won,
 They are never content with achievements attained,
 For when growth ends decay has begun.

The society colors are purple and gold;
 The flowers are fitting I'm sure;
 The aster so purple, the golden rod too,
 Are symbols of the royal and pure.

The Aesthesians functions that comes once a year,
 On the birthday of Washington great,
 Is a time of much jollity for everyone
 Who's invited to then celebrate.

At the close of each school year in M. W. C.
 The Society gives a Lawn Fete;
 A feature of this is the annual play
 And a jolly good time till quite late.

The Aesthesians are proud of Elizabeth Wells,
 Who in India works for her King.
 There are more of the band who are now volunteers,
 In the future their labors we'll sing.

Among the faculty members of M. W. C.
 The Aesthesians are prominent, too,—
 Misses Dodd, Wilson, Smith, also Mrs. McKee,
 To their work they are always found true.

Other former Aesthesians all over our land
 Are women with great noble minds,
 There are teachers, musicians, and homemakers true
 And workers of various kinds.

Then here's to the Aesthesians, so loyal and true,
 The Aesthesians with standard so high!
 Long live the Aesthesians! May all things they do
 Be so noble they never will die.

—M. H. '17





Excelsior Literary Society

Officers

CLAIR EBERHART	-	-	-	President
RICHMOND HAWN	-	-	-	Vice-President
MARTIN B. FORD	-	-	-	Sec. and Cor. Sec.
RALPH PICKETT	-	-	-	Treasurer
R. F. MOSLEY	-	-	-	Critic
GLENN HATFIELD	-	-	-	Sergeant
EARL THOMAS	-	-	-	Attorney
JOSEPH THOMPSON	-	-	-	Chaplain
HARRY THOMAS	-	-	-	Chorister
MACK WARREN	-	-	-	Pianist
CLAY BIGLER	-	-	-	Curators
HARRY LOCKHART	-	-	-	

Members

WORTH ALLEY	CLIFFORD W. HELZER
LYMAN BASSETT	J. S. HOLCOMB
ARTHUR C. BULL	BRYAN HUDGINS
EVERETT BUTLER	FRED HALL
MERLIN COOPER	K. W. KIM
RUSSELL DAVIS	IRVING LOCKHART
W. L. DICKINSON	W. A. POLLOCK
FRED H. ENGLEMAN	WEBSTER RIDDLE
JOHN T. FARMER	CARTER ROSS
HAROLD FARMER	ARTHUR STONE
ROSCOE FOSTER	J. W. THOMPSON
ROY GRANTHAM	MORRIS THOMPSON
ROBERT GRANTHAM	LAWRENCE WHEELER

Excelsior

Each grain of sand on the sea shore
Is like some human mind,
There are many million dull ones
While sparklers are hard to find.

From out of the countless number
We stoop and gather a few,
We carefully polish and rub them
'Till they shine like morning dew.

Then after the work is completed
We scatter them back with their kind,
And because of their star-like sparkle
Every one again we can find.

Thus Excelsior gathers her men
From every walk of life,
And when she puts them back again
They're prepared for their struggle and strife.

Thus she has branded every one,
They are making the nations best,
They are no longer the common sand,
For they clearly outshine the rest.

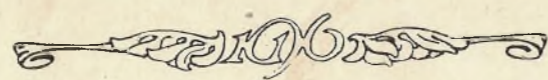
C. H. B. '19.



SEVENTH ANNUAL ADELPHIAN BANQUET



THIRTEENTH ANNUAL EXCELSION BANQUET



The "W" Association

The members of this Association are those who have lawfully won a "W" by participation in some form of intercollegiate athletic contest.

The Association has, as its purpose, the maintenance of noble, clean, and manly athletics in Missouri Wesleyan College, and demands the same in the teams with which they compete for honors.





Y. M. C. A. Cabinet

Officers

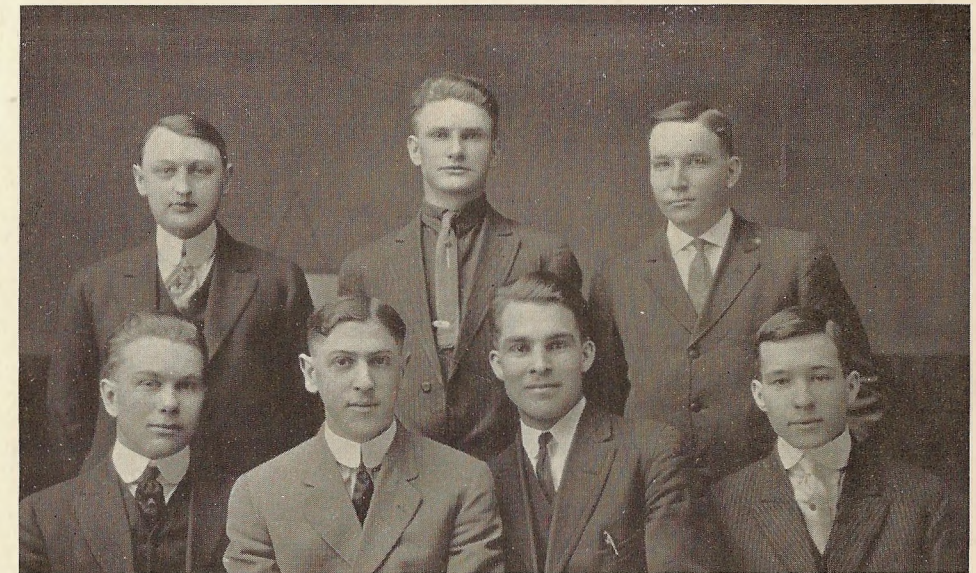
MRS. NELSON HORN	-		<i>President</i>
REBA TOMLIN	-	-	<i>Vice-President</i>
DORA JENKINS	-	-	<i>Secretary</i>
AVANELLE MURPHY	-	-	<i>Treasurer</i>

Chairmen of Committees

FAY CHEESMAN	-		Devotional
CLAUDIA STONE	-	-	Bible Study
SADIE BRYAN	-	-	Missionary
VERA HORN	-	-	Intercollegiate
AVANELLE MURPHY	-	-	Finance
REBA TOMLIN	-	-	Membership
RUTH ELLWOOD	-	-	Social

Advisory Board

MRS. H. R. DeBRA	MRS. C. E. JEFFERS
MRS. J. C. BOWMAN	



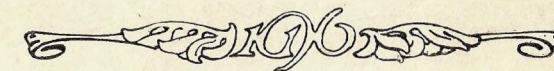
Y. M. C. A. Cabinet

Our Y. M. C. A. is doing work, thru its weekly meetings, which is not only influencing the moral ideals of the members, but also developing high and noble characters which will be enabled to withstand the storms and tempests of the world and humanity at large.

Its influence has spread beyond the walls of the College in that several Gospel Teams have been sent out to neighboring villages and magnificent success, in turning lives into paths of righteousness, has crowned their efforts.

Officers

T. P. McKEE	-		<i>President</i>
R. E. PARSHALL	-	-	<i>Vice-President</i>
H. C. EBERHART	-	-	<i>Treasurer</i>
JOSEPH THOMPSON	-	-	<i>Secretary</i>
EUGENE HILLS	-	-	<i>Social Chairman</i>
CHAS. N. BURROWS	-	-	<i>Gospel Team Chairman</i>
GLENN HATFIELD	-	-	<i>Devotional, Bible and Mission Study Chairman</i>





Wesleyan Glee Club

Trips have been made in the interest of the College, to Turney, Laclede, Forker, Carrollton, Hale, Meadville and Brookfield.

PROF. H. C. KELSEY	Conductor
EUGENE L. HILLS	Business Manager
CARL GOOD	Soloists
CLARENCE McDONALD	
ROBERT PARSHALL	
EUGENE DeBRA	

Personnel

1st Tenors—
 CARL GOOD
 OVID SACKMAN
 RTHUR STONE
 HARRY THOMAS

2nd Tenors—
 WM. DICKINSON
 EARL GOOD
 CLARENCE McDONALD
 ROBERT PARSHALL
 ALDO SNYDER

Baritones—
 EUGENE DeBRA
 ROLFE DOUGLAS
 ORLEY EDSON
 EUGENE HILLS
 WILSON THOMAS

Basses
 ARTHUR BULL
 ALVA F. ENGLEHART
 ELZA N. GARRETT
 EARL SNYDER
 EARL THOMAS



Wesleyan Quartette

HARRY THOMAS, <i>1st Tenor</i>
ROBERT PARSHALL, <i>2nd Tenor</i>
ROLFE DOUGLAS, <i>Baritone</i>
ALVA F. ENGLEHART, <i>Bass</i>

This is the second year for the Wesleyan Quartette, and with their consistent practicing, and the coaching of Prof. Kelsey, will make an unrivalled quartette in this part of the country.

Some of their dates, besides Glee Club trips and local events are:

TURNEY M. E. CHURCH	October 31
MT. PLEASANT	November 4
ALTAMONT HIGH SCHOOL	December 5
HEMPLE	December 12
MABEL	December 14
KIDDER AND BARWICK CHAPEL	January 9
TINDALL	March 4-5
JAMESPORT	April 15-16





Ladies' Chorus

Good Voices

Well Trained

Under the direction of Professor Kelsey, these young ladies have been developing their talents and are being highly appreciated where they render entertainments.

"Each finest human wish and sense,
The highest soarings of the soul,
All life's sweet undertones, intense
Along the chords of music roll."

1st Soprano
SYLVIA FELLERS
MRS. BYRON HORN
GRETA SNIDER
ESMA SOMERVILLE
LAURA WITT

2d Soprano
FAY CHEESMAN
OPAL MOORE
BESSIE STONER
ETHEL VOSS

1st Alto
MARGUERITE CORNISH
MRS. NELSON HORN
ROWENA ROGERS
ADA WOOSLEY

2d Alto
AUDRA CAWOOD
FAYE JOHNSON
LUCILE PARTIN
MARY SIMMON



Ladies' Quartette

MRS. B. E. HORN

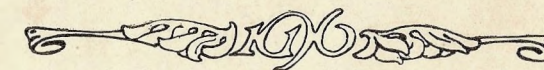
ETHEL VOSS

MARGUERITE CORNISH

LUCILE PARTIN

Four talented girls. To hear them is a delight.

"For music's all pervading power,
Ennobles and exalts the soul;
It may beguile a dreary hour,
Or sway us tow'rd a lofty goal."





M. W. C. Orchestra

Missouri Wesleyan's orchestra, although a recent organization, has become a leading feature of our school. Its leader and its members are sparing neither their time nor their talent but are freely lending themselves to the work with a determination that stops nothing short of the very best. Not only within our own circles has their music been highly applauded, but wherever they go it meets with hearty approval. Their reputation is rapidly spreading. All thanks and appreciation are due them for their most excellent work.

MISS FRANCES JONES, *Director*

OPAL MOORE, *Pianist*

1st Violin—
AUDRA CAWOOD
MARJORIE CORN
MARTIN B. FORD
MARY SIMMON

2d Violin—
BESSIE BURGESS
WILSON THOMAS

Cello—
JESSIE THOMAS
CLAUDIA TURNER

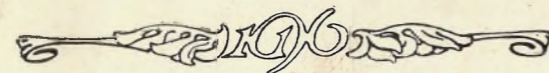
1st Cornet—
EUGENE DeBRA

2d Cornet—
EARL ECKELBERRY
PAUL JONES
OVID SACKMAN

1st Clarinet—
ALVA F. ENGLEHART

2d Clarinet
W. L. DICKINSON
MACK WARREN

Drums—
EUGENE HILLS

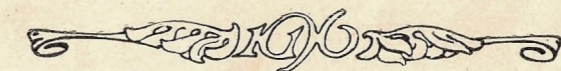


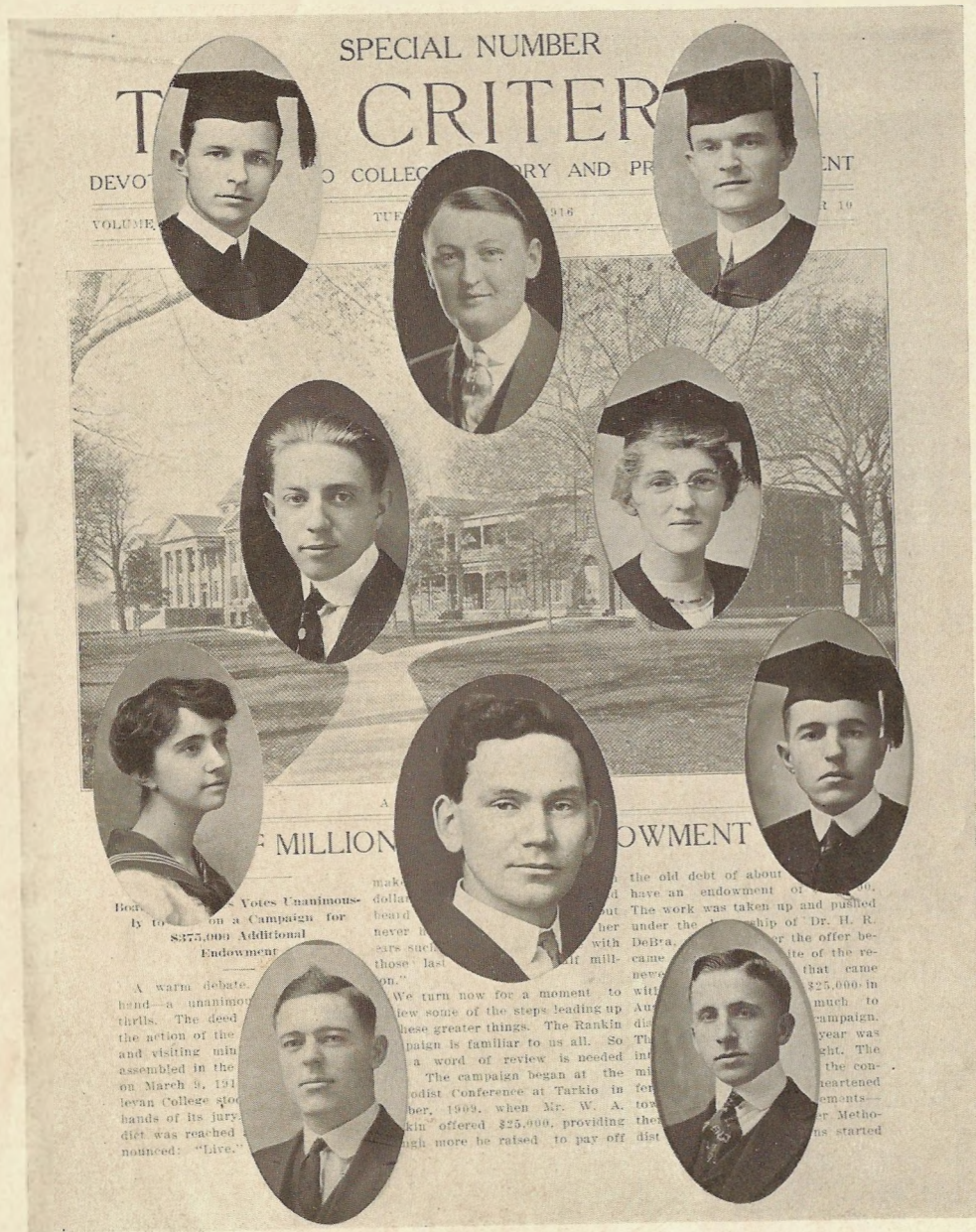
Inter-Collegiate Prohibition Association

The I. P. A. work of Missouri Wesleyan College has progressed this year. Our membership is now twenty-four, many of whom are vitally interested in the work. We sent \$15.00 to the work of the state and two delegates to the state oratorical contest and convention at Fayette.

In the preliminary oratorical contest we had three orators and offered as first prize \$10.00 in cash, and for the second prize, the Sloan gold medal was given. These orations showed that the writers were interested in their work and that they had put much thought into the writing of their productions.

Next year we hope to do a much greater work to advance the prohibition cause in our nation.





The Criterion Staff

NELSON P. HORN	.	.	Editor-in-Chief
E. L. HILLS	.	.	Business Manager
B. E. HORN	}	.	Associate Editors
EDNA OESTERLE			
DAVID METZ	}	.	Local Editors
FAY CHEESMAN			
ROLFE DOUGLAS	.	.	Advertising Manager
FRANK TOMLIN	.	.	Exchange Editor
CARL GOOD	.	.	Circulation Manager
F. W. CLELLAND	.	.	Alumni Editor
J. F. POLAND	.	.	Sporting Editor



PHOTOGRAPHER—A. S. Brown

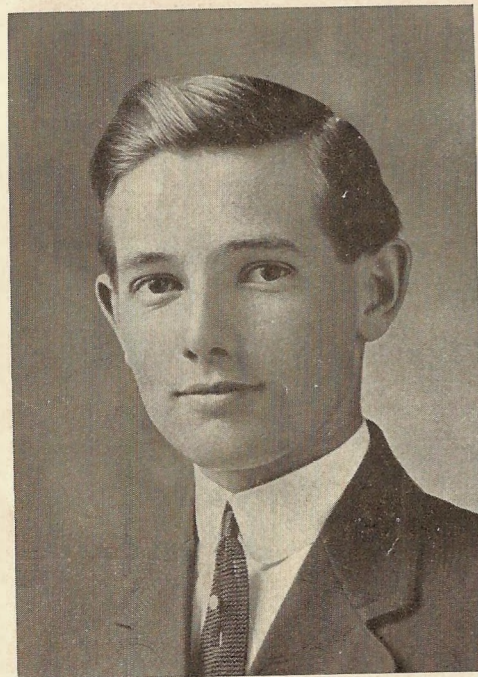
ART EDITOR—Eugene L. Hills

ASSOCIATE EDITOR—Ruth A. Ellwood

LITERARY EDITORS—May Hatfield, Maude Gibson, Alice Olinger, Robert Parshall, Vincent Ellwood, Reba Tomlin

CONTRIBUTORS—J. W. Beach, Miss Carrie Shepherd.

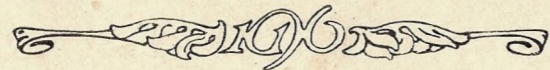
FACULTY COMMITTEE—Mrs. H. R. DeBra, Prof. E. D. Ross, Prof. J. W. Beach.



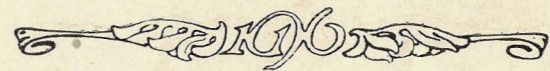
M. L. COOPER, Editor-in-Chief

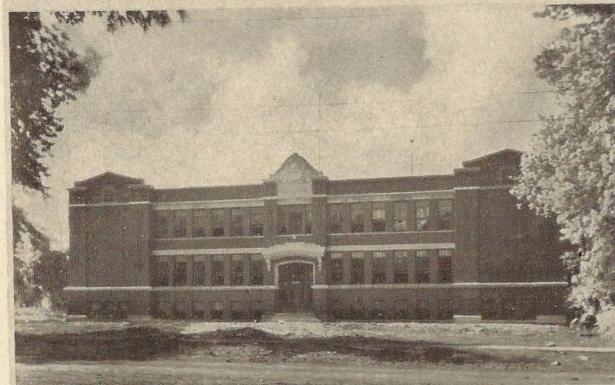


ALVA F. ENGLEHART, Business Mgr.

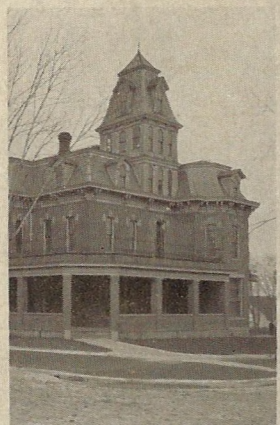


OWL STAFF





CAMERON HIGH SCHOOL.

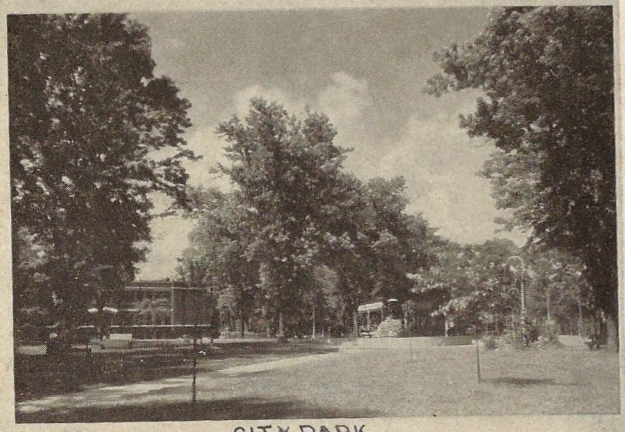


K of P. HOME.

CAMERON
COMMERCIAL
CLUB.



FIRST M.E. CHURCH.



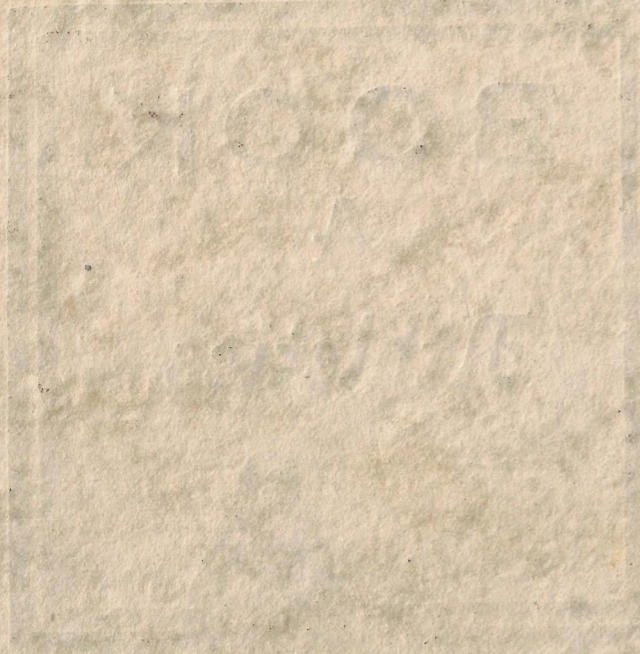
CITY PARK.

BOOK

4

Athletics



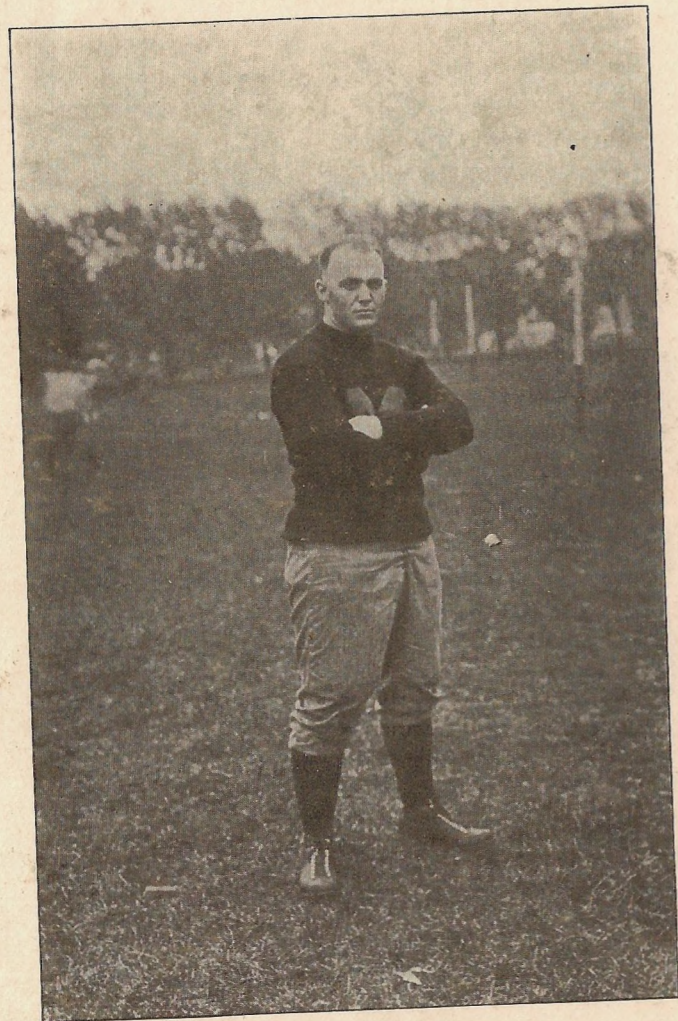


Wesleyan

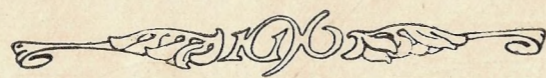
ATHLETICS



Wesleyan



COACH PIXLEE, in Football Togs

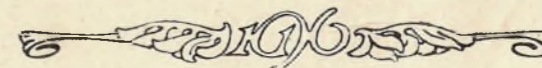


"Musings of the Dopester"



The football season of 1915 was a successful one in many ways. It marked the passing of a crisis in the football situation at Wesleyan, and the beginning of a new epoch. Less points scored against the 1915 "Possums" than any other team that has ever represented Wesleyan. Figured from the standpoint of total scores, Wesleyan scored 146 points to her opponents 17. In games won and lost, the season stands with Wesleyan having six games won, one lost and one tied. However if the Possums had had their share of luck they would have won every game.

Baker University was the opening game and a tough battle. The Possums trimmed them 13-7, which was the only defeat suffered by the Kansas Champions during the season of 1915. Chillicothe Business College was defeated 78-0. The next two dates were given to the College of Emporia and Westminster respectively. Each of the schools canceled their date, leaving Wesleyan three weeks without a hard game. Their open dates were given C. B. C. and Kemper Military Institute, both resulting in victories for the Possums, for which they deserved no especial credit. The game with Central College resulted in a defeat for the Possums, due in the main to the lack of a hard game during the previous four weeks. The team played hard, fierce ball, but the lack of unity, coupled with a strong tendency to fumble, cost them the game, notwithstanding that they carried the ball nearly two yards to their





opponent's one. Central was the only Conference team to score on the "Possums."

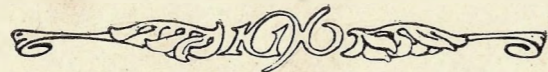
Tarkio was snowed under 20-0 in spite of poor form on the part of the Possums.

Kirkville Normals gave the Possums a harder battle, forcing them to go their best, to land a 14-0 victory. On Thanksgiving day, the team went to Liberty to do battle with Jewells on their home field. A special train with about 300 rooters and a band went along to see the play. The Possums had been pointed for the Jewells and with two exceptions every man was in the best possible condition. Keene, the Possum's star passer and kicker, drew a badly sprained wrist two days previous to the Jewell clash. Kinsella, one of the strongest line men, was the possessor of a broken rib. Along with this handicap the teams were forced to do battle on the worst possible field. A steady rain during the morning had made the Jewell field look like a sea of cold molasses and of nearly that consistency. Outweighed, lacking their best kicker and passer, and with another valuable man badly crippled, the Possums endeavored to show the Champion "Jewells" that there was one team in the conference that had their number. The result of the game was satisfactory from the Wesleyan standpoint although the score was 0-0.

In the first quarter, due to fumbled kicks on the part of Wesleyan, Jewell had three chances to score with first down and but ten yards to go. Each time the Possums threw them for losses. After the first quarter the game was entirely in Jewell territory and during the last quarter mostly within their 30 yard line. The field made kicking impossible, or the game might have been different, for Capt. Poland has never failed to score on the Jewells by the aerial route. The statistics of the game show that the Possums had the better of the argument throughout, for they made yardage twice while the Jewells failed to first down even once. The distance gained from straight rushes was 128 yards to 77 yards in favor of the Possums, showing that they were able to advance the ball consistently for small gains.

Whatever may be said of men who have done their duty on "the team," whether it be class, department, scrub, or varsity, those men must necessarily have practiced the rugged virtues of courage, resolution, self-domination, the power of acting in conjunction with others, resolution to act as gentlemen; and often, what is more important, to act as men. It is these qualities which make athletics so invaluable to the young American, and so to our schools and colleges.

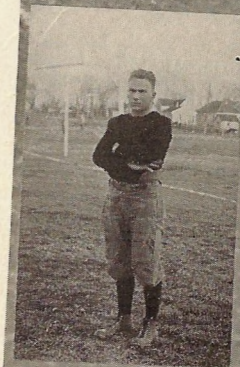
The conduct of our 1915 team was always that of men and gentlemen, even under the most adverse and unfavorable conditions, and it will go down in history as a successful team, one which did not "Beat Jewell," but deserved to. Here's health to them.



"ING" POLAND
Capt. "Ing" Poland passes from the ranks of M. W. C. football men, leaving behind the most enviable record of any man of any of our previous teams—twice captain of our football team and admitted by all the Missouri Inter-collegiate Athletic Association officials as the best all round football man of the Missouri Inter-collegiate Athletic Association; are honors seldom bestowed on any athlete. With the passing "Cap" Missouri Wesleyan loses the hub of their athletic wheel for all the teams of the past three years have been built around him as a pivot. Supreme in football, basketball and baseball—surely he has accepted his share of work and should receive our highest praise. He has been twice chosen as an All-State man; 1914 at quarter, 1915 at half. He is 5 feet 9 inches, 145 pounds and 23 years old. His home is in Cameron, Mo.



HARRY C. LOCKHART
H. "Rip" Lockhart is another of the champs of 1914. Rip was placed at center to fill the shoes of his brother of the season of '14. Rip is Capt.-elect for 1916, and has served three years on the varsity. Wesleyan expects great things of him. He is a fine aggressive player and with his experience should make an excellent leader. He is 5 feet 11 inches, weighs 160 pounds, and claims Linneus as his home town.



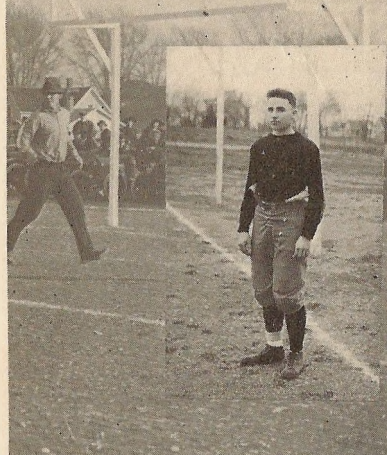
CLAIR EBERHART
"Eb" played his second varsity season with us, and had the satisfaction of attaining his highest ambition that of winning an "All State" end position. He received an unanimous vote of both coaches and officials of the Missouri Inter-collegiate Athletic Association for an end position, and if he could have had a half-back position too. Eb is without doubt the premier end of the Conference. He is fine at blocking, advancing the ball, tackling, and is a wonder at receiving passes and getting down under kicks. He weighs 150 pounds, is 5 feet 6 inches tall and is 22 years old. His home is in Ottawa, Kansas. He will be one of the important cogs in the 1916 machine.





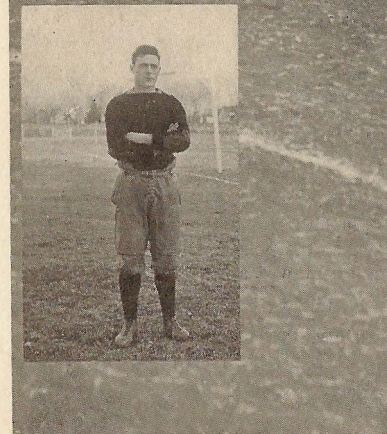
ROY KEENE

"Speck" comes to us from the Pacific northwest, where they grow big and tall, and have web feet. Spec never got going good except in his passing and kicking game. At passing and kicking he had it over anything in the Conference. It was Speck's passes and kicks that Our Possum was holding under cover for the Jewells, and failed to get a chance to use because of the rain and wind. We counted on Speck and Eb being good for one of two scores in that game, but the weather man said "No." Speck is 6 feet 2 inches, weighs 180 and is 20 years old. His home is in Salem, Oregon. He drew an honorable mention at end from both the Kansas City Journal and the Kansas City Star.



WILLIAM REINHART

Bill is a new man with us, but is not new to this country, although he comes from Oregon, along with "Speck." Bill played Quarter and Halfback, alternating with Capt. Poland. This combination gave Wesleyan a high speed change at quarter and half and accounted for a great deal of the punch in the Wesleyan offense. Bill's long suit is open field work, both on offense and defense, he is a strong fast defensive tackler, and an excellent man with the ball. Probably his greatest value lay in his handling of the team and the pep he put in his men. Bill drew a record choice at quarter on the Kansas City Journal All-State team and honorable mention by the Star and Times. Next year he should be able to step out into full harness and make things move. He is 5 feet 8 inches weighs 160 pounds and is 19 years old.



DAVID METZ

Big Dave, a tower of strength on both the offense and defense, played his record season in 1915. He said nothing, but played ball, every second of the game, and any member of an opposing team will tell you Big Dave was there all the way. It was Dave that Wesleyan looked to for gains in times of trouble, and never in vain. He was chosen as second All-State Full-back. The fact that he was not placed at full-back until late in the season doubtless cost him a first in the selection. Dave should be the premier full back of the Conference next fall. He is 6 feet tall, weighs 198 pounds and is 22 years old. He lives in Cowgill, Mo.



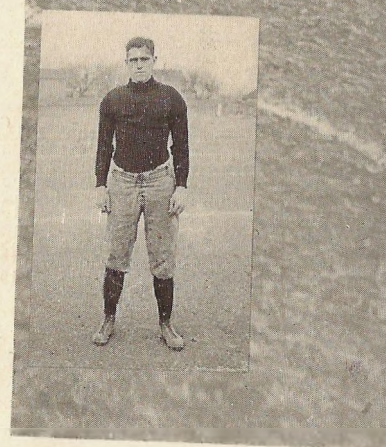
GUY ROGERS

"Pie" played his first football for Missouri Wesleyan during the season of '15. He had some experience on the Cameron High School team. He has all the requirements of a good football man, but was unable to arouse his fighting spirit until the Jewell game. In the Jewell game he found himself and played one of the best games of any one on the field—his defensive work was far above the average. He carried the game to his opponents all the way, and was always on the ball.



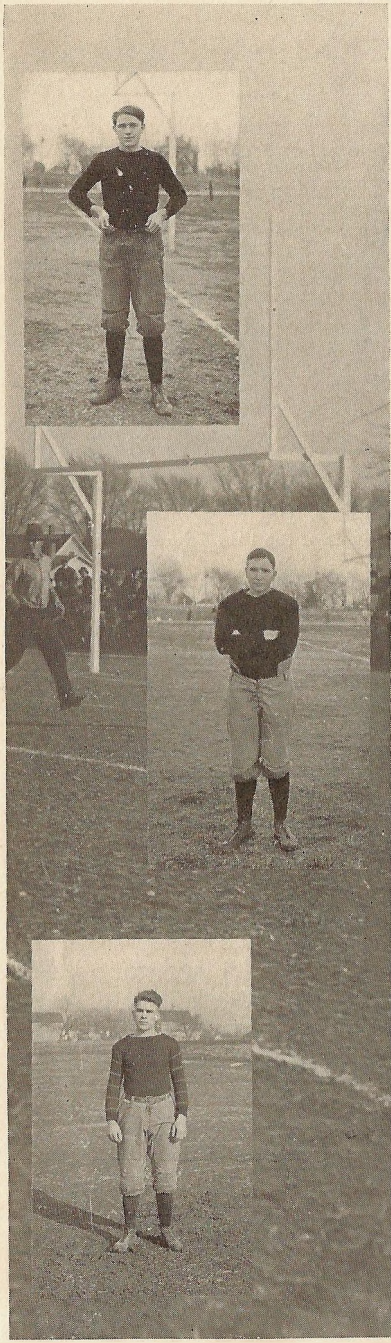
PAUL HOPKINS

Hoppie of the 1914 champs wore a "W" uniform again in 1915 at tackle, and won the honor of being a member of the 1915 All-State team. He was also an All-State guard on the 1914 team. Two years in college football, and two All-State jobs should show the caliber of Hoppie to the most skeptical. Hoppie stepped out in a rush this fall, and played one of the best games at tackle of any one in the Conference. He is 5 feet 10 inches and weighs 170 pounds, and is 18 years old. He hails from Edgerton, Mo.



VINCENT ELLWOOD

"Doc" Ellwood, a member of the 1914 champs played through the season of '15 as a regular and delivered the goods. "Doc" possesses an unlimited amount of pep and aggressiveness. He is the first up and ready to go after each play. He is the embodiment of the real football spirit. Doc should be able to set a pace in '16 that few can follow. He is 5 feet 10 inches tall, weighs 150 pounds and lives in Cameron.



PATRICK KINSELLA

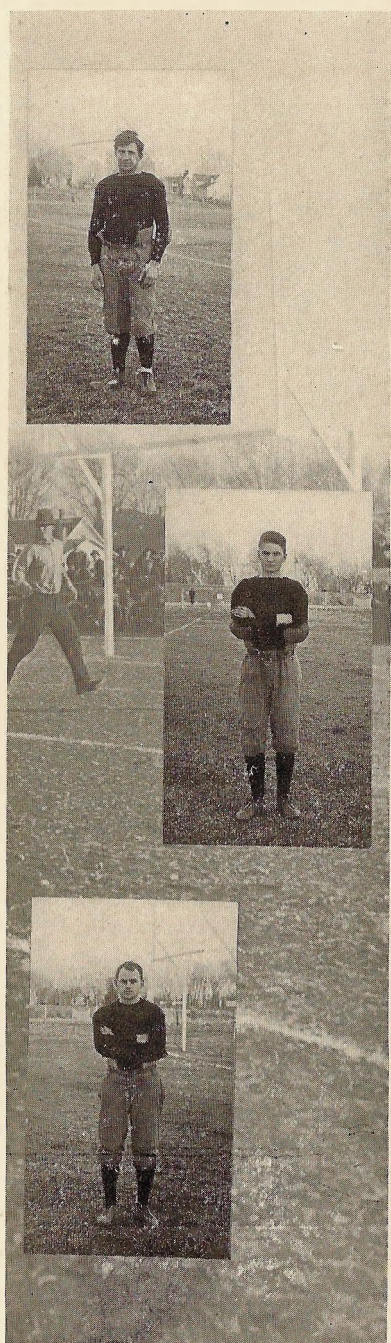
"Pat" is another of Wesleyan's representatives on the mythical All-State team at guard. He is also a Cameron boy, having played one season on the Cameron High School under Pixlee. He is one of the heaviest men on the team. He is 6 feet 2 inches and weighs 195 pounds. Pat lives up to all that the real wish is supposed to be; good natured and not afraid of hard work or a fight. He has all that a football man should have, barring a little speed, but that can be developed. He played through the Jewell game with a broken rib and accounted for two Jewell men. If Wesleyan is fortunate enough to have Pat with us in 1916, we can feel assured that Wesleyan will have at least one real live man.

CHAS. BURROWS

Burrows is another of Wesleyan's heavies. He is 6 feet tall and weighs 190 pounds. He has had three years of football, two at Kidder Institute, and one at Drake University as a member of the freshman team. He is big and fast and plays a fine defensive game. During most of the season he played tackle, but was used at times as a full-back. Burrows runs hard with the ball, and was an all-round valuable man. With the experience he has had, he should be a tower of strength for Wesleyan in the 1916 campaign. He lives at Kidder, Mo.

ROBERT E. PARSHALL

"Bob" was a member of the 1914 champs. He is little, but mighty. Bob's strong point is his willingness and aggressiveness. Bob's failure to make the 1915 team was due to the conflicting outside work, making it impossible to stay out the entire year. However, had it been possible for him to have been out during the entire year, he would have had a regular job on the 1915 Possums.



CLAY BIGLER

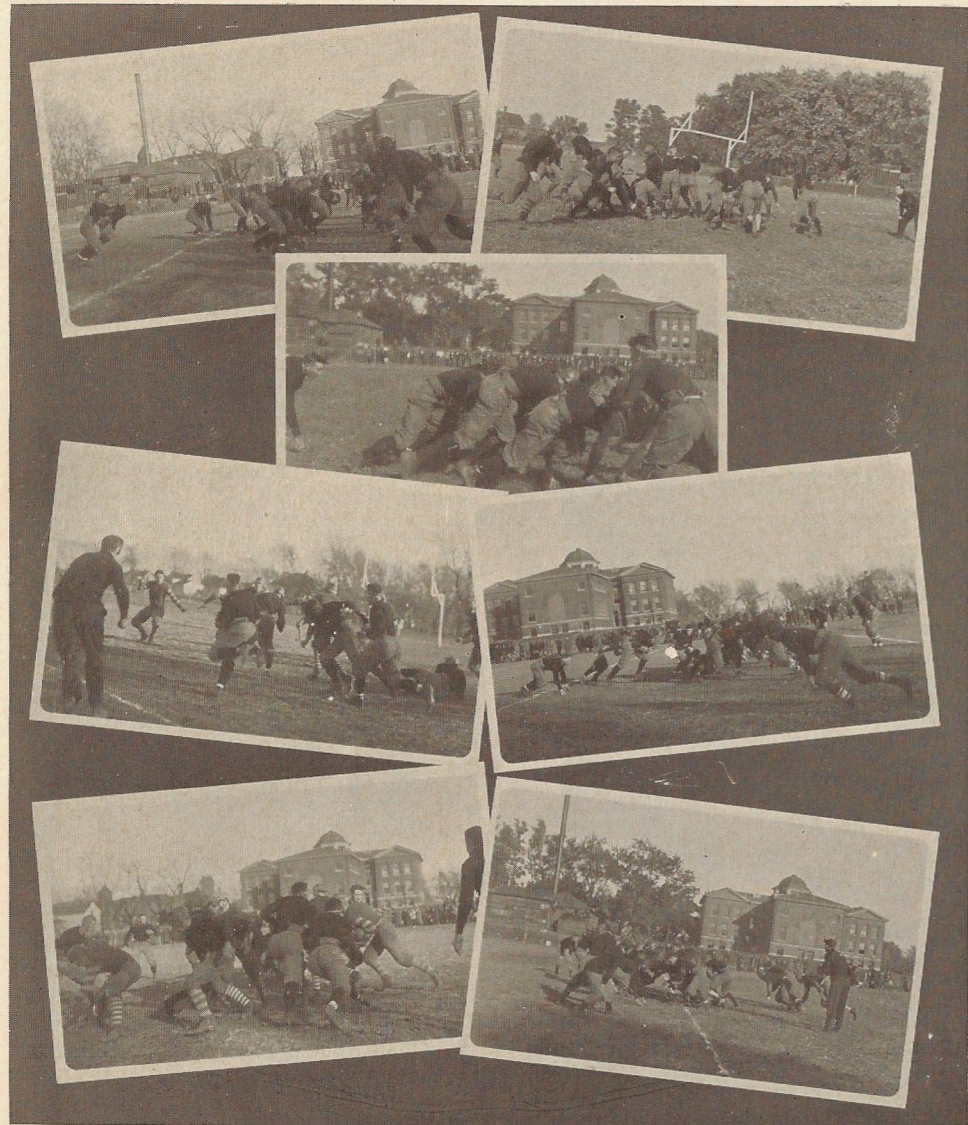
"Big" returned to Missouri Wesleyan after an absence of three years, and served during the 1915 season. He did not round into good trim until late in the season, but finally got going and played three quarters of the Jewell game, and helped Wesleyan put on a drop of gall into Jewell's otherwise sweet cup of joy. "Big" hails from Amsterdam, Mo.

GLENN HATFIELD

Hatfield was always one of the hardest working men of the squad—always ready to do his mite and ask no questions. He did not play in enough games to get his letter, but was almost invaluable at times to take the place of others. Hatfield played at guard and center. His only trouble was an inability to remember plays and signals. With another season he should make the team and be a very valuable man. He is 5 feet 10 inches tall, weighs 155 pounds and is 21 years old. His home is in Spickard, Mo.

HORACE McCOMB

"Hawk" played throughout the season and played some excellent games. During most of the season he was at half-back and he is some half-back, both on defense and offense. In the Jewell game he played end, his regular berth, for Hawk is one of the best ends in the M. I. A. A., and at tackling and blocking he has no peers. Hawk is a Cameron boy.



PLAYING THE GAME



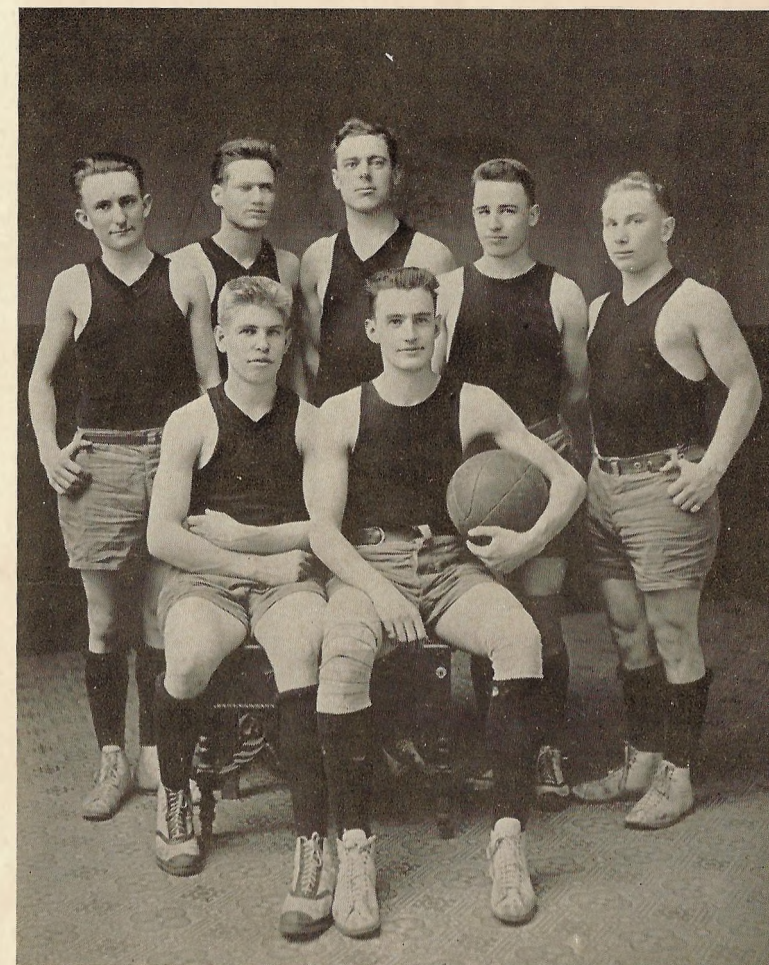
Girls' Basketball Review

A condition similar to the men's basket ball existed in the girls' game—the coach had but one varsity player from 1914-15. The first two games were disastrous. Wesleyan lost to Howard Payne and Central. However by the time Central came to Cameron the team had begun to take form and the Wesleyan girls got revenge for a 28-4 defeat at the hands of Central College. At this point in the season it became impossible to contract further games, and the team had no chance to show their ability. The coach thought he had one of the best girls' teams in the state and thought if given the proper chance, would have demonstrated that Wesleyan would stand high in the rating of Girls' Basketball Teams in Missouri.



Girls' Basketball Team

RUTH ELLWOOD	Center
MAUDE LANE	Center
ROWENA ROGERS	Forward
VERA HORN	Forward
ELSIE LUCAS	Forward
HELEN WRIGHT	Guard
HELEN SHEPHERD	2d Center and Guard
ESMA SOMERVILLE	2d Center
GEORGIA SHEWEY	Guard



Men's Basketball

Basketball season was not satisfactory during the season of 1915-16, for several reasons: Wesleyan was forced to make a complete new team, as not a W man was left from the 1914-15 team. This condition naturally meant that the squad would need lots of hard work. Along with this was a misunderstanding about schedules until practice really started two days previous to the first game. The coach places the blame on a late start with absolutely new material.

Wesleyan



Wesleyan

BOOK

5

Scenes and Locals



Wesleyan

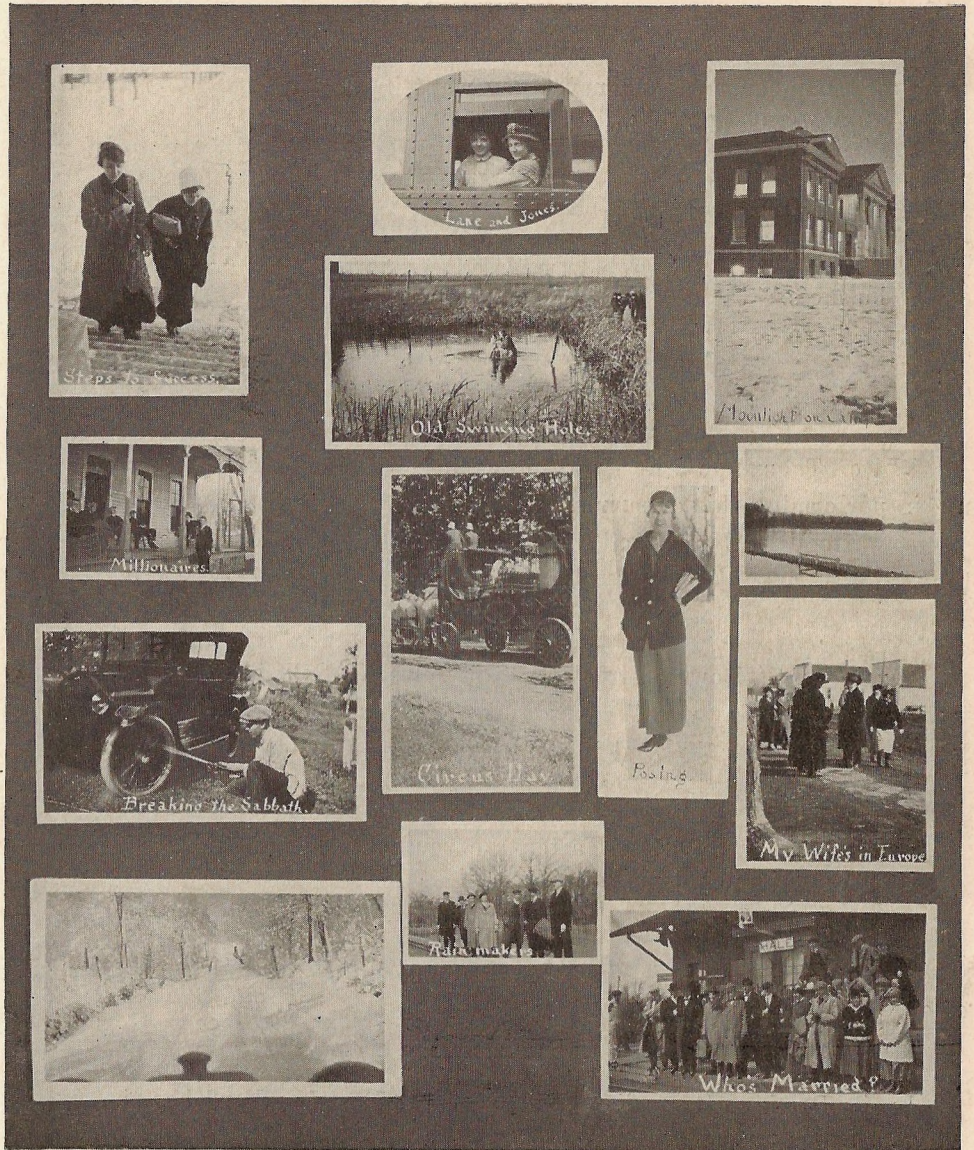


Wesleyan

Wesleyan



Wesleyan



Wesleyan

Thanks to the good nature of Prof. Glover he has consented to bear all jokes that may be showered upon him.

Lucile Partin: "Prof., when are we going to have our exam.?"
Prof. Daugherty: "Whenever you want it."
Lucile: "I'll take it the 4th of July."

Prof. Cope leading chapel: "Enough good dope goes to waste in this chapel to run the State of Missouri even if the 'Star and Times' should go out of business."

Prof. Beach: "Therefore I say unto you, fellow teachers, spare not the dope."

Wilson Thomas to Miss Dodd in physics class: "Shall I get my violin to use in performing this experiment?"

Miss Dodd: "I wish you would. I could not perform it for I have no beau."

Dr. DeBra: "I owe an apology to my class in College Life and Work, I forgot that yesterday was Wednesday." (Students laugh) "Or am I wrong? Is today Wednesday?" And it happened to be.

Prof. Daugherty: "Mr. Harter, are you green or emerald green?"
Harter: "I think I am long green."

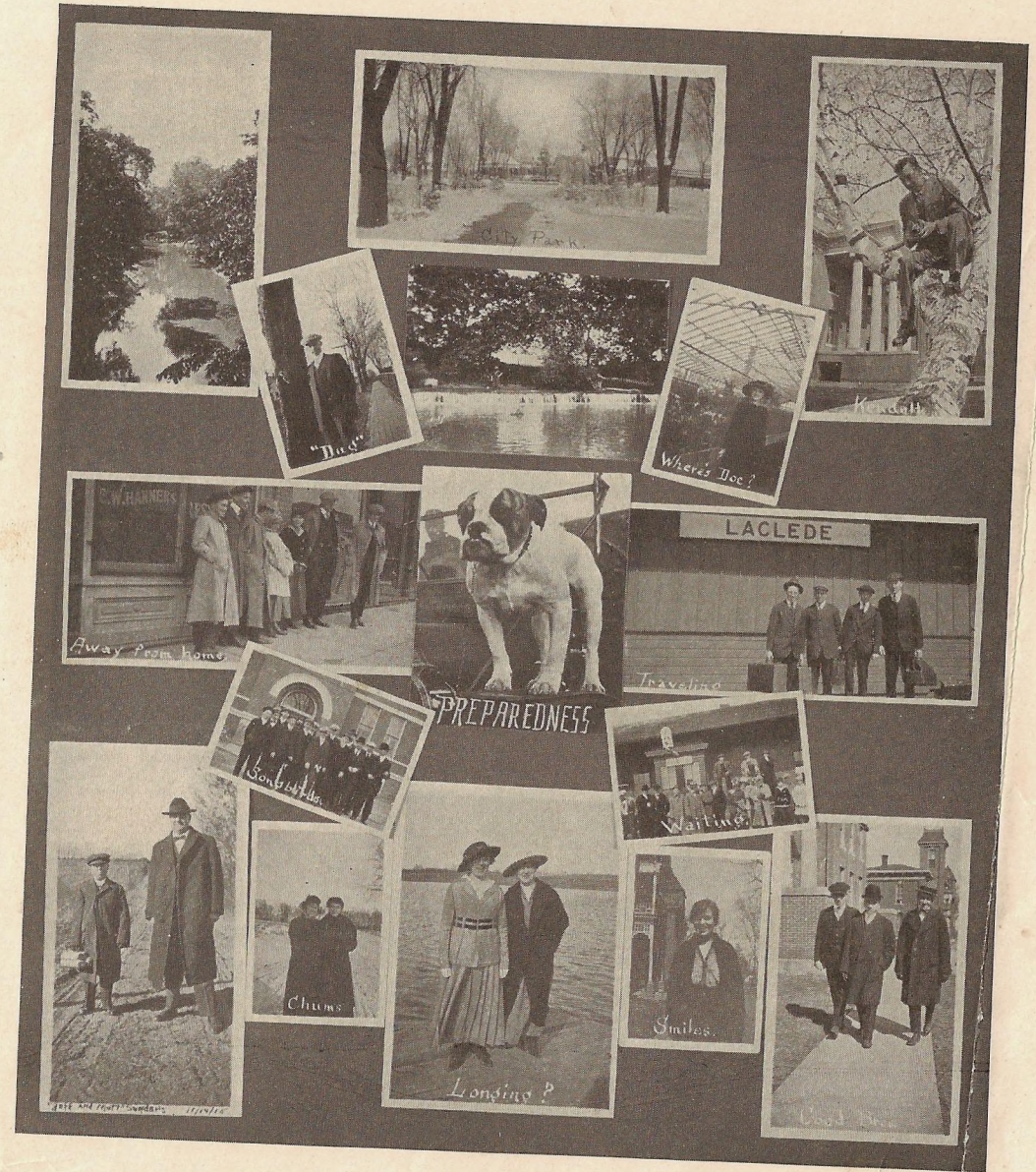
Prof. Clelland: "It is always hard for me to remember the exact words of other great men."

Lucile Partin (after a long walk with Ford): "Mr. Ford has the awful-est taste in his mouth, tonight."

Mr. Partin: "How do you know what kind of a taste Ford has in his mouth?"



Wesleyan





Your Friends can buy Any-
thing you can give them
Except Your Photograph



A. S. Brown,
Photographer



CAMERON, MISSOURI



Sunday afternoon—The students were all away on a vacation. No one came to the boarding club for supper except three faculty members,—Miss Newbecker, Prof. Ross and Prof. Beach. Two's company but three's a crowd, and that is what spoiled the tete-a-tete.

Alice Olinger (studying physical defects): "Would you say that teeth are a defect?"

Viola: "I'll hit you."

Mr. Eberhart: "I'll get behind the door."

Viola: "If you do I'll just squeeze you."

March 22: One of the faculty is still breaking library rules by loud talking.

Ruth Ellwood at Y. M. C. A. reception, after a program of music and readings: "Now you can all just enjoy yourselves again."

Fred McKee (tossing up pieces of cheese and catching them in his mouth): "Girls, you can't do this."

Blanche Lovell: "What, miss your mouth? I couldn't."

Prof. Daugherty: "Mr. Ellwood don't play with matches, you'll burn soon enough."

Prof. Clelland (in Ethics class): "Should the head of the family be dual or not?"

Cooper: "It's often times a duel most of the time."

Miss Dodd: "The other day Mr. Englehart and I were performing an experiment. In some way I got connected with Mr. Englehart's sweater sleeve, and I received a terrible shock."



C. A. LEIBRANT

Jeweler and Watch Repairer

Every
thing
in

CLOCKS,
WATCHES,
JEWELRY,
DIAMONDS,
SILVERWARE
AND CUT GLASS

All Our Goods are Guaranteed

209 E. Third St.,
Cameron, Missouri

The Cameron Sun

PRINTING FOR
PARTICULAR
PEOPLE

Special Attention given to Society
Work and College Annuals

For SHOE NEWS
and NEW SHOES



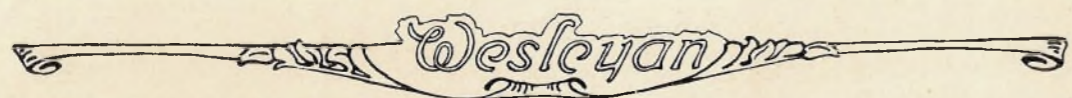
REMEMBER
THIS IS
THE PLACE

We Always Appreciate a Look

Raleigh S. Brown,
The Shoeman

If
It's
Candy
It's
At
NEFF'S





Marguerite Cornish: "What kind of cattle does Mr. Dickinson keep?"

Miss Grundy: "Oh! Cows and hogs."

Buzz-z went the telephone bell at the Dormitory.

"Hello, is this Miss Newbecker?" asked a deep bass voice from the other end of the wire.

"Yes sir" was the reply.

"Uh—well—do you know who's talking?"

"Oh yes! It is Professor Ross."

"Well—Uh—have you an engagement for 3:15 this afternoon?"

"Oh no!"

"How would you like to take a walk to the College Farm?"

"Oh that would be fine, thank you so much."

"Very well, Uh—er—I'll call for you at 3:15."

"All right, thank you. Goodbye."

"April Fool" came back the reply as a college boy at the other end of the wire hung up the receiver.

Joe Thompson recently received a very pleasing proposal of marriage from a young lady who was taking advantage of the leap year privilege. This was his hasty reply: "Thank heavens, YES! Joe."

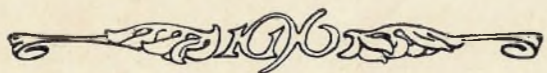
Marjorie Corn: "I know a fellow who calls everybody honey."

Lucile Partin: "That sounds just like a fellow I know."

Some of our students are not strictly up to date. As a result Reba caused Prof. Clelland to flunk an ancient Bible authority.

Dormitory dictum: Every girl must have a chaperon until she has a chap-of-her-own.

Mr. Parshall: "It is raining hard, yet the water is coming down soft."



Parry & Gorrell

Clothing

Gents' Furnishings,
Shoes, Etc.

The Daily News

Established 1905

B. B. WITT, EDITOR AND PROP.

ALL THE HOME NEWS

VALUABLE ADVERTISING
MEDIUM

Job Printing

Receives Special Attention by
Workmen who "Know How"

DR. O. A. SMITH
DENTIST

SPECIAL DISCOUNT TO STUDENTS

Let

POLAND

Frame Your Pictures

Corner Drug Store

The Home of Blue-Jay
School Supplies, Conklin
Self-Filling Pens and all
School Supplies. Drugs,
Books, Wall Paper, Win-
dow Shades, Paints and
Oils, Etc.

Victor Talking Machines
Records and Needles

S. H. HOOK & COMPANY





Alice Olinger: "Clair, you are too short for a soldier; they'd always fire over your head."

Claudia Stone: "Yes, but if they fired low they could never miss him."

Clair: "I don't know. My feet are small."

The preceptress was so busily engaged in entertaining a professor in South Parlor that one of the dormitory girls was obliged to assume the responsibility of enforcing study rules and regulations. Prompt in the performance of her duty she rang the 'good night' bell. The warning was unheeded. An interesting conversation in the parlor was only half finished when the second bell rang loud and long. With disappointed looks the couple bade each other a hasty goodnight, and the professor departed. What was the trouble? Nothing only the bell rang ahead of time,—but even faculty members must sometimes conform to rules.

Prof. Urban: "What did the Apostle Paul mean when he spoke of having a 'thorn in the flesh'?"

Prof. Ross: "I think he meant his wife."

Prof. Daugherty: "Miss Lane, I believe you could make a monkey laugh."

Miss Lane: "Is that the reason I can make you laugh?"

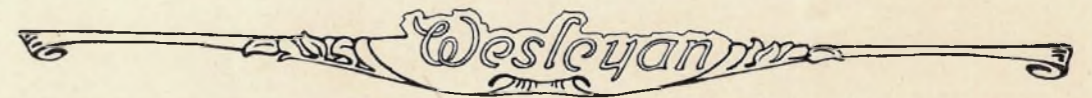
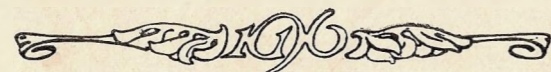
Dormitory girls arranging the parlor chairs for company: "What shall we do, Miss Newbecker, if any more come we haven't enough chairs?"

Miss N.: "Oh, I don't know, unless you double up."

Mr. Englehart: "Miss Ellwood, are your majors Social Science and Modern Language?"

Ruth: "I don't know, I hadn't heard about it yet."

Reba Tomlin (In "Owl" meeting): "I have a contract on the mind."



DeShon & Son

Feed and Fuel

**Coal Oil and
Gasoline**

City Phone 675 Mutual 144

*I Carry an up-to-date line
of Jewelry*

Call and See Me Before Buying

Steele McClean

Successor to S. J. Sloan

V. R. McCUE
DENTIST

OPPOSITE PARK, RIGGS BUILDING

C. N. STUCKER

—FOR—

Society Brand Clothes

S. & W. Shirts and Collars

—FOR—

THE SWELL DRESSERS

When Down Town, Meet Me at the

"DIANA"

Sanitary Service at a Sanitary
Place

HOT AND COLD DRINKS

(FORMERLY THE CANDY KITCHEN)

CUT FLOWERS FOR EVERY PURPOSE

We Grow All Our Flowers

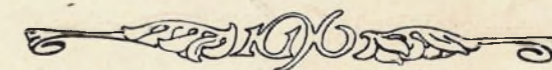
RALPH W. WARD, Florist

Both Phones

Flowers Shipped Anywhere 415 S. Walnut St.

Shirts, Ammon & Co.

The Farm Equipment Store





Kate Farwell: "Oh, there is my lost heart."
 Mr. Butler: "Give me your heart."
 Mr. Laughlin: "No, I think it already belongs to me."

Helen Shepherd gave a synopsis of the Caesar lesson to which Mr. Shewey objected. "What are your objections to me, Mr. Shewey?" said Helen, meaning her story.

Mr. Shewey: "None at all."

The longest way 'round is the sweetest way home, but Hawn says he'll take the Lane when it comes to going to the banquets.

Cornbread and bacon are enough to make angels of anybody—Prof. Cleland.

Mr. Butler (noticing the pennants on the wall): "Oh, look at the pretty invitations!"

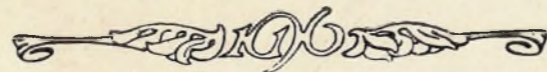
May Hatfield: (Picking up a book entitled "Love and Marriage"): "Say, that looks interesting."

Prof. Daugherty: "Miss Cleveland, now you may describe your ideal man."

Miss Cleveland: "Well, I don't want him to have any epidermal organs."

Esma Somerville: "These cookies have been on the floor."
 Claudia Stone: "Keep still, they don't charge for the dirt."

Mrs. McKee: "Tell some fact about the domestic life of Coleridge."
 Miss Sommons: "He and Southey married sisters and soon after Coleridge was placed under the doctor's care."



W. E. HIBBS

Dry Goods, Cloaks, Suits and Millinery
 CAMERON, MISSOURI



This store now presents an ever changing exposition of New Goods.

It is the destination of those in search of style information as well as those who wish to make advantageous purchases.

Hardly a day passes, but that new goods arrive—they come from the great merchandise centers of the country with pleasing regularity.

New things are constantly being put on display—there are almost always several new assortments to greet you.

Present stocks which have been placed for a short time are the foundations upon which we are now building. Throughout the season fresh assortments will be added to keep our merchandise structure complete and well balanced.

And it is with no little pride that we present the splendid values we have succeeded in offering—even better than usual.

QUALITY VALUES VARIETY

Jaccard Jewelry Company

Engraved Commencement Stationery,
 Class Pins and Rings, in exclusive and
 original designing.

All are products of the Jaccard Shops
 —perfectly executed, reasonably priced.

Samples Upon Request

1017-1019 Walnut Street,
 KANSAS CITY, MO.

—THE—

First National Bank

CAMERON, MISSOURI

Capital \$50,000

Surplus and Undivided Profits
 \$35,000

Your Business Solicited

J. A. RATHBUN, President
 W. A. CONKLIN, Vice-Pres.
 H. F. LAWRENCE, Cashier.



Arthur Stone was preparing to take his sister Claudia car riding, when Claudia said: "Don't forget to fill up the regulator."

Prof. Daugherty: "Miss Partin, was that a Ford I saw your father breaking up this morning?"

Mr. Cooper: "Miss Tomlin, do you go with Good or does he go with you?"

Miss Tomlin: "I don't know, I never stop to see."

Prof. Ross: "When was the 'Revival of Learning'?"

Harter: "Just before examination."

Prof. Daugherty: "I wonder if I could not ask the gentlemen to call on the ladies at North Hall in the afternoons instead of evenings."

Laura Grundy: "Well, I don't see many of them coming at any time."

Prof. Glover: "Mr. Hawn has lost an overcoat recently, seems as though someone is in need of traps."

Bessie Stoner: "What is the 'No Nothing Movement'?"

Cooper: "The movement that is going around here."

Prof. Daugherty: (the morning after the play "Daddy"): "Say, Poland, Vera Horn has long arms, hasn't she?"

Poland: "I don't know, why?"

Prof. Daugherty: "I saw her put her arms around Hills last night in the play."

Prof. Clelland (In class discussing bald-headedness): "Extermination seems to be due to suffocation."

—THE—
Interstate Restaurant

Eats Of All Kinds

MEET THE FELLOWS HERE

Prompt Service and Everything
Sanitary

JOHN BEECHNER, Prop.

"Safety First"

There is Absolute
Safety in Eating

Cream of Quality

Ice = Cream

We use milk products from Tuberculin tested cows only, thoroughly pasteurized and manufactured under strict sanitary conditions. Guaranteed to comply with all pure food laws.

Cream of Quality Ice Cream

Manufactured by

The Cameron Dairy Co.
CAMERON, MISSOURI



THE PROOF OF A
PUDDING IS IN
THE EATING

Likewise the Proof of
a Suit is in the Wearing

The Dillener Clothing
Co. is constantly striving
to please the College
fellow.

Dillener Clothing Co.

Cameron, Mo.



Miss Murphy (In Chemistry): "Prof. there is an awful lot of gas in here."

Prof. Daugherty: "I told you to keep your mouth shut."

Cooper: "Sad affair about Doc Ellwood having concussion of the brain, wasn't it?"

Hills: "What was the matter?"

Cooper: "He was struck with an idea."

Bessie Stoner: "I must quit working and go to studying."

Mr. Monger (finding a mitten on the walk): "Does this belong to you girls?"

Girls: "No, you may have it."

Mr. Monger: "I don't need it. I have enough to last me all winter."

Reba Tomlin: "I'm going to poison Prof. Clelland's cat."

Ellwood: "Bessie, won't you do me a small favor?"

Bessie: "Sure, what is it?"

Ellwood: "Write my girl a letter."

Bessie: "What will I say?"

Ellwood: "You ought to know by this time what I would say."

Vanita goes to the kitchen. Earl soon follows. A chair is heard to fall. Vanita calls out—"Good land! can't you find my mouth! !"

Nelson Horn (in Chapel): "I object to always being the yell leader in Chapel. I'd like to see someone else have a try at it."

Prof. Daugherty: "You'll have to blow your own Horn, no one else will."



FARMERS BANK of Cameron

Established 1878

Cameron, ::: Missouri

Capital and Surplus \$125,000

N. S. GOODRICH, President.

W. G. SLOAN, Vice-President.

J. H. BOTTHOFF, Cashier.

H. B. COOPER, Ass't. Cashier.

Safety Deposit Vaults for Rent

Board of Directors:

Jas. C. McComb C. A. Gross

N. S. Goodrich C. A. Risley

H. B. Cooper T. L. Wiley

J. A. Livingstone G. O. Wallace

W. G. Sloan

Interest Paid on Time Deposits
and Savings Account

We Solicit Your Business

Star Bottling Company

McComb Bros., Props.

Manufacturers of

Soda Water, Ciders, Ginger
Ale and Coca Cola

in

Sterilized Bottles

Soda Water equal to Any and
Surpassed by None.

N. E. OWEN

The *Rexall* Store

DRUGS, BOOKS, KODAK SUPPLIES, SPORTING GOODS

123 E. Third St.

The Cameron Trust Co.

Capital and Surplus \$170,000.00

Does a General Banking Business, Pays Interest
on all Deposits. We invite students and all
others to call on or write us for terms. : ; :





Bessie Stoner: "At Maryville the history teacher asked questions that covered so broad a field, yet you were supposed to answer in three or four words."

Ailie Cleveland: "My three or four words would be, 'I don't know'."

Frank Lawrence (To his mother who was lecturing him for staying out so late of nights): "Yes, but Mamma, you don't know Elsie."

Miss Smith: "Say, Prof. Daugherty, let me see your list of events again please."

Prof. Daugherty: "Do you want to see my dates?"

Miss Smith: "Well, yes!"

Prof. Daugherty (On seeing Marjorie Corn and Mr. Thomas sitting talking in Chapel): Well, look here at Ruth and Jacob, won't you?"

"Doc" Ellwood: "Where does this track run to?"

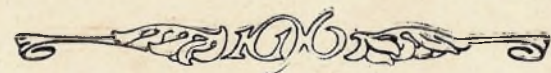
Lunatic: "No place, we keep it here to run trains on."

Reba Tomlin: "I don't like this six days school system. Why, it doesn't give me time to wash my face."

Prof. Daugherty: "Everyone in Chemistry A. get your own note book. Last year I let two work together and they were married in the spring. I can't be responsible for any such results as that."

Prof. Clelland (leading Chapel): "How many of the faculty remember the lesson which Prof. Beach read to us yesterday morning?"

Prof. Glover alone remembered.



**THE WHITE WAY
MEAT MARKET**

The Place For Quality

McClean & Livers

City Phone 51

Mutual 99

"DO IT ELECTRICALLY"

Don't be a back number. Get those Electrical Appliances that make life worth living. The latest out at the Lowest Price

Chivens & Son

Electric Shop

S. L. Evans

Dealer in

**Feed, Fuel and
Sewer Pipe**

Agent For
CUDAHY'S OIL

PHONES { City 25
Mutual 116

GOOD THING TO EAT
FOR ALL OCCASIONS

Our Line Is Most Complete

**THOMPSON
GROCER
CO.**

BOTH PHONES NO. 1

Dr. J. C. BOWMAN

BUNGALOW BUILDING

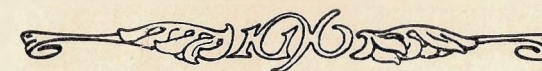
PHONES: Office 21, Residence 240

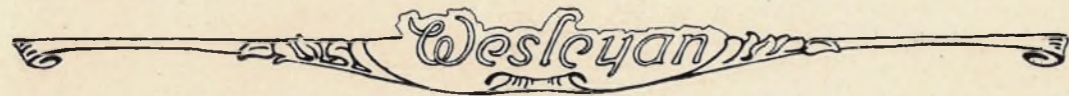
—THE—

Cameron Steam Laundry

Your Patronage Solicited

C. A. BIGGERSTAFF, Proprietor
PHONE 30





Prof. Daugherty: "Ruth, why are apples green before they get ripe?"
Ruth Ellwood: "Because they haven't been kissed enough by the sun."
Prof. Daugherty: "Is that what makes you green?"

Prof. Clelland (in Ethics Class): "Are all husbands and wives friends?"
Parshall: "I should say not."
Clelland: "Now don't make this personal."

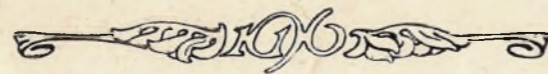
Prof. McGee: "Douglas, what is an antiseptic?"
Douglas: "Anything that will put germs to sleep."

Some of the girls were showing invitations which they had received when Marguerite said, "Maybe next year I will be sending out invitations."

Prof. Daugherty (seeing Ailie Cleveland and Maude Lane talking in the hall about the Biology class, suddenly crouched behind Marjorie Corn as if for protection.) When asked what the trouble was, he said: "Well they are so tall and I am so small that I thought I had better hide behind this cornstalk."

Overheard in the South Parlor:—

Miss Newbecker: "This parlor chair is not comfortable."
Prof. Ross (Greatly disturbed): "Ah—ah—that is too bad."



A critic is a person that they are down on, not up on.

How did the whale that swallowed Jonah obey the Divine Law?
He was a stranger and he took him in.

Harry Thomas was heard to exclaim, "Oh dear!" at Brookfield.

Prof. Ross (eating at the table with Miss Newbecker for the second time in one day): "I've had good luck twice today."
Miss Newbecker: "Oh, have you?"
Prof. Ross: "Well, haven't I?"
Miss Newbecker: "It's hard to say."

Arthur Stone: "Butler is going to sell aluminum ware around Barnard next summer."
Elsie Swan: "Oh, if he does I will buy a lot because I like it."

Douglas, Parshall and Englehart on a Glee Club Trip eating dinner with a family having three daughters.

Englehart passes the honey to Parshall, saying, "Have some honey?"
Parshall passes it to Douglas, saying, "Have some, Honey?" Douglas passes it to his neighbor, one of the girls, without saying anything, they all laughed. Douglas got red and said to her, "I never said anything, did I?" and turns deeper red. "But maybe it would have been better if I had."

Some of the girls at the Dormitory can't understand why Butler shaved his head.

Everett Jones and Alice Olinger were teasing Edna Oesterle and Frank Tomlin, about being so small.

Edna: "Precious things are always tied up in small packages."
Jones: "Yes, but you aren't tied up yet."

Kate Farwell: "Well, Irving, you must think we tell everything."
Irving L.: "No, just what you can get around to."

One of the dormitory girls: "Here comes the bride."
Another: "There goes the groom."
Miss Newbecker stepping in—
"Stiff as a broom."





Kindig & Gage

1886

1916

Dealers in

Feed and Fuel

We Handle the
**CAMERON
DISTILLED ICE**

DR. M. L. PETERS
Physician and Surgeon

PHONES { Office City 86
Residence City 424
Office Mutual 57

Office Over Hook's Drug Store

G. G. BROWN, D. D. S.

30 Years in the Same Office

THE PALACE BARBER SHOP

FOR

HAIR CUTS OF LATEST STYLE

MEET THE FELLOWS HERE

ED. NICHOLS, Prop.

DR. T. H. TYE
Dentist

BUNGALOW BUILDING

Hours 8-12 A. M., 1-5 P. M.

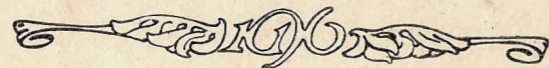
PHONES: City 21x, Mutual 102x

J. N. REED & CO.
WHITE FRONT GROCERY

Phone 737

OUR MOTTO: Good Goods, Good Service, Independent Delivery
A Portion of Your Trade will be Appreciated

Shirts, Ammon & Co.
The Farm Equipment Store



Finale

This is our first and only book. It is inevitable, therefore, that many mistakes and errors will be found herein. Of course we know they are here and we purposely left them in to add interest to the book. If you find something which displeases you, such as a joke at your expense, try smiling. If you find nothing which you wish had never been printed, we most humbly beg your pardon. We realize that this book will not be satisfactory to everyone. To the melancholy it will seem a mass of nonsensical nonsense. To the jesters it will be dull. But, to those interested in every phase of college life, we hope it will appeal and be a pleasing reminder of the year, '15-'16. With no apologies, for we have done our best, we are

THE OWL STAFF.





Bureau. Supremacy Commands Attention!

LOOK back over the past years and ask yourself what other Engraving Institution, specializing in college annuals, has wielded so wide an Influence over the College Annual Field?

Ask yourself if College and University Annuals are not better today because of BUREAU PROGRESSIVENESS and BUREAU INITIATIVE?

You know that the BUREAU OF ENGRAVING, Inc. inaugurated the system of Closer Co-operation with college annual boards in planning and constructing books from cover to cover.

Our marked progress in this field commands attention. Our establishment is one of the largest of its kind in this country. Our Modern Art Department of noted Commercial Art Experts is developing Artistic Features that are making "Bureau" Annuals Famous for Originality and Beauty.

And again, the help of our experienced College Annual Department is of invaluable aid. Our up-to-the-minute system, which we give you, and our Instructive Books will surely lighten your Burden.

A proposition from the Natural Leaders in the College Annual Engraving field from an organization of over 150 people, founded over 17 years ago, and enjoying the Confidence and Good Will of the foremost Universities of this country, is certainly worth your while.

Is not the BUREAU OF ENGRAVING, Inc., Deserving of the Opportunity of showing what it can do for - YOU?

BUREAU of ENGRAVING, INC.
MINNEAPOLIS - MINNESOTA

The House of Originality