


THE
OWL
1928

MADE IN U.S.A.



THE OWL
1928

M. McElwain

THE OWL
1928



Published by
The Junior Class
of
Missouri Wesleyan College
Cameron, Missouri

Volume Twenty

Copyright 1928

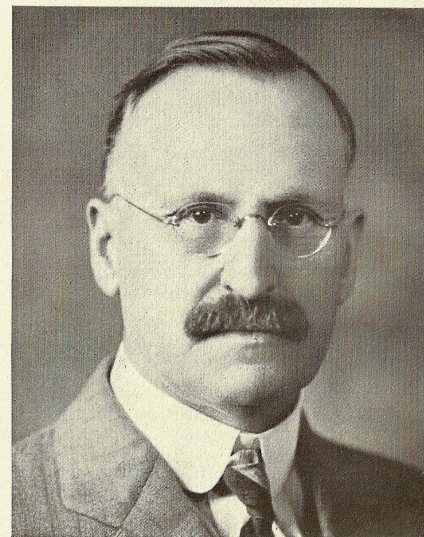
Paul C. Kochan
Editor-in-Chief

Charles W. Thomas
Business Manager

DEDICATION

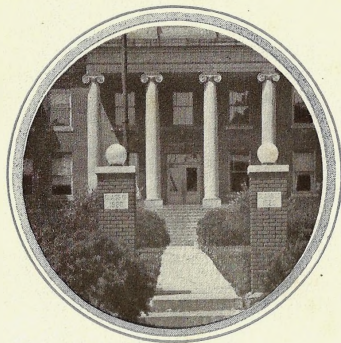
To the one who in Missouri Wesleyan's hour of need brought to it security and economic-wellstanding; to the man who through his fine Christian life inspires others to follow in his footsteps; to President E. J. Gale, beloved by the students of Missouri Wesleyan College, is this the 1928 year-book, dedicated.

DEDICATEE



PRESIDENT E. J. GALE

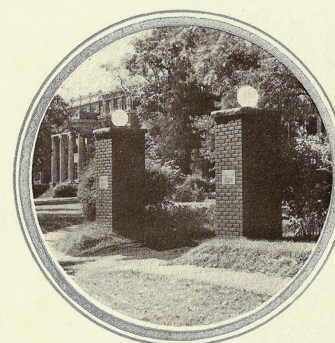
FOREWORD



It is our purpose in this volume to present the school and its activities as each has existed during the past year.

That this is no perfect work we realize. But if it pleases you in the slightest degree at present, and in the years to come will recall to you tender memories of college days spent in Missouri Wesleyan, if it will renew your devotion to this, your Alma Mater, in the years to come, then we shall not have labored in vain.

CONTENTS



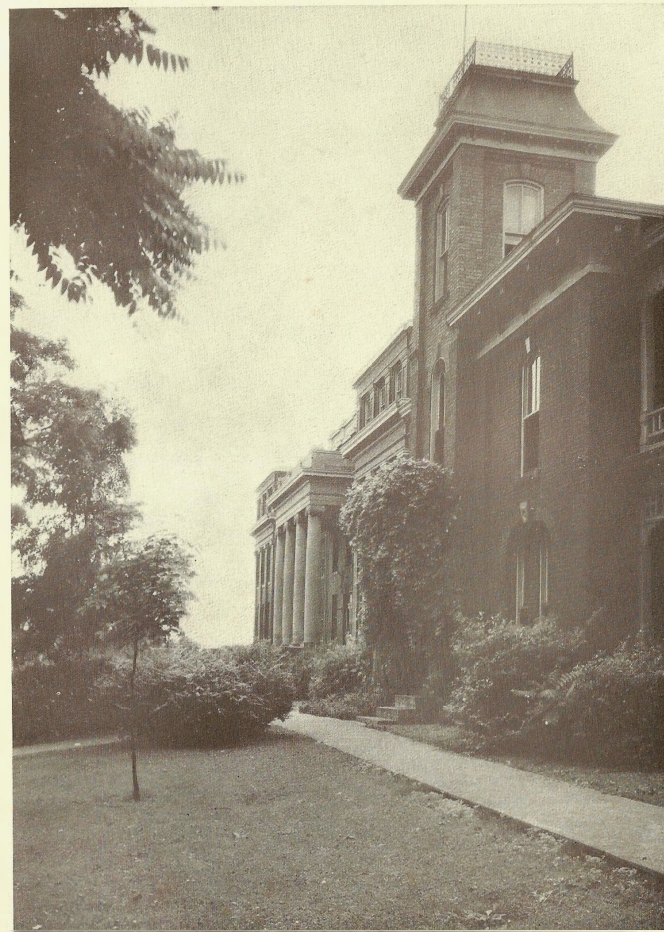
- Book 1 - - The School*
Book 2 - - - Athletics
Book 3 - - - Feature
Book 4 - - Organizations
Book 5 - - - Humor

IN MEMORIAM

HERBERT CLEMENT KELSEY

November 4, 1887 • October 13, 1927

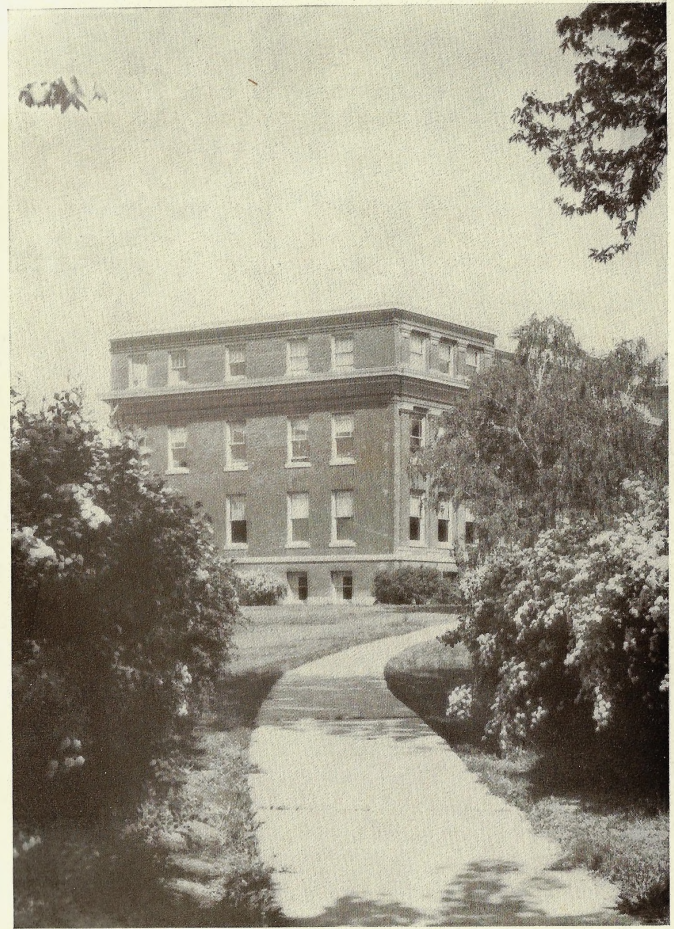
*As a student in Missouri Wesleyan, he
lived for his School and as Dean of
Music he not only loved but he gave his
life for his Alma Mater.*



Hail Thee, Wesleyan!



Sylvan Beauty



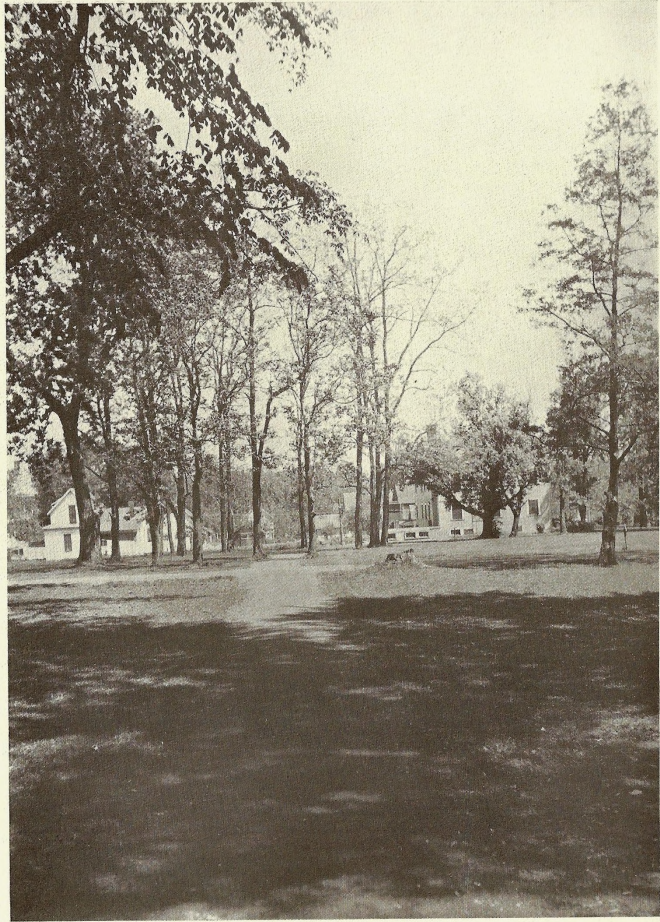
Sunlight and Shadows



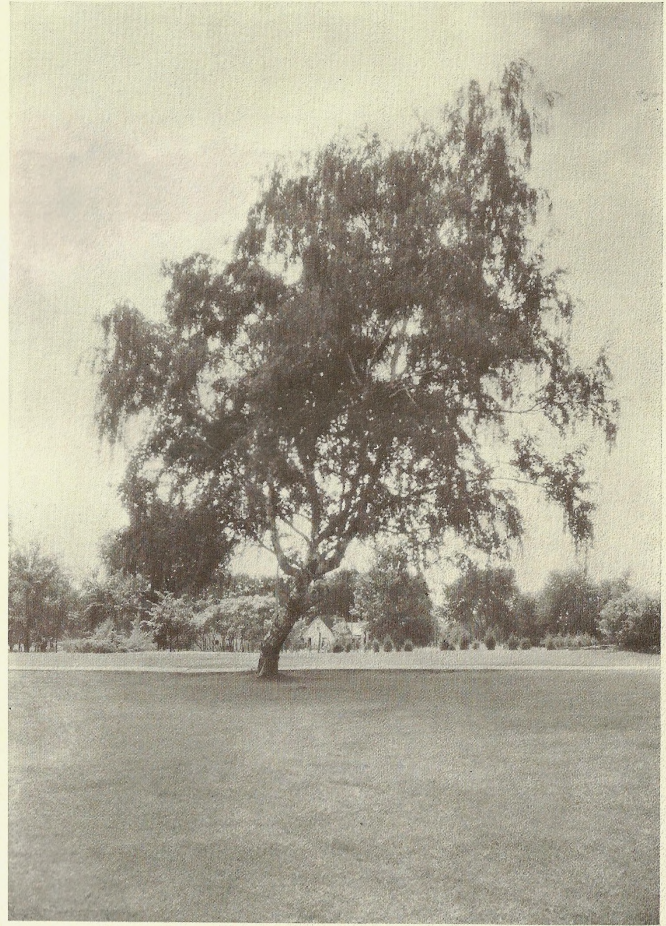
The Approach to Learning



Nature's Silhouetted Beauty



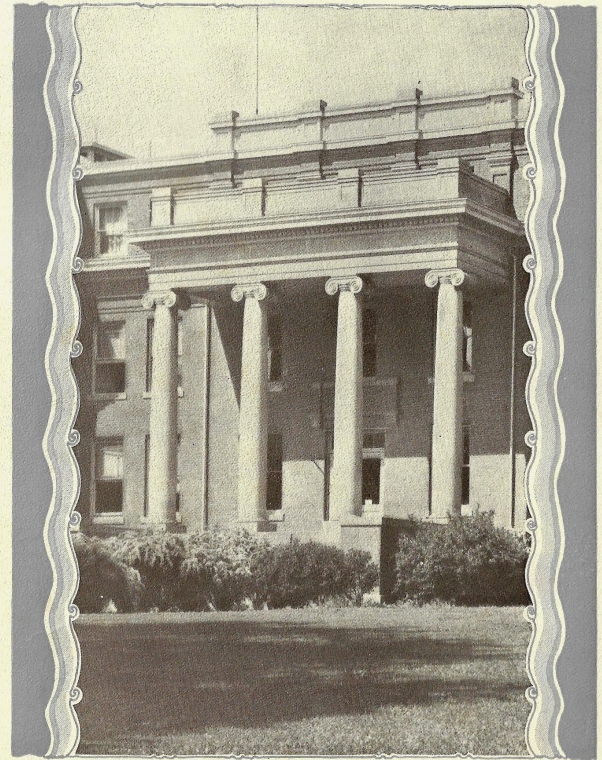
Where the Byways Meet



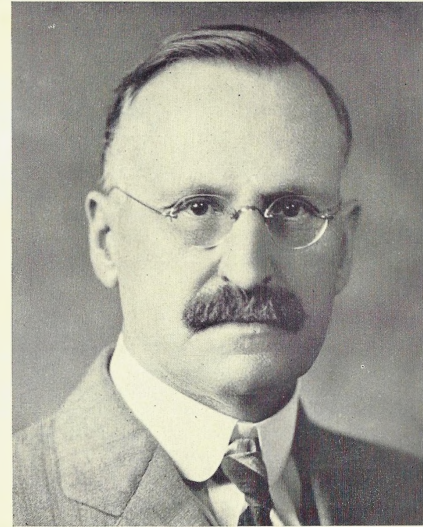
Memory's Monument



Ethereal Spring and Majestic Columns



THE SCHOOL



PRESIDENT E. J. GALE

“He has endeared himself to one and all because of the interest he has taken in every field of his work.”

“It is an easy matter to assume the position of president in an institution which is running smoothly and meets no obstacles. It is not so easy to take charge of an institution which is faced with difficulties. This has Dr. Gale done. He has worked hard, he has given his time and effort to find a satisfactory way in which to meet the situation. And he has found a way. In so doing he has shown exceptional ability, leadership, and integrity. The confidence of the students of Missouri Wesleyan in their President is unbounded. Their love for him is great.”



HON. H. F. LAWRENCE

President of the Executive Committee

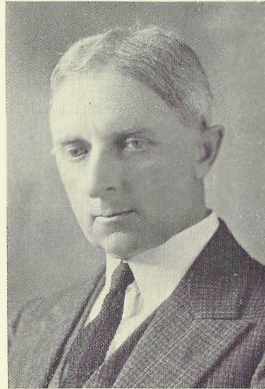
"As president of the committee, Mr. Lawrence has proved his ability as a leader."



ALICE BENTLEY

Secretary of the College

"As pleasant as helpful, as efficient as one could imagine. She is the ideal secretary."



JOSEPH H. DUSENBERRY

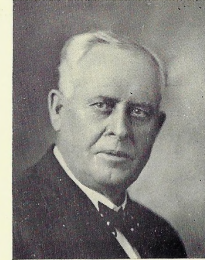
Business Manager of the College

"He deserves our unfailing gratitude in return for his earnest endeavors in tiding the affairs of our college."

Executive Committee

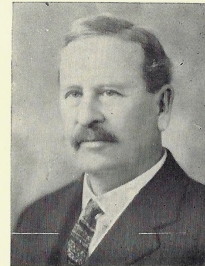
HON. FRANK B. KLEPPER

"For many years he has shown a marked interest in the welfare of Missouri Wesleyan."



MR. A. J. ALTHOUSE

"One who has been a generous supporter of Missouri Wesleyan."

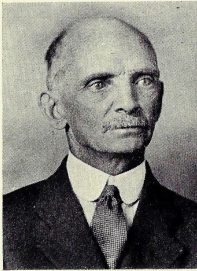


MR. C. P. DORSEY

"An efficient worker in regard to the tasks connected with our college."



Executive Committee



REV. J. J. COKELY

"A staunch booster of this institution."



DR. E. B. THOMPSON

"At his death, Missouri Wesleyan lost one of her greatest friends."

MR. G. A. SHEPHERD

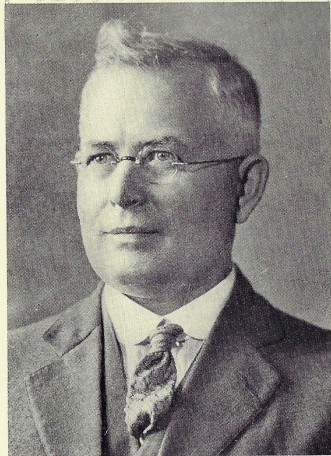
"A firm believer in the future success of our Alma Mater."

Twenty



Faculty

May your life
be that of
Paul - "that in all
things he might
have the pre-
eminence"
Chas. H. Law.



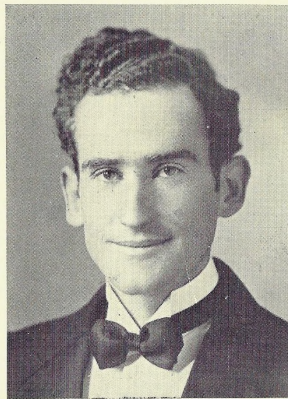
DEAN D. L. DALKE, A. B., A. M.
Dean of the College; Professor of Education
and Psychology.
"Loyal and true, loving and loved—our
Dean."

VERA HERRING
Dean of Women
"She believes in 'her girl'."



CHARLES H. LAW, A. B.; S. T. B.;
A. M.
Registrar; Professor of Religion and
Philosophy.
"His efforts spell proficiency."

LUTHER SWIFT, A. B.; MUS. B.;
Dean of Conservatory of Music.
"His music is a source of joy to
himself and his associates."



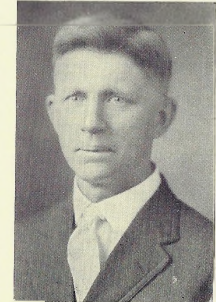
WILLIAM T. CLINE
A. B.; A. M.; Ph. B.;
Ph. D.; D. C. L.; Profes-
sor of History and Political
Science.

"His faith in humanity
has caused him to be loved
by all."



GRACE HENDERSON
Graduate of Curry School of
Expression. Head of Ex-
pression Department.

"Her interpretation of
life equals the beauty of
her work."



WILBUR F. NULL,
A. B.; A. M.; Professor of
Mathematics and English.

"Sometimes bothered with
aberrations—he thinks the
Owl Staff is growing better
every year."

ROBERT W. McLACHAN
B. S.; M. S.; Professor of Chemistry
"In Science we have progress."



R. H. BARKER
A. B., A. M.; Professor of Social Science
"He has that sociological outlook on life."

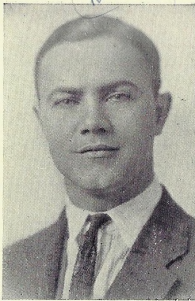


Don't forget your herbarium



CARRIE F. SHEPHERD
Librarian and Art Director.

"To be interested in people is to possess a full conception of life."



LESTER G. SLAYTON
A. B.; Professor of Biological Science.

"His earnest endeavor coupled with his pleasing personality has built up his department."



MAUDE GIBSON
A. B.; B. S.; M. A.; Professor of Education and Latin.

"By her steadfast efforts she makes learning the paramount issue."

BENJAMIN WILBERT FOLSOM
A. B.; Professor of Speech; Instructor of English.

"To have a successful debate season is his greatest ambition."

BLANCHE DEEM
Mus. B.; Instructor in Piano.

"She possesses beauty in character as well as in music."

LESLIE A. WILSON
A. B.; B. S.; M. D.; Professor of Bacteriology.

"Possesses a knowledge in his field greatly to be envied."



*Shall I re-
member you
"pencilholder"
"student" or
"it doesn't matter"
I'll just remember
you as a fine
girl and a fine
true friend.
May seasons
happiness
yours,
B. W. Folsom.*



BERTHA OAKES
B. S.; Professor of Home Economics.

"With her pleasing disposition her life shall be imbued with happiness."



HELEN GRIMES
Mus. B.; Head of Piano Department.

"Her musical ability is to be admired."



ANTONETTE WESTBORN
Ph. D.; Professor of Modern Languages.

"Language is the basic principal of understanding."

ELEANOR G. DOWNEY
A. B.; Instructor in Public School Music; Director of Ladies' Glee Club.

"Her sweet and unassuming air is worth more to her than all the riches in the world."

CARL JOHNSON
Instructor in Band Instruments; Director of Orchestra.

"Proficient in all phases of music."



Art Department



CARRIE F. SHEPHERD, *Instructor*

I AM ART

"Through me the eyes of unseeing Man are opened to the wonders about him.

Cradled in the arms of Nature, much have I learned of her. My inspiration comes from her deep breast and she ever replenishes me. It was she who made Truth known to me, and without Truth I am nothing.

I am the twin sister of Beauty, and wheresoever I go there also will she be found, for we are inseparable.

I walk hand in hand with Knowledge and Science who are my steadfast friends.

How gladly do I go into homes of Man where the door is left ajar.

I take to the city dweller the quiet country lanes at twilight; the sweet breath of cattle knee-deep in the shady pool; the fragrance of flowers along a lonely road; the sombrescence of dark forests bathed in incense of pine.

I take to the boy in the country the largeness of the city; its streets teeming with busy life; its moving lights—the lights of a great metropolis—and, perchance, the light of Opportunity for him. I show him the treasurers of great museums—my treasurers—and through me dreams of great things.

I take to the mountain dweller the surge of breakers, of the crescent sea-beach when the moon is new and thin. I take to his fireside the crash and heave of mighty rollers against rocks which have withstood the sea for centuries. Yes, I take ships, the symbol of travel, to him who is shut up in his mountain fastnesses.

I take to the fisherman's hut beside the sea, a glimpse of the shadows in the deep canyon; and the warmth and color of the sunlight far, far above, playing on the turrets and pinnacles of temples erected by God.

And into the childless, home, I take the shining faces of little children, to brighten lonely hours.

I am dependent upon the mastery of Man, and yet how completely I am Man's Master. 'I am of him, and he is of me.'

Through me shall the eyes of Man be opened to the Beauty which is ever present, and he knows it not because he sees it not until I translate it for him.

I stand for all that is Good and Beautiful and True— I AM ART."

Twenty-six

The Conservatory of Music



The conservatory of music has always been one of the strongest departments of Missouri Wesleyan College. Through the loyal devotion and unflinching leadership of the late H. C. Kelsey, it was gradually built up until it attained a most enviable reputation among the music schools of the state.

The college has recognized the great cultural value and the universal appeal of music. There is scarcely a social gathering of any sort that does not make a more or less extensive use of music on its programs. Obviously, then, an understanding of and a more thorough appreciation for the subject should not be confined to those who intend to make a business of teaching or performing.

Although a number of the Missouri Wesleyan music graduates are making high marks in their profession, the advantages of the conservatory are in no way restricted to those who wish to use their training in a professional way, or to those who are regularly enrolled in its various departments. Its influence is felt throughout the entire campus and community.

There are several organizations conducted under the auspices of the music school that afford valuable training for a great number of persons who are not making music one of their formal studies. Membership in these is prized as much as that in any of the other various teams of Missouri Wesleyan. The Glee Clubs especially have rather ambitious aspirations. In the preparation and presentation of programs for various concert tours taken throughout this conference, these groups have an excellent opportunity to become familiar with some of the best of music literature.

This year the piano department has bestowed the degree of Bachelor of Music upon one of its most talented students, Miss Eleanor G. Downey. She gave her recital in a most finished and charming manner.

Miss Vera Lou Saxer completed the regular four years course in piano and gave her graduation recital. The character of her program and the manner in which it was presented was sufficient proof of her ability and of the thoroughness of her preparation.

Notwithstanding the various occurrences that have impeded the work of the department, and the general unsettled conditions of the past year, there has been much accomplished of which the school can be justly proud.

Twenty-seven

Expression Department

MISS GRACE HENDERSON, *Instructor*

Post Graduate

RUTH PITTMAN

LORRAINE SHIRTS

Senior

VIRGINIA McCUE

Ada RUTH ALLEY

MURIEL WILLIAMS

Junior

IRENE MOON

Unclassified

FRANCES URBAN

HELEN JONES

IRENE KIMES

EILEEN KRANZ

JUNE CREASON

DAVID FOSTER

HADLEY CRAWFORD

LOMA RYAN

E. B. THOMPSON

LAURENE RUSSELL

HAZEL STEWARD

ALICE FOLSOM

PAGE PENDLETON

RUBY FOOR

BERT RUSHTON

JOSEPHINE HULETT

LUCILE KAY

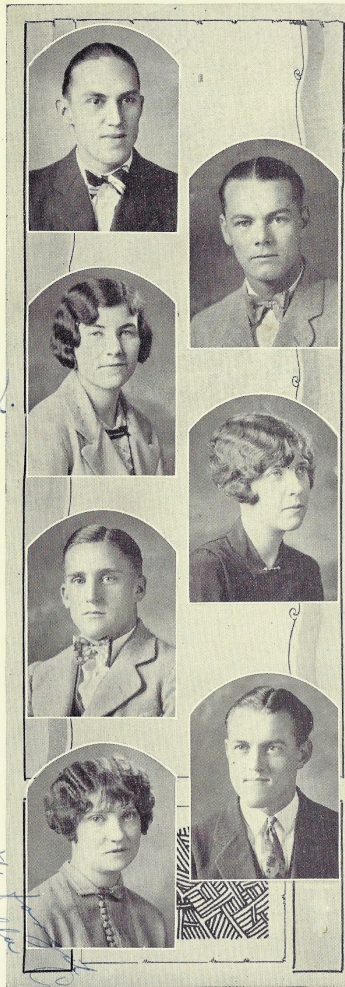
Expression is essential to life. The fullest life is the life in which the art of expression is the most highly developed. Those possessing the greatest ability to express themselves are artists. The purpose of the Expression Department is to develop this ability. A true artist uses for his philosophy of life the thought expressed in these lines,

*"Give to the world the best you have,
And the best will come back to you."*

Twenty-eight



Senior



PAUL HIBBS *Casper, Wyo.*
Editor-in-Chief, "Criterion"; Pres. Student Council; Pi Kappa Delta; Debate '27, '28; Forensic Club; Pres. Student Body.

"An acute intellect coupled with nobility of thought and tharacter."

CLARENCE BYERS *Cameron*
Pres. Senior Class.

"Helps to bring about new enthusiasm for good, clean, intellectual, decent, and daring living."

VIVIAN C. KUEBLER *Pomona, Kan.*
Aesthesian; Y. W. C. A.; Ladies' Glee Club.

"A reserved force which acts directly by presence and without means."

DOROTHY DUNCAN *Savannah*
Pres. Aesthesian Literary Society; Pres. Y. W. C. A.; Student Council; "Owl" Staff; "Criterion" Staff.

"Coy and sweet. Because of her existence the world is richer."

GOLDIE V. BOURRETTE *Maysville*
Adelphian; Pres. "W" Association; Pres. Beta Beta Beta; Football '24, '25, '26 '27 and Captain '27; Basket Ball '27, '28; Track '25, '26, '27.

"Possesses a wit and personality that cannot be resisted."

PAUL K. CRAWFORD *Cameron*
Pres. Pi Kappa Delta; Pres. Adelphian Literary Society, first semester; Alpha Psi Omega; Dramatic Club; Student Council; "Criterion" Staff; Forensic Club; Debate '25, '26, '27, '28.

"Gives to every activity an impetus."

STELLA LUELLA CROCKETT *Unioneville*
Aesthesian; Y. W. C. A.

"Plays her way into the hearts and friendship of her listeners."

Thirty

*I guess we
admitted the front
didn't see?
3rd wishes.
F. W. C. A.*

Handwritten notes and signatures at the bottom left of the page, including names like "Crawford" and "Duncan".



J. W. BIGGERSTAFF *Cameron*
Athletic Manager; Business Mgr Men's Glee Club; Adelphian; Dramatic Club; Alpha Psi Omega.

"Because of knowing him we have faith in youth."

HOMER OCKER *Cameron*
Adelphian; Pres. Theta Chi Delta; Alchemist Club; Vice-Pres. Senior Class; "Criterion" Staff.

"He's bonny, blooming, straight and tall."

GERTRUDE BUCK *Cameron*
Aesthesian.

"Has found herself and already knows values."

ALICE BENTLY *Watson*
French Club; Y. W. C. A.; Vice-Pres. Aesthesian Literary Society, second semester.

"Pretty and extremely capable."

ERNEST ROBINSON *Green City*
Track '27, '28; Men's Glee Club; Excelsior; Student Council.

"Frequently seen in the Dean's office."

STEPHEN H. SIMS *Lathrop*
Football '26, '27; Adelphian; Vice-Pres. Beta Beta Beta; Men's Glee Club; Business Manager, "Criterion".

"Pewee's shadow. He possesses much of that wonderful something called 'Friendship'."

EDNA POTTER *Cameron*
Ruthean.

"Pressing forward, never backward."

Thirty-one



PAGE R. PENDLETON *Marceline*
 Adelpbian; "W" Association; Football '25, '26, '27; Dramatic Club; Y. M. C. A.
 "Possesses a kind of handsomeness."



HAROLD KUEBLER *Panona, Kas.*
 President Excelsior Literary Society, first semester; President Men's Glee Club.
 "The answer to a maiden's dreams."



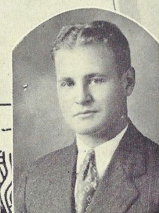
JULIA DIVEN *Cameron*
 "Criterion" Staff; Aesthesian; Y. W. C. A.
 "Woman is always a changeable and capricious thing."



LUCILLE KAY *Osborn*
 Ruthean; Dramatic Club; French Club.
 "Eyes and mouth that laugh together."



GEORGE E. CLINE *Cameron*
 "He is long for this world."



GEORGE B. REED *St. Joseph*
 Dramatic Club; Alpha Psi Omega; Excelsior.
 "The boy with the metropolitan air."



LETA HOBSON *Holt*
 Aesthesian; Y. W. C. A.; Dramatic Club.
 "The snappy little number frequently seen in the halls—that's hobby."

Thirty-two

*Order of Agayville products
 lot of nice people in
 town as a law firm
 the first to
 H. Kuebler*

The O.P.L. 1928



MAYNARD C. JONES *Chillicothe*
 Adelpbian; Grand Director, Alpha Psi Omega; Dramatic Club; Men's Glee Club; Tennis '27 '28.
 "Sees his Dawn at evening as well as morning."



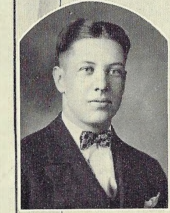
HARRY MORRIS *Kidder*
 Pres. Ministerial Alliance.
 "A judge or authority in matters of taste."



EDWARD KAGAY *Stewartsville*
 Excelsior; Men's Glee Club; Dramatic Club; Y. M. C. A.
 "The boy that Ford Hall made notorious."



RUTH DEEM *Brookfield*
 Aesthesian; Y. W. C. A.; French Club.
 "A thorough student who doesn't swallow everything her professors tell her, but who has ideas of her own."



FLOYD TODD *Cameron*
 "Quiet, unassuming and withal a good fellow."

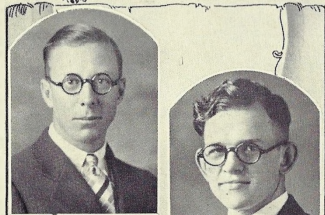


ROSS H. LANGFORD *Jamesport*
 Adelpbian.
 "Possesses the ability to deal with life."



R. LINN TERRY *Kidder*
 "The Galloping Ghost, but withal a good old scout."

Thirty-three



EMIL DIETRICH *Wyaconaa*
 Excelsior; Student Treasurer.
"Performs large tasks in a quiet way."



FLOYD E. KINNE *Cameron*
 Alchemist Club; Adelpian.
"Following in the successful chemical footsteps of his Professor brother."



RUTH PITTMAN *Maysville*
 Ruthean; Alpha Psi Omega.
"A thing of beauty is a joy forever."



DOLLYE GRAEFF *Osborn*
 Pres. Aesthesian Literary Society, first semester; Y. W. C. A.; "Criterion" Staff; Beta Beta Beta.
"Beautiful because incomprehensible."



OWEN KERR *Memphis*
 Y. M. C. A.; Ministerial Alliance; Forensic Club.
"When duty calls, he is never lacking in responsibility."



DAVID FOSTER *Cameron*
 Pres. Excelsior Literary Society, first semester; Beta Beta Beta; Alpha Psi Omega; Dramatic Club; Y. M. C. A.
"One of the friends who cares."



LEONA DEEM *Brookfield*
 Ruthean.
"Has week-end interests in Cameron."



BYRON A. WAGENKNECHT *Cameron*
 Ministerial Alliance; Y. M. C. A.; Beta Beta Beta.
"Helps lighten the burdens of others."

Thirty-four



Junior



ALVIN LEE MILLER *Plattsburg*
Adelphian; Football '27; Track '25, '26, '27; "W" Association; Beta Beta Beta; Pres. Junior Class.

"To possess a striking personality is to be rich in friends."

VERA LOU SAXER *Bethany*
Ruthean; Accompanist Men's Glee Club.

"Sways you with her music, captures you with her personality."

HELEN GILCHRIST *Cameron*
Ruthean, Pres. first semester; "Owl" Staff; Forensic Club; Debate '28; Pi Kappa Delta; "Owl Queen."

"Of sweet and unassuming mien."

PAUL C. KOCHAN *Maysville*
Adelphian; Editor-in-Chief of the "Owl"; Debate '26, '27, '28; Vice-Pres., Pi Kappa Delta; Forensic Club.

"As wise a bird as ever flew into the Fowler's snare."

CHARLES W. THOMAS *Cameron*
Adelphian, Vice-Pres. first semester; Football '27; "W" Association; Business Manager of the "Owl."

"A thinker, a good fellow and an athlete—a rare combination is Chalk."

EILEEN KRANZ *Loeide*
Aesthesian; Y. W. C. A.; Dramatic Club.

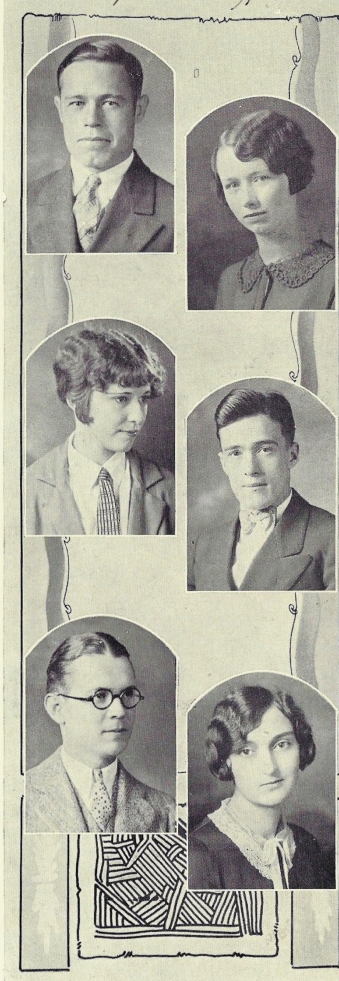
"One of those girls everyone admires."

Thirty-six

through high school at M. H. S. and into college together. My friends and I were never able to get a chance to see each other.

More interesting than knowing you - I hope you ever get a chance to see each other.

Mildred: I know you are trying and anxious in your beliefs. I am not well acquainted with you but have heard nothing about you but what you are complimentary. Best wishes Mildred.



LAWRENCE R. METZ *Braymer*
Excelsior; Alchemist; "Criterion" staff; Football '25, '26, '27, Cap't-Elect for '28; Track '26, '27; "W" Association.

"May he lead us on to victory!"

CLAIRE VAN HOOZER *Martinsville*
Aesthesian; Business Manager, Ladies' Glee Club; Y. W. C. A.; Beta Beta Beta.

"Her quiet nature seemed to be Tuned to each season's harmony."

BERNICE RYBOLT *Grant City*
Aesthesian; Y. W. C. A.

"Her dignity enhances her womanly charms."

DALE WYLIE *Cameron*
Adelphian; Beta Beta Beta; Student Council; "W" Association; Track '26, '27, Cap't-Elect '28.

"All mankind loves a lover."

ROY HOLLENBECK *Shelbyville*
Adelphian; Y. M. C. A.; "Owl" Staff.

"To have his friendship is an asset."

HAZEL STEWARD *Macon*
Aesthesian; Y. W. C. A.; Dramatic Club; Beta Beta Beta; "Owl" Staff.

"Efficient, capable, resourceful, willing."

Thirty-seven



LEON WALKER *Green City*
Adelphian; Y. M. C. A.; Dramatic Club; Alpha Psi Omega.

"He speaks, behaves, and acts as he should."

MARY HARTSOOK *Cameron*
Aesthesian; Ladies' Glee Club; Ladies' Quartette.

"Thy music hath charms as doth thyself."

RUBY FOOR *Meadville*
Aesthesian; Y. W. C. A.; Alchemist Club; Beta Beta Beta; Theta Chi Delta.

"A daughter of the gods, divinely tall and most divinely fair."

RICHARD O. KAY *Osborn*
Adelphian; Dramatic Club; Alchemist Club; Y. M. C. A.; "Owl" Staff.

"If Prof. doesn't know, ask me."
Frenchie: Richard O. Kay

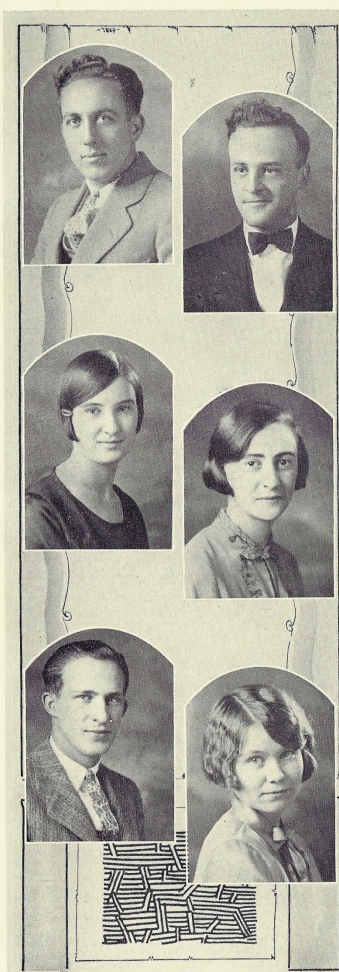
CHARLES S. CAMPBELL *Winston*
Excelsior; Y. M. C. A.; Ministerial Association.

"A brave of our tribe who has run the gauntlet of matrimony."

VILLA E. FENDER *Jamesport*
Ruthean; Y. W. C. A.

"The deepest rivers make the least sound."
we seemed to have a time with me in French and Thirty-eight Botany. Villa Fender

I'm worried with a fellow from Mequon for two years, so probably I can write in your book "Lew"



LEWIS SHULTZ *Spickard*
Excelsior; Y. M. C. A.; Glee Club; "W" Association; Football '26, '27; Track '27.

"I choose to leave my past as it is and let my future come as it will."

FRANK E. JACOBS *Grant City*
Excelsior; Y. M. C. A.; Pres. Ministerial Association.

"Nature made him what he is and never made another."

GERTHA STARK *Laclede*
Aesthesian; Y. W. C. A.; Alchemist Club; Theta Chi Delta.

"She possesses that intelligence of which we are all envious."

MARJORIE MILSTEAD *Kidder*
Aesthesian; Ladies' Glee Club.

"Physically, she's a blonde, but a mental brunette."

CLEO E. O. HARDEN *Stanberry*
Excelsior; Men's Glee Club; Vice-Pres. Alchemist Club; Theta Chi Delta; Beta Beta Beta.

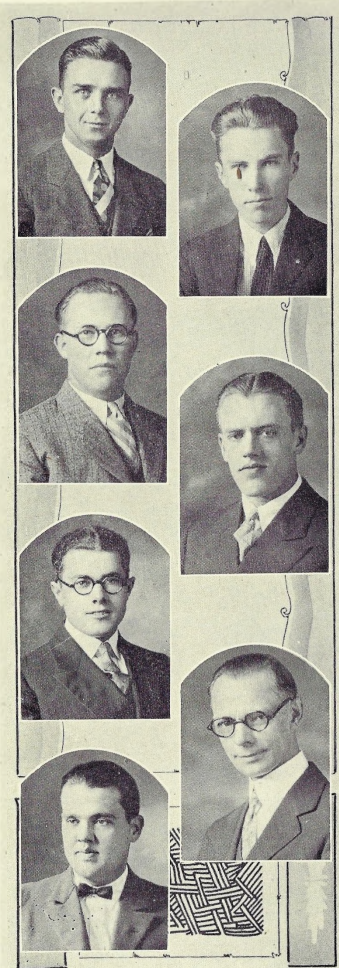
"For him, ready speech is no lost art."

MARTHA KELTNER *Cameron*
Aesthesian.

"Can we not do our part and not be heard?"

Thirty-nine

Will
 Mildred
 we want show
 like together.
 wondering you have a
 you go through the
 school you
 Bert
 may
 with
 at
 paper.



BERT RUSHTON *Princeton*
 Adelphian, President second semester;
 Vice-President Junior Class; Y. M. C.
 A.; Dramatic Club; Beta Beta Beta;
 "W" Association; Football '26, '27.

*"May he successfully reach the goal of
 life's aim
 As he always does in a football game."*

CLARENCE H. STEVENSON *Savannah*
 Excelsior; Alchemist Club; Theta Chi
 Delta.

"Essentially studious and steady."

C. H. SAUCEMAN, Jr. *Mound City*
 Excelsior; Y. M. C. A.; Alpha Psi
 Omega.

*"Apart from any moral evil, every in-
 timacy is a danger of another blow to the
 heart."*

NELSON MILLER *Mound City*
 Excelsior; Alchemist Club; Y. M. C.
 A.

*"A happy man is ever welcome in the
 crowd."*

HARRY HUTTON *Cameron*
 Adelphian; Vice-Pres. Y. M. C. A.;
 Alchemist Club.

*"Don't judge him by the noise he
 makes."*

RALPH M. MCBRIDE *Marshallton, Iowa*
 Excelsior; Pres. Y. M. C. A.; Min-
 isterial Alliance; Student Council; Men's
 Glee Club; Pres. Junior Class, second
 semester.

*"A man of culture is a true apostle of
 equality."*

HARRY LONG *Hamilton*
 Excelsior; Y. M. C. A.; Men's Glee
 Club.

*"His hobby is learning to be a second
 Kreidler."*



Sophomore

Remember me
as one of you
M. W. C. A. friends.
Best of luck
and success.

R. Todd



TODD
GREEN
DUSE
CAMPBELL
WOOD

HOGAN
WELSH
MCCLURE
LUTHER
WILLIAMS

MERRITT
HALL
FARMER
THOMPSON
PORTER

CASEY
DAYHOFF
BECKWITH
WRIGHT
MILLER

W. C. A. - M. W. C. A.
M. W. C. A. - M. W. C. A.
M. W. C. A. - M. W. C. A.
M. W. C. A. - M. W. C. A.
M. W. C. A. - M. W. C. A.
M. W. C. A. - M. W. C. A.
M. W. C. A. - M. W. C. A.
M. W. C. A. - M. W. C. A.
M. W. C. A. - M. W. C. A.
M. W. C. A. - M. W. C. A.

any interview
with the class and
with the class and
with the class and
with the class and
with the class and
with the class and
with the class and
with the class and
with the class and
with the class and

ROY E. TODD *Cameron*
Adelphian; Alchemist Club; Student
Council; Pres. Sophomore Class, first semes-
ter; "Owl" Staff; Editor-Elect, the "Owl".
"Li'l Boy."

KATHLEEN HOGAN *Cameron*
Ruthean; Dramatic Club; "Owl" Staff.
"Just Like a Butterfly."

MABLE D. MERRITT *Wray, Colorado*
Aesthesian.
"Short and Sweet."

HAROLD V. CASEY *Cameron*
Student Council; Cheer Leader.
"Pleasing and Efficient."

EDITH GREEN *Osborn*
"One O'clock Baby."

HERBERT H. WELSH *Brookfield*
Excelsior; Y. M. C. A.
"Alice, Where Art Thou?"

ELTON HALL *Lathrop*
Excelsior.
"I'm Learning Now."

LOIS DAYHOFF *Hamilton*
Ruthean.
"Dreaming and Wondering."

EARL C. DUSE *Mayssville*
Excelsior; Football '26, '27; Basket Ball
'27, '28; Track '27; "W" Association;
Mens' Glee Club.
"Look Who's Here."

ALICE A. MCCLURE *Weatherby*
Ruthean; Ladies' Glee Club.
"Me and the Boy Friend."

GRACE FARMER *Cameron*
Ruthean; Dramatic Club.
"Five Feet Two, Eyes of Blue."

DEWITT BECKWITH *Wheeling*
Excelsior; Men's Glee Club; Y. M. C.
A.; Dramatic Club; "Owl" Staff.
"Knife and Knifty."

DAWN CAMPBELL *Cameron*
Ruthean President, second semester;
Ladies' Glee Club; Literary Council.
"D'd d - darling."

LEROY LUTHER *Butte, Montana*
Adelphian; Student Council; Beta Beta
Beta; "Owl" Staff; Business Manager-elect,
the "Owl."
"Whose Izzy Is He?"

ERNEST B. THOMPSON *St. Joseph*
Alpha Psi Omega; Bus. Mgr. Dramatic
Club; Forensic Club; Debate '28; Pi Kappa
Delta.
"What a World This Would Be" With
out "Preacher."

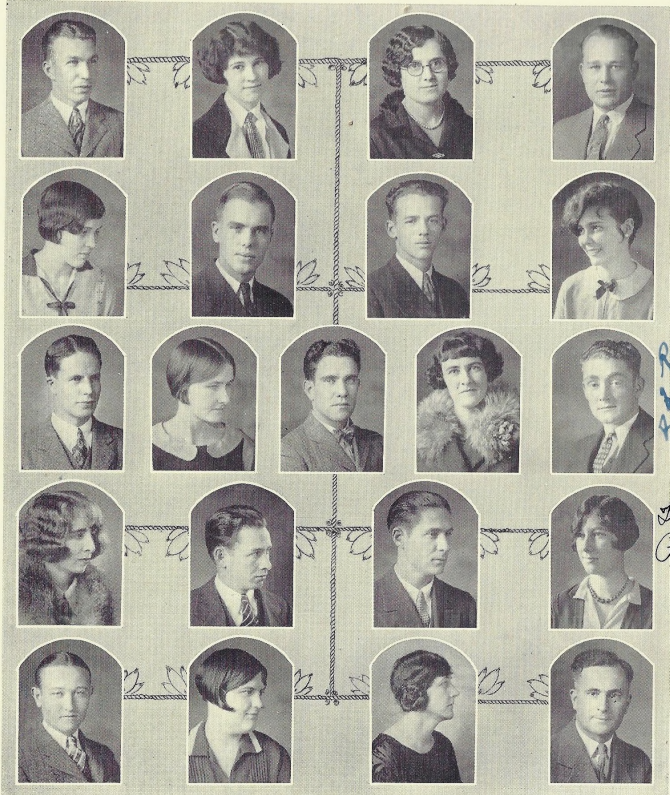
EVELYN WRIGHT *Cameron*
Aesthesian; Y. W. C. A.; Alchemist
Club; Student Council.
"Who Is Your Who?"

PAUL WOOD *Bethel*
Adelphian; Dramatic Club; Y. M. C. A.;
Men's Glee Club; Quartette.
"Laff It Off."

MURIEL WILLIAMS *Maitland*
Ruthean, Vice-Pres. first semester; Dra-
matic Club, Vice-Pres.; Alpha Psi Omega;
Forensic Club; Debate '28; Pi Kappa Delta.
"There's Everything Nice About You."

HAZEL PORTER *Osborn*
Ladies' Glee Club; Y. W. C. A.; Dra-
matic Club; Beta Beta Beta.
"Highways Are Happy Ways."

CLAUDE J. MILLER *Plattsburg*
Adelphian; Football '27; Track '27.
"Breezin' Along."



MINTER	BIRD	RYAN	MEEK
SHIRTS	CROY	CORNISH	DRUMM
TOURTELLOTE	COUCH	COOK	ANDERSON
TOOMAY	GROOM	McKEE	BURKETT
WADDILL	DEVALL	BEASON	SMITH

*Repeat me as one
to your many
friends. wishing
you success.
Red.*

*The terrible
Phy Ed instructor
who tried to
kill you.*

GENE MINTER Adelphian; Football Squad; Basket Ball '28; "W" Association. "Collegiate."	Spickard	FRED COOK Adelphian; "W" Association. "Crazy Words, Crazy Tune."	Maysville
MARIE BIRD Ruthean. "Happy as the Day Is Long."	Cameron	VELMA CLARK Aesthesian. "Looking at the World Through Rose-Colored Glasses."	Savannah
LOMA RYAN Ruthean; Alchemist Club. "Get Away, Old Man, Get Away."	Cameron	EDWARD ANDERSON Adelphian; Football '27; Basket Ball '27, '28, Cap't '28; "W" Association. "Six Feet of Papa."	Lucerne
WILLIAM K. MEEK Football '25, '26, '27; "W" Association. "Our Hero."	Jamesport	ZETTA TOOMAY Aesthesian; Y. W. C. A. "Me and My Shadow."	Bayner
LORRAINE SHIRTS Ruthean; Dramatic Club, President first semester; Alpha Psi Omega; Student Council; Pres. Sophomore Class; "Criterion" Staff; "Owl" Staff. "You're so Easy to Remember."	Cameron	MERLIN L. GROOM Excelsior, Vice-Pies.; Y. M. C. A.; Track '26, '27. "Old Pal."	Amity
HARVEY CROY Excelsior; Men's Glee Club; Quartette. "He's the Last Word."	Barnard	ERNEST M. McKEE Excelsior, Vice-Pres. first semester; Vice-Pres. Sophomore Class, first semester; Football squad; Basket Ball '26, '27, '28; "Criterion" Staff. "What Does It Matter."	Guilford
DAVID H. CORNISH Men's Glee Club. "This World Is Such a Lonely Place, I Gotta Get a Girl."	Oxborn	CLARA LILLIAN BURKETT Ruthean; Ladies' Glee Club. "Such Is Life."	Cameron
PEARL DRUMM Ruthean. "Nothing Else Matters Any More."	Hamilton	HAROLD H. WADDILL Adelphian; Men's Glee Club. "Every Sunday Afternoon."	Carrollton
MERRILL TOURTELLOTE Adelphian. "Way Down Home" "Where the Wild, Wild Flowers Grow."	Maitland	ELLA MARY DeVALL Ruthean; Y. W. C. A.; Ladies' Glee Club. "Oh, Katharina."	Stewartsville
LULA MAE COUCH Aesthesian; Y. W. C. A.; Ministerial Association; Forensic Club; Debate '28; Pi Kappa Delta. "I'll take Care of Your Cares."	Memphis	MRS. CLEO BEASON Casper, Wyoming "Out Where the West Begins."	Casper, Wyoming
		BENNET SMITH Y. M. C. A. "My Little Nest."	Cameron

Our Alma Mater!

Our Alma Mater!
How proud should we be of Thy labour of love—
Of the mysterious patterns in Life that you weave—
From the lives that are shining like silver and gold,
To give a fine lustre, when Thy work is unfurled.
Of lives, like the lily,— pure as the snow—
Whose beauty remains, and whose fragrance still lingers
In memories, entwined in that mysterious design.

Our Alma Mater!
How varied Thy pattern— what contrast of hue—
Beside the white lily, Thy rich crimson rose,
Whose brave self-reliance has aided its climb
To the heights where the timid, the dull, and the weak,
Can look up and wonder, or proudly admire
The success of another, whose labor began
At the foot of the pattern— both side by side.

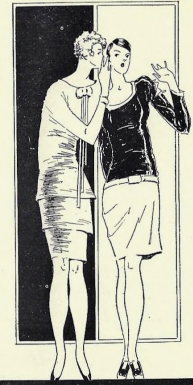
Our Alma Mater!
What secrets are Thine— What stories untold!
For back of the flowers that budded and bloomed,
Whose tendrils and roots have been nourished from Thee,
We trace out a picture ('tis woven so fine—
So many like it) that few people see
The white silver maple, with hearts interlaced,
Which still holds the secrets of love plighted here.

Our Alma Mater!
Thy pattern is made with a heaven of blue,
With Jupiter, Pleiades, Orion, and Mars
Shining in gold, mingling gleams of the dawn
Of a day that is waking from darkest despair;
Prophetic of days when Thy family is grown,
When the weight of Thy burden is dissolved by the light,
When glory and splendor shall follow the night.

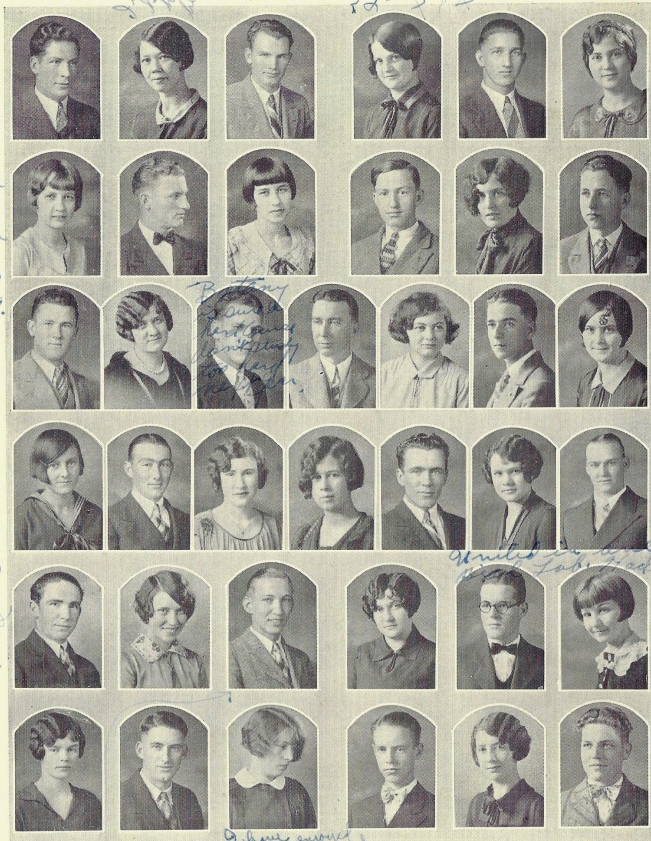
Our Alma Mater!
Often we would— if only we could—
Alter Thy pattern, or brighten some spots—!
We weave our life's record in the woof and the warp,
And change it, we can't— forever it stands.
We thank the good Weaver for hiding the bad,
That we may forget— 'tis better, by far—
And let us be proud of the glory we see
In Our Alma Mater!

—R. M. McBride.

Forty-six



Freshman



KANAN	URBAN	HODGE	FRIES	MORLAN	NORWINE
HULETTE	F. DOWNING	GROSS	GARNER	A. SHULTZ	WEST
F. WALKER	SMITH	COKELEY	MEDSKER	WARREN	PECK
MATTER	PULSE	CREASON	RILEY	MCDONALD	O. MILLER
STITH	BIGGERSTAFF	MCLEAN	RUSSELL	CRAWFORD	GRAEFF
STUCKER	LOWER	KIMES	A. MILLER	BECKWITH	ARNOLD

Forty-eight

A Ruthen sister and a friend May Ruthen go on next year and its business J.M. Hulet.

Please enjoyed. I'm glad you, that to think of not being here together. I'm glad to see you and I'm glad to see you. I'm glad to see you. I'm glad to see you.

I hope you may always with a heart full of love and joy. I hope you may always with a heart full of love and joy. I hope you may always with a heart full of love and joy.

Dear child and mother, I shall always remember you as one of my very best friends, you sure are a good student. Catherine S. Shoemaker

I don't care for my Am. I'll be as the best of the best of you. I'll be as the best of the best of you. I'll be as the best of the best of you.

I have enjoyed you very much. I have enjoyed you very much. I have enjoyed you very much. I have enjoyed you very much.

- | | | | |
|---|------------|---|----------------|
| ORIN H. KANAN
Adelphian; Alchemist Club; Football '27; Basket ball '28. | Cameron | IRENE MATTER
Aesthesian; Y. W. C. A.; Alchemist; Ladies' Glee Club; Forensic Club; Debate '28; Pi Kappa Delta. | Osborn |
| FRANCES URBAN
Ruthean; Y. W. C. A.; Dramatic Club; Alchemist Club; Ladies' Glee Club. | Cameron | AUDETH PULSE
Adelphian; Y. M. C. A.; Football squad. | LaHarpe, Kans. |
| ROBERT HODGE
Adelphian; Football '27. | Princeton | JUNE CREASON
Aesthesian; Y. W. C. A.; Dramatic Club. | Kingston |
| ELLA M. FRIES
Ruthean. | Maitland | HELEN RILEY
Ruthean; Forensic Club; Debate '28; Pi Kappa Delta. | Cameron |
| CURTIS D. MORLAN
Adelphian; Y. M. C. A. | Pollock | LOYD A. McDONALD
Adelphian; Basket Ball '28. | Princeton |
| THESIS NORWINE
Ruthean; Y. W. C. A.; Vice-Pres. Freshman Class; Ladies' Glee Club. | Santa Rosa | OPAL MILLER
Aesthesian. | Plattsburg |
| JOSEPHINE MARTHA HULETT
Ruthean; Y. W. C. A.; Dramatic Club. | Lathrop | JAMES SEELEY
Adelphian; Football '27. | Princeton |
| FRED DOWNING
Adelphian; Football '27. | Green City | "PETE" STITH
Adelphian; Y. M. C. A.; Football squad. | LaHarpe, Kans. |
| WILHELMINA GROSS
Aesthesian; Y. W. C. A.; Alchemist Club. | Osborn | MARY ELIZABETH BIGGERSTAFF
Ruthean; Pres. Dramatic Club; Ladies' Glee Club; "Criterion" Staff. | Cameron |
| GLYNN GARNER
Excelsior; Y. M. C. A. | Cameron | HAROLD S. MACLEAN
Adelphian; Alchemist; Y. M. C. A.; Men's Glee Club. | Stanberry |
| ALMA SHULTZ
Aesthesian; Y. W. C. A.; Ladies' Glee Club. | Spickard | LAUREN RUSSELL
Aesthesian; Y. W. C. A. | Ridgeway |
| J. ARTHUR WEST
Excelsior; Y. M. C. A.; Ministerial Association, Vice-Pres. second semester; Forensic Club; Debate '28; Pi Kappa Delta. | Grant City | HADLEY CRAWFORD
Excelsior; Y. M. C. A.; Dramatic Club; Alpha Psi Omega; Men's Glee Club. | Mercer |
| FRED WALKER
Adelphian; Football '27; "W" Association. | Lathrop | LELLA GRAEFF
Aesthesian; Y. W. C. A. | Osborn |
| MILDRED SMITH
Aesthesian. | Civil Bend | IDA N. STUCKER
Aesthesian. | Cameron |
| KENNETH COKELEY
Adelphian; Y. M. C. A.; Basket Ball '28. | Lathrop | HAROLD LOWER
Excelsior; Alchemist Club. | Mound City |
| FRANCIS D. MEDSKER
Excelsior; Y. M. C. A.; Ministerial Alliance. | Skidmore | FRANCES WARREN
Aesthesian; Y. W. C. A.; Forensic Club; Debate '28; Pi Kappa Delta. | Galt |
| FRANCES WARREN
Aesthesian; Y. W. C. A.; Forensic Club; Debate '28; Pi Kappa Delta. | Galt | F. HOWARD PECK
Y. M. C. A. | Cameron |
| F. HOWARD PECK
Y. M. C. A. | Cameron | CATHERINE SHOEMAKER
Aesthesian; Y. W. C. A.; Alchemist. | Winston |
| CATHERINE SHOEMAKER
Aesthesian; Y. W. C. A.; Alchemist. | Winston | IRENE KIMES
Ruthean; Y. W. C. A.; Dramatic Club. | Cameron |
| IRENE KIMES
Ruthean; Y. W. C. A.; Dramatic Club. | Cameron | ABRAM MILLER
Excelsior; Y. M. C. A. | Mound City |
| ABRAM MILLER
Excelsior; Y. M. C. A. | Mound City | J. KESTER ARNOLD
Adelphian; Alchemist Club. | Cameron |

Forty-nine
I shall always remember you as one of my very best friends, you sure are a good student. Catherine S. Shoemaker

one of the members
of the board of
Christian who sent
me this program
with all the help
of all the folks
in 1928

The Owl 1928

Remember
Alice Folsom
we all
together again
with you
I wish you
& the folks
Miss
lots of love
from
Virginia

a fellow
sufferer in F and
B. Henry also a
sister Ruthless.
Mildred Nichols.



our
zealous
is all mine
much
enjoyed

Remember
me as a
Frank Stewart
and friend
W. H.

As Betsey and
Mildred's companion
Wendy.

First Row: Foster, Folsom, Lockhart, Wolz, Hilters, Henderson. Second Row: Nichols, Smoot, O'Neal, King, Van Hoozer, W. Downing. Third Row: Williams, Donner, J. Campbell, Caldwell, Parker, McElwain. Fourth Row: Hallcroft, Morton, Cousins, Blackwood, McClure, Israel. Fifth Row: Barrows, Woody, Warner, Cathcart, Mullinix, Buzzard. Sixth Row: Fulkerson, Borchers, Campbell, Fox, Fellers, Stewart.

The Owl 1928

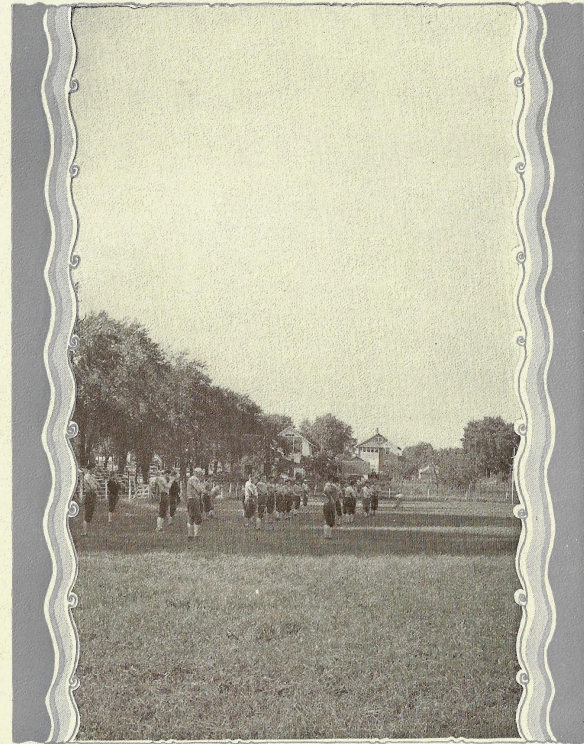
WESLEY FOSTER Adelphian; Men's Glee Club; Pres. Freshman Class, Second Semester.	Cameron	MARJORIE HALLCROFT Aesthesian.	Mercer
ALICE FOLSOM Ruthean; Y. W. C. A.; Dramatic Club.	Cameron	EARL MORTON Adelphian.	Cameron
FRANK LOCKHART Excelsior; Y. M. C. A.	Linneus	ROBY COUSINS Ruthean.	Cameron
FRANK WOLZ Y. W. C. A.	Spickard	DICK BLACKWOOD Adelphian; Y. M. C. A.; Alchemist; Vice-Pres. Freshman Class, First Semester.	Lathrop
CHARLES L. HILBERS Excelsior; Y. M. C. A.; Alchemist; Men's Glee Club.	Linneus	RHEVA MCCLURE Ruthean; Y. W. C. A.	Osborn
VIRGINIA HENDERSON Aesthesian; Y. W. C. A.	Lathrop	ERNEST ISRAEL Excelsior; Y. M. C. A.; Ministerial As- sociation.	Memphis
MILDRED NICHOLS Ruthean; Y. W. C. A.	Cameron	GEORGE BARROWS Y. M. C. A.	Jamesport
ELDON SMOOT Excelsior; Ministerial Association; Y. M. C. A.	Civil Bend	MILDRED WOODY Ruthean.	Pattonsburg
MARIE ANN O'NEAL Ruthean; Y. W. C. A.	Cameron	RAYMOND WARNER Adelphian; Men's Glee Club.	Cameron
DONALD KING Adelphian.	Cameron	FRANCES CATHCART Ruthean; Y. W. C. A.	Cameron
WILLA MAE VANHOOZER Aesthesian; Y. W. C. A.; Ladies' Glee Club.	Martinsville	HERDON MULLENIX Adelphian; Y. M. C. A.	Cameron
WAYNE C. DOWNING Y. M. C. A.; Football '27.	Green City	ESTER BUZZARD Ruthean.	Cameron
Z. REX WILLIAMS Adelphian; Men's Glee Club.	Maitland	LENA MARIE FULKERSON Ruthean; Y. W. C. A.	Galt
NINA DONNER Aesthesian.	Pattonsburg	HORACE BORCHERS Excelsior; Y. M. C. A.	Mound City
JAMES E. CAMPBELL Excelsior; Y. M. C. A.; Men's Glee Club.	Chillicothe	ALICE CAMPBELL Aesthesian; Ladies' Glee Club.	Cameron
ELENA CALLWELL Ruthean.	Cameron	ORAL L. FOX Excelsior; Y. M. C. A.; Forensic Club; Debate '28; Pi Kappa Delta.	Cameron
DONALD T. PARKER Adelphian; Basket Ball '28; "W" Associ- ation.	Winston	ROGER FELLERS Adelphian.	Cameron
MILDRED McELWAIN Ruthean; Y. W. C. A.	Maysville	ROBERT K. STEWART Excelsior; Y. M. C. A.; Football Squad; Men's Glee Club.	New Hampton

Remember
as a Freshman
classmate and
friend, I wish
you success
and happiness
Caldwell

Who's Who In M. W. C.

President of Student Body and Student Council	Paul Hibbs
Editor-in-Chief of Owl	Paul C. Kochan
Business Manager of Owl	Charles Thomas
Editor-in-Chief of Criterion	Paul Hibbs
Captain of Football Team	Goldie V. Bourrette
Captain of Basket Ball Team	Edward Anderson
Captain of Track Team	Dale Wylie
President of "W" Association	Goldie V. Bourrette
President of Men's Glee Club	Harold Kuebler
Business Manager of Men's Glee Club	J. W. Biggerstaff
President of Ladies' Glee Club	Hazel Porter
Business Manager of Ladies' Glee Club	Claire VanHoozer
President of Adelprians, first Semester	Paul Crawford
President of Adelprians, Second Semester	Bert Rushton
President of Rutheans, First Semester	Helen Gilchrist
President of Rutheans, Second Semester	Dawn Campbell
President of Excelsiors, First Semester	Harold Kuebler
President of Excelsiors, Second Semester	David Foster
President of Aesthesians, First Semester	Dollye Graeff
President of Aesthesians, Second Semester	Dorothy Duncan
President of Y. M. C. A.	Ralph McBride
President of Y. W. C. A.	Dorothy Duncan
President of Pi Kappa Delta	Paul K. Crawford
President of Beta Beta Beta	Goldie V. Bourrette
President of Theta Chi Delta	Homer Ocker
Grand Director of Alpha Psi Omega	Maynard C. Jones
President of Dramatic Club, First Semester	Lorraine Shirts
President of Dramatic Club, Second Semester	Elizabeth Biggerstaff
President of Ministerial Association	Frank Jacobs
President of Senior Class	Clarence Byers
President of Junior Class, First Semester	Alvin Miller
President of Junior Class, Second Semester	Ralph McBride
President of Sophomore Class, First Semester	Roy Todd
President of Sophomore Class, Second Semester	Lorraine Shirts
President of Freshman Class, First Semester	Orin Kanan
President of Freshman Class, Second Semester	Wesley Foster

Fifty-two



ATHLETICS

J. FOSTER POLAND, *Head Coach*

"This is 'Ing's' second year as head coach of the 'Owls', and his second time to produce a winning team. He is an old 'grad' and one who won all the honors that could be bestowed upon any athlete during his college career. He was All-State quarterback and was the best in the state.

"His ideal is, 'I have coached the team to my utmost ability. It is up to them to do their part. I expect them to play fair and to fight to the last minute.' "



LESTER G. SLAYTON, *Assistant Coach*

"Equal credit is due Prof. Slayton for our championship team this year. His full, rich experience and knowledge of athletics make him a valuable assistant. He participated in all sports while he was in college here, and won a never-to-be-forgotten reputation. His ideals of athletics are good, clean, and wholesome playing with the never-say-quit Wesleyan spirit."



Top Row: A. Miller, Ketcham, Walker, Parker, Minter, Anderson, McDonald; Second Row: McKee, Shultz, Simms, Thomas, Robinson, Downing, Cokely, Metz; Third Row: Pendleton, Rushton, Duse, Meek, Gilchrist, Bourrette, Kuebler, C. Miller, Kanan, Groom.

“W” Association

The “W” Association ranks among the oldest and most important organizations on the campus. This organization is reserved especially for those who have been officially and honorably awarded the “W”. In order to belong to this association one must have received a letter for participating in some form of intercollegiate athletic contest.

The purpose of the organization is to bind together those distinguished persons and to disseminate the ideals of clean sportsmanship and high moral character among others aspiring to gain letters in this branch of activity.

President Bourrette served successfully by holding meetings wherein plans were made to uphold the honor of the “W” in the future.

ACTIVE MEMBERS

Girls' BasketBall

Coach Lester Slayton
Thelma Farris, '27
Vivian Kuebler, '25, '27
Helen Gilchrist, '27

Track

Coach Foster Poland
Alvin Miller, '26, '27
Lawrence Metz, '26, '27
Dale Wylie, '26, '27
Goldie Bourrette, '25, '26, '27
Merlin Groom, '26, '27
Claude Miller, '27
Ernest Robinson, '27

Football

Coach J. Foster Poland
Coach Lester Slayton
Goldie Bourrette, '24, '25, '26, '27
Page Pendleton, '25, '26, '27
Earl Duse, '26, '27
Lewis Shultz, '26, '27
William Meek, '25, '26, '27
Lawrence Metz, '25, '26, '27
Bert Rushton, '26, '27
Stephen H. Sims, '26, '27
Charles Thomas, '27
Edward Anderson, '27
Finis Ketcham, '27
Claude Miller, '27
James Seeley, '27
Alvin Miller, '27
Robert Hodge, '27
Orin Kanan, '27
Fred Downing, '27
Fred Walker, '27
Wayne Downing, '27

Boys' Basket Ball

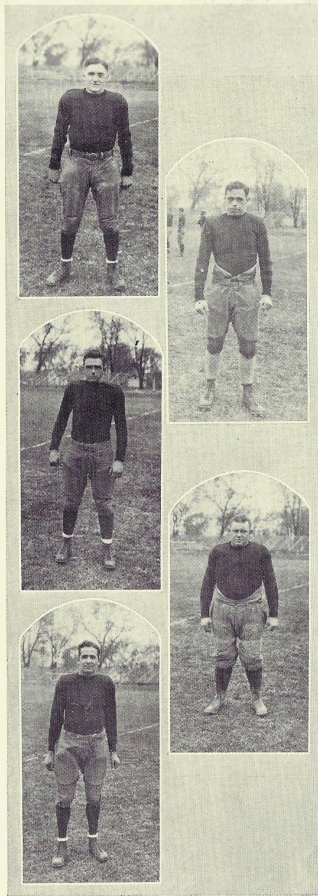
Coach J. Foster Poland
Goldie Bourrette, '27, '28
Ernest McKee, '26, '27, '28
Earl Duse, '27, '28
Edward Anderson, '27, '28
Finis Ketcham, '28
Lloyd McDonald, '28
Kenneth Cokely, '28
Gene Minter, '28
Orin Kanan, '28
Donald Parker, '28



Fifty-four



Football



GOLDIE "PEWEE" BOURRETTE

Quarterback. 3 years. All-State Captain and Quarterback. Senior.

"The lightning flash of the M. C. U. gridirons, and a potent factor in the ever victorious career of the Wesleyan eleven. He has been able to give his team and an all-star eleven the benefit of a rich experience and of fine generalship. He is a good passer, a good place kicker and a wonderful broken field runner."

LAWERENCE METZ, CAPTAIN-ELECT.

Fullback. 3 years. Junior.

"Metz is a consistent ground gainer, especially when only a few yards are needed for a first in ten or when a touchdown is at stake. We hope that Metz will lead next year's team to another M. C. U. championship."

BERT RUSHTON

End. 2 years. Junior.

"When it comes to getting down on punts and smashing the runner, Bert is in a class alone. He is one of Wesleyan's hardest tacklers."

STEPHEN H. SIMMS

Guard. 3 years. Senior.

"Nahe played his last game for Wesleyan this year. He handles his 225 pounds in a creditable manner. It is no wonder that Wesleyan had a powerful line, especially when Nahe was in it."

PAGE PENDLETON

Halfback. 3 years. Senior.

"Many of the M. C. U. teams felt the sting when Page drove through their lines for goodly gains. He played a marvelous last game against Jewell."

EARL DUSE

Halfback. 2 years. (All-state team 1927.) Sophomore.

"Duse has been named by several sport writers as 'Bourrette's running mate,' and he is. His long end runs and snagging of passes are thrills that come once in a life time."

CHARLES "CHALK" THOMAS

Center. One year. Junior.

"Always ready to hold his own in the coming onslaught of the enemy. He is a potent cog, the center of the line, both on offense and defense."

WILLIAM "BILL" MEEK

Tackle. 3 years. Sophomore.

"Big Bill Meek is everything a tackle should be. He weighs 225 pounds and has sufficient skill to use his weight. The Cadets at Lexington almost had to call out their whole Army in order to stop this giant."

FINIS KETCHAM

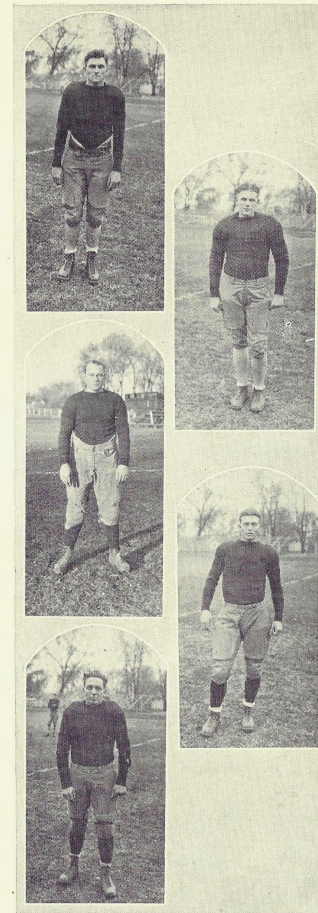
Guard. 1 year. Sophomore.

"The line always holds when Finis is in it. He knows how to use his hands on the defense and always opens a hole on the offense. He is big, clever, tricky, with a willing spirit and lots of courage."

LEWIS "LEW" SHULTZ

Guard. 2 years. Junior

"Even though 'Lew' is the lightest regular in the line, he is one of the best guards ever seen on the local field."





EDWARD ANDERSON

End. 1 year. Sophomore.

"Red is a good tackler; he never fails to get his man and when he snags passes, his long arms never fail him. He ought to make a good man next year."

CLAUDE MILLER

Center. 1 year. Sophomore.

"Claude is just what coaches look for in a good center; he has long legs and arms and a good head. His passes are accurate and to the mark. We hope he will be even better next year."

JAMES "JIM" SEELEY

Tackle and halfback. 1 year. Freshman.

"As a tackle Jim is superb, but as a halfback he is even better. He will be a main cog in the Owl machine next year."

ALVIN MILLER

Fullback. 1 year. Junior.

"Alvin is an especially good defensive back. He never lets an opportunity to intercept a pass slip by. He is aggressive and shifty when carrying the ball."

ROBERT HODGE

End. 1 year. Freshman.

"Hodge is everything an end should be; he can tackle, use his hands on the defense; and snag passes. He caught the pass that scored the first touchdown against Jewell."

ORIN KANAN

Halfback. 1 year. Freshman.

"Kanan is a good end runner, and when it comes to securing passes he is on the spot and never misses. He ought to tear 'em up next year."

FRED DOWNING

Tackle. 1 year. Freshman.

"One of Wesleyan's line warriors who wouldn't let a man get by if it cost his last ounce of energy. He will be a strong cog in the Wesleyan team next year."

FRED WALKER

Halfback. 1 year. Freshman.

"Have you ever heard of Ralph Walker of the 'Big Red Team'? If you have, you have heard just half of the story, because his cousin, Fred, is his equal. Great things are expected of our Walker."

WAYNE DOWNING

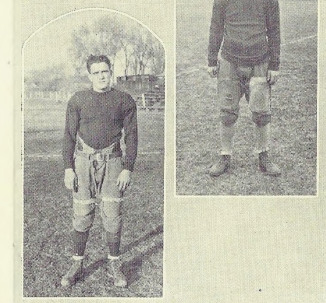
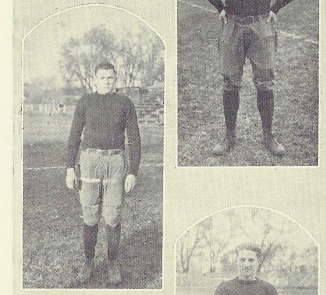
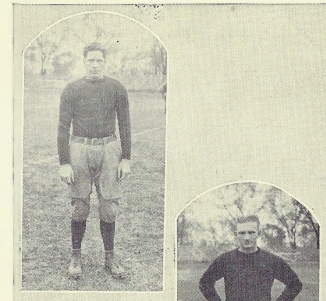
End. 1 year. Freshman.

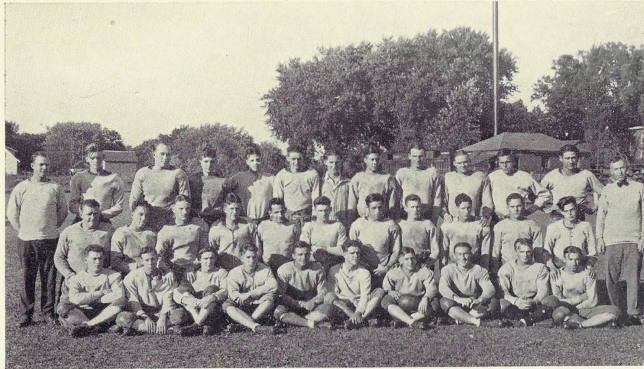
"Wayne has a reputation of being a wicked spiker, and he is. He never lets a man get around his end."

FRED COOK

Halfback and End. 1 year. Sophomore.

"Cook is a consistent worker and is always ready to give his best for the team. He is a fast end and an excellent ball-lugger."





Top Row: Assistant Coach Slayton, Stewart, Meek, Thompson, Ketcham, Anderson, W. Downing, C. Miller, Hodge, Seeley, Croy, McKee, Coach Poland; *Second Row:* Sims, Shultz, F. Downing, Thomas, Pendleton, Duse, Metz, Walker, Kanan, Cokely, King; *Third Row:* Hatton, Dietrich, Stith, Minter, Rushton, Cook, Cap't Bourrette, Pulse, Hall, A. Miller.

The Football Season of 1927

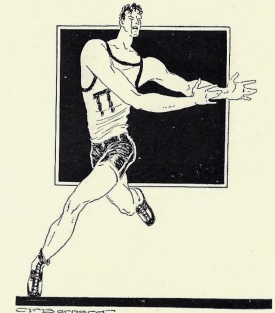
Date	Place	Opponent	M. W. C.	Opponents
Sept. 30	Cameron	Chillicothe Business College	19	13
Oct. 7	Springfield	Drury	14	7
Oct. 21	Canton	Culver-Stockton	46	6
Oct. 18	Lexington	Wentworth Military Academy	14	6
Nov. 4	Cameron	Tarkio	16	0
Nov. 11	Warrenton	Central Wesleyan	12	0
Nov. 24	Cameron	William Jewell	13	0
		Total	134	32

Again the "Owls" won the championship of the Missouri College Union. They were deserving of the honor. Although this honor is shared with Missouri Valley College, the "Owls" claim equal superiority in the conference.

The thirty undaunted players who accomplished this task had everything a team should have: weight, power, speed, endurance, and a varied attack.

The Turkey-Day gridiron classic was a thrill for Wesleyan and a tragedy for Jewell, the determined "Big Red Team" having been outplayed in every phase of this game, which was witnessed by five thousand interested spectators. Captain Bourette played this, his last game for Wesleyan, in a brilliant manner. His flashy running and accurate passing were some of the reasons for the defeat of Jewell.

Sixty



Basket Ball



CAPTAIN EDWARD "RED" ANDERSON
Guard and Forward. 2 years. Sophomore.

"Captain Anderson led his basketeers through an interesting and enjoyable season. 'Red' fought hard for Wesleyan, and he will be remembered as one of the best basket-
cer leaders the 'Owls' ever had."

ERNEST "MAC" MCKEE

Center. 3 years. Junior.

"No center in the Missouri College Union was able to out jump 'Mac' on the tip-off. His height makes him a valuable man, especially when it comes to tossing the ball through the loop on a set-up, or even when he shoots from the center of the court."

GOLDIE "PEWEE" BOURRETTE

Forward. 2 years. Senior.

"Tallness counts a great deal in basket ball, but not half so much as does 'shiftiness and evit' such as 'Pewee' possesses. His flashy and accurate playing has won for him honor among his team-mates."

FINIS KETCHAM

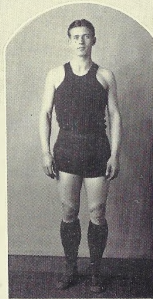
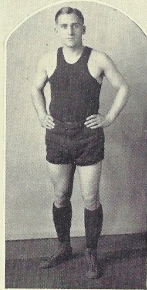
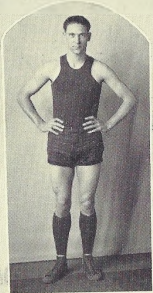
Guard. 1 year. Junior.

"Finis is one of Wesleyan's stellar guards. His constant fighting to protect the 'Owls' goal, his long shots that hit the mark, and his excellent team-work have won for him a place of distinction."

EARL DUSE

Guard and Forward. 2 years. Sophomore.

"Duse is one of the few players who can play two positions and plays them well. He is active and accurate in getting the ball from the back-board and returning it to his mates. Long shots are his specialties."



KENNETH COKELY

Forward. 1 year. Freshman.

"'Coke' has the rare ability to surprise his opponents by tossing the ball through the loop at the most unexpected moments."

GENE MINTER

Forward. 1 year. Junior.

"Gene is one of those forwards who can really play team-work. He passes accurately and swiftly. He has prepared himself to wear the 'W'."

ORIN KANAN

Guard. 1 year. Freshman.

"Orin is one of those guards who is fast and tricky enough to keep goals from being made. He played well during the season."

DONALD PARKER

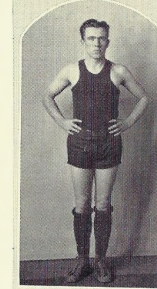
Forward. 1 year. Freshman.

"Donald is one of those cagers from Winston, Mo., developed under 'Don' Miller, a former Wesleyanite. He is a reliable and consistent worker; one of those forwards who knows what to do at the right time."

LYOYD McDONALD

Guard. 1 year. Freshman.

"McDonald proved himself to be a real guard. He is fast on his feet, handles the ball with agility, and plays skilled team-work."



Basket Ball 1927-28

Opposition	Place	M. W. C.	Opponents
Chillicothe Business College	Chillicothe	13	25
St. Joseph Junior College	St. Joseph	20	26
William Jewell	Liberty	27	50
Central Wesleyan	Cameron	16	28
Tarkio	Tarkio	35	36
Missouri Valley	Cameron	53	46
Drury	Cameron	22	36
Missouri Valley	Marshall	17	58
Central	Fayette	24	48
Westminster	Fulton	28	50
Central	Cameron	22	73
Westminster	Cameron	18	53
Westminster	Cameron	22	61
William Jewell	Cameron	42	58

The fact that the "Owls" took the short end of the score in many of the games does not discredit them from ranking as a good team in our estimation. There was not an individual player who did not show superior qualities.

1927 Tennis

In past years, the athletics at Missouri Wesleyan were limited to a few major sports such as football, basketball, track, etc.; but in more recent years, tennis has come to the front and now plays a very important part in the activities of the college.

The "Red" and "Black" tennis maulers contended with Jewell at Liberty in their first match of the season. Wesleyan won the doubles after breaking even in the singles. Russell of Wesleyan defeated Doerr 6-4, 6-3; House of Jewell won from Jones 2-6, 8-6, 6-3. Russell and Jones staged a come back to defeat House and Kiger in the doubles 6-2, 0-6, 8-6.

In the triangular meet between Tarkio, Maryville and Wesleyan, which was staged in the Goodrich Gymnasium due to rain, Wesleyan defeated Tarkio, but was afterward defeated by Maryville.

At the state meet held at Tarkio, Wesleyan fought a good fight only to be defeated by Westminster.

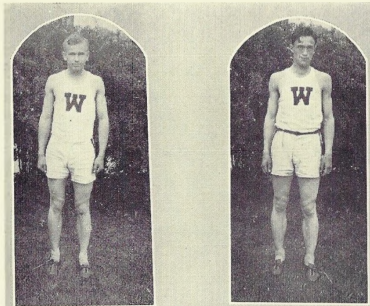
The honor of these brilliant contests goes to Carroll Russell and Maynard Jones, the two who did most of the playing for Wesleyan.

During 1928 Maynard Jones and Dewitt Beckwith were the net stars and were quite successful.

Sixty-four



Track



CAPTAIN VICTOR "VIC" COY

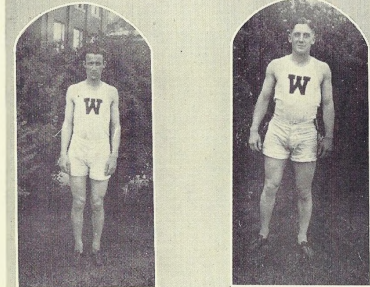
100 yd. dash; 220 yd. dash; 440 yd. dash; half-mile relay; hurdles; high jump; mile relay. 4 years.

"Captain Coy is one of the fastest dash men ever seen on the Wesleyan cinder path. He equalled 'Jim' Shultz's record in the hundred yard dash. Many times he has had the honor of being high point man."

DALE WYLIE, CAPTAIN-ELECT

Mile run; half-mile relay; mile relay. 2 years.

"One of the best half-milers in the Missouri College Union. He won points at every meet this year. We expect him to show his 'stuff' next year."



ERNEST "IKE" ROBINSON

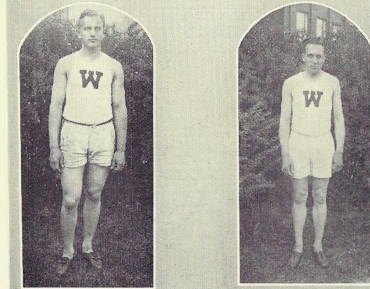
440 yd. dash; mile relay; half-mile relay. 1 year.

"A consistent worker and a brilliant performer."

GOLDIE "PEWEE" BOURETTE

100 yd. dash; 220 yd. dash; half-mile relay; low hurdles; broad jump. 3 years.

"He steps over the low hurdles just as if they weren't there. He won't broad jump; he just simply flies."



CARROL "ZIP" HENDERSON

Discus; pole vault; 220 yd. dash; half-mile relay; mile relay. 3 years.

"Zip" is a skilled performer in both track and field events."

LEWIS "LEW" SHULTZ

220 yd. dash; 100 yd. dash; half-mile relay; high jump. 1 year.

"Lew" has the qualities that will enable him to become 'Jim Shultz' the second. He is an excellent sprinter and a versatile high jumper."

MERLIN GROOM

Half-mile relay; mile relay; high hurdles; high jump; broad jump. 2 years.

"An excellent high jumper and a good relay man. He has two more years in which to show his versatility as a high jumper."

LAWRENCE METZ

440 yd. dash; mile relay; discus; shot put. 2 years.

"Wesleyan's stellar discus thrower. Metz held records in high school and is endeavoring to make new ones while in college."

CLAUDE MILLER

Mile run; half-mile relay; mile relay; high jump. 1 year.

"His long, consistent stride eats up the mile with ease. He has three more years to improve and to wear the black and red 'W'."

ALVIN MILLER

Mile run; two-mile run; relays. 2 years.

"He has the wind of a grey-hound and the endurance of a race horse. He conquers the two mile with ease."

EARL DUSE

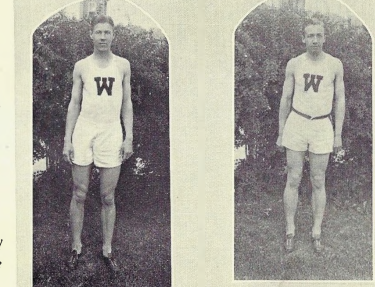
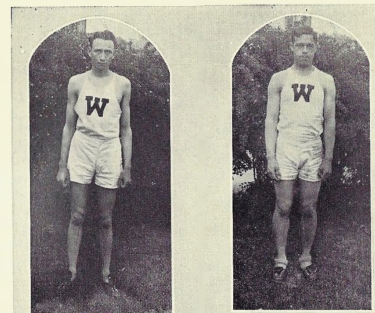
100 yd. dash; 220 yd. dash; broad jump; half-mile relay. 1 year.

"A stellar track man from Maysville High School. His first year's work on the Wesleyan cinder path has proved his worth."

PAUL IMES

440 yd. dash; half-mile run; half-mile relay; mile relay. 4 years.

"Paul has one of the best and most accurate strides ever seen on an M. C. U. cinder track. His equal for the coming years will be difficult to find."



1927 Track

Captain "Vic" Coy led his tracksters through a very successful season in 1927. Coy was the outstanding man of the team and of the Missouri College Union at large.

Four men from Wesleyan joined with men of other colleges of the M. C. U. in a meet with Missouri University at Columbia. Wylie captured second in the mile.

On April 18, Wesleyan met the Wentworth "Dragons" and lost—66 to 45. Wesleyan captured four firsts to Wentworth's seven. Wylie was first in the mile, Coy first in the high hurdles, Metz first in shot and discus. Barnes was the high scorer for the Cadets with 13 points.

The annual inter-class meet was staged April 26. The Seniors were dethroned by the Sophomores by a margin of 1-2 point. It may be said that much head work was used, especially by the lower classes. Points were: Sophomores, 61; Seniors, 60 1-2; Freshmen, 27; Juniors, 24 1-2.

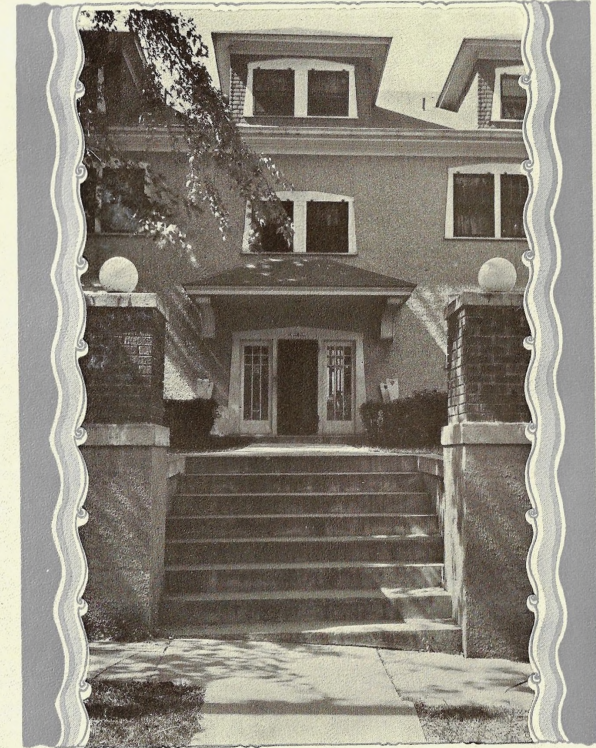
April 29, Wesleyan defeated "Bill" Jewell at Jewell—77 1-2 to 38 1-2. Each team scored seven firsts, but Wesleyan showed superiority upon the track. Coy was high point man with three firsts and one second.

Wesleyan won the meet here with Maryville and Tarkio with 82 points. Maryville was second with 39 points, and Tarkio third with 23 points. Coy was high point man with 18 points.

The State Meet of the M. C. U. was held at Tarkio. The Westminster Blue Jays won, scoring 66 1-3 points. Central was second with 35 1-3 points. Missouri Wesleyan was third with 20 points. Honors won by Wesleyan were: Captain Coy, third in the 100 yard dash, second in the high hurdles and fourth in the 220 yard dash; Groom third in the high hurdles; Bourrette, second in the 220 low hurdles; Wylie and C. Miller second and third in the mile run; A. Miller, fourth in the two mile run; the Mile Relay Team, second.

The last meet of the season was with the Haskell Indians at Lawrence, Kansas. The Indians were superior in the distance runs, and the "Owls" led in the sprints. Bourrette won the low hurdles and broad jump. Metz won the discus throw. Coy was high point man with three firsts.

Many of Missouri Wesleyan's track records and honors were upheld by this year's team. With Captain-Elect Wylie and seven letter men back next year, Wesleyan should have a fine season in 1928.



FEATURE



Queens

ya
s

*The Owl Queen was elected by the
Student Body of Missouri Wesleyan
College.*

*The Beauties were selected by Karl
Fitzer, head of the Art Department of
Burger-Baird Engraving Company.*



HELEN GILCHRIST
Owl Queen, 1928

Photo by

*"Once a Ruthless, Always
a Ruthless"
May you always be
Happy
Helen.*



Ruth Pittman

Handwritten notes in cursive script, including the name 'Ruth' and other illegible text.



Dollye Graeff



Dawn Campbell



Virginia Henderson



School Life

Popularity



Helen Gilchrist



Paul Hibbs



Beauty and the --



Chief Cooks and Bottle-washers



Nature's Assistant



The Eyes have it.



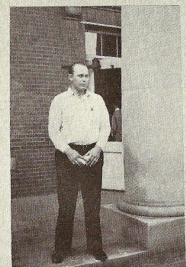
Good Housekeeping



Les Hommes Savants



One of Those Cases



Dignity Personified.



The Long and Short of "It".



A Frigid Entrance.



Representatives of Ford Hall.



Jack and Lir.



A Cow and Two ?



Happiness Supreme.



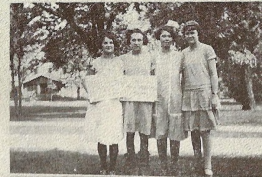
Three Fair Damsels.



The Speed Demon.



Caught !!!



Being a Freshman



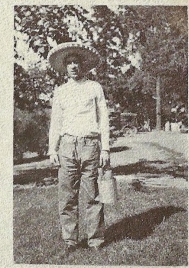
Lillies of the Campus.



Flower of the Campus



U and Me, Too



A Father's Pride



Red Hot Papa!



Generosity Prevails



The Campus Flirt



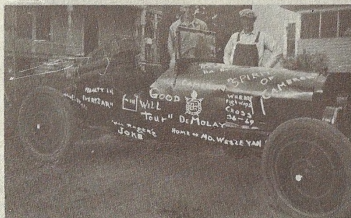
Just Lester



Whoa, there



A budding tree



Modern Crusaders



The kind that men
of keen judgment
become wedded to.

Time Will Tell



Careful, Now!



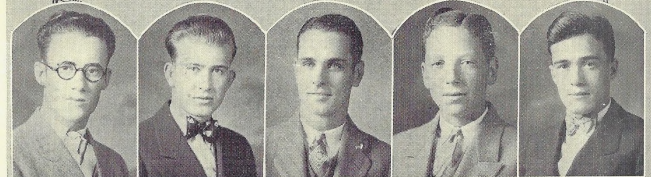
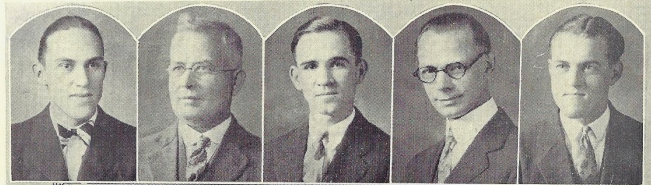
99 45-100% Pure?



Students Friend



ORGANIZATIONS

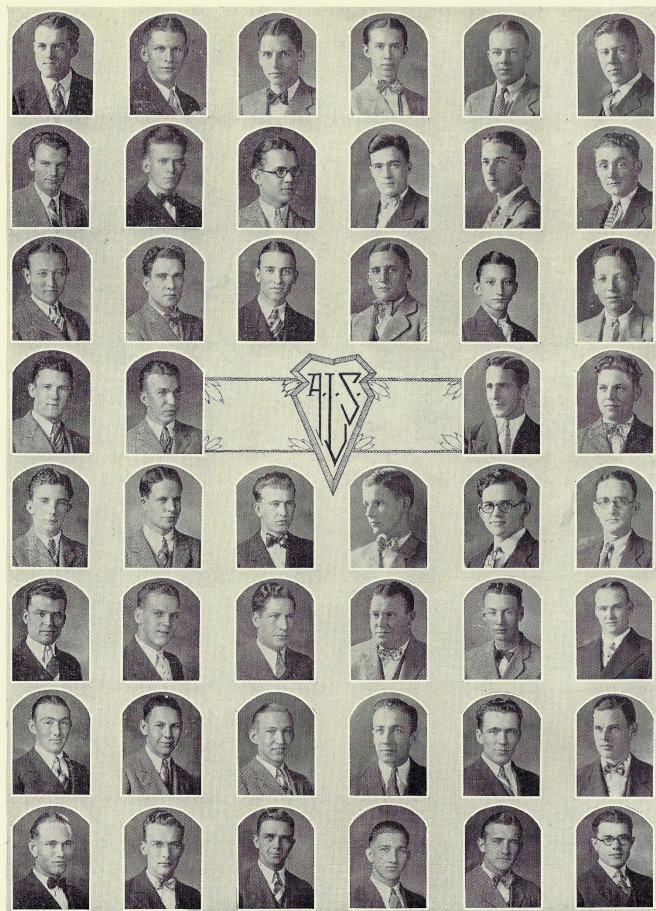


HIBBS	DEAN DALKE	BARKER	McBRIDE	CRAWFORD
ROBINSON	LUTHER	CASEY	TODD	WILEY
DUNCAN		SHIRTS		WRIGHT

STUDENT COUNCIL

President
Y. W. C. A. Representative and Secretary
Y. M. C. A. Representative
Ruthian Representative
Adelphian Representative
Aesthian Representative
Excelsior Representative
Freshman Representative
Sophomore Representative
Junior Representative
Senior Representative
Faculty Representatives

PAUL HIBBS
 DOROTHY DUNCAN
 RALPH McBRIDE
 LORRAINE SHIRTS
 ROY TODD
 EVELYN WRIGHT
 ERNEST ROBINSON
 HAROLD CASEY
 LEROY LUTHER
 DALE WYLEE
 PAUL CRAWFORD
 PROF. BARKER
 DEAN DALKE



Top Row: Crawford, Thomas, Kochan, Mullinix, Parker, C. Miller; *Second Row:* Hodge, Wood, Hollenbeck, Wylie, Peck, Anderson; *Third Row:* Waddill, Cook, Biggerstaff, Bourrette, Warner, Todd; *Fourth Row:* Walker, Minter, Pendleton, Arnold; *Fifth Row:* Jones, Tourtellote, Luther, Kay, Kinne, Langford; *Sixth Row:* L. Walker, Cokely, Kanan, Sims, Blackwood, Seeley; *Seventh Row:* Pulse, Fellers, McLean, A. Miller, McDonald, King; *Eighth Row:* Morton, Ocker, Rushton, Morlan, Williams, Hurton.

Eighty-two

Adelphian Literary Society



The loyalty manifested this year by the Adelphians to Missouri Wesleyan, to their society, and to each other is not a new phenomenon but the continued expression of that ancient Adelphian spirit which is the very existence of our society. The pick of the Freshman Class flocked to the fold of the Adelphian Literary Society and were properly taken in and initiated. With this fresh blood infused into the organization, it has done remarkable things this year. The society is justly proud of the patient application of its members to the old scholastic grind and the results thereby attained. And we might also mention that Missouri Wesleyan's football, basketball, and track teams of this year were captained by three prominent Adelphians. It also might be noted that two of the three Pauls of forensic fame also were Adelphians.

The Adelphian and Ruthean Literary Societies joined forces this year, and at the Park Café on March 13, gave the first annual joint banquet. It long will be remembered by each of the eighty guests as an enjoyable affair.

The slogan "Once an Adelphian, always an Adelphian"—how often we hear it repeated and see its fruitfulness—still retains its meaning. A prophet is not needed to foretell that as long as old M. W. C. exists, the Adelphians will be just as loyal and supporting as they have been this year and the years of the distant past.

Eighty-three



Top Row: Gilchrist, Hogan, Downey, Drumm, Dayhoff; *Second Row:* DeVall, Folsom, Nichols, Fender, Kay; *Third Row:* McClure, Bird, Potter, Burkett, McClure; *Fourth Row:* Shirts, Williams, O'Neal, Ryan, Fries, Norwine; *Fifth Row:* Saxer, Fulkerson, Hulett, Urban, Caldwell; *Sixth Row:* Woody, Biggerstaff, Kimes, Riley, Buzzard; *Seventh Row:* Cathcart, Campbell, Farmer, Cousins, McElwain

Eighty-four

Ruthean Literary Society



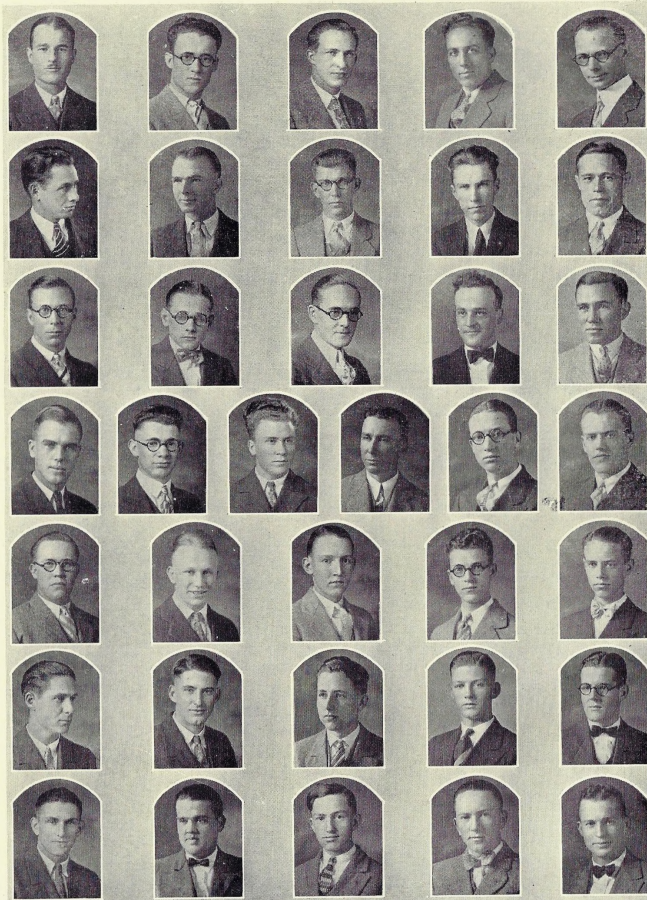
The Ruthean Literary Society will always remember the year of '28. Never was there a better spirit of friendliness and cooperation manifested by the girls.

With the view of showing all new students who we were, the Rutheans, together with the Adelprians, entertained them at a reception held in the K. P. Hall. Several weeks following, pledge day was held for all societies. We were delighted with the number who pledged Ruthean. Feeling that good things do not come easily, we duly subjected these "understudies" to the trying ordeal of initiation. The nature of the affair was a line party at the Royal Theatre, then a "keep-'em-awake" bunking party in the Ruthean Hall. In the early hours of the morning the formal initiation occurred and we became Ruthean sisters forever, for "Once a Ruthean, always a Ruthean."

Another bright spot of '28 was the football banquet served by the Rutheans. Our splendid championship team deserved the best and we worked in trying to give it to them.

As our joint reception in the autumn was successful to a satisfying extent, the Rutheans and Adelprians were desirous of holding an associate banquet, March 13. There were sixty couples in attendance. Thus did the formal activities of the Ruthean Society close for the year of 1928.

Eighty-five



Top Row: Kuebler, Robinson, Harden, Shultz, McBride; Second Row: Groom, Hall, Foster, Stevenson, Metz; Third Row: Dietrich, Borchers, Kaygay, Jacobs, Israel; Fourth Row: Croy, Smoot, Fox, Medsker, Beckwith, N. Miller; Fifth Row: Sauceman, Lockhart, Campbell, Hilbers, A. Miller; Sixth Row: McKee, Lower, West, Stewart, Crawford; Seventh Row: Duse, Long, Warner, Welch, C. Campbell.

Eighty-six

Excelsior Literary Society

Motto: *Suaviter in modo; fortiter in re.*

Colors: *Pink and green.*

Flower: *Pink carnation.*

OFFICERS FOR 1927-1928

FIRST SEMESTER

HAROLD KUEBLER
 ERNEST MCKEE
 EMIL DIETERICH
 LAWRENCE METZ
 C. H. SAUCEMAN
 HARVEY CROY
 LAVERN MERRITT
 DAVID FOSTER
 HARRY LONG
 HADLEY CRAWFORD
 EDWARD KAGAY
 MERLIN GROOM
 HERBERT WELCH
 DEWITT BECKWITH

OFFICE

President
 Vice-President
 Secretary
 Treasurer
 Sergeant
 Attorney
 Chaplain
 Critic
 Pianist
 Chorister
 Yell Leader
 Curators

SECOND SEMESTER

DAVID FOSTER
 MERLIN GROOM
 EDWARD KAGAY
 HORACE BORCHERS
 CLARENCE STEVENSON
 LAWRENCE METZ
 FRANK JACOBS
 HAROLD KUEBLER
 RALPH MCBRIDE
 CLEO HARDIN
 ELTON HALL
 ORAL FOX
 CHARLES CAMPBELL
 EMIL DIETERICH

The Excelsior Literary Society enjoyed the best of success during the year 1927-28. Activities were started for the year with the reception for the new students. Sixteen of these students, all of whom promise to be a valuable asset, pledged themselves to the society. Many interesting and worth while meetings and programs were given through the year. The Excelsiors took an active part in the outside activities of the school. The climax of the year's activities was reached with the annual banquet which was a feature of special interest and pleasure. The Society maintained through the year the high ideals for which it stands, and inspired the new members to continue to uphold them through the years to come.

Eighty-seven



Top Row: D. Graeff, Duncan, Crockett, Creason, Miller, Russell; Second Row: Foor, Clark, Smith, L. Graeff, Kranz, Shoemaker; Third Row: Warren, Matter, Hallcroft, Shultz, Henderson, Wright; Fourth Row: Rybolt, Donner, Merritt, Hartsook; Fifth Row: Steward, Hobson Keltner, C. Van Hoozer, Buck, Bentley; Sixth Row: Kuebler, Toomay, Gross, W. Van Hoozer, Stucker, Beckwith; Seventh Row: Milstead, Diven, Campbell, Couch, Stark, Deem.

Eighty-eight

Aesthesian Literary Society



Motto: *Be not satisfied with present attainments, for when growth ceases, decay has already begun.*

Colors: *Purple and gold.*

Flowers: *Purple Aster and golden rod.*

OFFICERS FOR 1927-1928

FIRST SEMESTER	OFFICE	SECOND SEMESTER
DOLLYE GRAEFF	<i>President</i>	DOROTHY DUNCAN
DOROTHY DUNCAN	<i>Vice-President</i>	ALICE BENTLEY
GERTHA STARK	<i>Secretary</i>	WILHELMINA GROSS
HAZEL STEWARD	<i>Treasurer</i>	LELLA GRAEFF
CLAIRE VAN HOOZER	<i>Chaplain</i>	LULA MAE COUCH
MILDRED SMITH	<i>Chorister</i>	IRENE MATTER
LETA HOBSON	<i>Pianist</i>	BERNADINE BECKWITH
	<i>Sergeants</i>	ALMA SHULTZ
		LORENE RUSSELL
EVELYN WRIGHT	<i>Council Representative</i>	EVELYN WRIGHT
RUBY FOOR	<i>Curators</i>	CATHERINE SHOEMAKER
ALICE BENTLEY		DOLLYE GRAEFF

Forty one years ago, in 1887, the Aesthesian Literary Society came into being under the auspices of Mrs. Proctor, wife of the President of Missouri Wesleyan, with the aim of helping every member to discover truth, beauty, and goodness. The banquet and lawn fete have become annual affairs in college life.

This year the society has forty-one active members. In addition to the reception for new girls, a rook party was given, in cooperation with the Excelsiors, for our new members. The annual banquet, which was held at the Cameron Hotel, March 10, was well attended both by the members who are in school and by former Aesthesians.

We are not satisfied, however, with present attainments, for as our motto states, "When growth ceases, decay has already begun". We hope that in the future the Aesthesian Literary Society will grow in scope and vision until it may be a more vital part of the lives of the girls who are Aesthesians; but we also hope that in its growth, it will not forget those who have been Aesthesians.

Eighty-nine



KOCHAN, Editor-in-Chief

THOMAS, Business Manager

DUNCAN	BECKWITH	GILCHRIST
STEWART	SHIRTS	KAY
TODD	HOGAN	LUTHER
		PROF. SLAYTON, Faculty Advisor
	HOLLENBECK	

"Owl" Staff

PAUL C. KOCHAN
 CHARLES W. THOMAS
 DOROTHY DUNCAN
 ROY HOLLENBECK
 HELEN GILCHRIST
 KATHLEEN HOGAN
 LEROY LUTHER
 LORRAINE SHIRTS
 HAZEL STEWARD
 RICHARD KAY
 ROY TODD
 DEWITT BECKWITH
 PROF. L. G. SLAYTON

Editor-in-chief
Business Manager
Associate Editor
Associate Editor
Literary Editor
Asst. Literary Editor
Sports Editor
Humor Editor
Secretary
Asst. Business Manager
Advertising Manager
Asst. Advertising Manager
Faculty Advisor

So great was the improvement of last year's "Owl" over any previous annual of this school that this year's staff was faced with a stupendous task in its attempt to equal the quality of the 1927 production. Due to the cooperation of last year's staff with the staff of 1928, the new staff had less difficulty in acquainting itself with its duties than had been the case in previous years. The staff of 1928 appreciated the goal set by the production of 1927 and the cooperation of the staff of that annual.

This year work was systematized as never before. Charts were prepared which indicated the duties of each staff member. Work was assigned and dates were set for the completion of that work. This plan was very successful. The result was that every member successfully handled his or her department and that all work was ready when needed by the editor. May it be said that no system, no matter how perfect, could have brought forth such excellent results if the members of the staff had not been willing and eager to help in every way possible.

Everyone realizes that other methods besides the usual means of securing money must be used in order to make an annual a financial success. On May 3, a carnival was presented for public approval by the "Owl" Staff and was received with joy and financial welcome. It was very successful. Ribbons, also, were printed for High School Day, May 11, and sold well.

The "Owl" of '28 is, in all probability, the last annual that Missouri Wesleyan will publish. In this annual are portrayed the things which are of interest to all students and alumni of the school. The "Owl" Staff feels that it can justly be proud of its achievement, and that its production is a fitting farewell to its Alma Mater.



SIMMS
CRAWFORD
BIGGERSTAFF
DUNCAN

PROFESSOR NULL (Faculty Advisor)

HIBBS
McKEE

OCKER
METZ
DIVEN
GRAEFF

Ninety-two

"Criterion" Staff



PAUL HIBBS
STEPHEN H. SIMS
PAUL K. CRAWFORD
HOMER OCKER
DOROTHY DUNCAN
JULIA DIVEN
MARY ELIZABETH BIGGERSTAFF
LAWRENCE METZ
ERNEST McKEE
DOLLYE GRAEFF
LORRAINE SHIRTS

Editor-in-Chief
Business Manager
Associate Editor
Associate Editor
Society Editor
Y. M. C. A. and Y. W. C. A.
Locals
Sports Editor
Asst. Business Manager
Circulation Manager
Asst. Circulation Manager

The staff has endeavored to produce a "Criterion" which would be a worthy criterion of Missouri Wesleyan College. It wishes to express its gratitude to all those who have in any way contributed toward the realization of that objective.

The staff of the 1927-1928 "Criterion" made several innovations in an earnest attempt to give Missouri Wesleyan an attractive and worth while paper, one which it would be a pleasure to read, and one which would occasionally stimulate thinking. Some of the innovations were: (1) the use of more engravings, especially views of the campus, which greatly enhanced the attractiveness of the paper; (2) the establishment of three new departments, viz: the Vox Studiosorum, the Jumbled Jottings and Idle Speculations of a Rambling Reader, and the department of College Humor with its illustrated, rollicking visibilities; (3) the securing of articles from faculty members (and here the staff wishes to thank the contributors of these excellent articles), the printing of more poems, short stories and sketches written by Wesleyan students; (4) and the enlargement of the paper from one of eight pages to one of twelve pages.

The "Criterion" of 1927-1928 was brilliantly edited by Paul Hibbs, and to him must justly go credit for whatever improvements were made. He worked unreservedly to publish a greater and better "Criterion" for a greater and better Missouri Wesleyan.

To other members of the staff goes much credit for their work which included literary composition and the transaction of business affairs.

The staff makes no extravagant claims concerning the merits of the newspaper. If the "Criterion" has met the approval of its readers, the staff feels that it is repaid for its efforts.

Ninety-three



HUTTON
WOOD

GROOM
SHULTZ

McBRIDE
WEST

OFFICERS FOR 1928

President
 Vice-President
 Secretary
 Treasurer
 Devotional Secretary
 Pianist
 Chorister

RALPH M. McBRIDE
 HARRY HUTTON
 FRANCES MEDSKER
 OWEN KERR
 FRANK JACOBS
 ARTHUR WEST
 OWEN KERR

Ninety-four



STEWART
DIVEN

DUNCAN
WARREN
PORTER

GRAEFF
BENTLEY

OFFICERS FOR 1928

President
 Secretary and Treasurer
 Pianist
 Chorister
 Devotional Chairman
 Recreation Chairman
 Foreign Department Chairman

DOROTHY DUNCAN
 DOLLYE GRAEFF
 FRANCES WARREN
 HAZEL PORTER
 HAZEL STEWART
 JULIA DIVEN
 ALICE BENTLEY

Ninety-five



Top Row: Crawford, Duse, Jones, Kagay, Kuebler; Second Row: Waddill, Williams, Campbell, Beckwith, Harden; Third Row: McLain, Saxer, accompanist, Professor Swift, director, Shirts, reader, Peck; Fourth Row: Biggerstaff, Cornish, Shultz, Warner, Foster; Fifth Row: Wood, Miller, Croy, Sims, Long; Sixth Row: Robinson, Kerr, Stewart, McBride, Hilbers.

Ninety-six

Men's Glee Club



Before discussing the work of the Men's Glee Club for the season of 1927 and 1928, let us pause for a moment to pay tribute to the late Dean Herbert C. Kelsey, who worked so diligently to make music a success at Wesleyan. Then may we also extend our appreciation to our director, Professor Luther W. Swift, for his earnest endeavor to fill the place of Dean Kelsey.

When the first call was given for glee club men, about thirty responded. Of these, thirteen had been on the club in previous years, and many others held a reputation as possible musicians in their respective high schools. This gave possibilities that no club of late years has ever had. Through work with the club and by special try-outs, Dean Kelsey prepared to select the personnel, but on October 13, he suddenly became ill and was gone within a few hours.

A week or so later, Professor Swift came to fill the vacancy, and found the club in a disorganized state. He immediately started to work, and, by the first of March, the organization was complete, with twenty-five members remaining. During the earlier part of that month the club took short trips to the adjoining towns.

On Sunday, March 18, the big yellow bus left the campus, and for eight days the same bus traveled over Northwest Missouri. In these eight days the club sang twelve programs, and on each occasion the audience responded with praise, showing that the program was a success. The schedule of towns was as follows:

March 18, morning	Stanberry
March 18, afternoon	New Hampton
March 18, night	Ridgeway
March 19, night	Bethany
March 20, night	Grant City
March 21, night	Maitland
March 22, night	Barnard
March 23, night	Oregon
March 24, night	Savannah
March 25, morning	Grace Methodist Church, St. Joseph
March 25, afternoon	Radio Station K. G. B. X.
March 25, night	Huffman Memorial Church, St. Joseph

Considering the handicaps of the club for the school year, one can conclude that the results have been more than ordinary. Thus too much praise can not be given to Professor Swift and his devotion to the club.

Ninety-seven



Mildred, we
have more school
days in common
that just M. D. C.
will never forget
M. H. & will all
Miss M. C. Clure.

Surely have
enjoyed knowing
you. I first
met you in
Physical Ed,
and then later
in Biology and
Botany. Don't
forget me next
year, and write
lots of love
Mary

Remember how
we have suffered
by each other in
Botany - I have
enjoyed knowing
you & your friend
Mary

Top Row: Milstead, DeVall, Shultz, Norwine; Second Row: Porter, Kuebler, Matter, McClure; Third Row: Kelsey (Accompanist), Miss Downey (Director), Urban (Reader); Fourth Row: Biggerstaff, Hartsook, Mrs. Swift, Campbell; Fifth Row: W. Van Hoozer, Burkett, Campbell, C. Van Hoozer.

Ladies' Glee Club

MISS ELEANOR DOWNEY, Director

MISS MILDRED KELSEY, Accompanist

FRANCES URBAN, Reader

OFFICERS

President	HAZEL PORTER
Business Manager	CLAIRE VAN HOOZER
Secretary	MARY HARTSOOK
Librarian	ELLA MARY DEVALL

First Soprano

Willa May Van Hoozer
Clara Burkett
Alice Campbell
Mary Elizabeth Biggerstaff

Second Soprano

Thesis Norwine
Ella Mary DeVall
Majorie Milstead
Dawn Campbell

First Alto

Mary Hartsook
Alice McClure
Claire Van Hoozer
Frances Urban

Second Alto

Louise Ferris Swift
Alma Shultz
Irene Matter
Vivian Kuebler

At the first call for rehearsal the girls responded in the usual hearty manner. Great interest was taken from the start, and every one has worked exceptionally hard this year. There were only two old members returning to the club this season, the remaining fifteen girls singing with the club for the first time. But under the capable direction and leadership of Miss Downey, the heaviest program ever attempted was prepared, and its performance met with great success.

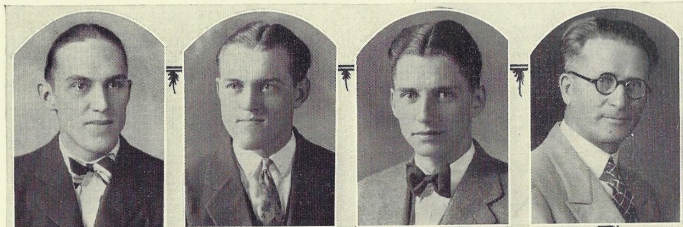
Miss Helen Grimes, teacher of piano, accompanied the girls during the first semester, but since she could not be with them the second semester, the Club was indeed fortunate in being able to secure Miss Mildred Kelsey as accompanist. Miss Kelsey is a most accomplished musician, and the Club is deeply indebted to her since she is a student in C. H. S. and has devoted a great deal of time to rehearsals.

An unusual number of short trips were taken during the winter months to neighboring towns and rural communities, and many lives were brightened by the programs, and at all times glowing accounts of Missouri Wesleyan were left. The towns visited were: Center School, Winston, Kingston, Lathrop, Osborn, Ridgeville, Hamilton, Maysville, Plattsburg, Amity, and Stewartsville.

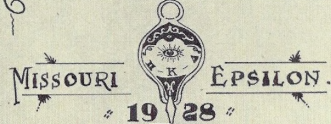
On Sunday March 4, the girls were in St. Joseph, during the day giving three programs. In the morning they gave a sacred program at St. Paul M. E. Church; in the evening they appeared at Huffman Memorial. In the afternoon they broadcasted their program from K. G. B. X.

The first date of the long trip was taken Thursday March 15, in Breckenridge. From there the girls went to Brookfield, Marceline, Browning, Gault, Green Castle, Unionville, Milan, Mercer, Ravanna, Lineville, and Jamesport. The trip was exceedingly enjoyed.

After returning from the tour the girls took several more short trips, and later the people of Cameron had the opportunity of hearing the club sing when they gave their home concert. Music lovers everywhere have commended the Club on their splendid work and type of music used, and this season goes down in the history of the Club as one of the most successful seasons during the history of its organization. Its popularity has been permanently established.



Pi Kappa Delta



First Row: Hibbs, Crawford, Kochan, Folsom. Second Row: Thompson, Matter. Third Row: West, Williams, Warren. Fourth Row: Fox, Couch, Gilchrist, Riley.

*Dear Mother -
I've enjoyed knowing
you and also the
entire team at your
home the Sunday we
conducted services
at Mt. Pleasant.
Best wishes,
Arthur West*

Pi Kappa Delta

The 1928 debate season was the most successful one Missouri Wesleyan has had since intercollegiate debating became a part of her extra-curricular activities.

The 1928 squad was not large, but was certainly efficient. Only twelve debaters participated in the regular schedule of fifteen debates, eleven of which contests were won and four lost. The varsity men's team has the distinction of not having had the losing end of three to nothing decisions during the 1928 season, which is an honor in itself.

The debate schedule follows:

Feb. 28	Park College	Neg. Kochan, Crawford	Won, 2 to 1
Mar. 5	Ottawa University	Neg. Hibbs, Crawford	Won, 3 to 0
Mar. 6	Baker University	Aff. Kochan, Hibbs	Lost, 2 to 1
Mar. 8	College of Emporia	Aff. Thompson, Crawford	Won, 3 to 0
Mar. 12	Wm. Jewell	Aff. Kochan, Hibbs, Crawford	Won, 2 to 1
Mar. 12	Wm. Jewell	Neg. Matter, Warren, Riley	Won, 2 to 1
Mar. 12	Wm. Jewell	Aff. Gilchrist, Couch, Williams	Lost, 3 to 0
Mar. 12	Wm. Jewell	Neg. Thompson, Fox, West	Lost, 3 to 0
Mar. 14	Culver-Stockton	Aff. Kochan, Hibbs	Won, 3 to 0
Mar. 22	Tarkio	Aff. Kochan, Crawford	Lost, 1 to 0
Mar. 28	Culver-Stockton	Neg. Hibbs, Crawford	Won, 2 to 1
Mar. 29	Westminster	Aff. Kochan, Hibbs, Crawford	Won, 3 to 0
Mar. 30	Central Wesleyan	Neg. Kochan, Crawford	Won, 2 to 1
Mar. 30	Central Wesleyan	Neg. Hibbs, Crawford	No decision
Mar. 31	McKendree	Neg. Kochan, Hibbs, Crawford	Won, 1 to 0

At the Pi Kappa Delta national convention, held at Tiffin, Westerville, and Berea, Ohio, Missouri Wesleyan was the eighty-first team to be eliminated out of eighty-eight, losing to Hastings, Neb., one of the competing teams in the final debate for the national championship, in a two to one decision.

Apr. 2	Heidelberg	Neg. Hibbs, Crawford	Won, 1 to 0
Apr. 2	Park	Aff. Kochan, Crawford	Won, 1 to 0
Apr. 2	Bethany	Neg. Hibbs, Crawford	Lost, 2 to 1
Apr. 2	Wm. Jewell	Aff. Kochan, Hibbs	Won 2 to 1
Apr. 2	Pittsburg	Neg. Hibbs, Crawford	Won 2 to 1
Apr. 3	Hastings	Neg. Hibbs, Crawford	Lost 2 to 1
Apr. 12	Ozark Wesleyan	Aff. Kochan, Hibbs	Won 1 to 0

A debate is to be held with Drury at Cameron, Wesleyan using her Freshman team against that school. In addition, there will be a radio debate later in the season if one can be arranged.

To Professor B. W. Folsom, coach of the 1928 squad, must go the credit for making a success of forensics at Missouri Wesleyan; for, in a comparison of the season records before and after his advent here, immense improvement can be noted. He has made forensics an actively supported activity in our school.

Missouri Wesleyan claims the championship of the Missouri colleges.

Alpha Psi Omega



Top Row: Walker, Shirts, Thompson, Pittman, Crawford, Urban; Second Row: Foster, Williams, Alley, Farris, Jones; Third Row: Sauceman, Moon, Biggerstaff, Henderson, Reed, H. Crawford.

Another successful year has been added to the career of Theta Cast of Alpha Psi Omega. Things were accomplished which had only been dreams in the past. A state contest was held at Central Wesleyan, May 3, in which the six casts of the state participated. As a preliminary to this event, we had a local contest of four one act plays to determine the one to represent us at Central Wesleyan. The plays given were: The Goal; The Hour Glass; The Florist Shop; and Not Quite Such a Goose.

Missouri Wesleyan was the first college in Missouri to secure a cast in the Alpha Psi Omega, national honorary dramatic fraternity. The main objects of the cast are: to stimulate interest in high grade dramatic work; to bestow recognition on those doing a high standard of work in dramatics with election into membership constituting the ultimate goal of the best dramatic talent; and to promote a closer fellowship among those interested in dramatics.

A social event which the members of the Theta Cast will always remember with keenest pleasure, and which they intend to make an annual affair, is the banquet at the Blue Room of the Highway Cafe, May 25.

One hundred two

Dramatic Club



RUSHTON

PENDLETON

KRANZ

OFFICERS FOR 1927-1928

1ST. SEMESTER	OFFICE	2ND. SEMESTER
LORRAINE SHIRTS	President	ELIZABETH BIGGERSTAFF
MAYNARD JONES	Vice-President	MURIEL WILLIAMS
J. W. BIGGERSTAFF	Business Manager	ERNEST THOMPSON
HAZEL PORTER	Secretary-Treasurer	PAUL WOOD

The Dramatic Club of Missouri Wesleyan has closed another very successful year. Miss Grace Henderson, with the assistance of the members of the dramatic club, has produced several good plays during the year. The most outstanding play was "The Whole Town's Talking". A number of one act plays have been cleverly worked out.

While there are only thirty-seven members, a wide range of talent is represented.

The club has been honored by having several of its members elected to the national honorary fraternity, Alpha Psi Omega. The club acts as a preparatory organization for the honors of Alpha Psi Omega, and Alpha Psi Omega acts as a goal toward which to strive for every member of the Dramatic Club.

One hundred three

Ministerial Association



First Row: Jacobs, Smoot, Israel, Prof. Law. Second Row: West, Couch, Medsker, Morris.
Third Row: Wagenknecht, Kerr, Campbell, McBride.

OFFICERS

President
Vice-President
Secretary-Treasurer
Faculty

FRANK E. JACOBS
ELDON SMOOT
EARNEST ISRAEL
PROF. H. C. LAW

One hundred four

The Ministerial Alliance

ITS INCEPTION

In former years M. W. C. had a strong, active ministerial association, but for some reason the past two years have witnessed the organization's dissolution. Sensing the need of an alliance of those interested in full-time Christian service, the ministerial students and students interested in religious education were called together to organize an alliance that might meet the needs of fellowship of such students in a Christian college. The efforts toward such an organization were largely due to Dr. Law who has been the advisor and faculty sponsor of the organization since its recent re-organization.

ITS PURPOSE

The Alliance invites to its membership all students in the college who are intending to enter definite Christian service, regardless of denominational affiliation. The purpose of the Alliance is to promote Christian fellowship among such students, provide devotional and inspirational meetings for its members, aid the college in the application of Christian principles to human conduct and to aid the members in a practical way in the pursuance of their Christian tasks while in school.

ITS PRACTICES

One of the best accomplishments of the Alliance this year has been the Gospel Team work done on the charges which the student members of the organization are serving. Six different charges have had the teams from the Alliance in one week meetings. Personal visitation in the interests of modern Christian evangelism and devotional services each evening of the week resulted in a spiritual quickening of each of the charges and the addition of new members to every charge. In one town the team secured thirty-four additions to the two Churches co-operating in the campaign. M. W. C. has not lost interest in the chief work of the church—the christianizing of men and women.

ITS FUTURE

The Ministerial Alliance is assured of a continuation of successes. The Constitution of the organization has been formed with the future in view. Young men and women who will continue to come to M. W. C. to train themselves for efficient Christian work will feel the same as this year's students have done and will find a basis upon which to build from year to year, Ministerial Alliances that will fulfill the dreams of this year's members.

One hundred five

Alchemist Club



Top Row: Stark, Kanan, Hutton, Arnold, Wright; Second Row: Ryan, Harden, Lockhart, Hilbers, Kay; Third Row: Prof. McLaughlin, Sims; Fourth Row: Matter, Fox, McLain, King, Warren; Fifth Row: Foor, Lower, Morlan, Kinne, Gross; Sixth Row: Todd, Stevenson, Shoemaker, Blackwood, Miller.

One hundred six

Theta Chi Delta



HARDEN
OCKER

STARK

FOOR

PROF. McLAUGHLIN
STEVENSON

ALPHA ZETA CHAPTER THETA CHI DELTA, NATIONAL HONORARY CHEMICAL FRATERNITY

At the first meeting of the year, Homer Ocker was elected president of the chapter; Clarence Stevenson, vice-president; and Cleo Harden, secretary-treasurer. The chapter sponsored the reorganization of the Alchemist Club for the fourth year. Several moving pictures have been shown at the monthly meetings of the club, in addition to the special reports and current events.

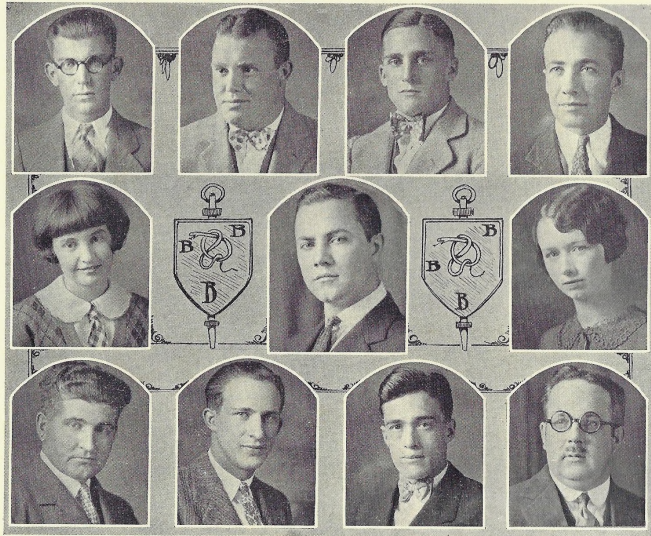
The annual initiation ceremonies were held in the Adelphian hall, April 3. Ruby Foor and Gertha Stark were the candidates, and were presented with the fraternity key and "shingle" at that time.

Alpha Iota, of Wittenburg College, Springfield Ohio, was host to the national Theta Chi Delta convention this year. Alpha Zeta was represented by Cleo Harden. There are now ten chapters in the national organization, with more being added each year.

An annual essay contest for members of the general inorganic chemistry class was instituted this year. The contestants were limited to six subjects, all of which showed the relation of chemistry to every-day life, and its importance to humanity in general. By this means, it is hoped to create a greater interest in the science.

One hundred seven

Beta Beta Beta



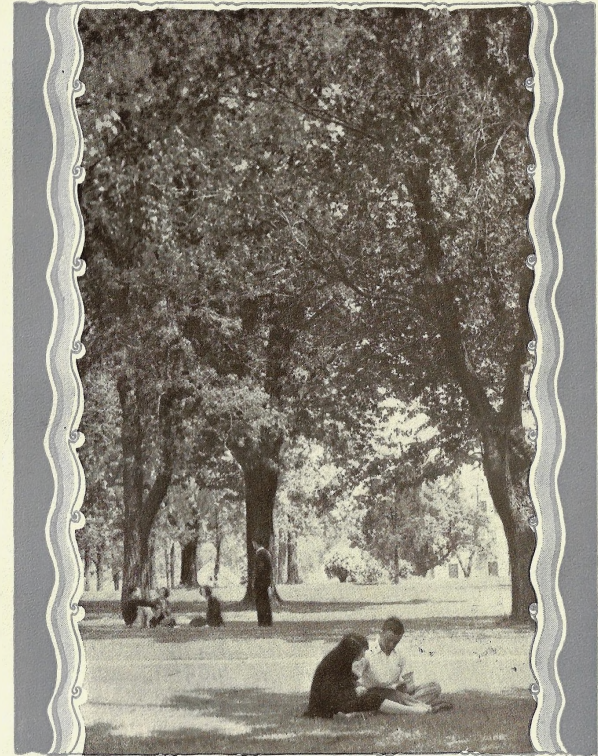
First Row: Foster, Sims, Bourrette, Miller. Second Row: Graeff, Slayton, Van Hoozer. Third Row: Wagenknecht, Harden, Wylie, Wilson.

- | | |
|--------------------|---------------------------------|
| President | GOLDIE BOURRETTE |
| Vice-President | S. H. SIMS |
| Secretary | D. H. FOSTER |
| Criterion Reporter | CLAIR VAN HOOZER |
| Faculty Advisors | L. G. SLAYTON, DR. L. A. WILSON |

The Zeta Chapter of Beta Beta Beta National Honorary Biological Fraternity was organized at M. W. C. in the spring of '26 for the purpose of stimulating sound scholarship among students of biological sciences, of promoting and investigating scientific truths along biological lines.

Chapters of this organization are limited to approved standard colleges and universities. Qualifications for membership are: scholarship, Junior or Senior having a major in Biological Science, and sound moral and ethical character.

M. W. C. is the first college in Missouri to organize a chapter of this fraternity. At the present time the Zeta Chapter includes the following new members: Hazel Porter, Hazel Steward, Ruby Floor, Alvin Miller, Leroy Luther, Cleo Harden, B. A. Wagenknecht, Bert Rushton, Dale Wylie, and Dr. L. A. Wilson.



HUMOR

THE PASSING SHOW

VOLUME I

Edited by Lorraine Shirts

NUMBER I

"Or is there any show to pass?" said Minter as he crammed for exams.

This paper is as passing as its name,
It will pass before your eyes, but never reach
to fame.
It will prove a fitting pastime
Perhaps a little better with here and there a
rhyme.

(With apologies to Bill Shakespeare)

To go or not to go; That is the question.
Whether 'tis nobler in the mind to suffer
The torment of two hours detention,
Or take to my heels at the sound of the last
bell,
And go to Lain's? To go; to suffer
No more; and by suffer to say we get
Abominable detention and an hour of explan-
ation
To D. Dalke? 'Tis a situation
Devoutly to be shunned. To skip, to loaf;
To loaf: perchance to miss an exam; ay
there's the rub,
After missing an exam what tears may come,
When I have gazed upon semester grades
Must give me pause.

George Reed—"Say, my girl is an angel."

Bert Rushton—"You never expect to see
her home, do you?"

Lecturer—"As she entered the car a hun-
dred eyes were upon her."

Lew S.—"Oh, boy, she must have been
some potato!"

Prof. Cline—"What is the Latin race?"
Raymond Warner—"I don't know; I
never went out for track."

Harold W.—"Say, Mac, you didn't
know I was an electrician."

Mac Lean—"How's that?"

Harold—"Why, last night over at my
girl's house the light fuse burned out. Guess
who fixed it? I did!"

Mac Lean—"Huh! You're not an elec-
trician. You're an idiot."

(Seen on Freshmen English paper)
"The most amazing sight I ever saw was
the sky-scrapers in New York crossing the
Hudson on a ferry boat."

Kagay (as wagon passes Ford Hall): "Say,
Mister, do you haul garbage?"

Driver: "Sure, get in."

Harold K.—"When I die, I shall leave
my brain to science."

Alice McClure—"Stingy."

THE PASSING SHOW

When first you went to see her
 You showed a timid heart,
 And when the lights were low
 You sat this far apart,
 But when your love grew warmer
 And you learned the joy of kiss,
 You knocked out all the space
 And sat up close like this.

Cleo H— "I hear you and 'Toots' had a falling-out last night. What was the trouble?"

Harold W— "Oh, it was all her little sister's fault. She set the alarm clock under the sofa and when it went off, from force of habit, I shouted, 'Wake up, you egg, it's time to move.'"

The difference between a profession and a trade is that the first-named has a Diploma and the latter a Packard.

—Automobile Adv.

Lament of Merrill Tourtelotte

I gaze down
 At
 My feet
 I ponder
 Thinking
 How far away
 They seem;
 Can all the rest
 That lies
 Between, be
 Me?

Voice (from dark parlor): "My but your nose is cold!"

Small brother (to irate father who is suspicious): "Gee, Pop, I bet Rover is in the parlor again."

To the Latin Department

Giveit tu em gudant plenti,
 Soc et tu em gudant strong,
 Never letem get a stand in,
 Gopher enni word that's wrong;
 Makem flunk and makem worry,
 Makem sit wun dewat cher thinking;
 Makem cursther evilluck,
 Makem letem get too hopefull,
 Never say they're doing well,
 Makem wish they hadn't come here,
 Makem wishu were at—home.

A century ago the college student was looked up to; fifty years ago he was admired; twenty-five years later he was respected; today he is *tolerated*.

"Here, boy," growled a tightfisted buyer of a newspaper, "what's this you were yelling about Great Swindle—Sixty Victims? I see nothing about it in the paper."

"Great Swindle," shouted the youth even more loudly, "Sixty-one Victims."

Miss Herring: "You were seen last night clasped in a young man's arms out in front of Rice Hall."

Josephine Hulett: "That's just pure slander! It was so dark I couldn't see him clearly myself!"

Terry: "Now just what would you do if you were in my shoes?"

Dick Kay: "Take 'em off before I tripped and broke my neck."



The College Men Say
 Nothing Else Will Do.

IN the most popular of all University suits, SOCIETY BRAND has carried out every little detail with a fine record for the college man's preference; no frills; no extremes of any kind, but the very last word in distinctively smart college cut.

Finely tailored in special college fabrics by SOCIETY BRAND.

C. N. Stucker and Company

THOS. FIDDICK
Feed, Fuel and Farm Seeds

Our Motto:

"Quality and Service."

The old reliable Cherry street stand

Call 77

Park Cafe

Large Dining Room Meals and Short Orders

Fountain Service

Mr. and Mrs. Clarence E. David

ROYAL and SENATE
THEATERS

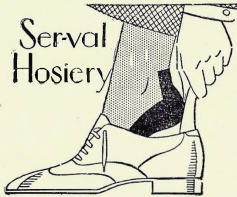
Paramount Pictures

Best Selected Comedies, Novelties and News

THE STANDARD STORE

W. E. Atkinson, Manager

*"A Good Store
in
A Good Town"*



Serval
Hosiery

We know only one way to go and that is forward. The only way we can continue to go forward is to keep on making and selling better shoes.

We will do this--So stick with us



"Star Brand" Non-Removable

Pretty styles and good values

at attractive prices, will bring you back to us for the next pair
THE ELMORES Wesleyan
 Students of Mo. **QUALITY SHOE STORE** 35 yrs ago

Diamonds Watches
 Special Attention to
 Watch and Jewelry Repairing
 FREYMANN JEWELRY CO.
 New Missouri Bldg. 118 S. 8th. St.
 Phone 6-3428
 St. Joseph - - - - - Missouri

Don't Cuss Call Us
 When You Have Tire
 or
 Battery Trouble
 Millard's Tire Shop Tel. 114

Minter—"Hello, where are you walking in such a hurry?"
 Welch—"A fellow stole my Ford."
 Minter—"But you can't overtake him on foot."
 Welsh—"Oh yes, he forgot the repair kit."

Faith - Hope - Success
 go hand in hand with
Thrift

Good Things To Eat
 At
 The Right Price
 Hales Grocery
 Phone 1

The Farmers Bank
 of Cameron
 Cameron - - - - - Missouri

One hundred fourteen

Cameron Hotel

We Strive to Please

Chas. O. Porter, Mgr.

The Corner Drug Store

Get it where they've got it.

D. H. McCallum

Will McGlumphy

Abstracts of Title

Insurance

Notary

ALARM CLOCKS, SPECTACLES, CRUMB TRAYS

Croy—"Say did you know you can get a good chicken dinner for 10c down town.

Robinson—"Where?"

Croy—"At the feedstore."

Some weeks ago one of our Rural Subscribers called over another line and reported, "No one on our line has been able to get Central since 8 o'clock this morning. A test indicated that there was a "Heavy Ground" on this line and after going to six telephones, the trouble-shooter came to the aforesaid subscriber's place he found on top of the Telephone, a Metal Crumb Tray resting against the two binding posts, "Shorting-it-to-Ground."

We have driven TEN miles to take a pair of SPECTACLES off a Telephone that had been doing what that crumb-tray was; we have gone SIX miles in zero weather to remove an Alarm Clock.

Do you realize that our records show, that on rural lines, thirty-two per cent of the trouble is caused, (not intentionally of course) by the patrons themselves.

Do not use your Telephone for a "Catch All", the furniture man has those things for sale.

Help us to make your service better.

Middle States Utilities Co.
 S. D. Thompson, Mgr.

Moore
 Funeral Home

(Successor to Fry & Todd)

Picture Framing

Phone 755

One hundred fifteen

WORLD'S GREATEST BUSINESS

The Laundry Business Is Going to Be "A Billion by 1930"

The greatest personal— service— business in the world today is the laundering and dry-cleaning of wearing apparel; that it is being developed successfully is evidenced by its growth. We are very happy indeed to serve you. One of our service cars is in Cameron and that neighborhood every Monday and Thursday.

Conser Laundry Co., St. Joseph

Phone 3386 for Service

**Staple and Fancy Groceries
Fruits and Vegetables in Season**

Men's Shoes and Work Clothes

—ALSO—

A Full Line of Ladies' Silk Hose
in Latest Shades

Horton Grocery Co. Phone 345

Anderson Beauty Shoppe



All Branches of Beauty Culture



—PHONES—

Res. Black 791 Shoppe 346

Sims—"I spent last summer in a very pretty city in Switzerland."

Peewee—"Berne?"

Sims—"No, I almost froze."

Prof. Null—"When did Milton write 'Paradise Lost?'"

Lewis S.—"When his wife returned home from her summer vacation."

Complete Insurance Service

Farm Loans

H. L. POYNTER

111 Third St. Cameron, Missouri

Dawn—"I just love little birds."
Maynard—"Fine. My professor just told me I was a little cuckoo."

Prof. Slayton—"Deep breathing destroys microbes."

Edith Green—"But how are you going to force them to breathe deep?"

Rex

Billard Parlor

Upstairs Opposite Park

PLAY BILLARDS

for

Clean—Wholesome—Recreation

R. H. ISLEIB, Manager

One hundred sixteen

WORLD'S

LARGEST

CHAIN

JCPENNEY Co.
A NATION-WIDE INSTITUTION

"quality—always at a saving"

DEPARTMENT

STORE

ORGANIZATION

109-111 South 7th Street and 708 Felix Street

St. Joseph, Missouri

WILLIAMS GROCERY
and
MEAT MARKET

"RICHELIEU STORE"

PHONE 520

"Now I wonder," remarked the nice old fashioned lady at the dance, "I wonder what ever's become of the girl who used to drop her eyes, raise her face timidly, and murmur: 'You'll have to ask papa?'"

"She's got a daughter," answered the up-to-date matron, "who shouts, 'Shove her into high, kid! The old man's gaining on us!'"

PARK BARBER SHOP

West Third Street

FIRST CLASS WORKMEN

Your Patronage Solicited

W. H. Denny, Proprietor

C. B. HENDERSON

Automobile Service

Parts & Accessories

TELEPHONE 127

The difference between a profession and a trade is that the first named has a Diploma and the last named a Packard.

Sandy—"Hooray! The wind has changed!"

Convalescent Wife—"Well, mon, what of it?"

Sandy—"Ye ken the doctor said ye needed a change of air."

Remember the Day
with Snap Shots

Don't let those good times be forgotten
Service and Quality

Photo Finishing Fred E. Luce Cameron, Missouri

One hundred seventeen

Cooper's Underwear
Mallory Hats

Hole-proof Hosiery for Men and Women
Bradley Sweaters for Men and Women
Ide Shirts and Collars

Kupperheimer Clothes

Dillener Clothing Co.
Cameron Missouri



Where Savings Are Safe

The First National Bank

* * * Member Federal Reserve System * * *

We operate under the direct supervision of the United States Government.
Such supervision insures the best bank protection possible for your funds.

Mrs. Poland (over the phone)—“Mable is not at home. Can I take any message.”
Young Male Voice (nervously)—“Er--yes Jushsay--er--Toodle--oo--sweety---ectums---from Alvin.”

Dean (in psychology class)—“Mr Blackwood, why does a dog hang out its tail while running.”

Dick B.—“To balance his tale.”

PLACE BROS.

Meats and Groceries

Phone 291

One hundred eighteen

Complete Music
Service

Kimball Pianos
Orthophonic Victrolas
Martin Band Instruments
Bacon Banjos
Washburn Guitars
Sheet Music
Records
Service



You are Welcome at Mahaffey's
Every instrument is a standard make
Terms if desired

Mahaffey Music Co.

CAMERON, MISSOURI
Phone 190 221 E. 3rd St.

For six years there has been a Shirts, serving the farmers of this community.

We continue this service with the famous John Deere line of implements.

See us for either a new or used motor car.
Our Chevrolet service is unexcelled.

H. V. Shirts & Co.

FRANK L. PULLEY
ATTORNEY AT LAW

Practice in
State and Federal Courts

Cameron Missouri

One hundred nineteen

Preacher—“I understand you are a mind reader, Miss Duncan.”

Dot—“Palistry is so much more reliable I can see at a glance you have a palm.”

Roy—“What is a hypocrite?”

Croy—“A boy who goes into the sociology class with a smile on his face.”

J. B. Russell

Dealer for All Kinds of
BUILDING MATERIAL

Long Bell Plan Service

Phone 455

Since 1894

Prof. Folsom—"Give me a sentence using the word 'gruesome'."

Warner—"I didn't shave for a week and grew some whiskers."

Rushton—(Going out for football practice) "Tell the girls at the dance tonight that every time I get stepped on I'll think of them."

We appreciate the valued friendship of the student body and our efforts will be to increase this friendship in every way possible.

The Cameron Progress

TOM KLEPPER

Cameron, Missouri

Headquarters for
College Girls

Dresses Coats Hats

Cleaning & Pressing
in Connection

Cameron Style
Shop

Exclusive Women's Wear

College Crofters Corporation

*Class Rings, Pins
Medals*

*Commencement Invitations
Diplomas*

*Free sketches of original designs for class,
society, and club pins.*

*Graphic Arts Building
Tenth & Wyandotte*

Kansas City - - - - Missouri

One hundred twenty

A Message To Graduates

Those of you who have made the most of your opportunities will start off Life's real work (which begins now) auspiciously. We hope all of you have done so. (We could wish you nothing better if we took a week thinking about it.)

Hirsch Bros. Dry Goods Co. St. Joseph, Mo.

Compliments
of
Hillyard Chemical Company
St. Joseph, Missouri

OWEN & MURRAY

The Rexall Store

Drugs—Wall Paper—Kodaks
Fountain Pens

Soda Fountain

119 East Third Street

Lives of great men all remind us,
As their pages o'er we turn,
That we're apt to leave behind us,
Letters that we ought to burn.

MARY MUNSON

Millinery and Art Goods

103 W. Third St. Cameron, Mo.

One hundred twenty-one

Thomas E. Deem

Auctioneer

Sell Anything—Open for Dates

Call Phone 788

Townsend, Wyatt & Wall Co.

ST. Joseph's LARGEST and OLDEST Retail Department Store

Our principal departments are--

Women's, Misses' and Children's Apparel; Millinery, Gloves, Hosiery, Shoes, and other accessories of dress, Silks, Dress Wollens, Dress Cottons, House Keeping Linens, Rugs, Draperies, Art Department, Gift Shop, Furniture, House Furnishings.



Six large floors displaying the world's newest and best merchandise of every kind.

When you come St. Joseph be sure to visit our store.

We are sure you will find much of interest and profit. WELCOME!

FORD HALL LOAFERS' CLUB

MOTTO: Never do today what you can put off till tomorrow.

OBJECT: To get by.

RESULTS: None.

QUALIFICATIONS: One week behind in all studies, never attend chapel, take all cuts allowed and more, too.

FAVORITE FLOWER: Three bells.

PRESIDENT: Wayne Curtis Downing.

VICE-PRESIDENT: Loyd McDonald.

SECRETARY: Earl Duse.

TREASURER: All members of Ford Hall.

Everything to Eat and Drink

*Neff's
Bakery and Fountain*

Candies

Delicious Refreshments

Excellent Service

Cameron - - - Missouri

One hundred twenty-two

You'll Like Ethyl



"Knocks out that Knock"

For Sale by Any
Standard Oil Service Station
And Authorized Garage
Standard Oil Company
CAMERON, MISSOURI

Captain (fallen overboard)—Don't stand there like a dumbbell. Give a yell can't you.?"

Wayne D. (panicky)—"Certainly, sir. Rah! rah! rah! Captain, Captain, Captain!"

O. F. Ulrich

Writes All Lines
of Insurance

Phone 553

Cameron Missouri

John T. Frazier

Furnaces and Sheet
Metal Supplies

Cameron Missouri

One hundred twenty-three

The Cousins Lumber Co.

Building Materials for All Purposes

*Why Not Let Us Fill Your Bin
With
HENRY FORD COAL*

The WINCHESTER Store

Red Star Stoves McCormick and Deering Implements
Hardware, Tools, Cultery, Harness
DUCO Du Pont Paints

O. E. CONNELL

Phone 63

Cameron, Missouri

One hundred twenty-four

“Quality First”

Is Our Motto

And that's what you want

in a

Photograph

A. S. Brown

105 E. Third St.

Cameron, Missouri

One hundred twenty-five

Derge-Bodenhausen Clothing Company

A STORE FOR MEN AND
YOUNG MEN

On Felix Street at Seventh

St. Joseph, Missouri

Go to Taylor's Bakery for Ice Cream

25c per quart, 15c per pint

CAKES OF ALL KINDS
GOLDEN KRUST BREAD

"Only one Bread--that's Taylor's"

218 East Third Street

Cameron, Missouri

ON THE WIRE

R-r-r-rin-ine.

"Hello Ford Hall?"

"Yes."

"Is 'Pee-wee' there?"

"No."

"Is Bert?"

"I'm afraid not."

"Then Paul?"

"I'm sorry."

"Well, I'm awfully lonesome. Won't you come over?"

"What?"

"By the way, who is this?"

"The Janitor."

BANG.

Lincoln **FORD** Fordson

CARS, TRUCKS, TRACTORS

Authorized Sales and

Service

WALTER W. HAMMER

Cameron - - Missouri

One hundred twenty-six

If it's quality and service you want

Phone 80

Williams Oil Company

The Midland Hotel

We Appreciate Your Patronage

Mr. and Mrs. R. E. Kendrick

Mac—"I love the true, the good, the beautiful, the innocent--"

Jo—"This is rather sudden but I think father will consent."

Warner (to druggist)—"Will you give me something for my head?"

Druggist—"I wouldn't take it as a gift."

H. KAPKE

"The Master Tailor"

Cleaning—Pressing—Tailoring

I carry the well-known
Dotmer wool line.

Phone 98

Upstairs

W. H. KIMES & SONS

Hardware and Furniture

Home of
Devoc Paint and
Minolack Varnish

Phone 87

Cameron Missouri

We, the editors may toil till our finger tips
are sore,

But some poor fish is sure to say,
"I've heard that joke before".

One hundred twenty-seven

J. C. McComb, President

E. E. Newby

Cameron Co-Operative Elevator Ass'n

*Dealers in Purina Feeds
Coal, Oils, Sewer Pipe
And All Farm Products*

James Henry, Manager

Cameron, Missouri

Electric Shoe Shop

It's our business to rebuild your shoes
We double their life. Return postage
paid on mail orders.

R. L. MACRAE

Cameron, Mo.

Phone 198

L. A. WILSON, M. D.
PHYSICIAN and SURGEON

Howser Building, Third and Chestnut Streets

Phones: Office 737; Residence 737A

Mornings and Sundays by Appointments

Maude R. Maxwell

CHIROPRACTOR

Cameron, Missouri

Prof. Barker—"What do you think of
political parties?"

Eileen Kranz—"I don't know, I never
attended one of them."

J. W.—"Listen, please, I appeal to
you--"

Vera Lou—"Not in the least."

Quality Jewelry

Watches, Diamonds, and Novelty Goods

*Kirkpatrick Jewelry
Company*

St. Joseph, Mo.

One hundred twenty-eight



Young Men Know

Every day you hear of some young man
stepping into a good thing
Ten to One its a pair of Walk-Overs

Inter-woven Socks for Men

R. S. Brown Shoe Co.
"Economy through Quality"

Dr. C. S. Compton

Osteopathic Physician and Surgeon

OFFICE

Corner Third and Cherry

Cameron

Missouri

If you don't like these jokes.
And their dryness makes you groan,
Just stroll around occasionally
With some good ones of your own.

Prof. Slayton (in Botony class)—"Pen-
nington, what plants flourish in excessive
heat?"

Pennington—"Ice plants."

*Blue Bird
Beauty Shop*

'FLUTTER IN'

Phones:

Shop 242

Home 163

WISE BROTHERS

Cash Grocery

Fresh Fruits and Candies

PHONE 281

Cameron

Missouri

One hundred twenty-nine

**Junction Eating
House**

*Patronage of Teachers
and Students
Appreciated*

Everything First Class

W. E. Quigley, Prop.

Your Favorite Drink Is Served
As You Like Best
At Our
Liquid Fountain

Delicious sodas, tempting sundaes, and refreshing drinks
made of pure wholesome fruits and syrups

Try Our Service, You'll Like It

LAIN DRUG COMPANY

Fulton Butler Lees Summit
Pleasant Hill CAMERON, MISSOURI Blue Springs

J. W. POLAND
Furniture and Picture
Framing
Y. M. C. A. BUILDING

Metz—"I dream of you constantly, dear,
do you know that?"
Laurene—"I knew that you were always
asleep but I didn't know that."
Hazel—"Don't those two benches over
there look lonely?"
Ikey—"Why don't you go over and put
them closer together?"

Thank You
EDELEN PHARMACY
(Service plus Quality)

C. EVERETT FORD
for
Hardware, Cutlery, etc.
Our aim is
Good Goods at Low Prices
Uhl Bldg.

Plain Price Mercantile Co.

Telephone 58

Dry Goods, Groceries, Shoes and Notions

HOME OF PHOENIX SILK HOSE
FOR MEN AND WOMEN WHO CARE

Cameron, Missouri

Have you read "Flannels"?

Gene—"You thinking much about exams
these days?"

Red—"I'll take a passing interest in
them."

Who is this goat that does "Nothing else
but?"

Dr. L. F. Graham
DENTIST

Office, 115 E. Third Street
Ground floor of
Citizens Office Building

PHONES:
Office 155 Residence 585

B. A. Wagenknecht

LIFE, HEALTH and ACCIDENT
INSURANCE

Phone Blue 757

Cameron, Missouri

**THE Shave Supreme,
HE Shave That's Clean.**

Bobbed Hair Trimmed

**Clark Brothers
BARBER SHOP**

All Work Guaranteed

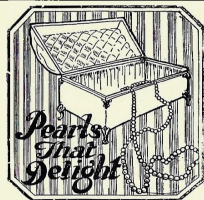
On the Campus--

—“OR OVER TO THE HOUSE” from the first class of the morning until the last bell at night if you want to look -- and be -- well dressed you'll buy Townsend-Ueberrhein clothes. College styles tailored for us by Hicky-Freeman, Society Brand and others in the most approved manner, at \$35 to \$75

Proper fixings -- Manhattan Shirts, Dobbs Hats, Neckwear and Hosiery selected to correspond in quality, style and coloring with our college clothing.

Townsend-Ueberrhien Clothing Company

St. Joseph, Missouri



Gifts for all Occasions

Graduation Weddings Birthday

ALSO

Musical merchandise and sheet music
First class Optical Service
Fine Watch Repairing

F. H. Ames Jewelry, Optical and Music Store
Dr. W. E. Goll, Registered Optometrist

New Florence Barber Shop

W. C. Florence, Prop.

A trial convinces

Three Chairs E. 3rd. St.

Better Barbers

Cameron

Missouri

FLIVVER FACTS

A bouncing, a jouncing,
A creak and a crack
A swagger, a stagger,
A blow in the back.

A knocking, a rocking,
A jolt and a jar,
A jiggle, a joggle,
A helluva car.

One hundred thirty-two

Apex Chocolates

“The Peak of Perfection in Confections”

Apex Chocolate Company, Boston, Mass.

Apex chocolates are essentially a distinctive high grade of confections, packed in dainty, attractive packages, designed to please all tastes

C. D. Smith Drug Co.

St. Joseph, Missouri

Distributors

SHEAFFER'S Let Your Next Fountain Pen be a "Sheaffers"

They are guaranteed for a life time

Leibrandt Jewelry and Music Store

Brunswick Phonographs
Gulbranson Pianos
Atwater Kent Radios



The News-Observer
Established 1906

Valuable Advertising Medium
Because Everybody Reads It.

Modernly Equipped Job Department

B. B. Witt, Prop.

Eyes
Examined

Glasses
Fitted



C. W. Sherman, Optometrist

One hundred thirty-three

CREAM OF QUALITY

A
CHAPMAN
PRODUCT
ICE CREAM

The Cameron Trust Company

Capital	\$100,000.00
Surplus	\$100,000.00
Undivided Profits	\$25,000.00

Magazines around School

American Girl Dorothy Duncan	Woman's World Miss Oakes
Country Gentleman 'Woody' Walker	Plain Talk Ruth Pittman
American Boy Paul Kochan	Golden Book J. W. Biggerstaff
Wild West Edward Kagay	Sunshine Virginia Henderson
Physical Culture Julia Diven	Good Housekeeping Lucile Kay
Literary Digest Paul Crawford	Woman's Home Companion
Science and Invention Roy Todd Prof. Barker

OCEAN TO OCEAN CAFE

The place where
Most people
EAT

Student trade solicited

C. L. Schenider, Prop.

City Market and Grocery

QUALITY -- SERVICE

Honest weight

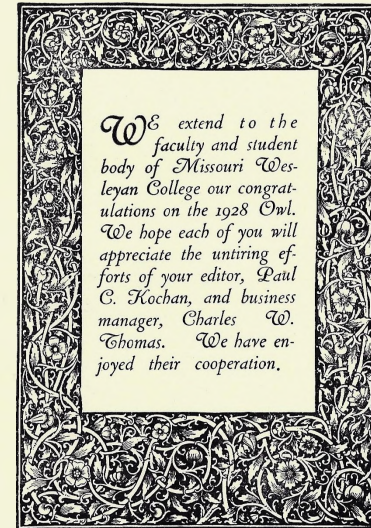
FRESH VEGETABLES and FRUIT

HINDERKS BROS.

Props.

Phone 49

Our Congratulations:



The William Jewell Press

Harvey J. Ray, Manager

Liberty, Missouri



The
'GOLD STANDARD'

WHAT the gold standard means in money values, the Burger imprint is to the college and school annual world. It signifies the designing genius which has created the greatest annuals, the utmost in printing plates, and a service which is truly specialized, intelligent, interested, and thorough, comprehending every phase of yearbook building and financing. ¶ This book is a product of such service. ¶ An inquiry about your book will be welcome.

Burger-Baird Engraving Co.
ARTISTS-DESIGNERS PHOTO ENGRAVERS
GRAPHIC ARTS BLDG. KANSAS CITY MO.

One hundred thirty-six

As It Happened

September

- Sept. 5. Registration.
- Sept. 6. Ditto.
- Sept. 8. Freshmen still lost. Seniors already assume air of superiority.
- Sept. 10. Y. M. C. A. and Y. W. C. A. Reception introduces everybody. Girls select their masculine subjects.
- Sept. 14. Some words remind us of a coming football game.
- Sept. 21. Kangaroo Kourt. Justice, dost thou prevail ever?
- Sept. 22. Results of Kangaroo Kourt in evidence.
- Sept. 28. A little pep oozing out slowly.
- Sept. 30. Pewee and his brigade together with Casey-Jones took the quack out of the ducks.

October

- Oct. 5. New fashions uniformly presented by Freshman girls.
- Oct. 7. Beat Drury 14-7.
- Oct. 8. Professor Taylor gives us a we feeling at chapel.
- Oct. 13. Professor Kelsey passes from our midst.
- Oct. 15. "The Whole Town Talked", under Miss Henderson's direction.
- Oct. 19. Aesthesian-Excelsior open program given.
- Oct. 21. Too bad for Culver-Stockton. 46-6.
- Oct. 22. Boys cheer a pretty Student Volunteer.
- Oct. 28. Wentworth vs. Wesleyan 14-6. How did they do it girls?

November

- Nov. 4. Win a nice game over Tarkio.
- Nov. 5. Miss Oakes, she would talk on the Home.
- Nov. 9. Girls must date each other because of rigid football rules.
- Nov. 11. 6-0 over Central. Can you imagine Wesleyan being defeated!
- Nov. 12. Mr. Dusenberry makes announcement for Sunday.
- Nov. 15. Alumni Banquet planned.
- Nov. 16. Pledge day. We wonder! Well!
- Nov. 23. Everybody in condition to beat Jewell.
- Nov. 25. We couldn't help ourselves, Jewell. Alumni Reception.
- Nov. 26. Alumni Program.

One hundred thirty-seven

December

- Dec. 1. Red noses prevalent, color just misplaced.
- Dec. 17. Reminded of Sunday School.
- Dec. 22. Mr. Hibbs goes skating.

January

- Jan. 4. Some resolutions broken.
- Jan. 6. Prof. Barker makes some sensational statements before innocent student body.
- Jan. 7. Dean reminds us mush is not good for health of institution.
- Jan. 11. Dean applies scripture to exams. We need sympathy to be sure.
- Jan. 13. It might be well to put on life savers to keep from sinking.
- Jan. 14. Breathing again.
- Jan. 15. Register again.
- Jan. 26. No more marriages planned.

February

- Feb. 2. Wesleyan took the Valley by storm.
- Feb. 3. A Freshman boy made famous overnight.
- Feb. 8. New indeed, a pep meeting held in behalf of basketball.
- Feb. 11. Lincoln split wood and made Pres. again. Freshman robbed of ice cream.
- Feb. 16. Faculty play basket ball.
- Feb. 17. Faculty not so well.

March

- Mar. 1. Win debate from Park.
- Mar. 8. Won a late debate over Emporia.
- Mar. 16. Good-bye for a few days friends.
- Mar. 27. Glad to come back.
- Mar. 28. Glee Clubs have much to tell.

April

- Apr. 3. Prof. Barker speaks on "Seventh Heaven".
- Apr. 6. Old friends and former schoolmates back. Lose track meet to Haskell.
- Apr. 7. Our intellectual heroes back from Ohio.
- Apr. 10. Dean explains use of modern rumble seat to class in Psychology.
- Apr. 20. Prof. Law makes last long chapel speech.
- Apr. 25. "Owl" staff carnival.
- Apr. 27. Debate with Drury.

May

- May 1. Girls' Glee Club Concert.
- May 25. Good-bye Alma Mater.

Autographs

Mac Dear: I shall always remember you as a true friend and a loyal Kuthen, for we struggled thru French in the same class, and although I did mostly "struggling", you were there to help.

Alice Arnau,
Dorcas Campbell

Dear Mildred,
I will never forget our good times together - especially studying Botany!! yes you are one of my dearest friends and I will always remember you as a neighbor Pal and friend.

Love
"soats"
Frances Cathcart, Cameron, Mo.

Dear Mildred:

Shall we ever forget our times in Botany? Did we study, well I'll say - we did.

You were always a friend who one could depend on. Wishing you lots of success.

One hundred thirty-eight

Love
Phyllis McQueen

my picture isn't in here so I'll draw it.

Lois Allen
The Owl 1928

Autographs

Dear Friend:

Remember me as an old friend at M. W. C. Wishing you success.

D. Parker.

Dear Mildred -

I shall always remember our confidential talks in Botany Laboratory. You are among my best Wesleyan friends and I hope to see you back again next year. Sincerely - Lella Graff

The Editor's Final Words.



In an issue of the Criterion there was an article some time ago which dealt with the fact that the head of an organization received all the honor for the achievements of the organization and that the members who made such honors possible were passed unnoticed. There is quite a bit of truth in such a statement. The Editor does not know how this year's book will be received by the students and patrons of Missouri Wesleyan. There are many things about it which should bring pleasure to all. It is only fair to say that if one member of the staff had failed to contribute his or her part to the task, there would be a scar in the plan, a blot on the page which could not be erased. But there has never been any hesitation, any delay on the part of any staff member. Each has been willing to help in every way, and all have united in producing the "Owl of '28." The Editor feels that it is only fair to say that not he but the staff as a whole is responsible for the planning, the building, and the completion of this contribution to a successful year.

To last year's staff we owe a debt of gratitude for help and advice, and for the use of materials which could not otherwise have been obtained.

Now may we turn to the school which we are bidding good-bye. Many of us were expecting to leave this year as graduates. Many of us were looking forward to graduating next year. We of the latter group are disappointed.

Missouri Wesleyan has long stood as a monument to Christianity and Education. There is no school which can be more proud of its achievements than Wesleyan. There have been graduates who have left upon this world an everlasting mark of their achievements, there are graduates who even now are placing names upon the lists of honor—never to be erased. There have been teams, athletic and forensic, which have carried aloft the names of Missouri Wesleyan and never once besmirched its fair countenance. There have been Gospel teams which have through words put love of God into the hearts of men, and Glee Clubs which have by the charms of music, unshackled the soul and left it free to search for the big things of life. All of these triumphs have been tempered with defeats, and all have intermingled, have twined and intertwined until there has been made a Wesleyan spirit which shall never die.

To some it might seem that the day of Missouri Wesleyan is over. It is not so, for even as she passes from one field of usefulness to another, a new day dawns and a great opportunity awaits. This community, this area can not long allow a school with such a glorious record to lose its standing in the educational sun. Missouri Wesleyan stoops only to rise, she accepts helps only to regain her strength.

Missouri Wesleyan, with tears of regret we bid thee farewell! To us, thou art the personification of education, religion, love, and school spirit. It is not easy to leave an old friend and to venture forth to search for new surroundings. But thou are an old friend indeed, and to thee can we always come and we shall return to thee—our Alma Mater!