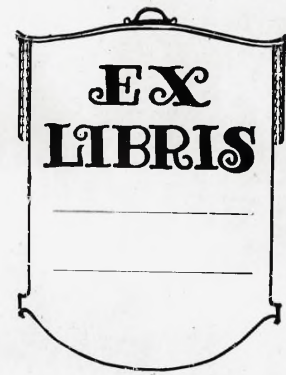


The image shows the front cover of a book. The cover is dark, possibly black or dark brown, with a textured, leather-like appearance. A central rectangular label with a red background is embossed into the cover. The label contains the text "The OWL" in a serif font. Below the label, there is a decorative, ornate frame containing the year "1930". The spine of the book is visible on the left side, showing some wear and the binding structure.

The OWL

1930

Miss Carrie F. Shubert  
101 1/2 West Third Street  
Cameron, Missouri



EX  
LIBRIS

\_\_\_\_\_  
\_\_\_\_\_

# The Owl

1930

Published by the

SOPHOMORE CLASS

of

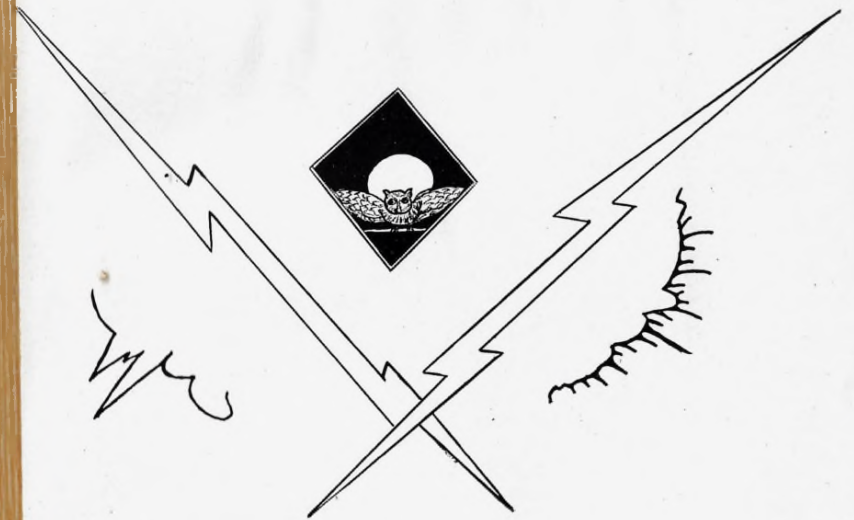
Missouri Wesleyan College

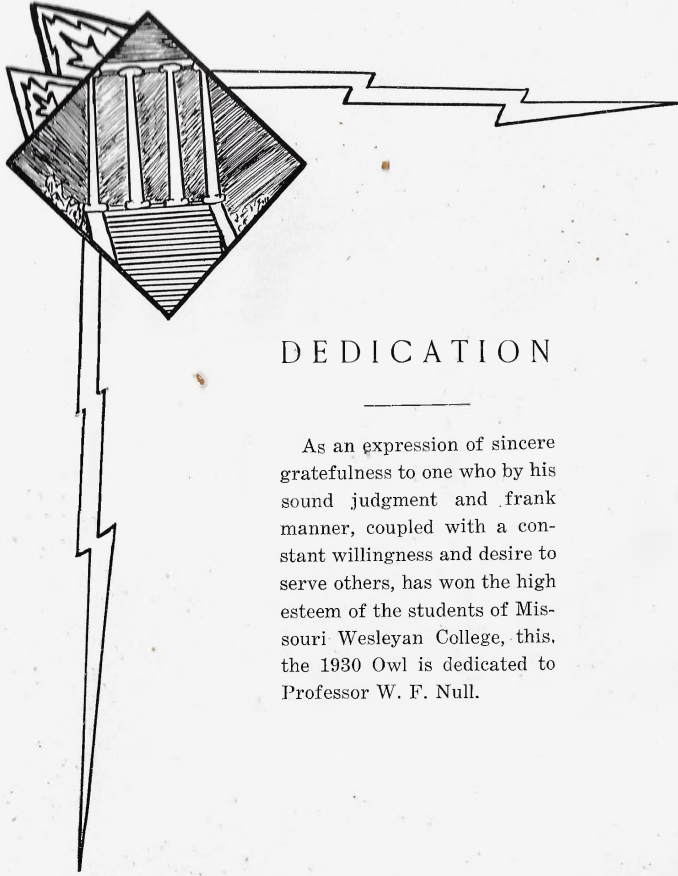
Cameron, Missouri

Permission to use material in  
this book may be obtained from:

ADAH MOORE  
Editor-in-Chief

WAYNE MAYES  
Business Manager

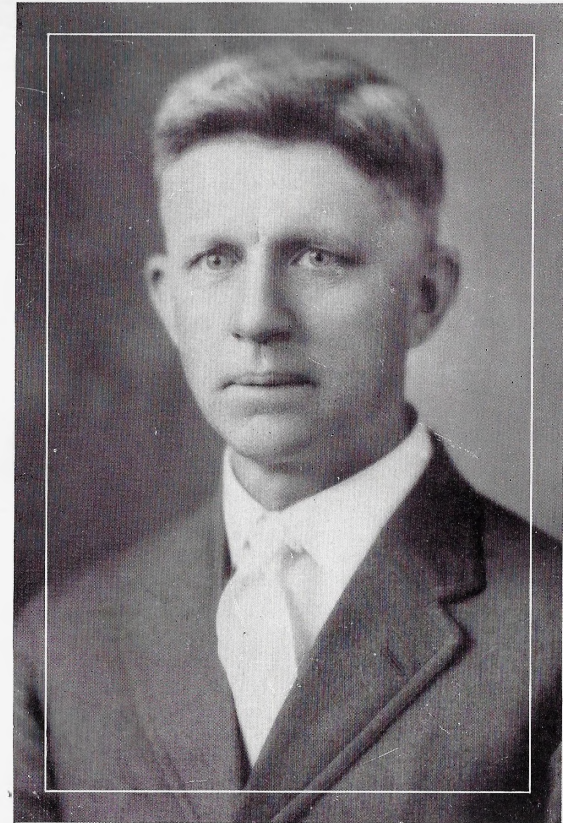




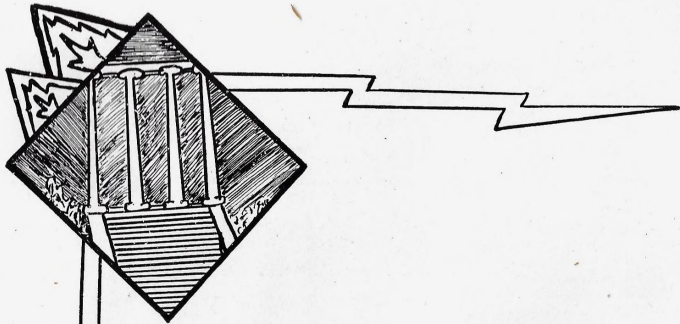
## DEDICATION

---

As an expression of sincere gratefulness to one who by his sound judgment and frank manner, coupled with a constant willingness and desire to serve others, has won the high esteem of the students of Missouri Wesleyan College, this, the 1930 Owl is dedicated to Professor W. F. Null.



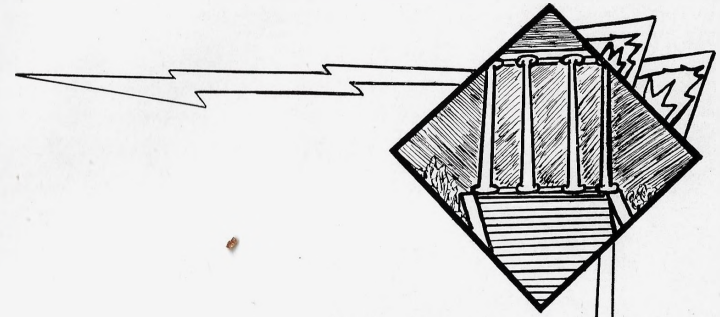
PROF. W. F. NULL



## FOREWORD

---

Striving to portray the new idea of things at Missouri Wesleyan College, endeavoring to vitalize the events of the year and make them long remembered by the students who took part in them; hoping that the book meets the approval of the group as a whole; we the Owl staff present this volume.



## ORDER OF BOOKS

---

- Book 1 - The College
- Book 2 - Athletics
- Book 3 - Activities

IN MEMORIAM

---



MILDRED BROWN

March 3, 1912

January 4, 1930

Taken from us by an untimely death, we can remember her only as we knew her; kind, cheerful and lovable to all.



A PLACE OF BEAUTY



THE PATHWAY TO KNOWLEDGE



OUR ALMA MATER

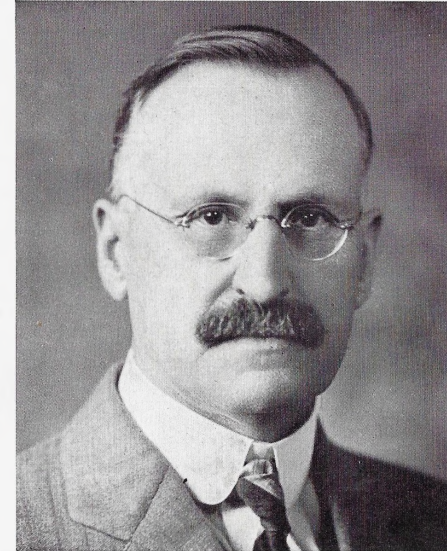




CAMPUS BEAUTY



College



PRESIDENT E. J. GALE

"Missouri Wesleyan College has had an honorable career. Making the most of limited resources, it has maintained high standards of scholarship and of life. It has sent out many sons and daughters to lives of helpful influence. No man can estimate the value of the contribution it has made to the advance of civilization and the progress of the Kingdom of God."

—E. J. Gale

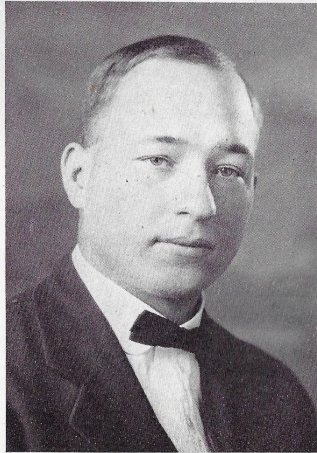
EXECUTIVE COMMITTEE



HON. H. F. LAWRENCE  
President of the Executive Committee  
*"Mr. Lawrence has proved his ability as a leader in the years of his service."*



DR. C. C. JAMES  
*"An integral part of our school's administration."*



DR. JOSEPH W. THOMPSON  
*"A conscientious friend, admired by all."*

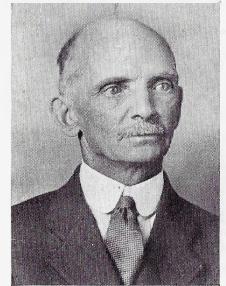


MR. C. P. DORSEY  
*"Interested in M. W. C., and works for it."*



MISS MILDRED HARRISON  
Secretary of the College  
*"An efficient secretary, well-liked by all the students."*

REV. J. J. COKELY  
Field Secretary  
*"Personification of a good business man."*





MR. A. J. ALTHOUSE

*"A staunch friend and supporter of our college."*

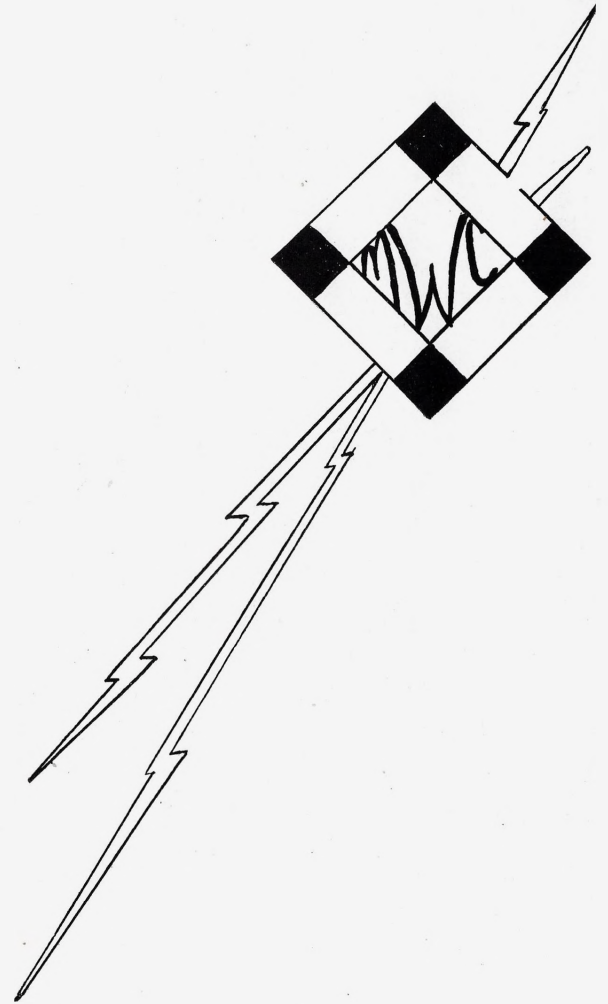


HON. F. B. KLEPPER

*"He has worked for Missouri Wesleyan many years."*

MR. G. A. SHEPHERD

*"A sincere booster of the institution."*



FACULTY



D. L. DALKE, A.B., M.A.  
Dean of College; Professor of Social Science

"Our Dean has endeared himself to all of us students of Missouri Wesleyan, because of his loyal spirit, his sense of humor, his interest in us and our welfare, and his faith in us. He works unceasingly for the college, yet keeps that well known smile."



DMAUDE GIBSON, A.B., B.S., M.A.  
Education and Latin

*"Conscientious, untiring, she is the student's friend."*

\* \* \*

P. D. PAXSON, A.B., M.S.  
Physics and Chemistry

*"Leads us through the mazes of science and makes it interesting."*

\* \* \*

OCORINNE GARNER, A.B., M.A.  
English

*"Her interpretation of literature adds much to its beauty."*

\* \* \*

EVELYN RANSOME, A.A., A.B.  
Head of Piano Department

*"Her musical ability is to be admired."*

\* \* \*

CARRIE F. SHEPHERD  
Librarian and Art Director

*"She possesses an appreciation of art—and of human nature."*

\* \* \*

BLANCHE DEEM SHIPP  
Music B. - Piano

*"A charming musician of rare ability."*

\* \* \*

DR. JOSEPH THOMPSON  
New Testament History

*"A steadfast worker in his chosen field."*



DW. F. NULL, A.B., A.M.  
Mathematics and History

*"\* \* \* And still the wonder grew  
That one small head could carry all he  
knew."*

\* \* \*

LESTER G. SLAYTON, A.B.  
Director of Physical Education

*"The best of the fight is in the stay-  
ing."*

\* \* \*

M. JEANNETTE MARKS  
A.B., B.S., M.A.  
French and German

*"Knows and stresses the beauty and  
value of foreign languages."*

\* \* \*

MRS. LESTER G. SLAYTON  
Music B. - Voice

*"There's music in all things if men  
had ears."*

\* \* \*

KATIE B. GAY, B.A., M.A.  
Biological Sciences

*"Possesses a true appreciation of Na-  
ture's beauty, and has a rare human in-  
terest."*

\* \* \*

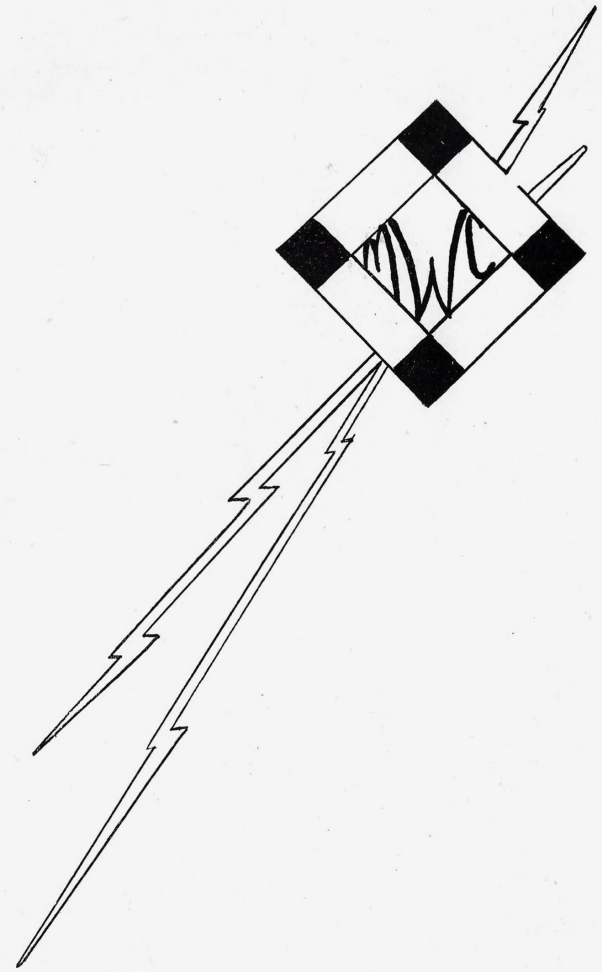
MRS. A. W. AYERS  
Dean of Women

*"Strives to be a mother to every girl  
who is under her care during the school  
year."*

\* \* \*

MRS. ROLAND WILLIAMS, A.B.  
Graduate Currie School of Expression,  
Boston  
Expression

*"True expression comes from inward—  
outward."*



SOPHOMORES

John A. Lippitt  
Meadville

Pres. Student Body; P. s. Adelphean; "Owl" Staff; French Club; Alchemist Club; Choral Club; Y. M. C. A.

"Gives to every activity an impetus."



Irene Shirts Bernard  
Cameron

Editor-in-Chief "Criterion" first sem.; Pres. French Club; Pres. Pep Squad; Ruthean; "Owl" Staff.

"She is a quiet seeker after knowledge."

Adah Moore  
Kansas City

Editor-in-Chief "Owl" first sem.; Pres. Ruthean first semester; Pres. Alchemist Club, first sem.

"An acute intellect coupled with nobility of thought and character."



Wayne Mayes  
Cameron

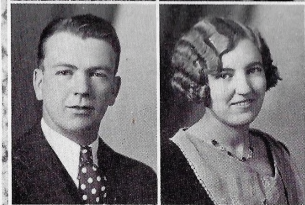
Adelphean; Business Manager "Owl"; French Club.

"An unusual combination of all that makes a good fellow."

D. G. L. Yetter  
Grant City

Pres. Excelsiors, first sem.; Y. M. C. A. Cabinet; Football Letterman; "W" As'sn.

"Shorty" says less in more words than any man on the campus."



Lucille Thompson White  
Amity

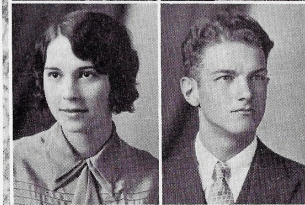
Pres. Aesthetians first sem.; Sec'y-Treas. Choral Club sec. sem.; Y. W. C. A. Cabinet.

"She is jolly and kind to all she meets."

Mary Miner  
Carrollton

Pres. Y. W. C. A.; "Owl" Staff; French Club; Aesthetian; Choral Club; Minis. Alliance.

"Her studies are great but her activities are greater."



Richard Foor  
Meadville

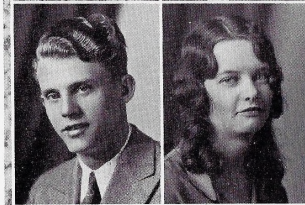
Excelsior; "Owl" Staff; French Club; Alchemist Club; Y. M. C. A. Cabinet; Football Letterman; "W" As'sn; Basketball Letterman; String Quintet.

"He belongs to the bachelor's club."

Glenn Carter  
Meadville

Pres. Y. M. C. A. first sem.; Excelsior; "Criterion" Staff; Alchemist Club; Ministerial Alliance.

"Nick" made famous by his "Lament."



Mildred Kelsey Shultz  
Cameron

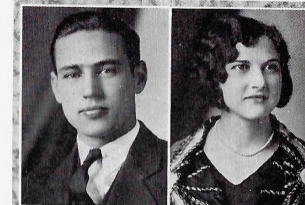
Aesthetian; "Owl" Queen; Vice-Pres. Choral Club; French Club; Pep Squad; Chorister Student Body; Ladies' Trio; Ladies' Quartet.

"A musician rare and a student too."

Forrest Kellogg  
Cameron

Excelsior; Pres. Forensic Club; Pres. Minis. All. second semester.

"Finds in duty done a full reward."



Margaret Newton  
Jameson

Aesthetian; Choral Club; Y. W. C. A. Cabinet; Ministerial All.

"A smile for everyone."

Mary Mason  
Amity

Aesthetian; French Club; Choral Club; Ladies' Quartet; Pep Squad; Sec'y Soph. Class; Sec'y Treas. Student Body.

"Her black eyes speak, and they speak well."



Victor Froman  
Kearney

French Club; Pres. Minis. All. first sem.; Y. M. C. A.; Alchemist Club.

"Duty first—pleasure last."



Margaret Grimes  
Union Star

Aesthetian; French Club; Choral Club; Y. W. C. A.; "Criterion" Staff; Pep Squad.

"She lets others talk but she is as wise and appreciative as they."

Virginia Seymour Nello  
Lathrop

Ruthean; Pep Squad.

"Yes, she does seem interested in that creature called man."



Ferrill Collings  
Newtown

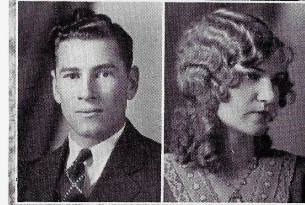
Excelsior; Choral Club; Y. M. C. A.; Football Letterman; Pres. "W" As'sn; Basketball Letterman.

"Foot" is always the same—the best ever."

Gaylord Rybolt  
Grant City

Adelphean; Alchemist Club; Choral Club; Football Letterman; "W" As'sn.

"What are halls for if not to linger in?"



Katherine Gale Rybolt  
Cameron

Pres. Aesthetians, sec. sem.; "Criterion" Staff; French Club; Pep Squad; Y. W. C. A. Cabinet.

"A girl of varied interests."

T. Louis Kanan  
Cameron

Vice-Pres. Adelp-  
hians; Football Letter-  
man; "W" As'sn.

"Shanty" is an in-  
dispensable three-letter  
athlete."

Faye Ganfield  
Jamesport

Aesthesian; French  
Club; Pep Squad; Al-  
chemist Club; Choral  
Club; Mixed Quartet.

"Favors the 'Dorm.'  
girls with giggling so-  
los."

Ward L. Sheldon  
Cameron

Adelphian; Football  
Letterman; "W" As'sn;  
Basketball Letterman.

"M's are good, S's  
are better, but I've never  
tried the E's."

Lydia Faye Bryan  
Breckenridge

Aesthesian; French  
Club; Pep Squad; Y.  
W. C. A.

"She has red hair  
but still she's sweet-  
tempered."

Lester Macrae  
Cameron

Pres. Choral Club;  
sec. sem.; Minis. Al-  
liance.

"He found that it  
was not good for man  
to be alone."



Jessie Robbins Spickard '77

Aesthesian; French  
Club.

"Modest about some  
things, others would be  
vain over."

Gerald Riepe  
Kansas City

Adelphian; Football  
Letterman; "W"  
As'sn.

"We can say this for  
him—he's a good sport,  
and an athlete."

Bernice Allen  
Bogard

Aesthesian; French  
Club; Pep Squad; Y.  
W. C. A.

"Man is no match  
for woman where mis-  
chief reigns."

Robert Fox  
Lathrop

Vice-Pres. Excelsior  
first sem.; Pres. Excels-  
sors, sec. sem.; Foot-  
ball Letterman; "W"  
As'sn.

"A dandy good fel-  
low when you know  
him."

Eleanor Ward  
St. Joseph

Aesthesian; Minis.  
Alliance; Y. W. C. A.;  
Forensic Club.

"Not like most girls;  
when she talks, she says  
something."

Roy Wilson  
Grant City

"Owl" Staff; Al-  
chemist Club; Football  
Letterman; Basketball  
Letterman; "W" As'sn.

"'Doe' needs no en-  
cology; he speaks for him-  
self."

Roy Gregory  
Hamilton

Excelsior; French  
Club; Alchemist Club;  
Basketball Letterman;  
"W" As'sn.

"Keen intelligence  
and ready wit, with  
modesty to go with it."

Virgil F. Young  
Cameron

Y. M. C. A.; Minis-  
terial Alliance.

"Steadfast labor has  
its own reward."

Chester Ferguson  
Cameron

Adelphian.

"A fair maid smiled  
at me—once."

Cecil Hays  
Amity

Excelsior; Alchemist  
Club; Y. M. C. A.

"Generally make  
7:45 classes, if it comes  
handy."



Katherine Caldwell  
Cameron

Aesthesian; Y. W. C.  
A. Minis. Alliance.

"Life holds forth a  
great promise to the  
maiden who is faithful  
and amiable."

Herndon Mullenix  
Cameron

Adelphian; "Owl"  
Staff; Alchemist Club.

"Studious, and al-  
ways ready to perform  
the tasks set before  
him."

Margaret Morse  
Breckenridge

Aesthesian; French  
Club; Choral Club; Y.  
W. C. A. Cabinet.

"Industrious, agree-  
able, and always willing  
to do her part."

Stewart Castle  
Stewartville

Excelsior; Y. M. C.  
A.

"Terribly inconven-  
venient to have those  
ever-beaming rosy  
cheeks."

Hadley Callaway  
Ravanna

Excelsior; Alchemist  
Club; Football Letter-  
man; "W" As'sn.

"Get 'em young,  
treat 'em rough, and  
tell 'em nothing."



## Thinking

If you think you are beaten—you are  
If you think you dare not—you don't  
If you'd like to win, but you think you can't  
It's almost a cinch that you won't.  
If you think you will lose—you're lost  
For out of the world we find  
Success begins with a fellow's will  
It is all in the state of mind.  
If you think you are outclassed, you are  
You have got to think high to rise.  
You've got to be sure of yourself  
Or you can never win a prize.  
Life's battles don't always go to the strongest  
or fastest man  
But sooner or later the man that wins  
Is the one who *thinks* he can.

## Highways

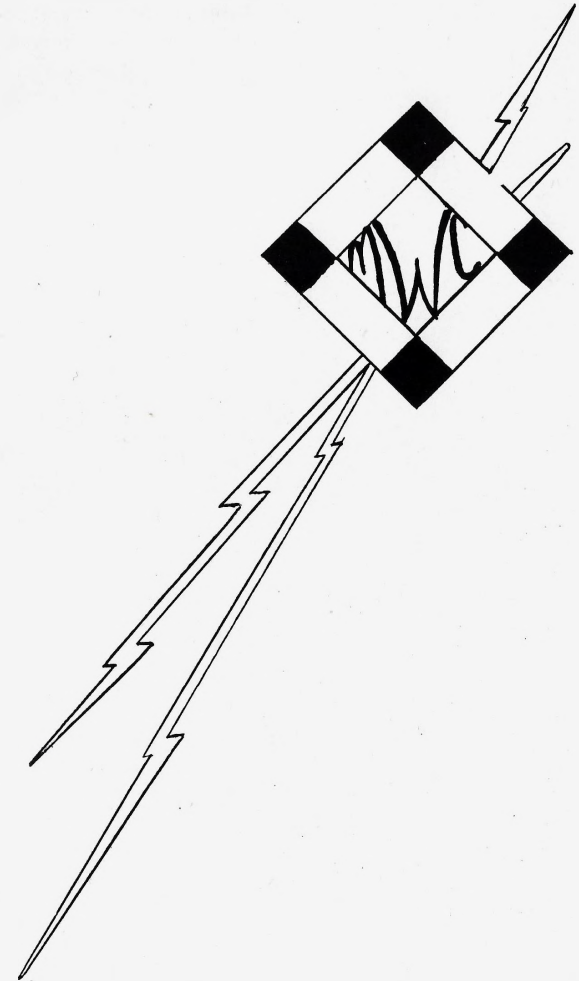
All day the motors droning past  
In merry wanderlust  
Sing one familiar song to me  
Then vanish in the dust.

"A road that takes you 'round the world  
Is handy by your door  
You'll find it smooth for many miles,  
And rough for many more.

"The road is old, and you are young;  
Come out and choose your star!  
Each mossy milestone left behind  
Will prove the man you are."

All night the cars go droning past  
In conquest of the dawn.  
I will not hear their chant again—  
Tomorrow I'll be gone!

—Ralph Emerson Hackett

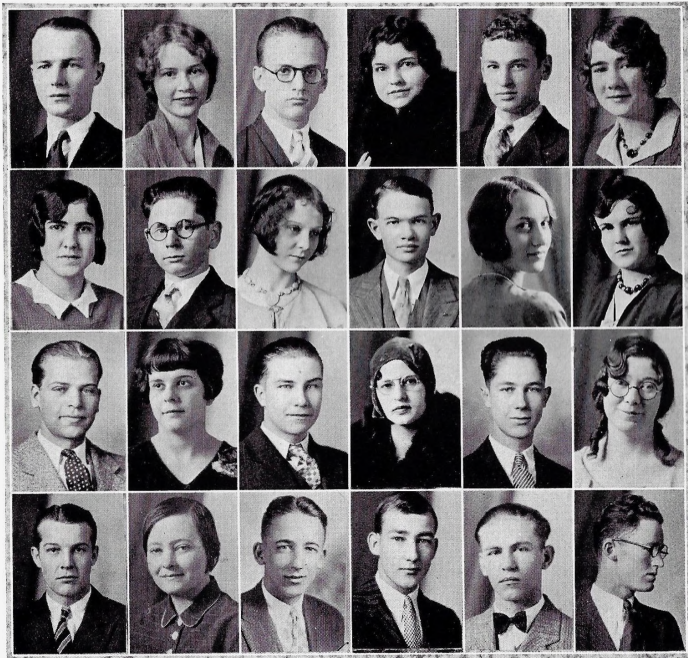


FRESHMEN



Dorsey	Brower	Shaw	Walker	Benson	Whiteaker
Fender	Morton	Foster	Knoch	McQuillin	Nichols
Beckwith	Browning	Martin	Atwood	Nelson	Bruner
Bird	Todd	King	Calhoun	Theilmann	Wilson

- DENNIS DORSEY Cameron  
President Freshman Class first semester; Business Manager "Criterion"; Excelsior; Business Manager Choral Club; Secretary-Treasurer Y. M. C. A. second semester; President Alchemist Club second semester; Secretary French Club; Secretary "W" Association; Football Letter; String Quintet.  
D-ecorous D-iscreet.
- AILENE BROWER <sup>Atwood</sup> Cameron  
Aesthesian; French Club; Captain Pep Squad; Y. W. C. A.; Yell Leader; Ladies' Quartet; Pianist for Men's Quartet.  
A-ble B-rilliant.
- ESTHER SHAW Cameron  
Aesthesian; Associate Editor "Criterion"; French Club.  
E-arnest S-incere.
- J. T. WALKER Holt  
Excelsior; French Club; Basketball Letterman; "W" Association; Football Letterman.  
J-olly T-all W-inning.
- MARY BENSON St. Louis  
Ruthean.  
M-erry B-right.
- ELIZABETH WHITEAKER Cameron  
Aesthesian; "Criterion" Staff; French Club; Choral Club; Y. W. C. A.; Pep Squad.  
E-nergetic W-orthy.
- VELTA FENDER Jamesport  
Aesthesian; "Criterion" Staff; Y. W. C. A.; French Club.  
V-ivacious F-avored.
- MAE MORTON Cameron  
Ruthean; French Club; Pep Squad.  
M-arvelous M-indful.
- JESSE FOSTER Cameron  
Secretary Excelsiors second semester; French Club; "Criterion" Staff; Librarian Choral Club; Men's Quartet; Y. M. C. A.  
J-oyous F-avored.
- GUENAVERE KNOCH <sup>Walker</sup> Cameron  
Aesthesian; French Club; Choral Club Reader; Secretary-Treasurer; Biology Club; Pep Squad; Y. W. C. A.  
G-racious K-ind.
- D-DOROTHY M. McQUILLIN Hamilton  
Aesthesian; French Club; Pep Squad; Y. W. C. A.  
D-eserving M-erry.
- JAMES NICHOLS Amity  
Adelphian; Alchemist Club.  
J-ovial N-oisy.
- D-ORVILLE BECKWITH Wheeling  
Excelsior; Choral Club; French Club; Y. M. C. A.  
O-bliging B-usy.
- EDNA BROWNING Avalon  
Aesthesian; President Freshman class second semester; French Club; Choral Club; Pep Squad.  
E-stimable B-usy.
- LILA JANE MARTIN <sup>Duncan</sup> Osborn  
Aesthesian.  
L-aughing M-erry.
- JOHN ATWOOD Overland Park, Kans.  
Football Letterman; "W" Association; Basketball Letterman.  
J-esting A-wake.
- HELEN NELSON <sup>Chenhalt</sup> Cameron  
Aesthesian; French Club; Alchemist Club.  
H-appy N-oisy.
- MYRTLE BRUNER <sup>Redd</sup> Pattonsburg  
Aesthesian; Y. W. C. A.  
M-annerly B-ashful.
- BURLAH BIRD <sup>Warner</sup> Cameron  
Ruthean; Pep Squad.  
B-right B-ewildering.
- VIRGINIA TODD Turney  
Aesthesian.  
V-igorous T-emperate.
- CLARK KING Bethany  
Adelphian; Forensic Club; Y. M. C. A.; Ministerial Alliance.  
C-heerful K-ind.
- DOROTHY CALHOUN <sup>Trenman</sup> Cameron  
Aesthesian.  
D-iscreet C-lever.
- AMELIA THEILMANN <sup>Badrent</sup> Cameron  
Aesthesian; French Club; Choral Club.  
A-dmirable T-alented.
- MURL WILSON Lemons  
Ministerial Alliance.  
M-annerly W-ary.



W. Olson	DeShon	Crawford	Edwards	Cater	F. Olson
Boyel	Dodson	Everett	Groebe	Crow	Jones
Wright	Gilliland	Russell	Towns	Irwin	Harmon
Farris	Brown	Whiteaker	McClure	Francisco	Barnette

- |  |             |   |           |
|--|-------------|---|-----------|
| WARD OLSON<br>Excelsior; "Criterion" Staff; French Club; Choral Club.<br>W-orthy O-dd.   | Maysville   | JOHN WRIGHT<br>Alchemist Club.<br>J-olly W-orthy.   | Ravanna   |
| LOUISE DeSHON <sup>Warner</sup><br>President Rutheans second semester; French Club; Pep Squad.<br>L-adylike D-ainty.   | Cameron     | LOUISE GILLILAND <sup>Chatten</sup><br>Aesthesian; "Criterion" Staff.<br>L-ucky G-racious.  | Cameron   |
| WILFORD CRAWFORD<br>Excelsior; French Club; Choral Club; Men's Quartet; Yell Leader.<br>W-orthwhile C-heerful.   | Cameron     | JAMES RUSSELL<br>Excelsior; Alchemist Club; Choral Club; Men's Quartet.<br>J-ocund R-estless.   | Cameron   |
| ELMA EDWARDS<br>Aesthesian; French Club; Y. W. C. A.<br>E-stimable E-nergetic.   | Bethany     | VIRGINIA TOWNS <sup>Chatten</sup><br>Aesthesian; French Club; Y. W. C. A.<br>V-erdant T-emperamental.   | Bethany   |
| MAURICE CATER<br>Excelsior; French Club; Alchemist Club; Choral Club; Y. M. C. A.; Basketball Letterman; "W" Assosiation; String Quintet.<br>M-annerly C-ynical. | Cameron     | RICHARD IRWIN<br>Excelsior; Alchemist Club; French Club; Basketball Letterman; "W" Assosiation.<br>R-etiring I-nspired.   | Hamilton  |
| FERN OLSON<br>Aesthesian French Club; Y. W. C. A.; Ministerial Alliance; Pianist Student Body; String Quintet.<br>F-aitiful O-utshining.                         | Kansas City | EVA HARMON <sup>Seaton</sup><br>Y. W. C. A.<br>E-ager H-appy.   | Worth     |
| JUNE BOYEL<br>Aesthesian; French Club; Pep Squad; Y. W. C. A.<br>J-ovial B-usy.  | Bosworth    | WM. R. FARRIS<br>Adelphian; French Club; Football Letterman; Basketball Letterman; "W" Assosiation.   | Cameron   |
| EMMETT DODSON<br>Y. M. C. A.<br>E-ntertaining D-evoted.  | Ludlow      | MILDRED BROWN<br>Ruthean; French Club; Pep Squad.<br>M-erry B-rilliant.   | Cameron   |
| WINONA EVERETT <sup>Seaton</sup><br>Aesthesian; French Club; Y. W. C. A.<br>W-illful E-ndeavoring.   | Winsten     | DONALD WHITEAKER <sup>Cameron</sup><br>Excelsior; French Club; Alchemist Club; Choral Club; Y. M. C. A.; Honorary Football Letterman.<br>D-eserving W-inning.       | Maysville |
| JOHN GROEBE<br>Excelsior; Alchemist Club; Y. M. C. A.<br>J-udicious G-enial.   | Cameron     | ADRIAN McCLURE<br>Excelsior; Y. M. C. A.<br>A-ntagonistic M-indful.   | Holt      |
| BLANCHE CROW <sup>Conners</sup><br>Aesthesian; String Quintet; Choral Club.<br>B-etter C-apable.   | Cameron     | BYRON FRANCISCO<br>Excelsior; Y. M. C. A.<br>B-ashful F-avorite.  | Ludlow    |
| LUCILLE JONES <sup>Lang</sup><br>Aesthesian; Choral Club; Pep Squad; Y. W. C. A.; French Club.<br>L-ikeable J-oyous.   | Hamilton    | DUANE BARNETTE<br>Excelsior; Forensic Club; President Biological Science Club; French Club; Y. M. C. A.; Football Letterman; "W" Assosiation.<br>D-isdainful B-usy. | Wheeling  |



Watson

Van Winkle

Witt

Trice

FRANCES WATSON Weaver Cameron  
 Ruthean; Pep Squad.  
 F-unny W-insome.

DEMMA WITT Fulk Cameron  
 Ruthean; French Club.  
 E-ntertaining W-ary.

JAMES VAN WINKLE Cameron  
 Excelsior; Choral Club; French Club;  
 Men's Quartet.  
 J-olly V-ain W-orthy.

EUGENE TRICE Cameron  
 Excelsior; President Y. M. C. A. second  
 semester; Editor-in-Chief "Criterion"  
 second semester.  
 E-xceptional T-alkative.

TO MILDRED BROWN

As sweet as a rose in the spring,  
 For a few brief moments you came;  
 Then left like a bird on the wing,  
 And life has been never the same.

Nobody now sits in your place,  
 And silent the voice that we knew;  
 And we miss the smile on your face,  
 The charm and laughter of you.

For some one is gone that we cherished,  
 And sunshine is fled from the day.  
 Yes, gladness within our hearts perished  
 The evening that you went away.

—A Classmate.

ART DEPARTMENT

Carrie F. Shepherd, Instructor

"What we call Art springs from a desire to make things 'look well'. The raw materials may be put together in a rude way, for mere use or may serve a higher use by being put together in a fine way, satisfying a strong desire of human nature. This finer way means ability to make the best choice—and this comes from the trained judgment. The history of Art development shows that whenever the workers constantly improved upon proportion, tone, and color, there was growth into fine Art. The simple process of adapting forms to spaces began with painting on clay bowls and carving the handles of utensils or weapons—and ended in Greek sculptures, the Gothic cathedral, the mural paintings."

EXPRESSION DEPARTMENT

Mrs. Roland Williams, Instructor

SENIORS

Josephine Hulett  
 Jessie Robbins

The aim of this department is to give the students good diction, correct posture and ability to express their thoughts and emotions through a fine and proper use of voice and body. The work is offered not only to the student of talent, but also to the student who needs development of individuality and character.

Vocal expression centers in thinking as expressed through modulations of the voice and body. Voice training is pursued for right tone production and for improvement of speech. The story was one of the earliest forms of developments of literature. To tell a story well is the foundation of all public speaking, public reading and acting. Platform presentations are given by the student of different forms of literature.

Membership in the Theta cast of Alpha Psi Omega is the goal of the best dramatic talent in the college. The Dramatic Club will present "Peg O' My Heart" by J. Hartley Manners in May. Miss Josephine Hulett will play the part of Peg.

Missouri Wesleyan Conservatory of Music.

Evelyn Ransome, Head of Department

The faculty of the Conservatory of Music extends greetings to the many friends of Missouri Wesleyan College, to students, and to all who are interested in music.

For years Missouri Wesleyan College has had a high reputation for its instruction in music, a reputation sustained today by the superior advantages offered by both vocal and instrumental music.

The Conservatory aims not only to give the students instruction by able teachers who use the most modern and approved methods, but also to surround each student with an atmosphere of fine musical sincerity and appreciation, which shall be at once a stimulus and a discipline. The faculty is composed of musicians of liberal education and wide experience, who are devoted to their profession and in sympathy with the needs of each student. The courses of study are comprehensive, abreast of the times, and strictly adhered to.

In addition to our senior department the Conservatory maintains a junior or preparatory piano department, with Miss Blanche Deem as director, which has for its aims the thorough instruction of young children in the grades and young people of high school age in the art of piano playing and the laying of a solid foundation for a complete musical education.

Aside from the regular applied music and theoretical courses we have various musical organizations to stimulate the interest of students, also to afford varied talent for recital and concert work. The Choral Club, under the direction of Mrs. Lester G. Slayton, head of the voice department, is composed of all voice students and others who are especially interested and capable. This organization has furnished programs for assembly and the radio and is in demand for many public appearances both in and out of Cameron. The String Quintet is an ensemble composed of four violins and piano, and is supervised by Evelyn Ransome, Director of the Conservatory. The value of instruction in music is greatly enriched by the training in public work that such an ensemble organization affords.

We have other no less splendid organizations, such as the Mens' Quartet, Ladies' Quartet and Ladies' Trio, all chosen by the director of voice for their superior voice control, ability to harmonize their voices and to read music. It is our policy to afford students every possible opportunity for work along musical lines and to foster the musical activities of the college.



**athletics**

THE OWL



Top Row—Long, Irwin, Cater, Foor, Slayton (Coach).  
Second Row—Riepe, Gregory, Wilson, Walker, Atwood, Sheldon,  
Dorsey.  
Third Row—Yetter, Collings, Callaway, Farris, Barnette, Fox.

“W” ASSOCIATION

In order to belong to the “W” Association one must have received a letter for participating in some form of intercollegiate athletic contest.

THE PEP SQUAD



Top Row—Boyel, DeShon, Seymour, Mason, Kelsey, Shirts, Gale, Watson.  
Second Row—Jones, Morton, Knoch, Whiteaker, Ganfield, Bryan, Thompson, Brower, (Captain).  
Third Row—Bird, Allen, Grimes, Browning, McQuillin, Lawrence, Brown.



FOOTBALL SEASON OF 1930

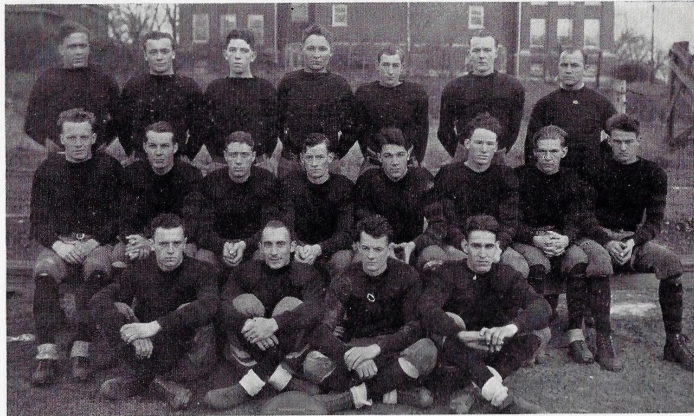
The fact that the Owls took the short end of the score does not discredit them from ranking as a good team. Their fighting ability, sportsmanlike conduct, and undaunted spirit causes us to rank them among the best. For a team that suffered from handicaps and battled against odds we believe they could not be surpassed. We feel proud of this team that went through the drudgery and monotony of practice and bore defeat with a S-M-I-L-E.

The "OWLS" faced a most strenuous schedule. Although handicapped by inexperience, injuries, and an insufficient number of substitutes they met each opposing team. Under the direction of Coach Slayton, with "Shanty" Kanan, a double threat at quarter and half-back; "Hoot" Collings, the flashy halfback; "Vici" Sheldon, another triple threat at full-back, who also played end and tackle positions; "Doc" Wilson, the shifty quarterback; "Dick" Foor, a hard hitting halfback; Gaylord Rybolt, a fast ball lugger and Donald Whiteaker, who won his honorary letter as full-back in the Chillicothe game, the "OWLS" had a fast and hard hitting back-field. And with such men as "Bill" Farris, a most accurate passer, at center; Gerald Riepe and John Atwood, tackles; Walker and Callaway, two fast and hard fighting ends; Yetter and Fox, two unpassable guards; "Bob" also played end; and Dorsey and Barnette, two willing spirited guards, Wesleyan had a good defensive and offensive line; they not only met each scheduled game but gave each opponent a hard fight.

The "OWLS" of '29 were as hard fighting, as good sportsmen and as willing spirited as any team in the history of the school. Although the season was not a phenomenal success the team was the only one in the M. S. C. to cross the champion's goal line. The "OWLS" held the champions of Iowa Senior Colleges to a comparatively low score.

The Kansas City Star and Times in its selection of the all conference team, bestowed personal honors upon the following "OWLS;" Louis Kanan as all conference halfback; Gerald Riepe and Ward L. Sheldon, honorable mention as tackles and William Farris received the same honor at center. Aside from this, the team honored Farris by electing him Honor Captain at the end of the season on his merits as a leader and his value to the team. They also conferred honor upon John Atwood by electing him captain of the "OWLS" of 1930.

These men: Sheldon and Kanan, two year letter men; Collings, Riepe, Fox, Yetter, Callaway, Wilson, Foor, and Rybolt, one year letter men; will be greatly missed from next year's team.



Top Row: Callaway, Dorsey, Beckwith, King, McClure, Olson, Slayton (Coach);  
 Second Row: Riepe, Farris, (Capt.) Sheldon, Kanan, Atwood, (Capt. Elect)  
 Barnette, Francisco, Foor.  
 Third Row: Fox, Wilson, Collings, Walker.



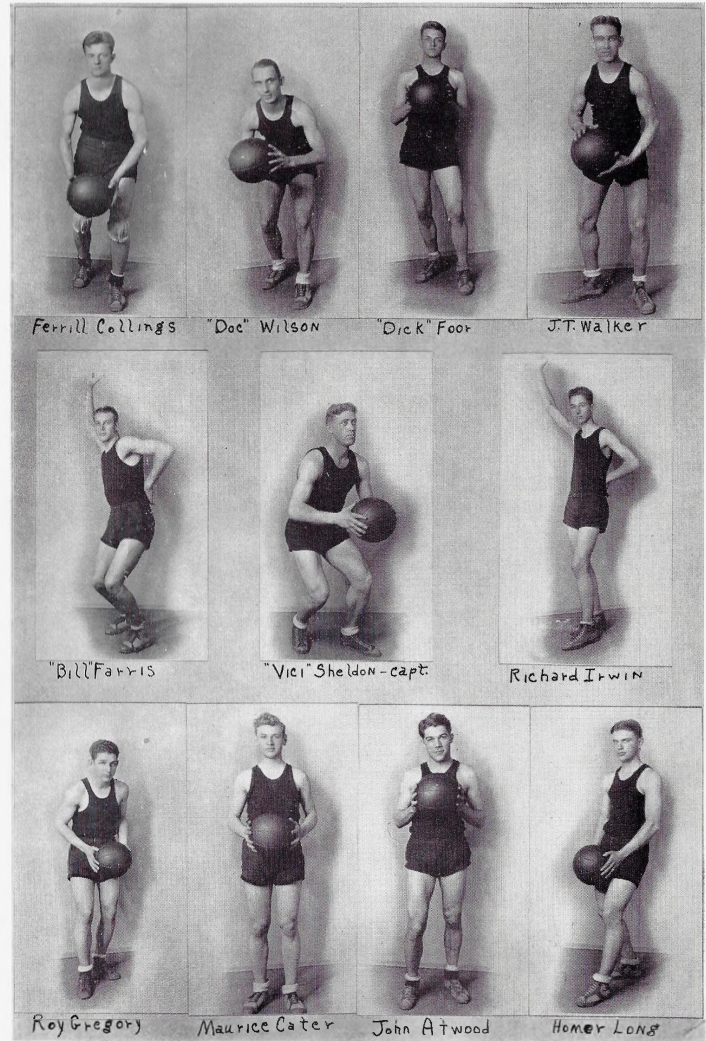
Lester G. Slayton  
 Coach

Picture omitted from  
 page of football letter-  
 men through error of  
 staff.



Ferrill Collings

"Coach", well-known to his teams, al-  
 ways talking for clean sportsmanship;  
 his motto, "For when the one great  
 Scorer comes, to write against your  
 name, He writes, not that you won or  
 lost, but how you played the game."  
 He was an all round athlete when he  
 was in college here, and has done his  
 best to uphold the athletic ideals of  
 Missouri Wesleyan.



Ferrill Collings "Doc" Wilson "Dick" Foor J.T. Walker

"Bill" Farris "Vic" Sheldon - capt. Richard Irwin

Roy Gregory Maurice Cater John Atwood Homer Long





Top Row—Gregory, Long, Walker, Kellogg, Wilson, Farris.  
Second Row—Atwood, Irwin, Slayton (Coach); Cater, Foor.  
Third Row—Riepe, Sheldon (Captain); Collings.

## BASKETBALL RESUMÉ

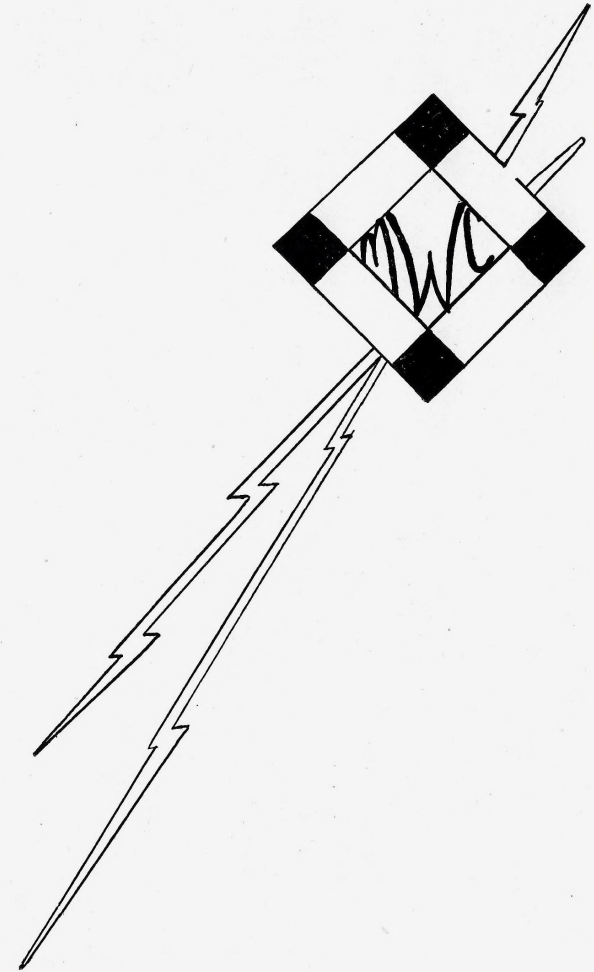
Although the season could not be spoken of as being a phenomenal success, yet each member of the team deserved credit for his work and ability.

Throughout the season Wesleyan was handicapped by a weak offensive drive, but near the close of the season the offensive work of Collings and Wilson was outstanding. Wesleyan was also weak at center, for in no game did we have complete control of the tip-off. In defensive work Wesleyan was outstanding, for we had some of the best guards in the conference.

The success the team did meet with we owe to Coach Slayton and the faithful work of the squad. The following men received letters: Capt. Sheldon and Collings, two years, and the following one year: J. T. Walker, Richard Foor, Roy Wilson, Roy Gregory, Homer Long, Wm. R. Farris, John Atwood, Maurice Cater, and Richard Irwin.



# activities



ORGANIZATIONS



Top Row—Moore, Seymour, Shirts, Ransome.  
Second Row—Brown, Morton, Bird, Benson, DeShon, Witt.

### RUTHEAN LITERARY SOCIETY

Motto—"Vita sine litteris mora est."

Colors—Cardinal and Straw

Flower—Red Rose

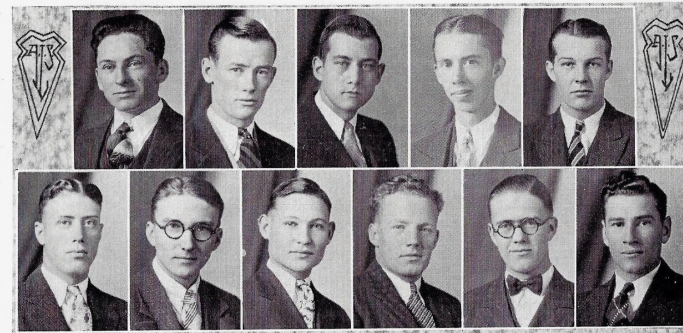
Although lacking in numbers this year, we had much of the old Ruthean spirit, and as the saying goes, tried to "make up in quality what we lacked in quantity."

The annual Ruthean-Adelphian reception for new students was held October 7 at Rice Hall. About two weeks later, pledge day was held for all societies. The new girls proved themselves good sports and willing workers at the initiation, which was carried out in all weirdness at the Ruthean Hall, after a line party at the Ritz Theatre. Although the initiation lasted twelve hours, all came through it with colors flying, and the proper Ruthean spirit instilled. On the next regular meeting night, formal initiation occurred, and the pledges became truly Rutheans.

Another activity which the society sponsored was the football banquet, held at the Hotel Cameron, at the close of the season.

We are all planning on the joint banquet to be held in March, as an affair of great interest, and as a meeting of new members and old.

Our year has been a successful one, but we are much saddened by the death of one of our members, Mildred Brown, and greatly miss her cheery face and laughing voice from our hall.



Top Row—Lippitt, Kanan, Mayes, Mullenix, Farris.  
Second Row—Sheldon, Ferguson, King, Riepe, Nichols, Rybolt.

### ADELPHIAN LITERARY SOCIETY

Motto—"Esse Quam Videri."

Colors—Blue and White.

Flower—Hyacinth

"Once an Adelphian, always an Adelphian," is not a boast, but reflects the true spirit of the Adelphian Literary Society. It creates in the members of the society a devotion to the society brothers, and to Missouri Wesleyan.

Our motto: "Esse Quam Videri;" to be rather than to seem, is the one ideal that we try to live up to. We have endeavored to be unassuming, and give to M. W. C. our very best.

The Adelphians have been amply represented in athletics, forensics, music and all other activities.

We are joining with our sister society, the Rutheans, in the annual spring banquet and are looking forward to it with much pleasure.



Second Row—Shaw, Bryan, Olsen, Robbins, Edwards, Ganfield.  
 Third Row—Whiteaker, Ward, Grimes, Fender, Miner, Morse.  
 Top Row—Thompson, Mason, Newton, Gale, Kelsey, Allen.

### AESTHESIAN LITERARY SOCIETY

Motto—"Be not satisfied with present attainments, for when growth ceases, decay has already begun."

Colors—Purple and Gold.

Flower—Purple Aster and Goldenrod

First Semester	Officers	Second Semester
Lucille Thompson	President	Katherine Gale
Katherine Gale	Vice-President	Mary Mason
Margaret Newton	Secretary	Bernice Allen
Mary Miner	Treasurer	Louise Gilliland
Mary Mason	Pianist	Ailene Brower
Margaret Grimes	Chorister	Mildred Kelsey
Eleanor Ward	Chaplain	Katherine Caldwell
Faye Ganfield	Curators	Velta Fender
Mildred Kelsey	Faculty Advisor	Edna Browning
Bernice Allen		Dorothy Calhoun
Miss Garner		Miss Garner

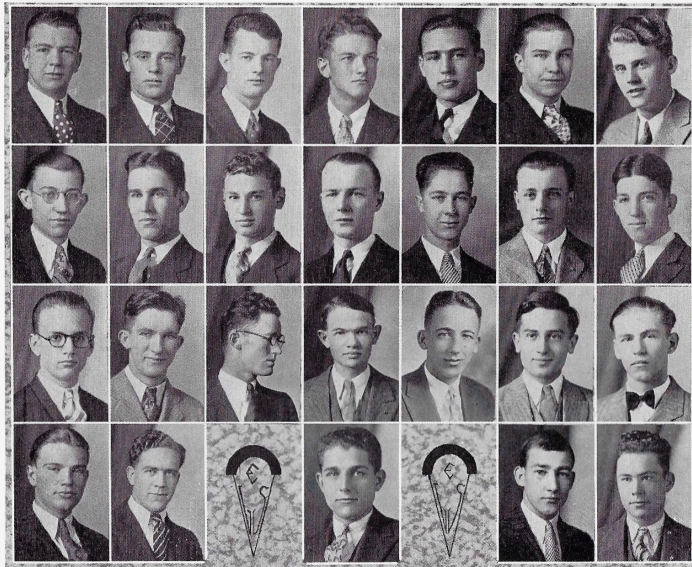


Top Row—McQuillin, Gilliland, Caldwell, Nelson, Bruner, Browning.  
 Second Row—Theilmann, Brower, Jones, Knoch.  
 Third Row—Martin, Boyel, Towns, Everett, Crow, Todd.

Forty-three years ago, Mrs. Proctor, the wife of the president of Missouri Wesleyan, realizing the need of every student to develop socially and morally as well as intellectually, organized the Hesperian Literary Society. In '91 it assumed the name of Aesthesian which it now holds. This is the oldest organization of the school and the lawn fete and banquet have become annual affairs in college life.

This year we gave a joint program and reception with the Excelsiors for the new students. We gave a progressive party for the new pledges and the next week had initiation. We are looking forward to the banquet and lawn fete with great enthusiasm.

THE OWL



Top Row—Yetter, Fox, Collings, Foor, Kellogg, Russell, Carter.  
 Second Row—Foster, Walker, Cater, Olson, Irwin, Dorsey, Beckwith.  
 Third Row—Crawford, Hays, Barnette, Groebe, Whiteaker, Trice, Francisco.  
 Fourth Row—Long, Callaway, Gregory, McClure, Castle.

EXCELSIOR LITERARY SOCIETY

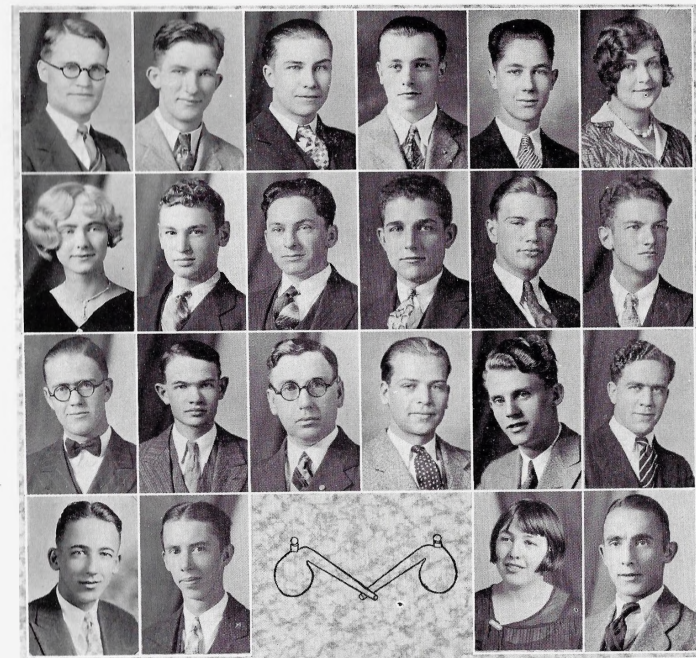
Motto—"Suaviter in modo; foriter in re."  
 Colors—Pink and Green  
 Flower—Pink Carnation

First Semester  
 LaVelle Yetter  
 Robert Fox  
 Richard Foor  
 Ferrill Collings  
 Wilford Crawford  
 James Russell  
 Byron Francisco  
 Forrest Kellogg  
 Cecil Hays  
 Stewart Castle

Officers  
 President  
 Vice-President  
 Secretary  
 Treasurer  
 Pianist  
 Chorister  
 Sergeant  
 Chaplain  
 Curators

Second Semester  
 Robert Fox  
 James Van Winkle  
 Jesse Foster  
 Duane Barnette  
 Wilford Crawford  
 James Russell  
 Byron Francisco  
 Glenn Carter  
 LeVelle Yetter  
 Eugene Trice

THE OWL



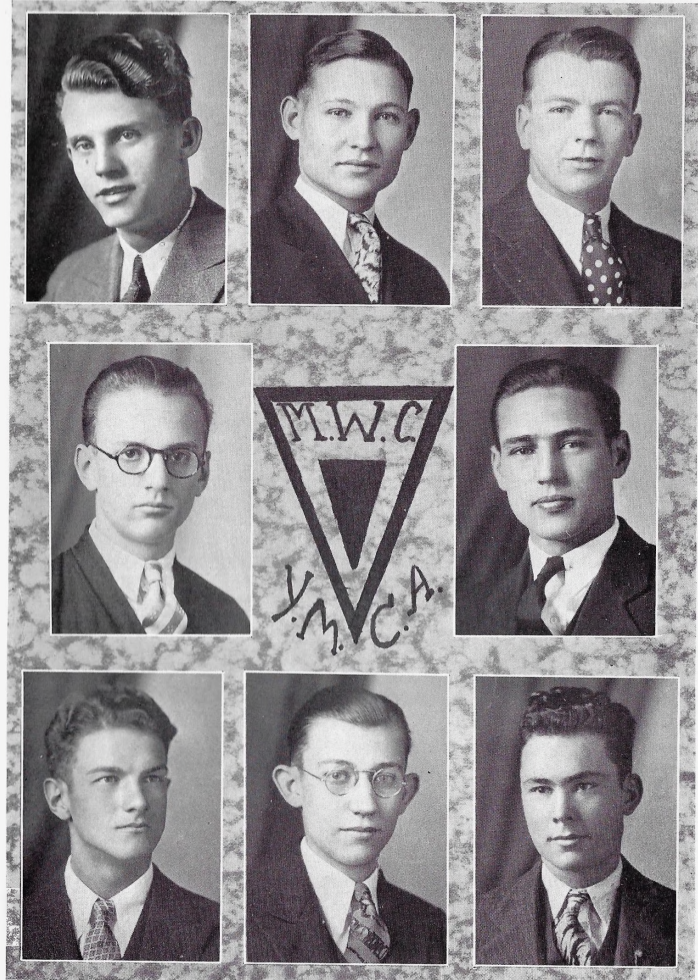
Top Row—Paxson, Hays, Russell, Dorsey, Irwin, Moore.  
 Second Row—Ganfield, Cater, Lippitt, Gregory, Long, Foor.  
 Third Row—Nichols, Groebe, Froman, Wright, Carter, Callaway.  
 Fourth Row—Whiteaker, Mullenix, Nelson, Wilson.

ALCHEMIST'S CLUB

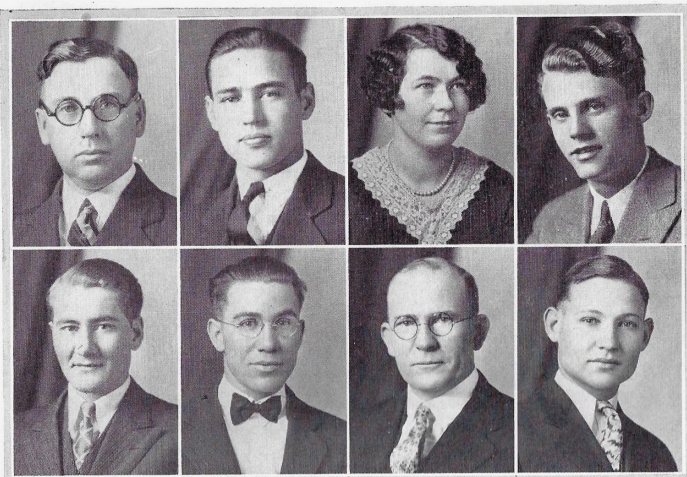
The Alchemist's club is an organization of students of Missouri Wesleyan College who are interested in science, particularly in the fields of Chemistry and Physics. Anyone interested in Chemistry or Physics is eligible for membership in the society, but only those studying the courses, either this year or last year, are taking advantages of the opportunities afforded by the club. The club meets once a month, and discusses questions of a scientific nature. It is evident that this organization is doing much to stimulate an interest in the real value of Chemistry and Physics in our everyday life.



Top Row—Miner, Olsen, Newton.  
 Second Row—Thompson, Morse.  
 Third Row—Gale, Mason, Grimes.  
 Y. W. C. A. CABINET



Top Row—Carter, King, Yetter.  
 Second Row—Crawford, Kellogg.  
 Third Row—Foor, Foster, Castle.  
 Y. M. C. A. CABINET



Top Row—Froman, Kellogg, Ward, Carter.  
 Second Row—Wilson, Macrae, Young, King.

### MINISTERIAL ALLIANCE

Motto—"Fellowship with God, in the service of men."

Faculty Members—Dr. E. J. Gale, D. L. Dalke, W. F. Null, J. W. Thompson.

Associate Members—Mary Miner, Katherine Caldwell, Margaret Newton, Fern Olsen, and Dale Constance.

The Ministerial Alliance is composed of those students and faculty members who are engaged in active Christian Service or who have decided to enter that field of work. All students who are deeply interested in the cause, whether they have decided on this work as a life calling, or not, are welcomed as associate members. The purpose of the Alliance is to bring this group together in fellowship. Worth while meetings, at which there are interesting programs, and helpful discussions, are held weekly for this purpose.

The most important outside activity of the Alliance is the Gospel Team work. Those members who are not engaged in full time ministry, have accepted invitations during the year to conduct services at Churches in Cameron and nearby places. The Gospel Team, at these services, furnished the entire program, including special music and a speaker.



Kellogg      Garner      Barnette      Ward      King

### FORENSIC CLUB

This year the Forensic Club has been handicapped by its very limited membership. But perhaps there are compensations. An added sense of responsibility has attached itself to each member with the result that greater effort, possibly, has been expended.

Forrest Kellogg has acted as president of the organization and Miss Garner has served as sponsor.

As the subject for debate the club has used the National Pi Kappa Delta question: "Resolved, that the nations should adopt a policy of complete disarmament, except for such forces as are needed for police purposes."

The first debate was held before the holidays with Washburn College, of Topeka, Kansas, with King and Kellogg supporting the affirmative for Wesleyan. On February 21, Barnette and King upheld the affirmative in a debate with Simpson College of Indianola, Iowa.

On March 11, the Junior College of Kansas City, Kansas, is to send a negative team here—a return debate is scheduled for March 14, in which Kellogg and Barnette will argue for the negative side. March 20, we are to entertain the debaters from McKendree College, Lebanon, Illinois.

In the Speech Tournament in Kansas City, Kansas, February 7, Missouri Wesleyan was represented by Forrest Kellogg in extemporaneous speaking and by Clark King in original oration.



Top Row—Trice, McClure, Callaway, Francisco, King, Walker, Ferguson, Collings.

Second Row—Gilliland, Shaw, Bird, Browning, Robbins, Todd, Harmon, Fender, McQuillin, Witt.

Third Row—Calhoun, M. Wilson, Knoch, R. Wilson, Barnett, Gay, Sloan.

Fourth Row—Williams, Dodson, Farris, Boyel.

### BIOLOGICAL SCIENCE CLUB

Duane Barnette ..... President  
 Roy Wilson ..... Vice-President  
 Guenavere Knoch ..... Secretary-Treasurer

Motto—"Observing Nature through a scientific eye."

The Biological Science Club was organized December 12, 1929. It grew out of a fine fellowship that was evident on field trips and expressed in special reports and that carried over into the laboratory work. The club was organized as a means of increasing intelligent appreciation and enjoyment of living things about us. The real work of the club has been expressed rather as a class but definite plans have been outlined, some of which will be carried out later in the year.

We sincerely hope that every time a member of this class shall see this page a comradeship shall speak, and that from each shall emanate through life the joy of living in a living world.



Shirts      Mason      Marks      Dorsey      Irwin

### LE CERCLE FRANÇAIS

Le Cercle Français is composed of students of second year French and those with one semester's credit in this language. As Le Cercle Français supplements the work of the class room, it cooperates with the French department in stimulating an interest in the French language and literature.

The total membership of the French Club numbers fifty-six, which exceeds last year's enrollment by ten.

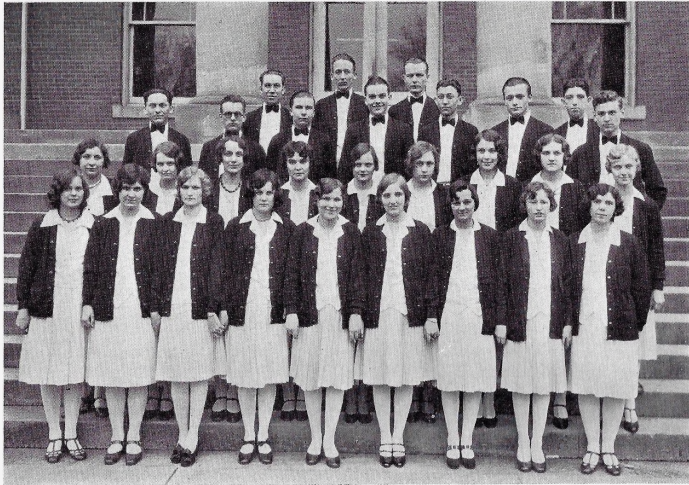
The programs consist of readings and songs in French, instrumental selections by French composers, papers concerning the literature and customs of France, and games.

Meetings are held twice a month.

#### Personnel

Bernice Allen	LaVerne Williams	Amelia Theilmann
Lydia Faye Bryan	Ailene Brower	Virginia Towns
Christine Byers	Edna Browning	J. T. Walker
Richard Foor	Louise DeShon	Donald Whiteaker
Victor Froman	Elma Edwards	Elizabeth Whiteaker
Katherine Gale	Winona Everett	Emma Witt
Faye Ganfield	Wm. R. Farris	Maurice Cater
Roy Gregory	Velta Fender	Wilford Crawford
Margaret Grimes	Richard Irwin (Treas.)	Dennis Dorsey (Sec'y)
Mildred Kelsey	Lucille Jones	Jesse Foster
John Lippitt	Guenavere Knoch	Lorene Kanan
Homer Long	Mae Morton	Jessie Lawrence
Mary E. Mason	Margaret Morse	Katharine Lawrence
(Vice-President)	Adrian McClure	Fern Olsen
Wayne Mayes	Dorothy McQuillin	Esther Shaw
Irene Shirts (Pres.)	Helen Nelson	James Van Winkle
Duane Barnette	Ward Olson	Jessie Robbins
Orville Beckwith	Leona Smith	Miss M. Jeanette Marks, Sponsor





Top Row—Macrae, Whiteaker, Olson.

Second Row—Lippitt, Crawford, Russell, Van Winkle, Foster, Dorsey, Beckwith, Cater.

Third Row—Crawford, Kelsey, Crow, Mason, Knoch, Whiteaker, Miner, Newton, Ganfield.

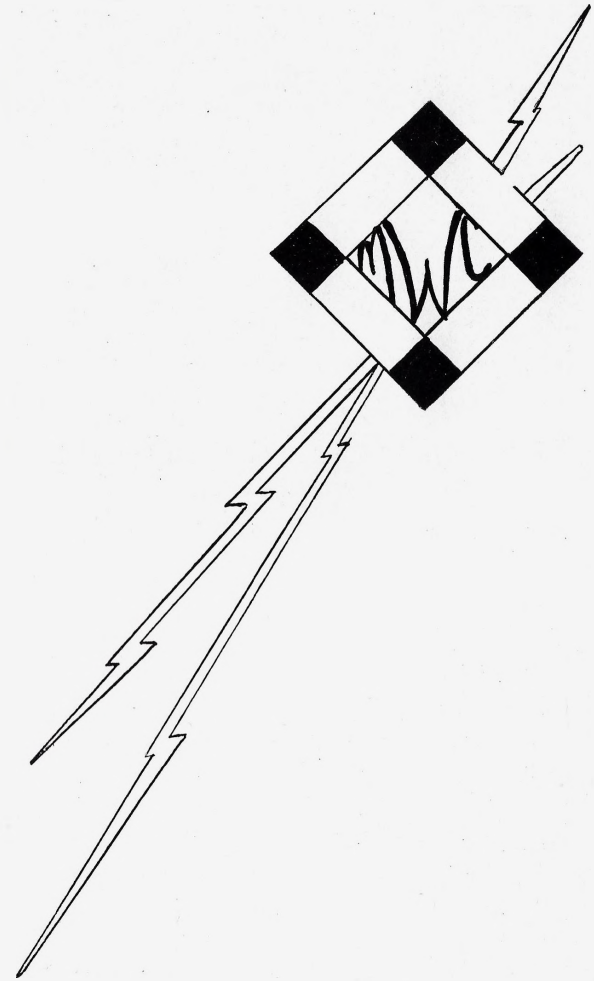
Fourth Row—Potter, Theilmann, Gale, Jones, Grimes, Thompson, Browning, Brower, Macrae.

### CHORAL CLUB

Soon after the first call for rehearsals of the Choral Club was made in the early part of the school year it became evident that Missouri Wesleyan College had the material for a first class organization of this kind.

With the exception of two special numbers given at the Christmas program in the M. E. Church, no public appearances were made. But by the opening of the second semester the club was ready to make plans for trips. Trips were scheduled for a number of cities throughout the north-western and central portion of the state. Probably the date looked forward to most by the singers was the radio concert to be broadcast by radio station WDAF at Kansas City.

The club owes no small amount of its success to the able director, Mrs. L. G. Slayton, who has sacrificed much to guide each member correctly and to Miss Evelyn Ransome, the patient and untiring accompanist.



PUBLICATIONS



OWL STAFF

- Adah Moore ..... Editor-in-Chief
- Wayne G. Mayes ..... Business Manager
- Russell Packham ..... Associate Editor
- Richard Foor ..... Advertising Manager
- Mary Miner ..... Assistant Advertising Manager
- Irene Shirts ..... Literary Editor
- John Lippitt ..... Assistant Literary Editor
- Herndon Mullenix ..... Sports Editor
- Roy Wilson ..... Humor Editor
- Prof. W. F. Null ..... Faculty Advisor

The "Owl" staff faced a great task this year, that of publishing the first annual to appear under the new two-year arrangement at M. W. C. Knowing that the size of the annual must be reduced, even though it did cause a pang of regret, the staff worked diligently to keep the quality of the production high.

Throughout the year, the staff worked together in assembling the material, each member handling his or her work in a creditable manner.

Candy and sandwich sales were held every other Tuesday during the year, in an effort to secure more money for the publication.

An enjoyable feature of the year was a waffle supper given by Mr. and Mrs. Joe Walker at their home, November 18.

The staff greatly appreciates the cooperation of students and faculty in giving their time and interest to helping make a better book. We realize that it is difficult to produce a book that covers the whole scope of school life, but we hope that the book this year will serve as a lasting reminder of Missouri Wesleyan as the students knew it, its joys and sorrows, its classes and activities.



## CRITERION STAFF

Irene Shirts, first semester	}	Editor-in-Chief
Eugene Trice, second semester		
Esther Shaw		Associate Editor
Dennis Dorsey		Business Manager
Jesse Foster		Advertising Manager
Ward Olson		Sports Editor
Louise Gilliland		Feature Editor
Velta Fender		Exchange Editor
Elizabeth Whiteaker		Locals
Margaret Grimes		Aesthesian-Excelsior
Burlah Bird		Ruthean-Adelphian
Glenn Carter		Reporter
Eleanor Ward		Reporter
Corinne Garner		Faculty Advisor

During the first semester the staff under the editorship of Irene Shirts published the Criterion regularly twice a month. Her leadership was certainly a factor in making our representative school newspaper. Eugene Trice headed the publication for the second semester and made a conscientious leader.

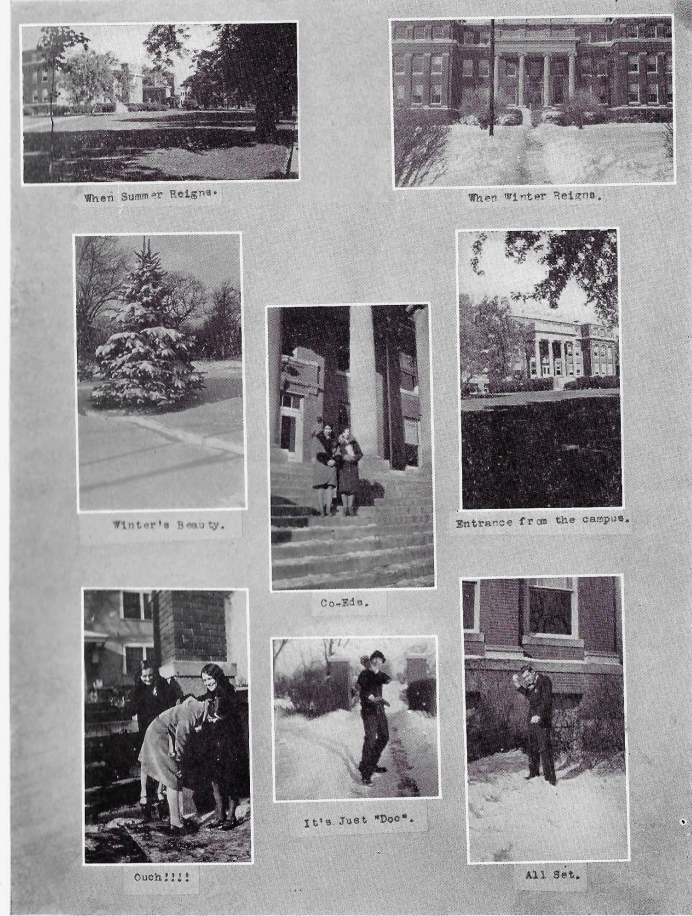
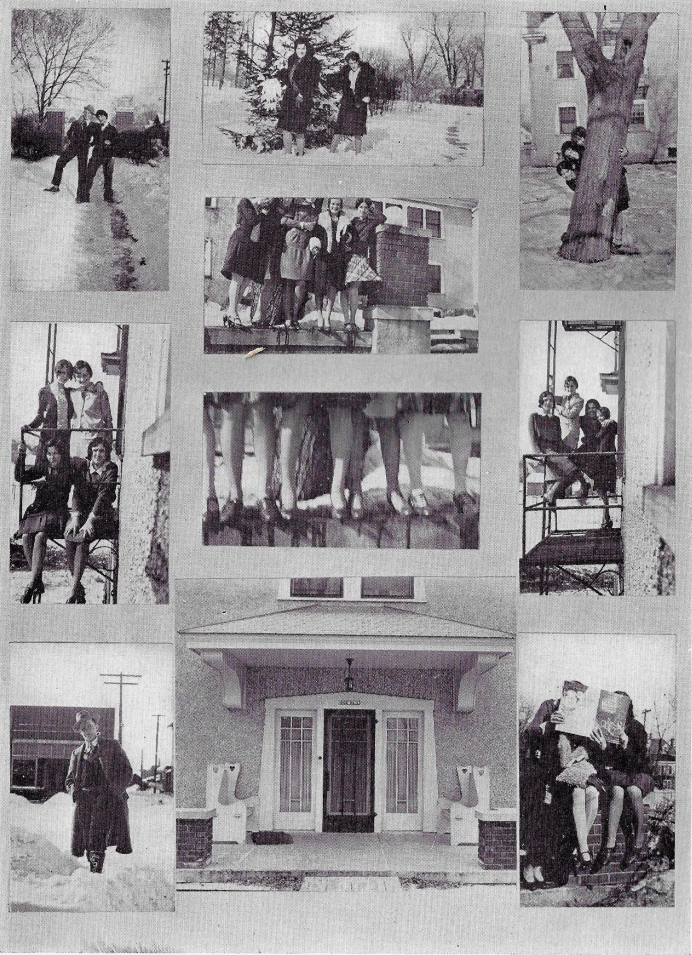
Miss Garner, these two editors, and the staff are all responsible for the paper you've received. If some joke or article has not exactly pleased you, blame us all and forget it. If an article has particularly pleased you, praise us all and remember it. For it has been our purpose to report accurately M. W. C. news in a readable manner.

The faculty and students have been both understanding readers and agreeable helpers. Likewise the Cameron business men have cooperated in a remarkable way to make the Criterion a financial and journalistic success, for which, we, the staff, wish to thank you.

The Owl Queen was elected by popular vote of the student body of Missouri Wesleyan College.



MILDRED KELSEY  
Owl Queen of 1930





THIS and THAT

Miss Garner—Give me a sentence with the word flippancy in it.  
 "Vici" Sheldon—Let's flip-an-see who buys the candy.

\* \* \*

Mrs. Knoch—How is that you let J. T. kiss you good-bye every night?  
 Guenavere—On his lap.

\* \* \*

Speaker at Chapel—Ladies and gentlemen, before I begin my address I have something to say to you.

\* \* \*

Louise DeShon—How many men have you ever kissed?

Mary Benson—Oh, now you know I detest statistics.

\* \* \*

Russell Packham — What are those spots on your lapel—gravy?

"Dick" Bowman—No, that's rust. They said this suit would wear like iron.

\* \* \*

"I can't seem to get this straight," said Hadley, as he combed his hair.

\* \* \*

Margaret Grimes—Did he threaten you when he kissed you?

Faye Ganfield—Yes, he said, "if you scream, I'll never kiss you again."

The census embraces 17,000,000 women, but we can't all be a census.

\* \* \*

Miss Garner—Take this sentence, "Take the cow out of the lot." What mood?

Maurice Cater—The cow.

\* \* \*

Miss Gay (In Prevent. Med.)—I hear they're starting a new campaign against malaria.

Chester Ferguson—Why, what have the malarians done now?

\* \* \*

Miss Harrison—What is your wife going to give you for your birthday?

Dean Dalke—I don't know what I can afford yet.

\* \* \*

Landlord—This room was formerly occupied by a chemist. (Hays). He invented a new explosive.

Prospective Boarder— I suppose those spots on the wall are the results of his experiments.

Landlord—Well, indirectly, yes. You see, that's the chemist.

Don't worry if your job is small  
And your rewards are few;  
Remember that the mighty oak  
Once was a nut like you.

\* \* \*

Emmett Dodson—I took a professional mind reader with me for an auto trip yesterday.

J. T. Walker—Fine! How did she enjoy her holiday?

\* \* \*

Bachelor—There's a delicious sense of luxury when one is lying on one's bed and ringing one's bell for one's valet.

Spinster—Have you a valet?

Bachelor—No, but I have a bell!

\* \* \*

Teacher—Johnny, if your father could save one dollar a week for four weeks, what would he have?

Modern Child (promptly)—A radio, an electric refrigerator, a new suit, and a lot more furniture.

\* \* \*

But it is better to have halitosis than to have no breath at all!

\* \* \*

Traffic Cop—What's your name?  
Truck Driver—It's on the side of me wagon.

Traffic Cop—It's obliterated.  
Truck Driver—Yer a liar! It's O'Brien.

\* \* \*

Dorothy Mae—Don't you think those benches over there look lonely?

Bill—Why don't you go over and put them closer together.

\* \* \*

"The rain, it falls upon the just and also on the unjust fellers, but mostly on the just, because the unjust have the just's umbrellers.

"The only difference between a rut and a grave is in the length and breadth. Don't get in a rut."

\* \* \*

Miss Gay—Deep breathing destroys microbes.

June Boyel—But how are you going to force them to breathe deeply?

\* \* \*

I found that book you lent me frightfully dull, Professor. I thought you said there was a naughty problem in it?

The Professor—My dear young lady! I said a "knotty" problem.

\* \* \*

And then there's the absent-minded professor who let his students write the exam. questions while he answered them.

\* \* \*

Robert Fox—What does the word "davenport" suggest to you?

Edna—Oh, I know: a city out in Iowa!

\* \* \*

Contents of the average "chem" notebook:

- 16 Telephone Numbers.
- 12 Drawings (Girl's heads).
- 1 Imaginative drawing (the Dean).
- 1 Preliminary draft (letter to Susan).
- 1 Preliminary draft (letter to Dad).
- 5 Cameron addresses.
- 3 Home-town addresses.
- 6 Pages, Chemistry notes.

## Easily—the smartest



Clothes for College

### Society Brand Clothes

We have these famous clothes in the season's newest shades and fabrics. In styles specially designed for college men. Styles for young business men, too, who take pride in their appearance.

C. N. Stucker & Co.  
Clothiers

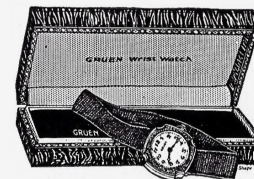
Cameron Missouri

"I was knocked unconscious the other day."

"When do you expect to recover?"

"That boy of ours gets more like you every day."

Husband (meekly)—"What's he been up to now?"



Gifts for All Occasions

Graduation, Weddings, Birthday  
Also

Musical Merchandise and Sheet-Music, First Class Optical Service,  
Fine Watch Repairing.

F. H. Ames, Jewelry, Optical and Music Store

Dr. W. E. Goll, Registered Optometrist

# J.C. PENNEY CO.

208-210—East Third

Cameron, Mo.

READY-TO-WEAR    SHOES    FURNISHINGS  
CLOTHING

Dry Goods and Notions

## THE CAMERON TRUST CO.

Qualified to render every banking service

### The Corner Drug Store

Get it where they've got it

D. H. McCallum

### Place Brothers

Meats and Groceries

Phone 291

### J. W. Poland

Furniture and Picture  
Framing

Y. M. C. A. Building

### John T. Frazier

Furnaces and Sheet  
Metal Supplies

Cameron

Missouri

Your Favorite Drink Is Served  
As You Like Best  
At Our  
Liquid Fountain

Delicious sodas, tempting sundaes, and re-  
freshing drinks made of pure wholesome  
fruits and syrups

Try Our Service, You'll Like It

## LAIN DRUG COMPANY

W. S. DUNLAP, Mgr.

Stein-Block Clothes

Kragmore Clothes

Griffon Clothes

## DERGE-BODENHAUSEN CLOTHING

A Store for Men and Young Men

On Felix Street at Seventh

St. Joseph, Missouri

The Drug Store  
SUPREME

Edelen Pharmacy

Don't Cuss                      Call Us

When You Have Tire

or

Battery Trouble

Millards Tire Shop

Tel. 114



**Park Barber Shop**

West Third St.

First Class Workmen

Your Patronage Solicited

W. H. Denny  
Proprietor

**Owen & Murray**

The Rexall Store

Drugs — Wall Paper

Kodaks — Fountain Pens

Soda Fountain

119 East Third Street

**J. B. RUSSELL**

Dealer of all kinds of

**Building Material**

Long Bell Plan Service

Phone 455

Since 1894

Saving

Assures

Prosperity

**The Farmers Bank**

OF CAMERON

Cameron

Missouri

**Dr. Maude R.  
Maxwell**

Chiropractor

Cameron

Missouri

**C. Everett Ford**

for

Hardware, Cutlery, Etc.

Our Aim Is  
Good Goods at Low Prices

**At Tisdale's**

in Cameron

"Miles of Wear in Every Pair"

Rollin's Full Fashioned

All Silk Hosiery

Delta and French Heels

All Shades and Sizes

\$1.00

World's Greatest Value in  
Hosiery.

**For Shoe Satisfaction it will pay you to buy  
your Foot-wear at Brown's Shoe Store**

An exclusive shoe dealer where you will be properly fitted. We carry sizes and widths to fit you. We invite you to make this your shoe store. We feel that our services will please you.

**R. S. BROWN SHOE CO.**

Economy Through Quality

**THE** Shave Supreme  
The Shave that's Clean

Bobbed Hair Trimmed

**Clark Brothers  
Barber Shop**

All Work Guaranteed

Eyes  
Examined

Glasses  
Fitted

**The  
Sherman  
OPTICAL CO  
CAMERON, MO.**

**G. W. SHERMAN**  
Optometrist

PICTURE FRAMING

Moore Funeral Home

Personal Service

Phone 755

Cameron, Mo.

**Electric Shoe Shop**

It's our business to rebuild your shoes. We double their life. Return postage paid on mail orders.

**H. E. WISE**

Cameron, Mo.

Phone 198

**PLAIN PRICE MERCANTILE CO.**

Telephone 58

Dry Goods, Groceries, Shoes and Notions

Home of Phoenix Silk Hose

For Men and Women Who Care

CAMERON, MISSOURI

Cooper's Underwear  
Mallory Hats

Curlee Clothes      Hart-Schaffner & Marx Clothes  
Up-to-Date Furnishings for Men and Young Men

**DILLINER CLOTHING CO.**

CAMERON

MISSOURI

**New Florence Barber  
Shop**

W. C. Florence, Prop.

**A TRIAL CONVINCES**

Three Chairs      East Third St.  
Better Barbers

Cameron

Missouri

**Cameron Co-Operative  
Elevator Association**

Dealers in Purina Feeds, Coal  
Oils, Sewer Pipe, and all  
Farm Products

E. E. Newby, Mgr.  
J. C. McComb, Pres.

Cameron

Missouri

We wish to thank the Students of  
M. W. C. for their liberal patron-  
age. And at any time they wish  
anything in high grade photo-  
graphy we will be very glad to  
supply them.

**THE A. S. BROWN STUDIO**

Cameron, Missouri

**THOMAS FIDDICK**

**Feed, Fuel and Farm Seeds**

Our Motto:  
**"QUALITY AND SERVICE"**

The Old reliable Cherry Street stand

Call 77

Everything to Eat and Drink

**Neff's Bakery  
 and Fountain**

Candies

Delicious Refreshments

Excellent Service

Cameron - - - Missouri

**We'll Put Your Clothes in Good  
 Shape**

It pays to have us take care of  
 your clothes, for our rates are  
 low and our work excellent.

**TRY US OUT**

**W. R. Findley, Cleaner & Dyer**  
 "It's Clean If I Clean It"

Phone 54                      Cameron, Mo.

Wise—Have you any thumb  
 tacks?

Cracker—No, but I have some  
 finger nails.

**THE COUSINS LUMBER CO.**

**Building Materials for All Purposes**

**Why Not Let Us Fill Your Bin With**

**HENRY FORD COAL**

**Alarm Clocks, Spectacles,  
 Crumb Trays**

Some weeks ago one of our Rural Sub-  
 scribers called over another line and re-  
 ported, "No one on our line has been  
 able to get Central since 8 o'clock this  
 morning."

A test indicated that there was a  
 "Heavy Ground" on this line and after  
 going to six telephones, the trouble-  
 shooter came to the aforesaid subscrib-  
 er's place he found on top of the Tele-  
 phone a Metal Crumb Tray resting  
 against the two binding posts, "Shorting  
 it-to-Ground."

We have driven TEN miles to take a  
 pair of SPECTACLES off a Telephone  
 that had been doing what that crumb-  
 tray was; we have gone SIX miles in  
 zero weather to remove an Alarm Clock.

Do you realize that our records show,  
 that on rural lines, thirty-two per cent  
 of the trouble is caused, (not intention-  
 ally of course) by the patrons themselves.

Do not use your Telephone for a  
 "Catch All", the furniture man has those  
 things for sale.

Help us to make your service better.

**Middle States Utilities Co.**  
 S. D. Thompson, Mgr.

**Blue Bird Beauty Shoppe**  
 "Flutter In"

The New Du-Art  
 The Wonder Wave

**Mrs. Darrell Fiddick**  
 311 Lathrop St.  
 Phone 163


**L. A. WILSON, M.D.**  
 Physician and Surgeon

Howser Building, Third and  
 Chestnut Streets

Phones: Office 737; Residence 737A

Mornings and Sundays by  
 Appointments

Burger Baird  
OF  
KANSAS CITY



MAKERS OF PERFECT PRINTING PLATES  
DESIGNERS OF DISTINGUISHED YEAR BOOKS

## CALENDAR

### SEPTEMBER

- 10—Registration.
- 11—Class bells toll.
- 20—Y. M. and Y. W. reception on campus.
- 27—Football season begins, Wesleyan vs. Albia, there.
- 30—Faculty entertains students at Rice Hall reception.

### OCTOBER

- 3—Aesthesians and Excelsiors give open program.
- 4—First home game.
- 7—Ruthean-Adelphian reception at Rice Hall.
- 9—Kangaroo Court convenes.
- 10—J. T. Walker proposes—and to whom—and why?
- 12—Rockhurst wins over Owls. Pep Squad makes debut.
- 14—Aesthesian-Excelsion reception.
- 16—Pledge Day.
- 17—Adah Moore elected editor of "Owl"; Wayne Mayes, Business Manager.
- 19—Jefferson City defeats Owls.
- 21—Aesthesians give pledges a progressive party.
- 22—Rutheans initiate pledges, initiation lasting twelve hours.
- 23—Alchemists Club organized.
- 24—Irene Shirts elected editor of "Criterion"; Dennis Dorsey, Business Manager.
- 26—Chillicothe game—Donald Whiteaker injured.
- 29—Hallowe'en party at Rice Hall.
- 30—Excelsior initiation.

### NOVEMBER

- 1—Criterion published—French Club organized.
- 2—Lamoni College plays here.
- 4—Y. M. and Y. W. party in gymnasium.
- 5—Forensic Club debates Pi Kappa Delta question first time.
- 16—Carter's "Lament" published; Dean announces no Thanksgiving vacation.
- 18—Owl Staff enjoys waffle-eating marathon; thanks to the hospitality of Mr. and Mrs. Joe Walker.
- 21—Wentworth Dragons wallop Owls.
- 28—Thanksgiving and first snowfall.  
Many old students glad to visit us again.  
Owls lose last game.

### DECEMBER

- 1—Three Wesleyan players honored in K. C. Star.
- 3—Owl staff candy bars sell plenty fast.
- 5—M. W. C Guild sponsors music recital.
- 6—Inter-class basketball games.
- 10—Mildred Kelsey elected Owl Queen.
- 11—Freshmen-Sophomore girls tie in basketball game.
- 12—Rutheans give football squad a real banquet at Hotel Cameron; Captains elected; letter men announced.  
Biological Science club organized.

- 13—Executive committee entertains football squad at a banquet. Better come to chapel!
- 18—Rhythm kings from C. H. S. enliven chapel.
- 20—Choral Club makes first appearance. Vacation begins. Plenty of "Merry Christmases."

JANUARY

- 4—Students shocked and grieved to learn of death of Mildred Brown.
- 7—We return from Christmas vacation. Students pay last respects to beloved classmate, Mildred Brown, attending the funeral in a body. Katherine Gale presents pleasing recital.
- 8—Snow-bound!
- 18—Owls lose to Kemper by close score of 32-30.
- 21—Chillicothe Business College Ducks defeat Owls 28-20.
- 22—Sixteen "W's" presented in chapel to football lettermen.
- 23—Dean Dalke takes Sociology classes to St. Joseph. Miss Ransome gives a brilliant recital.
- 24—Finals begin today. And what a day! Wentworth defeats Owls.
- 27—Registration and enrollment for second semester.

FEBRUARY

- 4—Rockhurst Hawks smother Owls.
- 5—Jerry Johnson, a live wire speaker, addresses student body.
- 6—Student recital.
- 7—Public speaking students participate in intercollegiate contest at Kansas City.
- 13—Aesthesians and Excelsiors enjoy Taffy Pull.
- 15—M. W. C. and Kidder Junior College hold joint "Y" conference.
- 18—Dean appears at chapel and in classes with one black shoe and one tan one.
- 19—Grandma Shepherd celebrates her ninety-first birthday.
- 21—King and Barnette debate Simpson College.
- 22—Owls lose to St. Paul in thrilling basketball game.
- 25—C. B. C. defeats Owls in last conference game.
- 26—Dr. Ding of Fu Chow College speaks.

MARCH

- 8—M. W. C. debates team from Oklahoma Baptist U. of Shawnee, Oklahoma, here.
- 9—Choral Club sings at Civil Bend.
- 11—M. W. C. debates K. C. Junior College, K. C., Kansas, here.
- 14—Return debate with K. C. Junior College, K. C., Kansas, there.
- 16—Choral Club sings at dedication of new Funeral home in Lathrop.
- 17—Ruthean-Adelphian banquet at Hotel Cameron.
- 20—McKendree College debates here.

APRIL

- 12—Aesthesian-Excelsior banquet at Hotel Cameron.
- 25—Mildred Kelsey gives recital.

MAY

- 8—State Track Meet at Columbia. M. W. C. represented.
- 9—High School day sponsored by M. W. C.
- 25—Baccalaureate.
- 30—Commencement. Lawn fete. Aesthesians. Adieu!

## EDITOR'S FINAL WORDS

And now with a feeling of regret we come to the close of the book. The editor does not know how this year's book will be received by the students, but it is to be hoped that all may find some pleasure in reading it. As our faculty advisor so aptly put it, "The zero hour of the OWL is the day after you receive it. You have read every joke, and seen every picture....." But in the years to come, the true value of the yearbook becomes apparent. It is a book of memories, of pleasant associations, of good friends' faces pictured there. Again and again we turn to the yearbook; it is a source of pleasure many times over. With this in mind, the staff has striven to portray a true picture of Missouri Wesleyan in her various moods, so that not a single side of the life be shown, but the true many-sided life of the college be pictured. The editor feels it only fair to say that not she but the whole staff is responsible for the planning and carrying out of the work of this book.

To those who have published the OWL in other years we owe a debt of gratitude for the use of materials which would otherwise have had to be omitted.

Missouri Wesleyan finds herself now in different circumstances from any she was ever in before, but the fact that she has become a two-year school rather than a four-year one does not mean that she no longer stands for the high ideals that she has always stood for. Quietly and without show she goes about her business of educating young men and women to take their places in the world and lead lives that will be inspirational to others and that will be the embodiment of Missouri Wesleyan ideals.

We of the class which graduates this year will look to Missouri Wesleyan as our Alma Mater. Here we had our first experience of college life, and how kindly we were treated! It is difficult to leave our first college and go out into the world to other surroundings, be they school or office. But we are glad to have known our Alma Mater, to have received some of her blessings, to have worked and played, laughed and wept, and learned to live under her guiding hand.