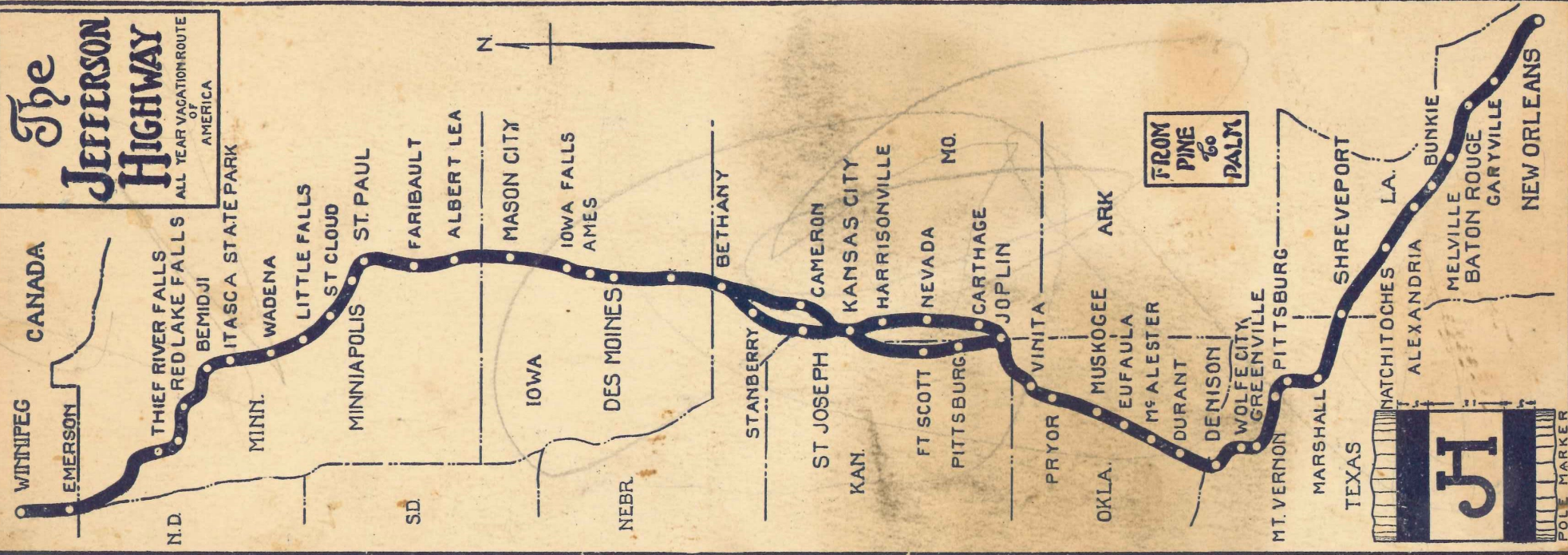


The JEFFERSON Highway

ALL YEAR VACATION ROUTE OF AMERICA

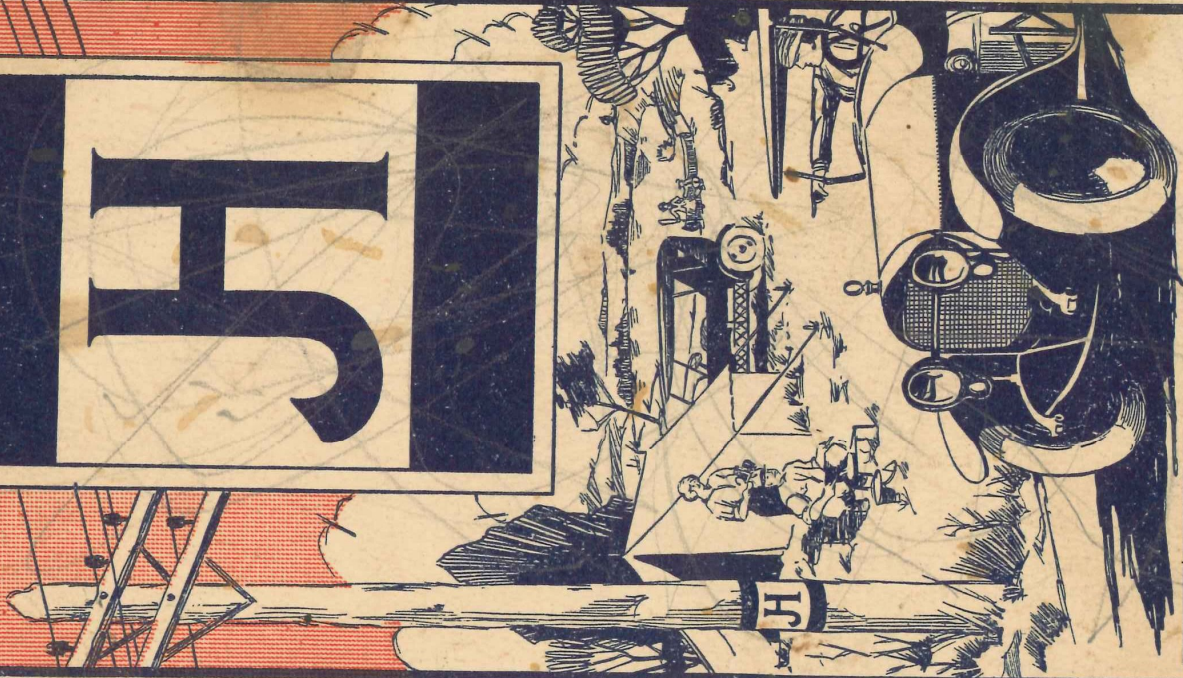


FROM
PINE
to
PALM



**TOURIST
CAMP MANUAL**

J



JEFFERSON
HIGHWAY
From PINE to PALM
WINNIPEG to NEW ORLEANS

For Further Information Write to International
Headquarters
JEFFERSON HIGHWAY ASSOCIATION
Touring Information Bureau
St. Joseph, Mo.

All-the-Year Vacation Route of America
From Pine to Palm

JEFFERSON HIGHWAY
(International)

NEW ORLEANS TO WINNIPEG

This Highway was organized in November, 1915, at New Orleans, Louisiana. It was organized for the dual purpose of providing a great north and south highway and to honor the name of Thomas Jefferson for the part he took in the Louisiana Purchase.

How well this organization has succeeded may be evidenced by the fact that nearly 2,000 miles of this highway is now hard-surfaced, the major portion being high type paving.

The Louisiana section of the Jefferson Highway is practically completed in its entirety.

Texas, with exception of two counties, in which contracts have been let, is hard-surfaced.

The road programs of Oklahoma and Missouri are progressing with rapid strides, under efficient, well-organized highway commissions.

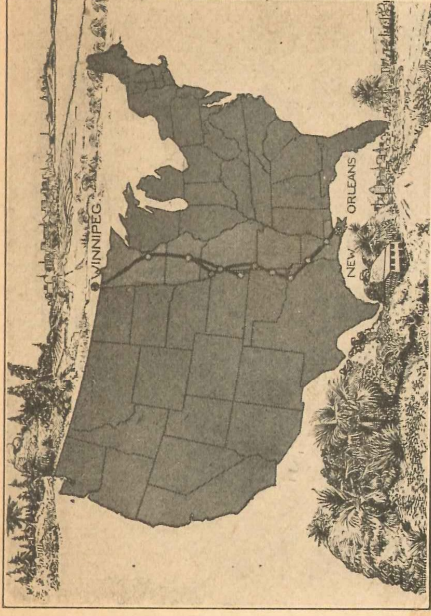
Kansas, with exceptions of parts of three counties, is hard-surfaced. The few stretches of dirt roads are well maintained.

Iowa and Minnesota have included the Jefferson Highway in their state programs as one of the trunk highways that will be builded first. Over 750 miles connect Des Moines with the Twin Cities of Minnesota and the recreation grounds of that section. Better than 200 miles of this is concrete paving, the remainder gravel and other types.

The way is blazed by over two thousand metal signs and over twenty thousand pole marks and monograms.

As it winds its way south from Winnipeg the Jefferson traverses the rich area of the great glacial deposits in Manitoba, through Minnesota southward until it comes to the upthrust of the Ozark Mountains, thence its trend is westward around the western spurs of these mountains till it crosses the Red River into Texas at Denison. From there it takes a southeasterly course through Louisiana over the alluvial deposit of the Red and Mississippi rivers.

In its course the Jefferson not only traverses the heart of the richest country on the globe, but also one filled with romance and sentiment.



TOURIST CAMP MANUAL

THAT THE TOURIST CAMPS maintained by the various cities and towns traversed by the Jefferson Highway are proving to be popular and attractive is evidenced by the increasing favor given to the cities which afford these facilities and conveniences.

The cities alive to their opportunities today are the ones which strive to offer the accommodations that make motoring and transcontinental touring a pleasure. Whether the tourist is one who makes use of the modernized camping facilities or not, he is at least attracted and impressed by the spirit of hospitality which is evidenced and reflected by these camping conveniences.

It has been our purpose in compiling this manual to list every town and city on the Jefferson Highway that affords the convenience of a tourist camp. Considerable expense has been incurred in the publication of this booklet and we have endeavored to make it as reliable and authentic as possible. New camps will be included in future editions of the manual.

Modern hotels and garages are maintained in practically every town and city situated on the Jefferson Highway, and the tourist who desires to make use of the services of these will be extended every courtesy and convenience possible at reasonable rates.

This tourist camp manual is for FREE distribution through touring information bureaus, or copies may be obtained by mail from international headquarters of the association.

ADDRESS

Jefferson Highway Association
Touring Information Bureau
ST. JOSEPH, MO.

INDEX

IOWA—	
Ames	18
Ankeny	19
Clear Lake	12
Davis City	23
Des Moines	19
Hampton	14
Hubbard	16
Indianola	20
Iowa Falls	14
Kensett	11
Lamoni	24
Leon	22
Manly	11
Mason City	13
Nevada	17
Northwood	11
Osceola	21
Sheffield	13
Zearing	16
KANSAS—	
Baxter Springs	36
Fort Scott	35
Galena	36
Louisburg	34
Pittsburg	35
Pleasanton	34
LOUISIANA—	
Alexandria	46
Baton Rouge	47
Bunkie	47
Mansfield	42
Montgomery	45
Natchitoches	43
New Orleans	47
Shreveport	42
MINNESOTA—	
Albert Lea	10
Anoka	8
Bagley	4
Big Lake	7
Bronson	3
Champlin	8
Clearbrook	4
Elk River	7
Faribault	9
Farmington	8
Geneva	9
Gonvick	4
Gully	4
Hallock	3
Karlstad	3
Little Falls	6
Minneapolis	8
Northfield	9
Osseo	8
Owatonna	9
Park Rapids	5
Randall	6
MINNESOTA—Cont'd.	
Red Lake Falls	3
Royalton	6
Sauk Rapids	7
St. Cloud	7
St. Paul	8
Staples	6
Thief River Falls	3
Trail	3
Wadena	6
MISSOURI—	
Adrian	31
Albany	26
Bethany	25
Butler	31
Cameron	27
Cartersville	33
Carthage	32
Eagleville	25
Excelsior Springs	28
Jasper	32
Joplin	33
Kansas City	31
King City	26
Lamar	32
Lees Summit	31
Liberty	31
New Hampton	25
Nevada	32
North Kansas City	27
Pattonsburg	27
St. Joseph	26
Sheldon	32
Smithville	26
Stanberry	26
Rich Hill	31
Union Star	26
Webb City	33
Winston	27

(Population figures given in this Manual were taken from the census of 1920)

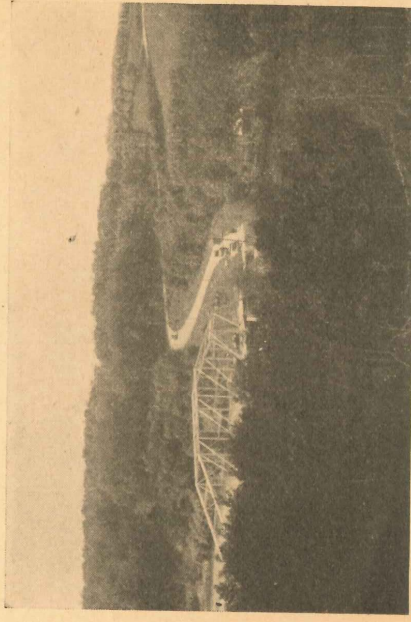
MINNESOTA

Hallock—Capacity 75 cars, electric lights, (Pop. 1012) water, comfort stations, shade, free fuel. Hallock is a fine little city situated about 24 miles below the Canadian boundary line and its people are among the most courteous to be found anywhere. Next camp south 16.4 miles.

Bronson—No definite camp established, but arrangements are being made for tourist quarters. The immediate locality affords ample accommodations for camping, however. Next camp north 16.4 miles, south 16.5 miles.

Karlstad—Capacity 35 cars, lights, water, comfort stations, shade, free fuel, tables and benches. Roads in this locality are mostly gravel. Tourists will be afforded every courtesy possible. Next camp north 16.5 miles, south 49.4 miles.

Thief River Falls—Capacity 50 cars, electric lights, water, bath house, rest house, shade, free fuel, tables and benches. Park is situated in heart of fine timber plot, on banks of Red Lake River, affording good bathing and fishing. Next camp north 65.9 miles, south 21 miles.



Jefferson Highway, Just North of Red Lake Falls

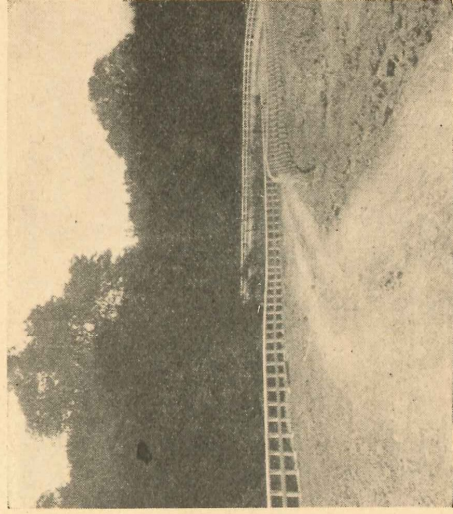
Red Lake Falls—Capacity 75 cars, electric lights, water, rest house, shade, free fuel, tables and benches. Next camp north 21 miles, south 35 miles.

International Jefferson Highway

Trail—Capacity 25 cars, water, shade, free (Pop. 231) fuel, comfort stations. Roads well graded and graveled. Next camp north 35 miles, south 4 miles.

Gully—Capacity 10 cars, electric lights, (Pop. 217) water, rest house, shade, free fuel, tables and benches. Next camp north 13.6 miles, south 28 miles.

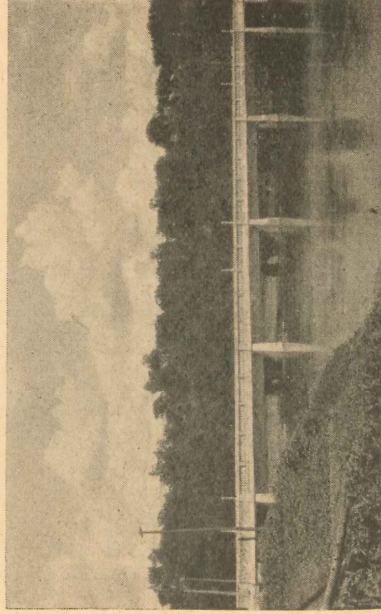
Gonvick—Capacity 50 cars, lights, water, (Pop. 276) shade, free fuel, tables and benches. Next camp north 9 miles, south 6.8 miles.



On the Jefferson Highway in Minnesota.

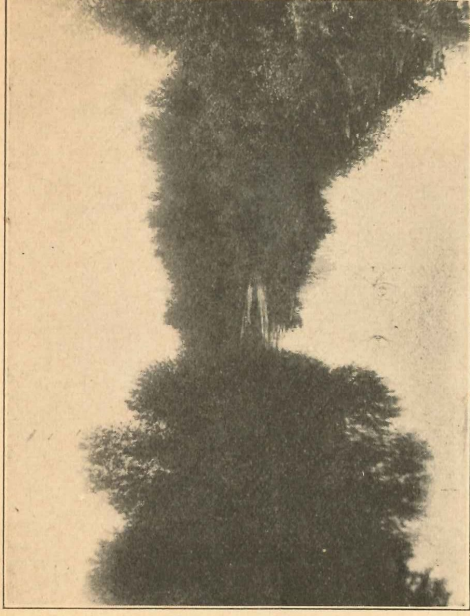
Clearbrook—Capacity 25 cars, electric lights, (Pop. 310) fine spring water, shade, comfort stations, free fuel, tables and benches. Next camp north 6.8 miles, south 13.6 miles.

Bagley—Capacity 25 cars, electric lights, (Pop. 814) water, rest house, free fuel, tables and benches. Fine lake with sandy beach, just 300 feet from park. Next camp north 13.6 miles, south 28 miles.



Bridge Over Clearwater River, Minn.

TOURIST CAMP MANUAL



Headwaters of the Mighty Mississippi, Itasca Park, Minn.

Park Rapids—Capacity 50 cars, water, rest (Pop. 1606) house, shade, free fuel, tables and benches. The tourist camp is located on the shores of a very beautiful lake which has a fine sandy beach affording good bathing. Next camp north 23 miles, south 38.7 miles.

Park Rapids is in the center of the best outing and fishing region of Minnesota. A drive of less than an hour will take you to dozens of lake hotels and resorts where boats, and guides if you want them, will direct you to the best fishing grounds. If you wish you may drive to scores of lakes deep in the woods, where there are no hotels and where fishing is supreme and campers are welcome with no restrictions other than ordinary courtesy and care of fires.

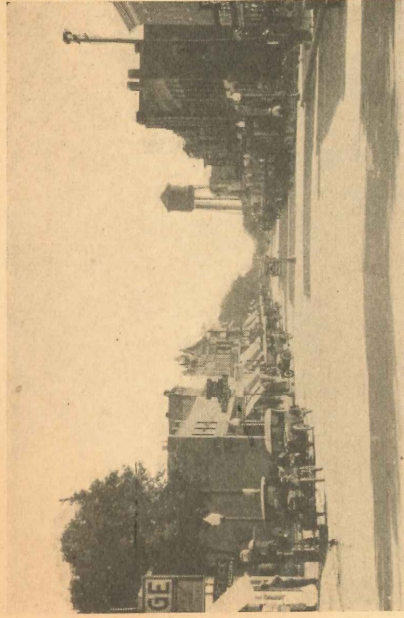
East from Park Rapids are Dorset, Nevis, Akeley and Walker and the many lakes near.

West from Park Rapids are Osage, Ponsford, the Indian Reservation, Detroit and many lakes near.

The next camp north of Park Rapids is in Itasca State Park, a natural park, seven miles square in the primitive woods, set apart by the people of the state of Minnesota as a state owned natural play grounds. Douglas Lodge is a state owned hotel where cabins are situated in a beautiful grove of trees on the shores of Itasca Lake, and is 23 miles north of Park Rapids on the Jefferson Highway. On the Park road four miles north of the Lodge are the buildings of the Forestry School, a branch of the State University. Near these is the residence of the Park Commissioner, Hon. E. R. Hinds, where the tourists will find a generous welcome and be personally conducted to one of the best tourist camps in Minnesota, where the tourist will learn that he is one of the owners of Itasca State Park and be accorded treatment as such.

The next camp north is at Bagley, 28 miles north of Douglas Lodge and 51 miles north of Park Rapids.

International Jefferson Highway



Street Scene, Wadena, Minn.

Wadena—Camp at fair grounds on the edge (Pop. 2186) of town, ample capacity, electric lights, water, shade, free fuel, comfort stations, tables and benches. Next camp north 38.7 miles, south 20.7 miles.

Staples—40 acres—water, rest house, shade, (Pop. 2570) free fuel, tables and benches. Approximately 1000 cars used this camp last season. Next camp north 20.7 miles, south 42.1 miles.

Randall—Tourists camp contemplated; as- (Pop. 301) surance given that all facilities would be provided by June 1st.

Little Falls—Capacity 35 cars, electric lights, (Pop. 5500) water, shade, comfort stations, tables and benches. Beautiful pine grove park and bathing beach. Next camp north 42.1 miles, south 13.1 miles.

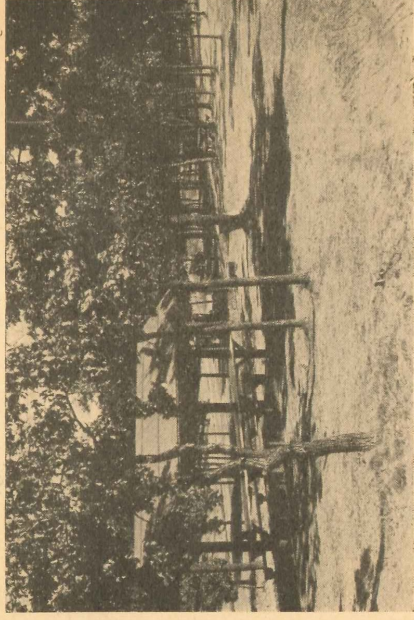


Mississippi River Scene Near Little Falls, Minn.

Royalton—Capacity 100 cars, water, comfort (Pop. 690) stations, fine shade, free fuel, tables and benches. Next camp north 13.1 miles, south 20.4 miles.

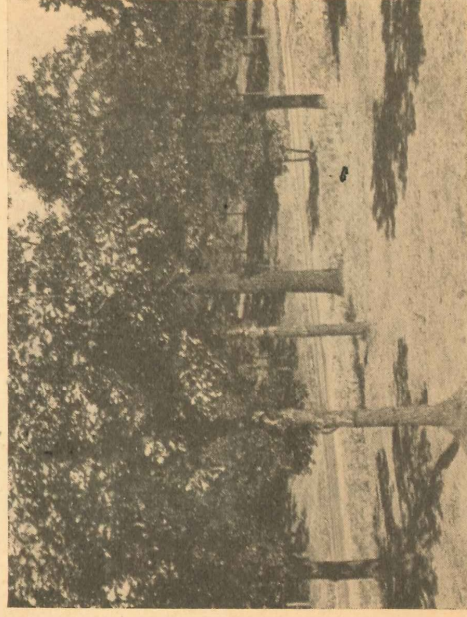
TOURIST CAMP MANUAL

Sauk Rapids—Capacity 60 cars, water, bath- (Pop. 2349) ing in river nearby, rest house, shade, free fuel, tables and benches. Next camp north 20.4 miles, south 2 miles.



Section of Camp, St. Cloud, Minn.

St. Cloud—Capacity 200 cars, electric lights, (Pop. 15873) water, rest house, shade, tables and benches. The camp has a caretaker. Next camp north 2 miles, south 28.2 miles.



St. Cloud Tourist Camp Affords Every Opportunity for Rest and Recreation

Big Lake—Capacity 100 cars, lights, water, (Pop. 361) shade, tables and benches. Boating, bathing and fishing in lake. Next camp north 28.2 miles, south 7.5 miles.

Elk River—Twelve-acre park, water, comfort (Pop. 983) stations, tables and benches, river bathing and fishing. Next camp north 7.5 miles, south 11.9 miles.

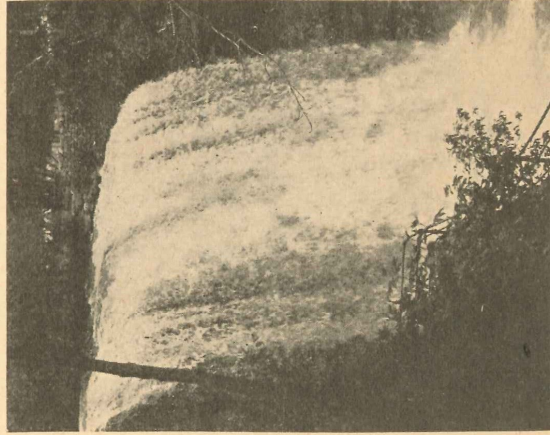
International Jefferson Highway

Anoka—Capacity 35 cars, water, rest house, shade, tables and benches. Next camp north 11.9 miles, south 1 mile.

Champlin—Capacity 25 cars, water, rest house, shade, free fuel, tables and benches. Next camp north 1 mile, south 5 miles.

Osseo—Capacity 25 cars, electric lights, water, rest house, shade, free fuel, tables and benches. Next camp north 5 miles, south 8 miles.

Minneapolis—Capacity 50 cars, electric lights, water, rest house, shade, free fuel, tables and benches. The Jefferson Highway is crossed by the Yellowstone Trail at Minneapolis. Next camp north 8 miles, south 10 miles.

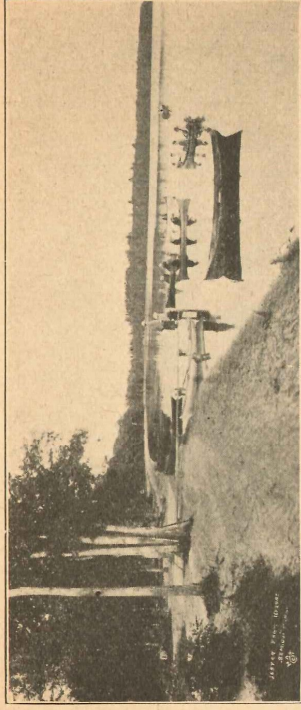


Minnehaha Falls

St. Paul—Capacity 250 cars, electric lights, water, shower baths, rest house, shade, free fuel, tables and benches. Next camp north 10 miles, south 31.1 miles.

Farmington—Ten-acre tract, lights, water, river bathing, comfort stations, ample shade, free fuel, tables and benches. Overseer in charge of park. Next camp north 31.1 miles, south 14.1 miles.

Tourist Camp Manual



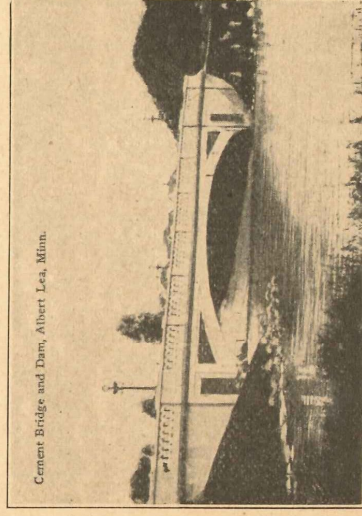
Fine Boating, Bathing and Fishing in Lakes of Minnesota

Northfield—Capacity 50 cars, electric lights, artesian well water, bathing beach, comfort stations, shade, free fuel, tables and benches. Camp located on Carleton College Campus on banks of Cannon river. Next camp north 14.1 miles, south 15 miles.

Faribault—Capacity 50 cars, electric lights, water, comfort stations, shade, free fuel, tables and benches. Next camp north 15 miles, south 15.9 miles.

Owatonna—Capacity 500 cars, electric lights, water, rest house, shade, tables and benches. Next camp north 15.9 miles, south 18.4 miles.

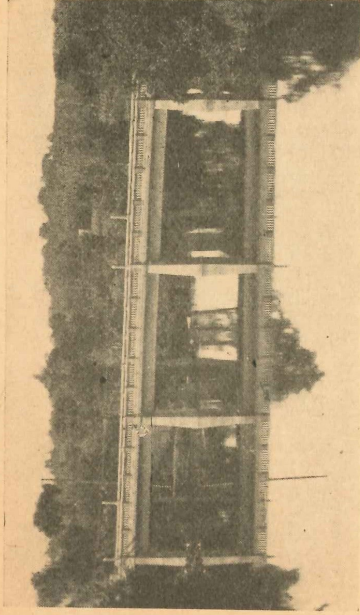
Geneva—Suitable grounds have been set aside for camping park and action taken to provide necessary conveniences. Next camp north 18.4 miles, south 14.3 miles.



Cement Bridge and Dam, Albert Lea, Minn.

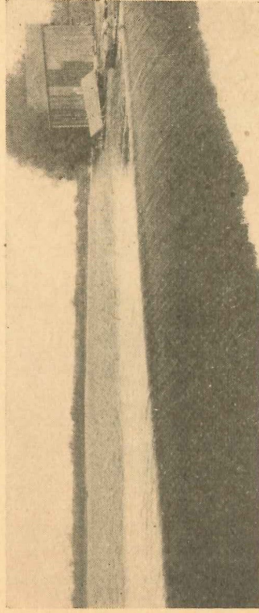
Jefferson Highway Crossing at Albert Lea, Minn.

International Jefferson Highway



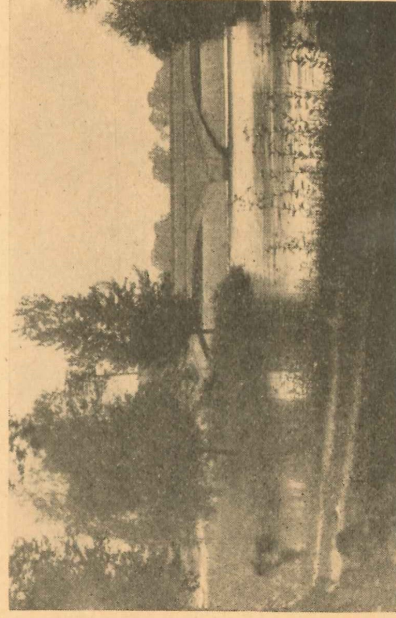
Jefferson Highway Bridge in Minnesota

Albert Lea—Capacity 150 cars, electric lights, water, rest house, shade, free fuel, good bathing facilities. Next camp north 14.3 miles, south 20 miles.



Scene Near Entrance to Tourist Camp, Northwood, Iowa

[The completion in 1922 of 175 miles of hard-surfaced road (from Faribault to Little Falls) affords the tourist on The Jefferson Highway in Minnesota a fine opportunity for travel and recreation, with every measure of safety and pleasure. The balance of The Jefferson Highway in Minnesota is mostly gravel. Earth roads are graded and kept in fine condition.]

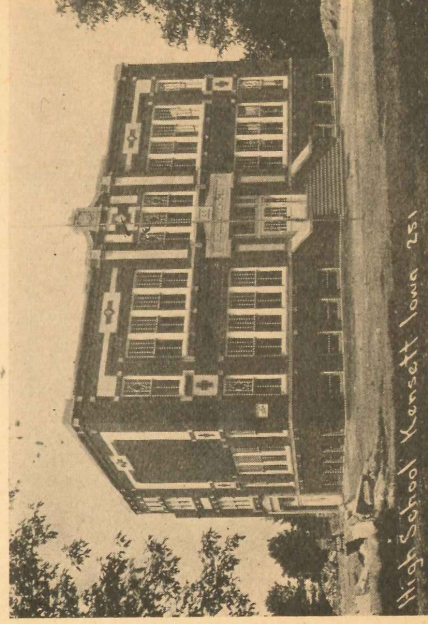


Scene from the Tourist Camp, Northwood, Iowa

TOURIST CAMP MANUAL

IOWA

Northwood—Eleven acre camp, electric lights, water, rest house, shade, free fuel, tables and benches. Northwood, the county seat of Worth county, is located on the banks of the pretty Shell Rock river, and is a beautiful little city of about 1600 inhabitants. Its wide streets lined with nice shade trees and pretty homes with well kept lawns; its natural park of old oak trees, with the river winding through it, makes Northwood one of the most charming towns in the state. With the people of the city trying to make the tourist feel welcome; with an eleven acre natural park, provided with free camping facilities, a modern three story brick hotel, good cafes, a half dozen modern garages; with all these to offer, it is not to be wondered at that an ever increasing number of tourists on the great Jefferson Highway find Northwood a pleasing, resting place on their journey. You will want to stay here a week. Next camp north 20 miles, south 6.7 miles.

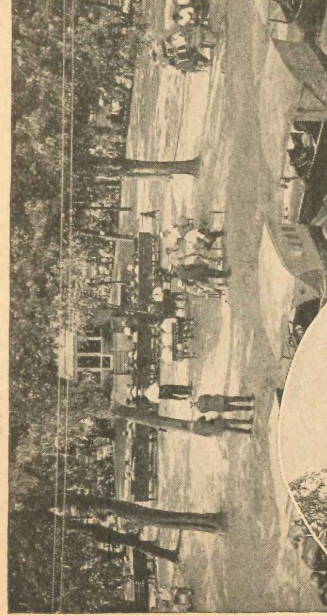


High School, Kensett, Iowa

Kensett—Capacity 100 cars, electric lights, water, comfort stations, abundant shade, free fuel, tables and benches. Next camp north 6.7 miles, south 15.8 miles.

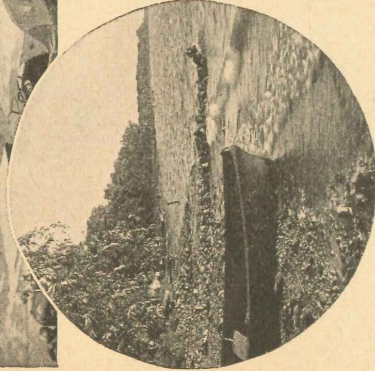
Manly—Committee appointed to make arrangements for suitable tourist camp. No further details.

International Jefferson Highway

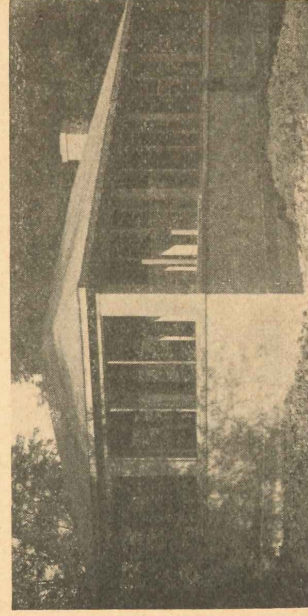


Tourist Camp Grounds
at Clear Lake, Iowa

Clear Lake —
(Pop. 3500)
Capacity 50 cars,
electric lights,
water, rest house,
beautiful park,
tables and
benches. Well
equipped summer
cottages for rent
by day or week.



Lakeshore Hotel fronting on beautiful Clear Lake, and other hotels to accommodate the many tourists who stop over at this popular resort each summer. Two band concerts daily and dancing every evening. Good fishing, canoeing, golfing and bathing. The new \$15,000 bath house erected last year is one of the largest and undoubtedly the finest in the state of Iowa and accommodates 600 people per hour. The state fish hatcheries placed seven million pike and thirty-eight thousand bass in Clear Lake in 1922, which makes fishing a real sport. On paved highway, ten miles west of Mason City. Fittingly called "The Saratoga of the West."

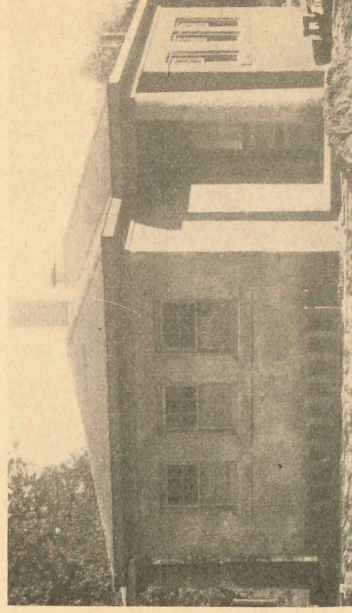


Shelter House in Tourist Camp, Mason City, Iowa

12

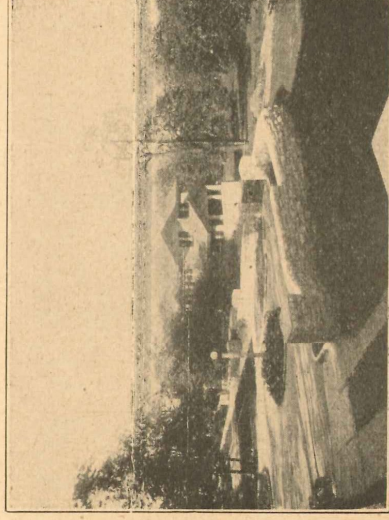
TOURIST CAMP MANUAL

Mason City—Capacity 200 cars, electric lights, water, shower baths, rest house, shade, free fuel, tables and benches. Camp ideally situated and quite complete in appointments. Next camp north 15.8 miles, south 18 miles.



Bath and Rest House in Tourist Camp, Mason City, Iowa

Sheffield—Capacity 100 cars, lights, water, tables and benches. The city has \$50,000 memorial hall open to everybody, night and day, with ladies' rest room, shower baths, etc. Next camp north 18 miles, south 10 miles.

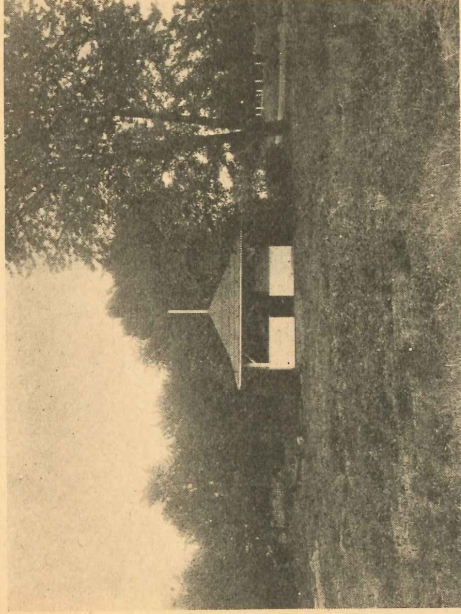


Mason City Is Famous for Its Many Beautiful Residences
Built of Cement

13

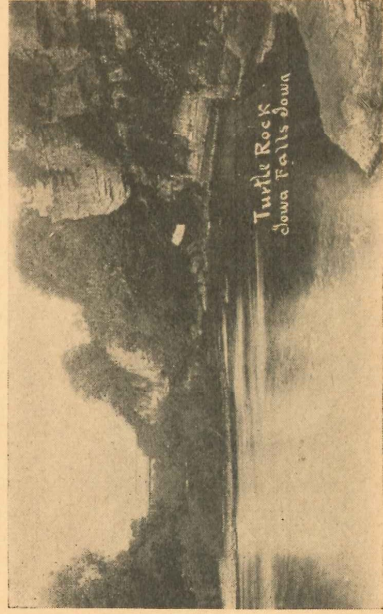
International Jefferson Highway

Hampton—Capacity 100 cars, electric lights, (Pop. 2992) water, comfort stations, shade, tables and benches, gas for cooking. Hampton claims one of the best located tourist camps in the state, only four blocks from main part of the city. Next camp north 10 miles, south 18 miles.



Pergola in Tourist Camp, Hampton, Iowa

Iowa Falls—Capacity 500 cars, electric lights, (Pop. 3954) water, rest house, shade, free fuel, tables and benches. Iowa Falls, Iowa, an up-to-date city of 4000 inhabitants, is located at the intersection of the Jefferson Highway and Rainbow Trail in the heart of the best farming community in Iowa and in addition is located at the most scenic point on the Iowa river. The beautiful natural timber, its high rocky bluffs and deep canyons and its natural ice cold springs



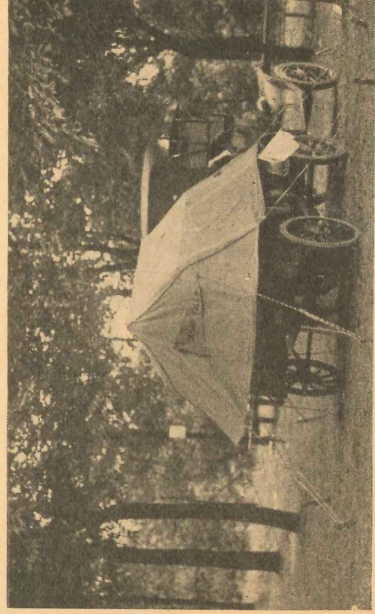
Beautiful Scene Near Iowa Falls, Iowa

TOURIST CAMP MANUAL



Bathing at Iowa Falls, Iowa

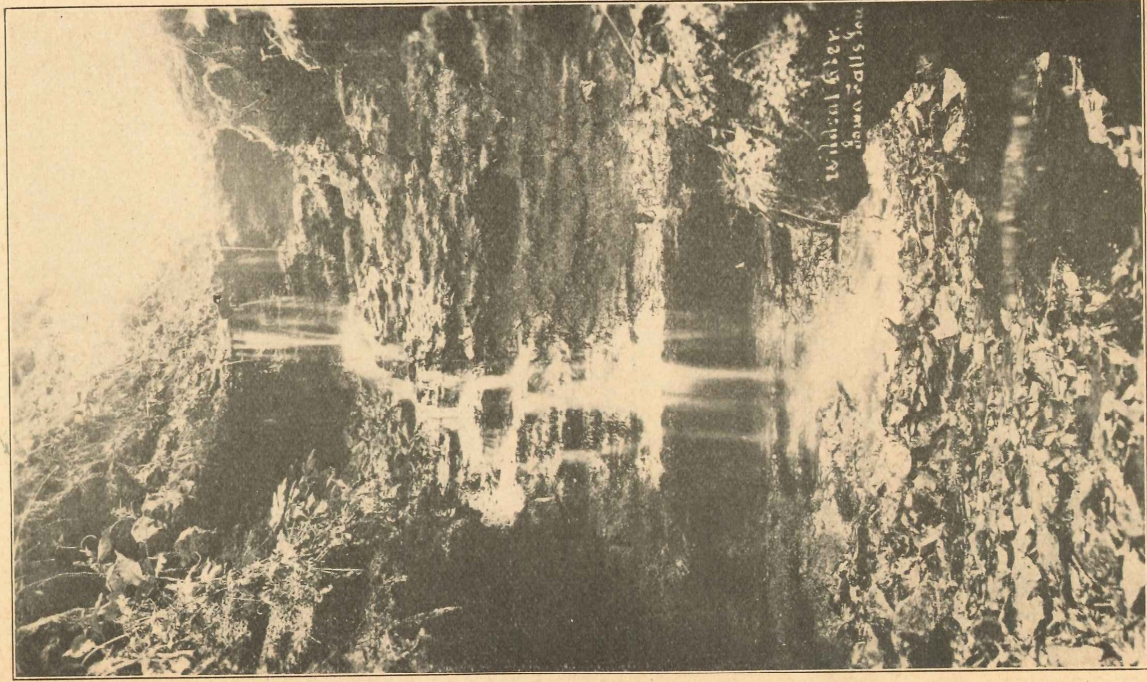
attract many people here for camping and recreation. The river flows directly through the city and affords fishing, boating and bathing in summer and ice skating in winter. The free tourist camping park is located directly on the Jefferson Highway and Rainbow Trail on a paved street and is in the heart of the city just across the street from garage, market, hotel, grocery, restaurant and only four blocks from the main business district; nevertheless is very secluded. The free camping park is located in a natural timber, not heavy but affording plenty of shade, has a heavy blue grass sod and is well drained by the natural lay of the land. It is bounded on one side by Rock Run canyon, which is one of the most unique things in Iowa, and on the other side by the Iowa river. Park is well equipped. Tourists comment on this being one of the best they find. The Community Club tries to make tourists feel welcome and affords a free tourists information bureau. Next camp north 18 miles, south 15 miles.



Tourist Camp, Iowa Falls, Iowa

International Jefferson Highway

Hubbard—Capacity 20 cars, electric lights, (Pop. 681) water, comfort stations, shade, free fuel, tables and benches. (Pine Lake, 70 acres of water surface, 10 miles distant). Next camp north 15 miles, south 10.3 miles.

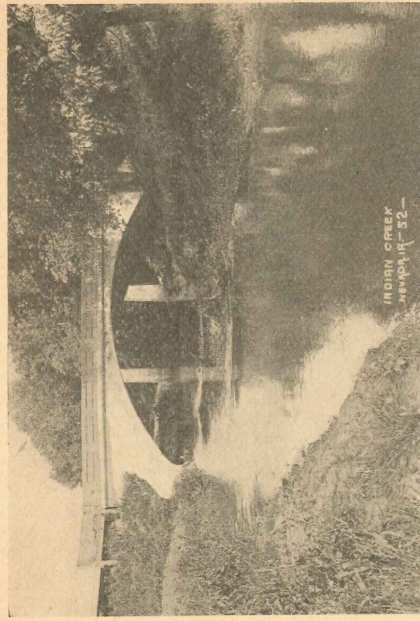


Wild Cat Glen, Iowa Falls, Iowa

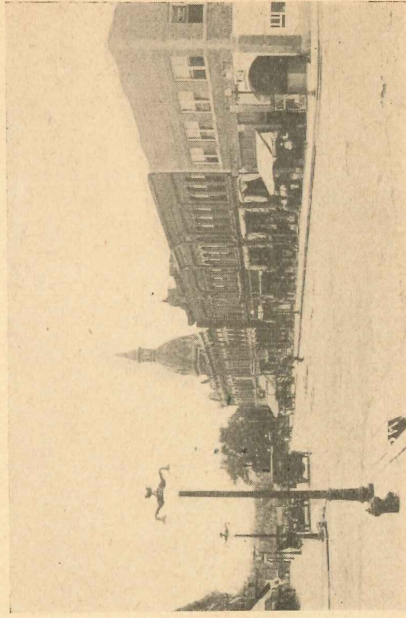
Zearing—Capacity 50 cars, electric lights, (Pop. 471) water, rest house, shade, free fuel, tables and benches. Next camp north 26 miles, south 17 miles.

16

Tourist Camp Manual

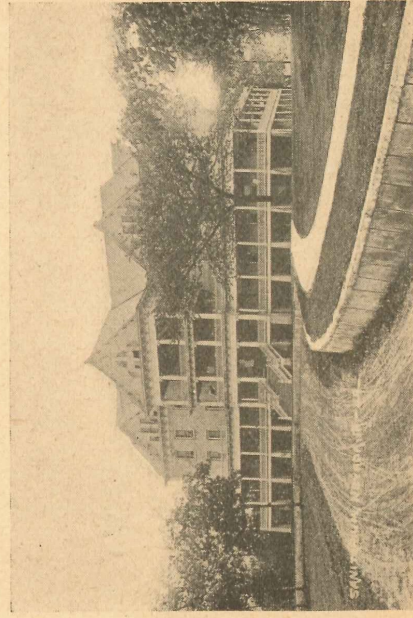


Nevada—Capacity 150 cars, electric lights, (Pop. 2668) water, rest house, stove, shower bath, shade, free fuel, tables and benches. Tourist Park is located about four



Street Scene, Nevada, Iowa

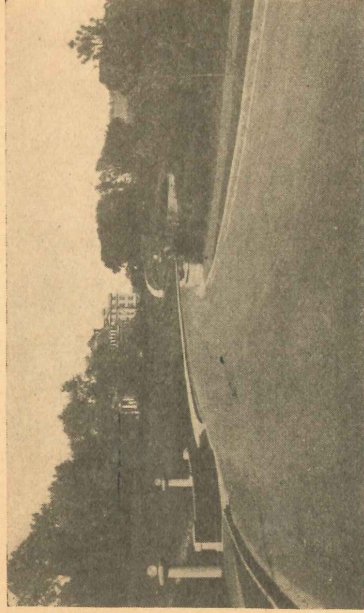
blocks east of main street on Jefferson and Lincoln Highways. Next camp north 17 miles, west 8.5 miles.



Sanitarium, Nevada, Iowa

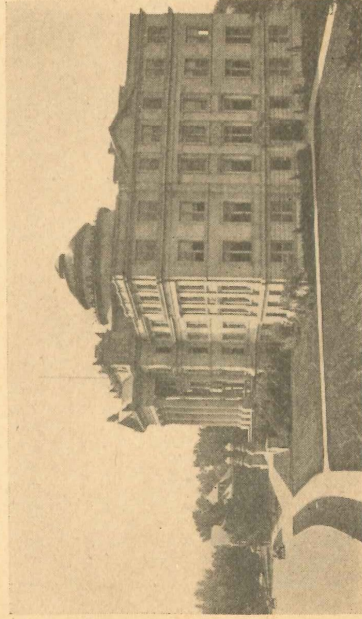
17

International Jefferson Highway



Entrance to Iowa State College Grounds, Ames

Ames—Capacity 500 cars, electric lights, (Pop. 6270) water, shower baths, comfort stations, fine shade, free fuel, tables and benches. Approximately 2600 cars used



Central Hall, Iowa State College, Ames

this park last season. Ames is the seat of the Iowa State College of Agriculture and Mechanic Arts. Next camp east 8.5 miles, south 20 miles.

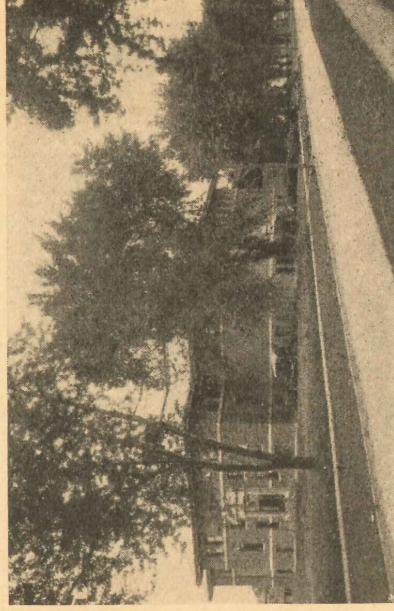


Camping Park on the Jefferson Highway in Iowa

18

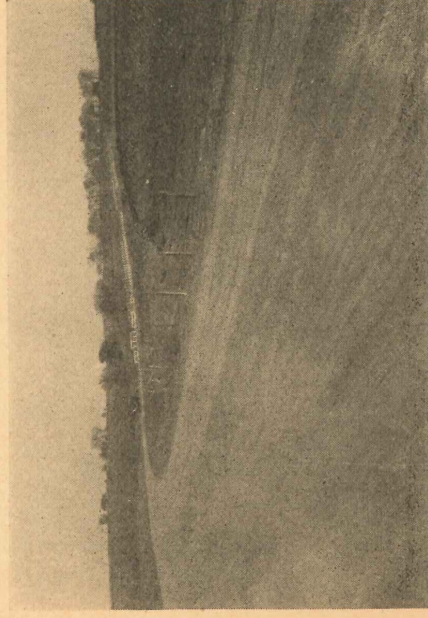
TOURIST CAMP MANUAL

Ankeny—Capacity 20 cars, water, comfort (Pop. 648) stations, shade, free fuel, tables and benches. Next camp north 20 miles, south 10 miles.



Simpson College, Indianola, Iowa

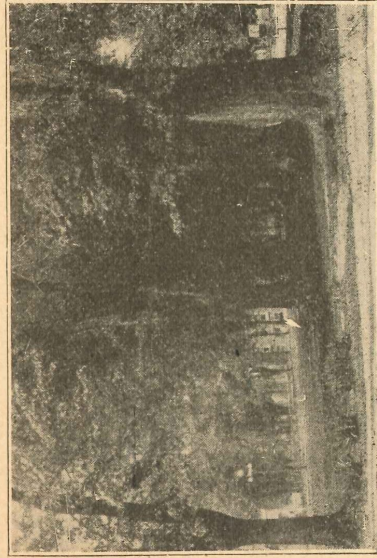
Des Moines—Capacity 200 cars, electric (Pop. 126468) lights, water, rest house, shower baths, shade, gas ranges, tables and benches. Grounds patrolled day and night by three special caretakers. Shelter house accommodating 300 people. Gravel roads throughout camp grounds. Next camp north 15 miles, south 19 miles.



Roads are Fine in Iowa.

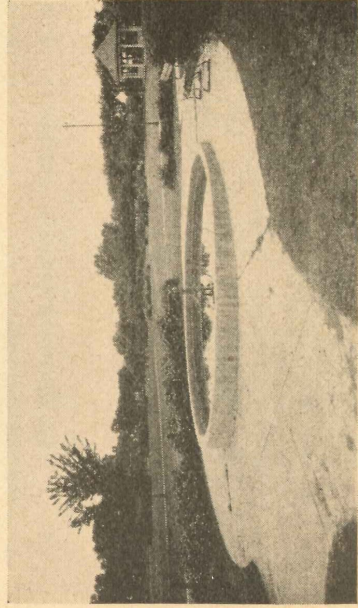
19

International Jefferson Highway



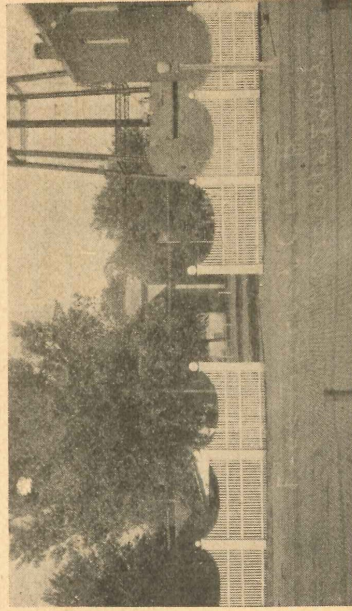
Tourist Camp, Indianola, Iowa

Indianola—Capacity 200 cars, electric lights, water, shower baths, rest rooms, shade, free fuel, tables and



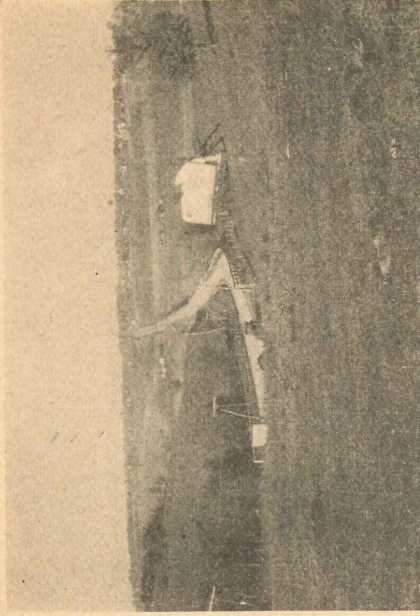
Simpson College Campus, Indianola, Iowa

benches. The camp is on the beautiful campus of Simpson College. Next camp north 19 miles, south 31 miles.



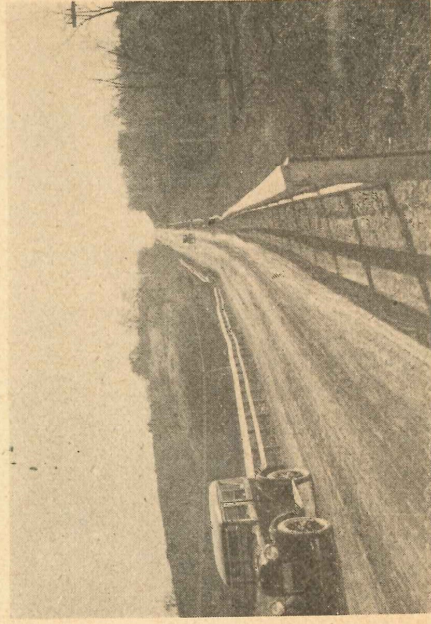
Tourist Camp Entrance, Osceola, Iowa

TOURIST CAMP MANUAL



Jefferson Highway Leading to Osceola, Iowa.

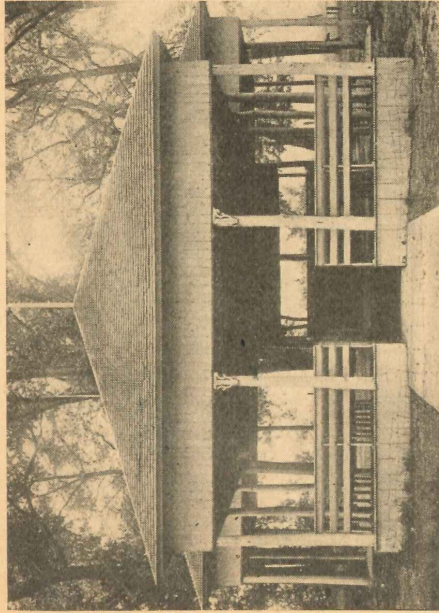
Osceola—Capacity 40 cars, electric lights, (Pop. 2684) water, shower baths, city gas with slot meter for cooking. Screened dining room, 36x36, with cement floor. An exceptionally well equipped tourist camp, situated within a block of stores and picture shows. The grounds are graveled and streets paved. Camp is kept lighted all night and



On Jefferson Highway in Southern Iowa

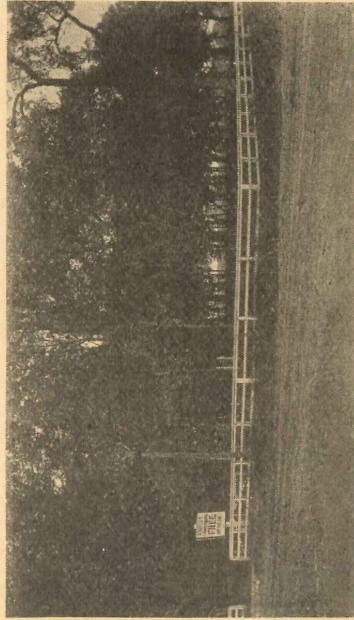
policed. Has shed for autos and rack for washing cars. By agreement at least one store is kept open of evenings to accommodate the tourist trade. The Blue Grass trail (east and west) crosses the Jefferson Highway at Osceola. Next camp north 31 miles, south 22 miles.

International Jefferson Highway

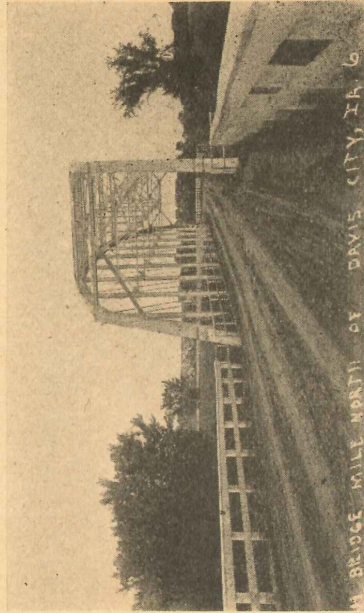


Shelter House in Tourist Camp, Davis City, Iowa

Leon— Capacity 20 cars, electric lights, (Pop. 2193) water, rest house, shade, free fuel, tables and benches. Next camp north 22 miles, south 9 miles.



Tourist Park, Davis City, Iowa



J. H. Bridge Near Davis City, Iowa

TOURIST CAMP MANUAL

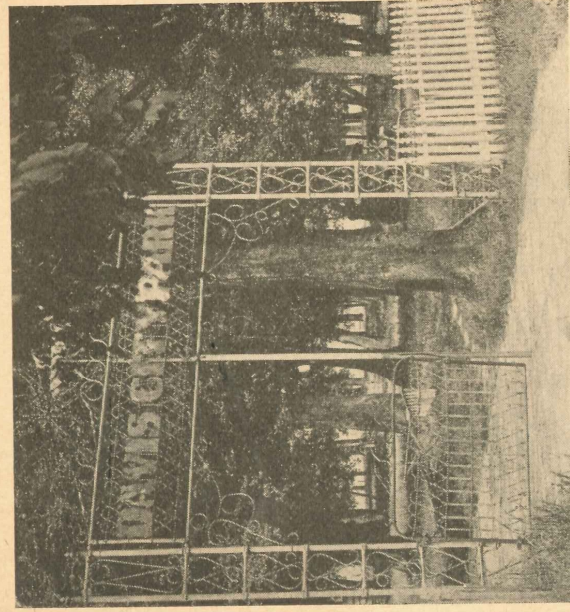
Davis City—Capacity 200 cars, electric lights, (Pop. 476) water, rest house, shade, free fuel, tables and benches. New camp and fuel house and new furnace. The Davis City Park was once a part of a great forest that extended from Decatur County, Iowa, to the mouth of Grand river. It contained such fine trees as the red oak, white oak, swamp oak, white and black hickory, sycamore and ash. Here the red man had



The Old Mill Stream, Davis City, Iowa

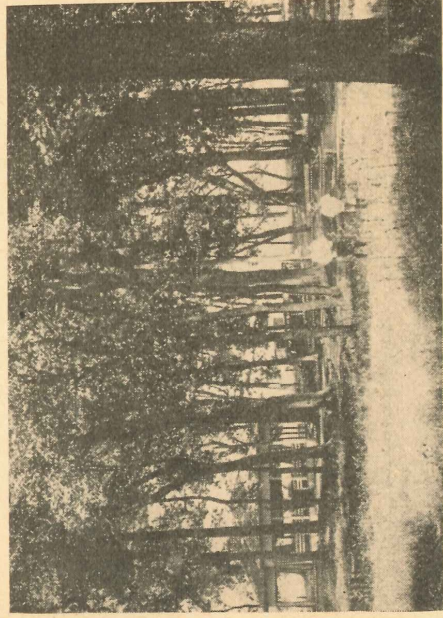
his home and was shaded and sheltered by the forest growth. This fine forest land extended as far south as the Missouri river bordered by fine prairie land, presided over by wild flowers. Here the red squirrel and the honey bee had their winter home long before Mr. Bryant was born. Here the Pottawatomie Indians made camp and held their pow wows. Such scenes are now gone forever. Where there was once beauty and the silent glade there is now the smell of gasoline and the chug-chug of the motor car. The woodman's ax and the ruthless hand of ignorance have laid waste the most beautiful forest land on the American continent. Seeing the destruction that was being wrought, a few such men as W. F. Craig, J. E. Teal, Uncle Billy Bowman and others, set about to save the remnant of forest land adjoining Davis City. The result of their foresight saved to the little city on the banks of Grand River thirteen acres of primeval

International Jefferson Highway



On the Jefferson Highway in Iowa

forest land. There is not another town on the Jefferson Highway with such a park. We, as citizens of Davis City, are justly proud of this beauty spot, and we invite our friends from everywhere to stop when passing this way and enjoy the sweet scented woodland, and to fish in the running waters. Next camp north 9 miles, south 7 miles.



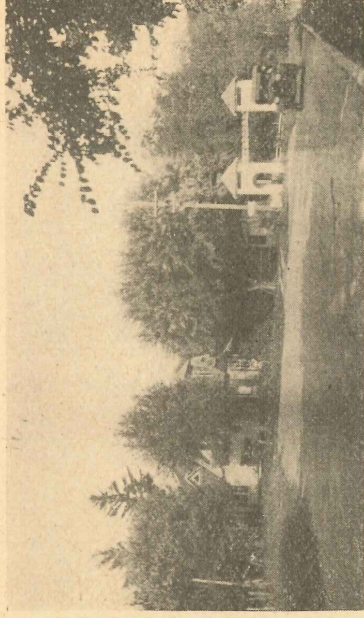
In the Tourist Camp, Davis City, Iowa

Lamoni—Capacity 25 cars, electric lights, water, rest house, shade, tables and benches. Camp adjoins business section of town. Has shady lawn, well drained. Next camp north 7 miles, south 14 miles.

TOURIST CAMP MANUAL

MISSOURI

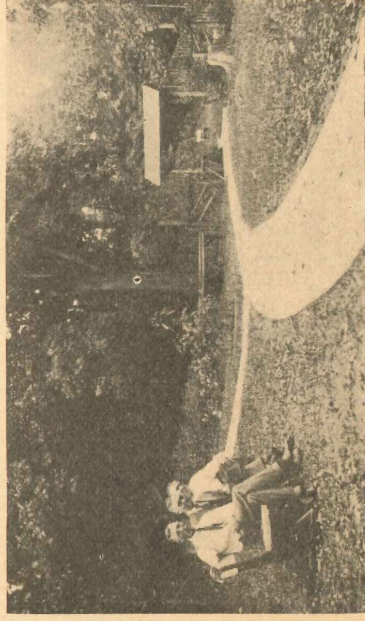
Eagleville—Capacity 8 cars, water, rest house, free fuel. Next camp north 14 miles, south 16 miles.



Entrance to Tourist Camp, Bethany, Mo., showing residence of Mr. Herman Roleke, Superintendent of Park

Bethany—Capacity 100 cars, water, rest house, shade, free fuel, tables and benches. The high bluff in northwest part of camp grounds affords good protection against storms. The Indians knew the value of this spot in this respect and many relics of their former camping abode were found when Mr. Roleke, in 1880, started work toward shaping up the grounds and the planting of trees, shrubs, flowers, laid water mains, erected fountains, building what is known today as beautiful Roleke Park, the haven of rest for the tourist. Next camp north 16 miles, west 10.4 miles.

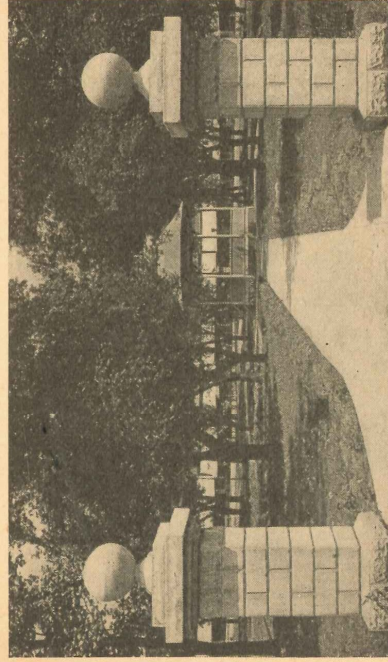
New Hampton—Camp with ample accommodations contemplated. Shade, water, comfort stations and other conveniences promised. Next camp east 10.4 miles, west 8.3 miles.



Restful Surroundings in Tourist Park, Bethany, Mo.

International Jefferson Highway

Albany—Capacity 50 cars, electric lights, (Pop. 2016) water, comfort stations, shade, free fuel, tables and benches. Next camp north 8.3 miles, south 12 miles.



Entrance to Tourist Park, Stanberry, Mo.

Stanberry—Capacity 100 cars, electric lights, (Pop. 1864) water, rest house, free fuel, tables and benches. Next camp north 12 miles, south 12 miles.

King City—Capacity 25 cars, electric lights, (Pop. 1150) water, comfort stations, shade, free fuel, tables and benches. Next camp north 12 miles, south 8 miles.

Union Star—Capacity 50 cars, electric lights, (Pop. 434) water, shade. Next camp north 8 miles, south 27 miles.

St. Joseph—Capacity 100 cars, electric lights, (Pop. 77937) water, comfort stations, shade, free fuel, tables and benches. St. Joseph is the International Headquarters of the Jefferson Highway and the National Headquarters of the Pikes Peak Ocean-to-Ocean Highway. Next camp north 27 miles, south 42.7 miles.

Smithville—Capacity 50 cars, electric lights, (Pop. 782) water, comfort stations, shade, free fuel, tables and benches. Hard surfaced road from Clinton County line to Kansas City, 26 miles. Next camp north 42.7 miles, south 16.3 miles.

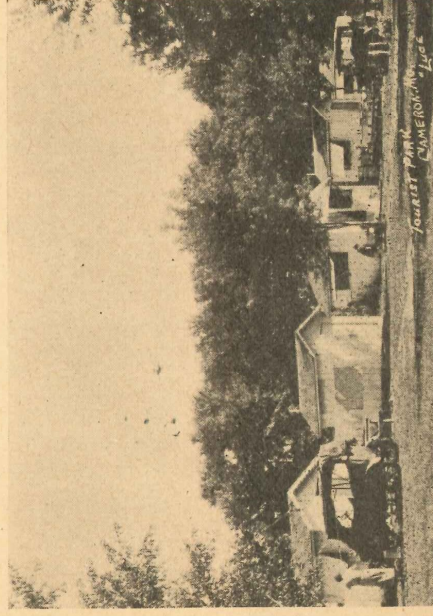
Tourist Camp Manual

North Kansas City—Capacity 200 cars, (Pop. 870) electric lights, water, shower baths, comfort stations, shade, free fuel, tables and benches. Next camp north 16.3 miles, south 4 miles.

(Note—Pattonburg, Winston, Cameron, Excelsior Springs and Liberty are on the branch between Bethany and Kansas City.)

Pattonburg—Capacity 100 cars, water, comfort stations, shade, tables and benches. Next camp north 19 miles, south 14 miles.

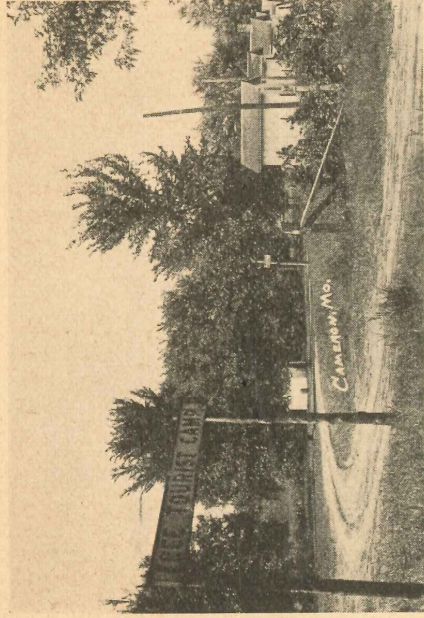
Winston—Capacity 50 cars, water, comfort stations, shade, tables and benches. (Pop. 460) Next camp north 14 miles, south 15 miles.



Tourist Park, Cameron, Mo.

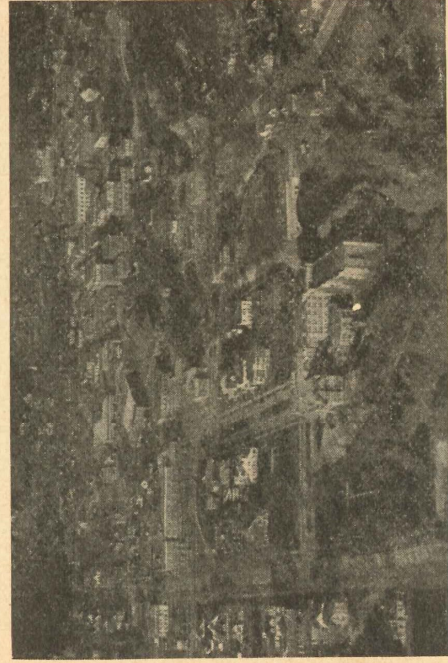
Cameron—Capacity 500 cars, electric lights, (Pop. 3248) water, comfort stations and free fuel. Cameron welcomes the tourist with one of the prettiest camps in this territory. Well shaded park, covered with heavy blue grass sod, ample parking space, modern free kitchen, free shelter houses, shower baths for men and women, and every convenience hospitality can suggest. The camp is adjacent to the pretty campus of Missouri Wesleyan college and one of the town's best residence sections. A fertile, beautiful country surrounds Cameron. About

International Jefferson Highway



Entrance to Tourist Park, Cameron, Mo.

10 miles distant is the seat of the old Mormon temple, at Far West. Two primary highways meet at Cameron, which is at the junction of the Jefferson Highway and the Pikes Peak Ocean-to-Ocean Highway. Cameron prides itself on its splendid schools and college, its miles of paved streets, municipal electric plant, water works and sewers and a class of people unsurpassed for courtesy and cordiality. Next camp north 15 miles, south 32 miles.



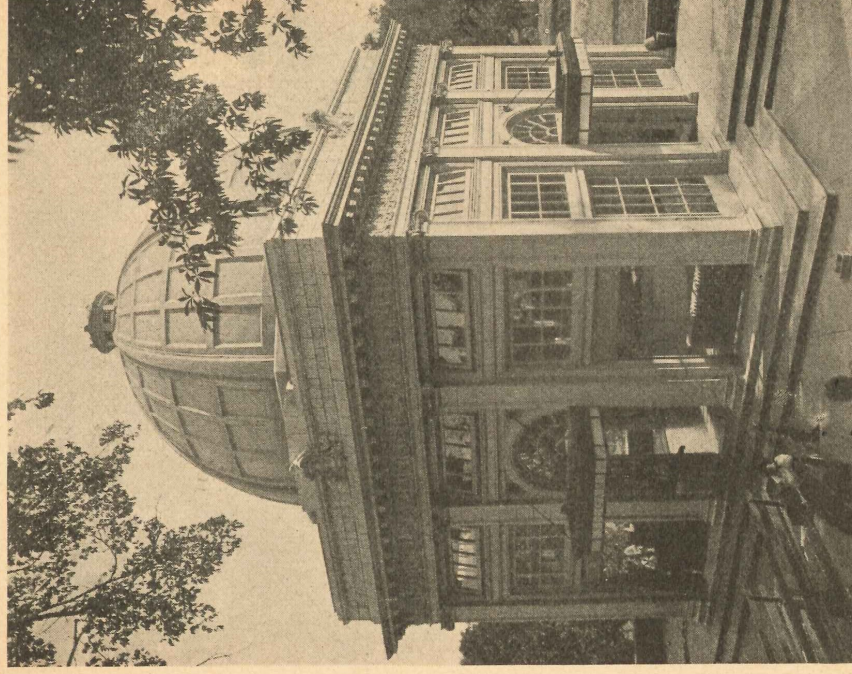
A Bit of Excelsior Springs, from the Tourist Park

Excelsior Springs—Capacity 110 cars; camp situated on "Carnation Hill," the western part of

Siloam Park, a beautiful wooded tract of 160

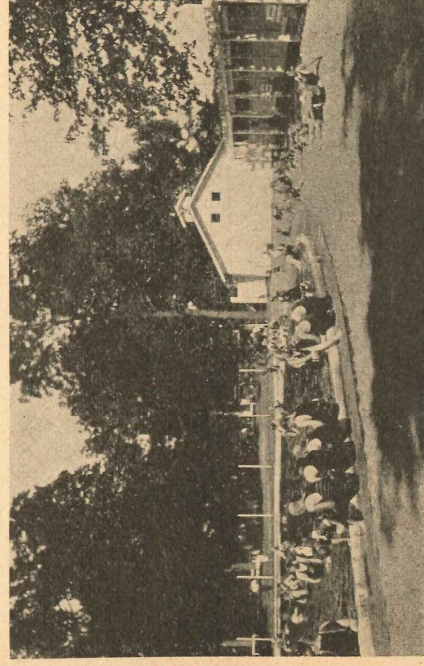
28

TOURIST CAMP MANUAL



Siloam Spring Pavilion, Excelsior Springs, Mo.

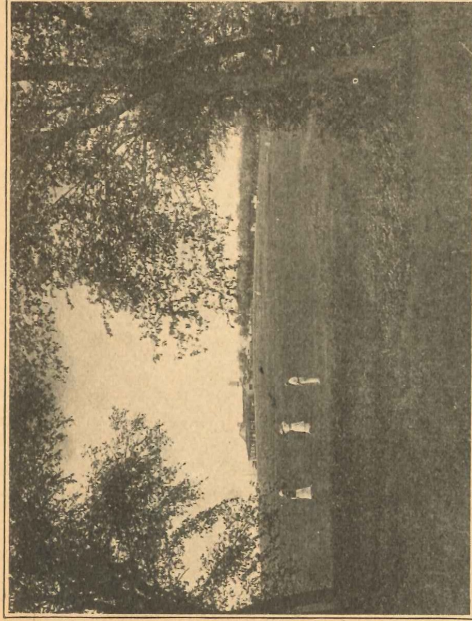
aces extending through the heart of the city, which the camp overlooks. There is plenty of shade, free community house, water, fuel and lights; perfect sanitation. Paved highway to Kansas City, 28 miles.



At Swimming Pool Entrance, Mauer's Lake, Excelsior Springs, Mo.

29

International Jefferson Highway



On the Famous Excelsior Springs Golf Course

Excelsior Springs, Missouri's National Resort, owes its fame to the curative properties of its many mineral springs—20 in all of four distinct types, recognized as the most varied and valuable group in the nation. Used singly or in combination, they are invaluable in the treatment of the many ailments caused by impoverished or impure blood, rheumatism, kidney and bladder troubles, all inflammatory or catarrhal conditions, biliousness, jaundice, constipation and ailments caused by torpid liver.

The city has all the modern "big city" comforts and conveniences and beautiful, restful rural surroundings. Nearly \$200,000 has been expended in the acquisition and embellishment of Siloam Park. Siloam Spring pavilion, wits its architectural setting, now half completed, has cost \$56,000.

Tourists will find an endless variety of accommodations and amusements. The four largest hotels cost over \$1,200,000; they offer every modern convenience and luxury. All have good orchestras, dancing and varied entertainments. There are scores of smaller hotels, boarding and apartment houses, rooms and furnished cottages at rates to suit the visitors' needs. There are all varieties of baths. The shops are up-to-date and can supply all requirements. As business runs all-year-round, prices in every line are reasonable and in sharp contrast with those of the usual short-season resort. All in and out-of-door recreations are available. The famous 18-hole golf course of the Excelsior Springs Golf Club, 6450 yards, par 73, bogey 82, is only a paved mile from the springs and is in the midst of the 500-acre country club district—Golf Hill. The quaint club house is completely equipped; luncheons served. Pro in charge. Green membership cards can be obtained by visiting golfers.

Maurer's Lake, 100 acres of forest and water, has a swimming pool, capacity 500 bathers; boating, fishing, dancing. Electric lighted camp grounds and cottages. Free wood and water. A most attractive place. Distance 1 mile.

Other amusements, theatres (the Beyer cost \$100,000), bowling alleys; band concerts, tennis and children's well equipped play ground in Siloam Park; beautiful walks and drives in every direction, in fact all recreations usual at a National resort.

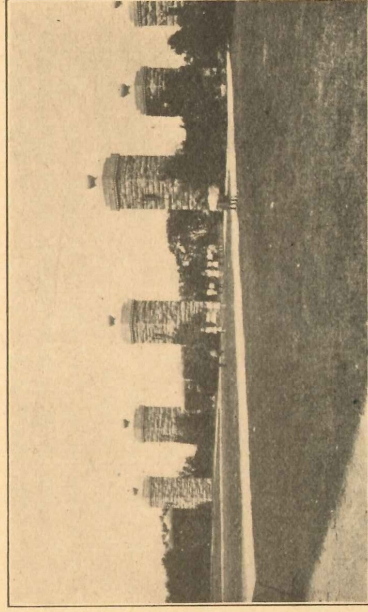
You will be very welcome.

30

TOURIST CAMP MANUAL

Liberty—Capacity 30 cars, electric lights, (Pop. 3097) comfort stations, shade, free fuel, tables and benches. Liberty is the seat of William Jewell College; also the State Odd Fellows Home. Next camp north 14 miles, south 14 miles.

Kansas City—Capacity 100 cars, electric lights, water, swimming pool, comfort stations, shade, free fuel, tables and benches, shelter tent, watchman. Next camp north 2 miles, south 25 miles.



Entrance to One of Kansas City's Beautiful Parks

Lees Summit—25-acre park adjacent to Jefferson Highway, electric lights, water, shower baths in town hall, comfort stations, shade, tables and benches. Next camp north 25 miles, south 34 miles.

Adrian—Capacity 15 cars, electric lights, (Pop. 955) water, comfort stations, shade, free fuel, tables and benches. Next camp north 34 miles, south 11 miles.

Butler—Capacity 15 cars, electric lights, (Pop. 2702) water, nice shelter house and rest rooms, free fuel, tables and benches. Next camp north 11 miles, south 14.7 miles.

Rich Hill—Capacity 100 cars, camp one block (Pop. 2261) from Highway. New camp to be equipped with lights, water, comfort stations, free fuel, tables and benches. Next camp north 14.7 miles, south 22.8 miles.

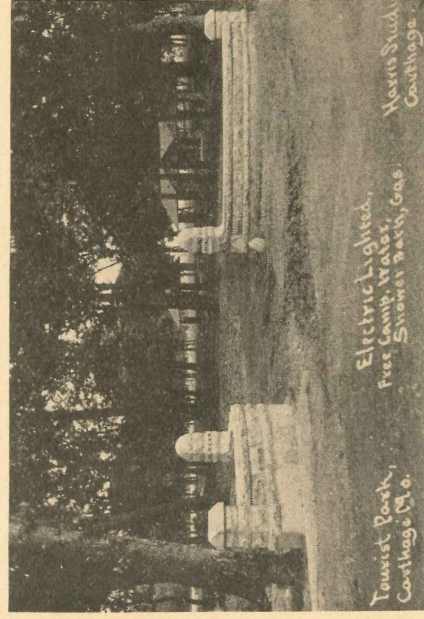
International Jefferson Highway

Nevada—Capacity 50 cars, electric lights, (Pop. 7139) water, comfort stations, shade, shower baths, gas for cooking, tables and benches. A different committee composed of Chamber of Commerce members visit our tourist camp each evening. Next camp north 22.8 miles, south 14.3 miles.

Sheldon—Capacity 200 cars, electric lights, (Pop. 544) water, comfort stations, shade, free fuel, tables and benches. Next camp north 14.3 miles, south 13 miles.

Lamar—Beautiful "Camp Park," with enclosing lawns, 'neath lovely shade trees. A commodious comfort station equipped with shower baths for both men and women. Surrounded by flowers and on the bank of a small stream. Free to automobile tourists. Next camp north 13 miles, south 13.9 miles.

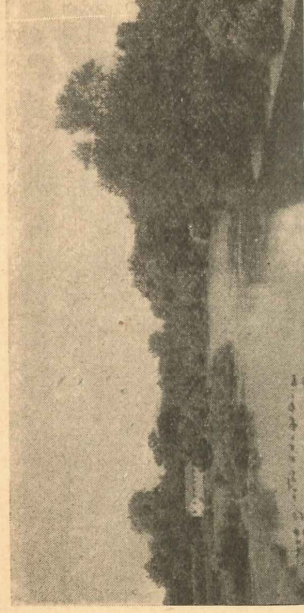
Jasper—Capacity 50 cars, electric lights, (Pop. 766) water, comfort stations, shade, free fuel, tables and benches. Next camp north 13.9 miles, south 11.3 miles.



Tourist Park, Carthage, Mo.

Carthage—Capacity 500 cars, electric lights, (Pop. 10668) water, shower baths, shade, free fuel, tables and benches. One-half mile from good fishing and adjacent to golf club. Located in the Ozarks, "The Land of a Million Smiles," Carthage is the center of a prosperous agricultural region. All the ordinary farm crops do well; in addition to that, this farming section is especially adapted to fruit-growing. Hundreds of carloads of strawberries are shipped out of this county every year. This is the home of the wonderful Carthage marble, the "miracle stone,"

Tourist Camp Manual



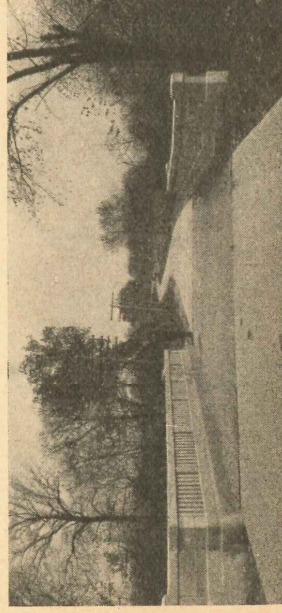
Near the Tourist Camp at Carthage, Mo.

recognized by architects everywhere as one of the finest building materials in the world. Great deposits of this stone are found here and it is quarried, dressed and shipped to all parts of the world. The beautiful state capitol at Jefferson City, costing \$3,500,000 is built of Carthage marble. Carthage is the northern gateway to the Ozarks. Next camp north 11.3 miles, south 9 miles.

Carterville—Camp at Lakeside Park, 2 miles east. Capacity 25 cars, water, comfort stations, shade and free fuel. Next camp north 9 miles, south 1 mile.

Webb City—Capacity 100 cars, electric lights, (Pop. 7807) water, comfort stations, shade, free fuel, tables and benches. Fine roads, public parks, fishing, zinc mines, wonderful agricultural and fruit lands, at the edge of the Ozark Playgrounds area. Next camp north 1 mile, south 6.5 miles.

Joplin—Capacity unlimited, electric lights, (Pop. 29902) city water, free swimming pool and shower baths, comfort stations, shade, free fuel, tables and benches. All roads leading from Joplin are hard-surfaced. The city styles itself "The Gateway to the Ozark Playgrounds" and thousands of tourists make this their stopping place, both on vacations and cross country tours. Next camp north 6.5 miles, south 22.6 miles.

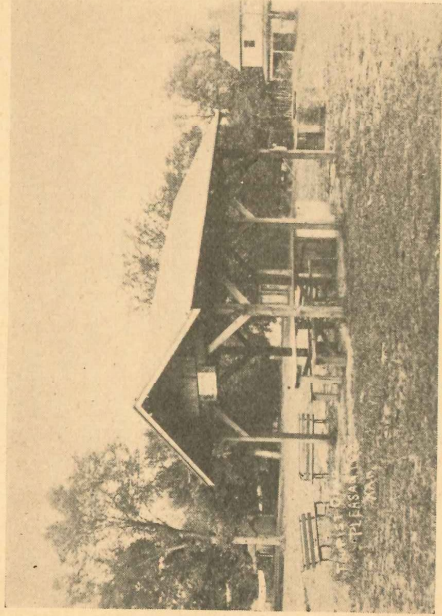


On the Jefferson Highway in the Ozarks

International Jefferson Highway

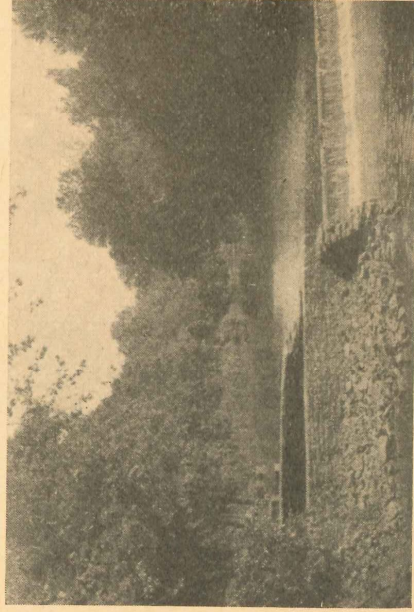
KANSAS

Louisburg—Capacity 25 cars, electric lights, (Pop. 556) water, comfort stations, shade, free fuel, tables and benches. Another camp in natural grove two miles from town on banks of stream. Next camp north 30 miles, south 32 miles.



Section of Tourist Camp, Pleasanton, Kan.

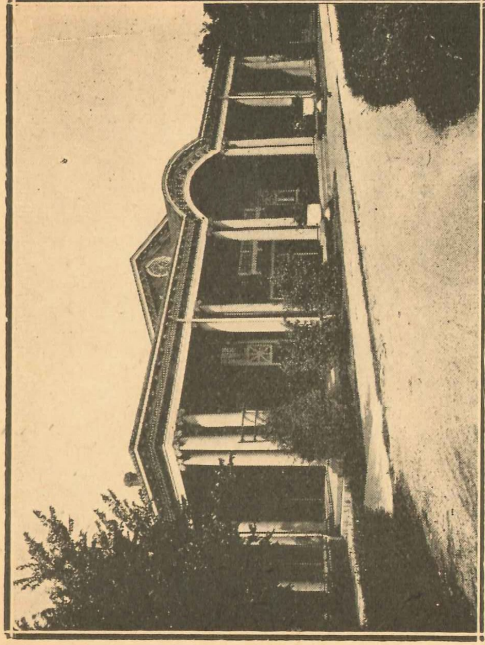
Pleasanton—Capacity 50 cars, electric lights, (Pop. 1291) water, shower baths, comfort stations, shade, natural gas for cooking, tables and benches. Next camp north 32 miles, south 15.4 miles.



A Beauty Spot on the Jefferson Highway in Kansas.

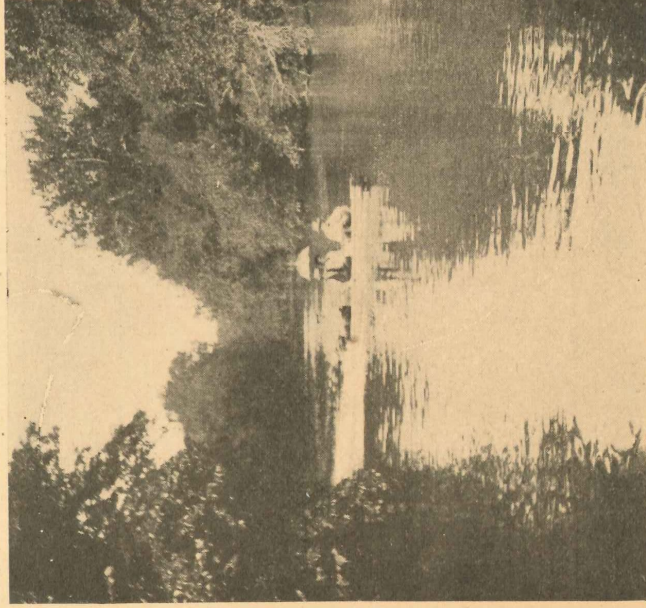
34

TOURIST CAMP MANUAL



Lincoln Park Auditorium, Pittsburg, Kans.

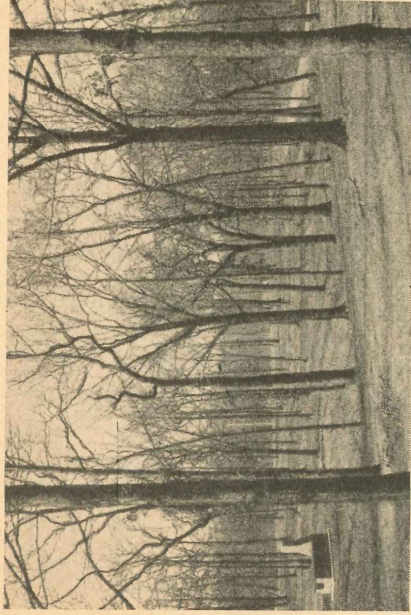
Pittsburg—Capacity 60 cars, electric lights, (Pop. 18340) water, comfort stations, shade, fuel, tables and benches. Part of 400 acre Municipal Park. Band concert Thursday evenings during summer months. Next camp north 50.4 miles, south 32 miles.



Boating and Fishing along the Jefferson Highway in Kansas.

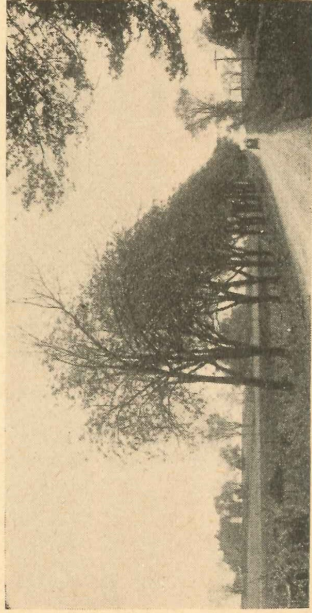
35

International Jefferson Highway



Tourist Camp, Pittsburg, Kansas

Galena—Capacity 100 cars, electric lights, (Pop. 4712) water, comfort stations, shade, free fuel, tables and benches. Next camp east 6 miles, west 7 miles.



On the Jefferson Highway in Kansas

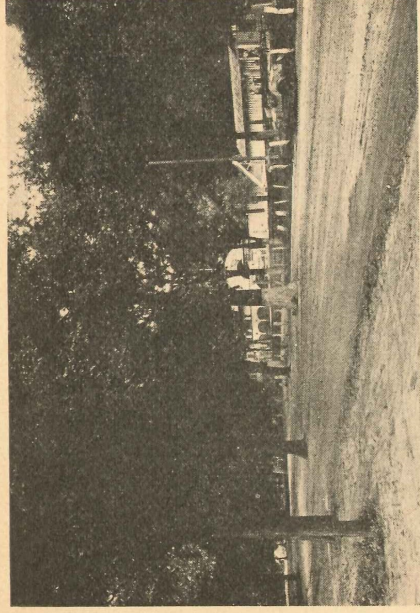
Baxter Springs—Capacity 35 cars, electric (Pop. 1398) lights, city water, shower baths, comfort stations, entire grounds shaded, large community kitchen. Next camp south 18.5 miles.



On the Jefferson Highway in the Ozark Country,

36

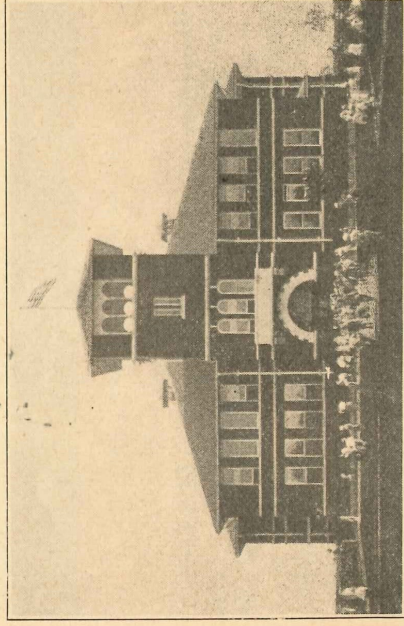
TOURIST CAMP MANUAL



Tourist Park, Miami, Oklahoma

OKLAHOMA

Miami—Capacity 150 cars, electric lights, (Pop. 6802) water, swimming pool and shower bath, comfort stations, shade, free fuel, tables and benches. The camp is situated in a 25-acre tract on the banks of the Neosho river. Next camp north 18.5 miles, south 17 miles.



High School, Afton, Oklahoma.

Afton—Capacity 15 cars, water, lights and (Pop. 1580) shade. Afton is a division point on the Frisco Railway. Good water, good schools, good churches. Next camp north 17 miles, west 14 miles.

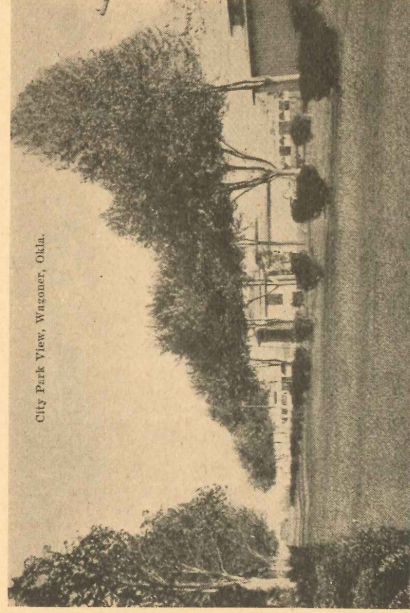
Vinita—Capacity 100 cars, electric lights, (Pop. 5010) water, comfort stations, shade, free fuel, tables and benches. Next camp east 14 miles, south 30.5 miles.

37

International Jefferson Highway

Pryor—Capacity 25 cars, electric lights, water, comfort stations and shade. Next camp north 30.5 miles, south 27.9 miles.

Wagoner—Capacity 30 cars, nominal registration fee charged for each car, electric lights, city water, shower baths, comfort stations, free fuel, tables and benches. Fine shade and public swimming pool. Care-taker in charge and police protection afforded. Next camp north 27.9 miles, south 19 miles.



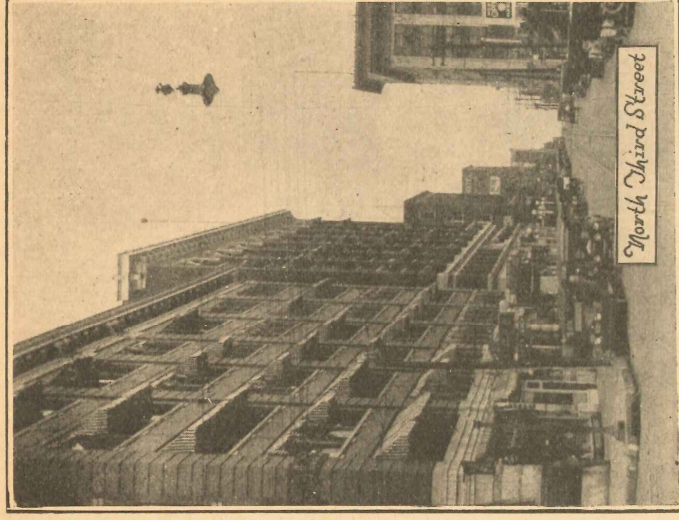
City Park View, Wagoner, Okla.

Muskogee—Capacity 200 cars. Muskogee's automobile tourist camp, built at an expense of \$3,000 by the Kiwanis club in 1921, ranks with the best of the middle west. A screened building, twelve gas plates, four big tables, with benches, electric lights, city water, sanitary toilets, and shower baths are among the features of the camp, located in beautiful Spaulding Park, seven blocks from business district. Next camp north 19 miles, south 38.8 miles.

Eufaula—Capacity 100 cars, water, comfort stations, shade. Next camp north 38.8 miles, south 16 miles.

Crowder—Capacity 30 cars, water, shade. Next camp north 16 miles, south 15.4 miles.

Tourist Camp Manual



Business Thorofare, Muskogee, Okla.

McAlester—Capacity 75 cars, water, comfort stations, shade, tables and benches. Next camp north 15.4 miles, south 60.7 miles.

Atoka—Capacity 100 cars, electric lights, water, shower baths, comfort stations, shade, free fuel, tables and benches, ovens and pavilion for use in case of rain. Atoka, the town where the great treaty that dissolved all Indian governments and allotted their lands was made. Now the city of magnificent homes, splendid churches and schools. Its educated and christian citizenship extend to the tourists of the world a welcome to its camping grounds. Next camp north 60.7 miles, south 36 miles.

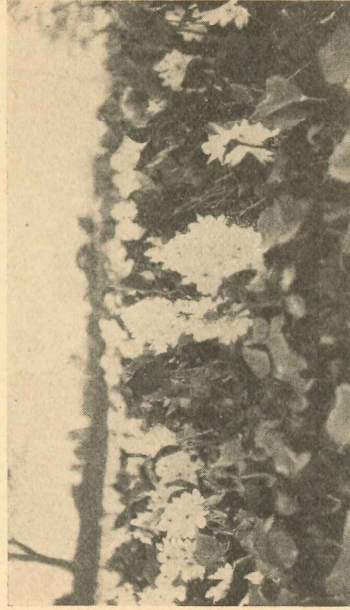
Durant—Capacity 50 cars, electric lights, water, shower baths, comfort stations, shade, free fuel, tables and benches. One of the best equipped camps in state. All Highways in Bryan County hard surfaced. Next camp north 36 miles, south 24.4 miles.

International Jefferson Highway

TEXAS

Denison—Capacity 300 cars, electric lights, (Pop. 17065) water, shower baths, comfort stations, shade, free fuel, tables and benches. Camp in Munson Park of 140 acres contains large lake with fine bathing facilities. Next camp north 24.4 miles, south 34 miles.

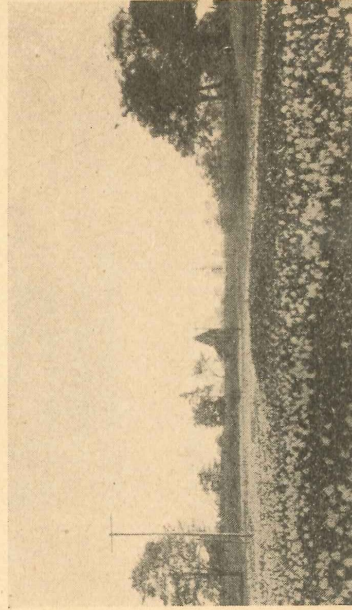
Bonham—Water, comfort stations, shade, (Pop. 6008) tables and benches. Next camp north 34 miles, south 19 miles.



A Field of Southern Flowers

Wolfe City—Twenty-one acres, electric lights, (Pop. 1859) water, comfort stations, shade, free fuel, tables and benches. Next camp north 19 miles, south 49 miles.

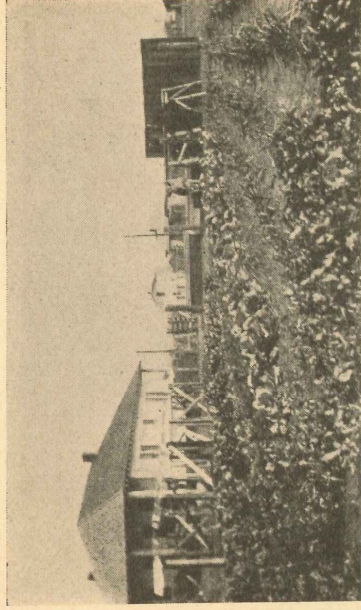
Sulphur Springs—Seventy acres, water, (Pop. 5558) swimming pool, comfort stations, tables and benches. Tourists welcome; highway information supplied by Chamber of Commerce. Next camp north 49 miles, east 44 miles.



Water Hyacinths, Common to the Southland

TOURIST CAMP MANUAL

Mt. Pleasant—Capacity 100 cars, electric lights, water, comfort stations, free fuel, shade, tables and benches. Mt. Pleasant is a city of 4100 people. It is the center of the famous fruit and



January Garden in the South

vegetable-growing counties of Texas. The people are hospitable and extend the welcome hand to strangers. The Chamber of Commerce has its office opposite post office. Our city is well equipped with hotels, restaurants and garages, capable of caring for all the public. We have beautiful Dellwood Park, noted for its famous waters and camping grounds for all tourists. Next camp west 44 miles, south 12 miles.

Pittsburg—Capacity 200 cars, water, comfort stations, shade, free fuel, tables and benches. Next camp north 12 miles, south 47.6 miles.

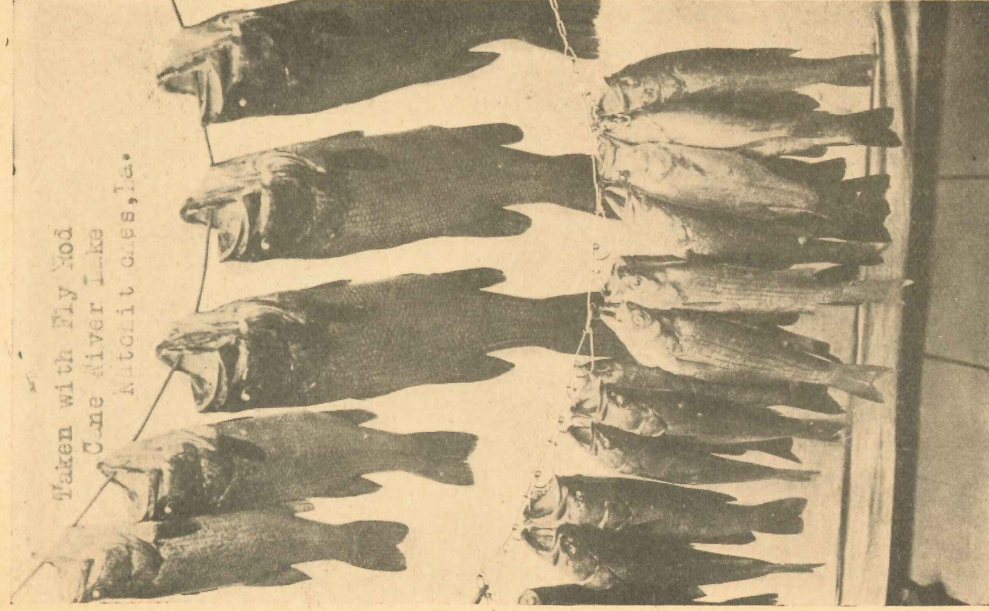
Longview—Capacity 50 cars, electric lights, (Pop. 5713) water, bathing in lake, comfort stations, plentiful shade, free fuel, tables and benches. Next camp west 47.6 miles, east 23.7 miles.

Marshall—Capacity 50 cars, water, comfort (Pop. 14271) stations, shade, free fuel, tables and benches. Roads are well improved throughout this locality, and can be traveled under all weather conditions. Next camp west 23.7 miles, east 44.2 miles.

International Jefferson Highway

LOUISIANA

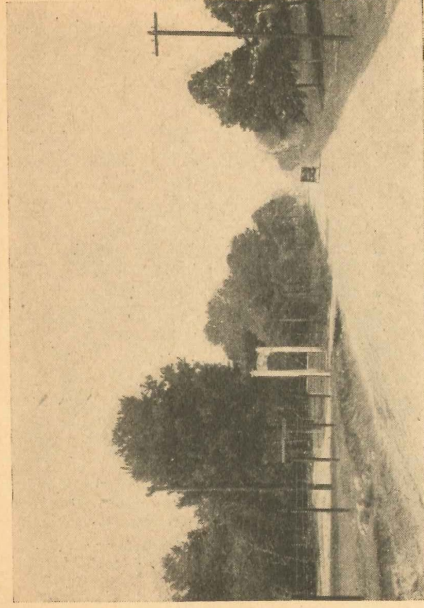
Shreveport—Capacity 100 cars, electric lights, water, comfort stations, ample shade, free fuel, natural gas, tables and benches. A site of 21 acres



situated on the Jefferson Highway within the city limits and just east of the Louisiana State Fair Grounds. Next camp west 44.2 miles, south 36.8 miles.

Mansfield—Pleasant camping grounds on either side of town, but no official camp. This locality raises two crops a year and there is plenty of good land to be had cheap. Next camp north 36.8 miles, south 60 miles.

TOURIST CAMP MANUAL



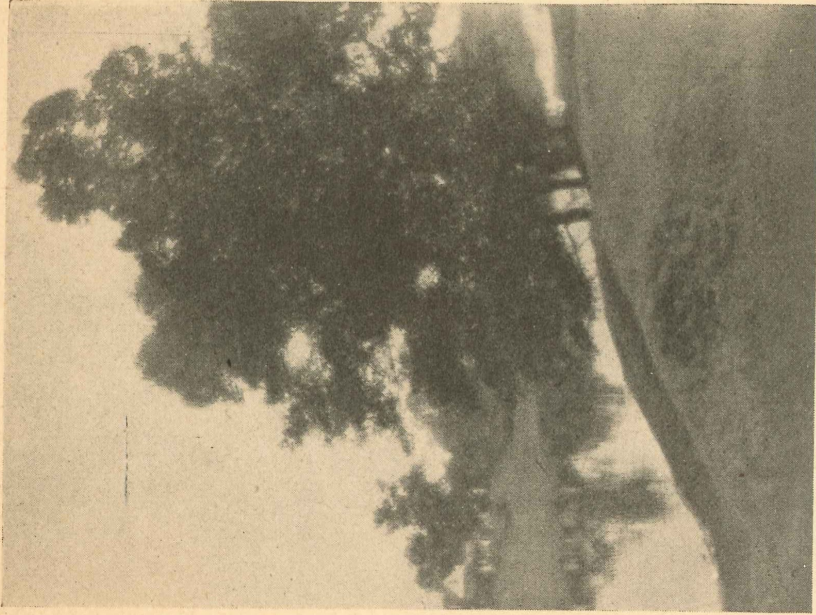
Entrance to Tourist Park, Natchitoches, Louisiana

Natchitoches—This tourist park is situated on the Jefferson Highway about ten blocks from the business center of the City of Natchitoches. Located on high ground among the pines it has natural drainage, beautiful drive ways and an abundance of shade trees. It is provided with electric lights, city water, sanitary drinking fountains, sanitary toilets and free fuel. It is under police protection and free to legitimate tourists. No permit is required for a visit of one week's duration. For a longer period special permission is required. The camp grounds are open at all hours of



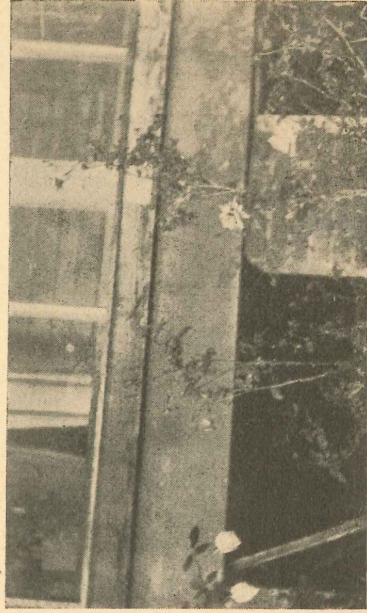
Along the Cane River In Louisiana

International Jefferson Highway



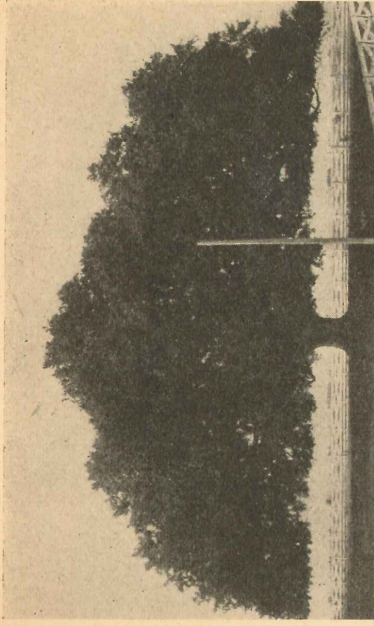
Cane River Lake, 35 Miles Long, Ideal for Boating,
Bathing and Fishing

the day and night. There is nothing whatsoever sold on the grounds, but within two blocks of the park the tourist can purchase almost anything he would likely desire. Four blocks east of the park is beautiful Cane River Lake, the famous fishing stream, thirty-five miles in length and noted for its black bass. Ideal for swimming, boating, fly-fishing and casting. Open season from June 1st



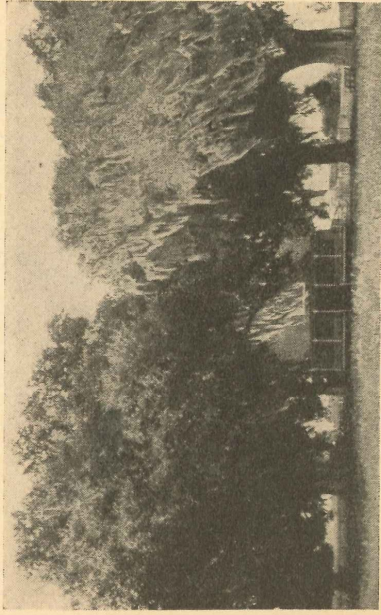
January Roses in Louisiana

TOURIST CAMP MANUAL



Specimen of Louisiana Live Oak

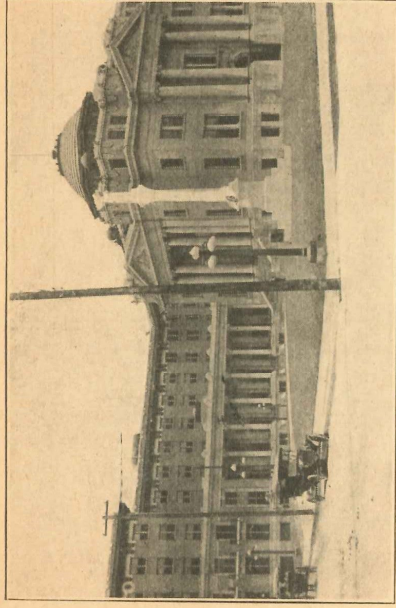
to March 1st and free to all observing the liberal rules and regulations established by the police jury. Motor and fishing boats can be rented at reasonable rates. Natchitoches is rich in historic lore and has a population of almost 5000 hospitable and warm-hearted people, every one of whom welcomes the stranger within her gates and does his utmost to make the visitor's stay pleasant and enjoyable. All tourists will please register with Chamber of Commerce. Next camp north 60 miles, south 24 miles.



"Oaks from whose branches garlands of Spanish Moss
and of Mystic Mistletoe Flaunted"

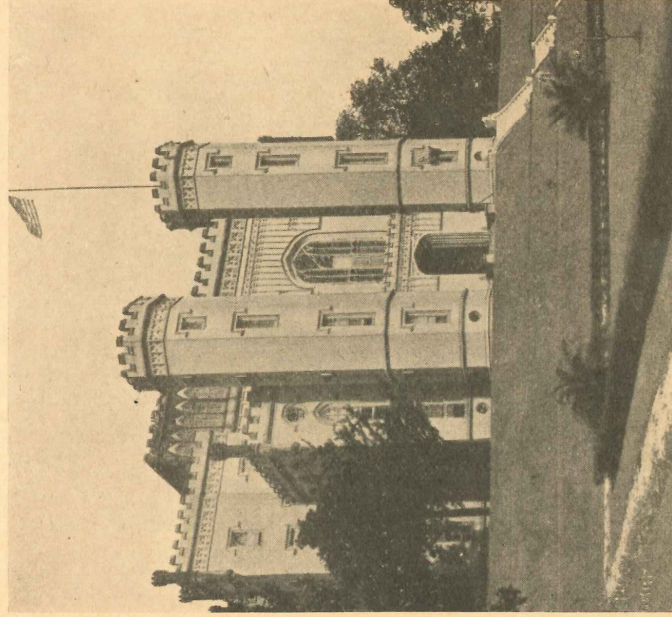
Montgomery—No established tourist camp, but ideal camping locations with fuel and water are easily accessible. Next camp north 24 miles, south 44 miles.

International Jefferson Highway



City Hall, Alexandria, La.

Alexandria—Capacity 50 cars, electric lights, water, shower baths, comfort stations, shade, free fuel, tables and benches, hunting, fishing, hot wells, golf links, etc. Next camp north 44 miles, south 36.4 miles.



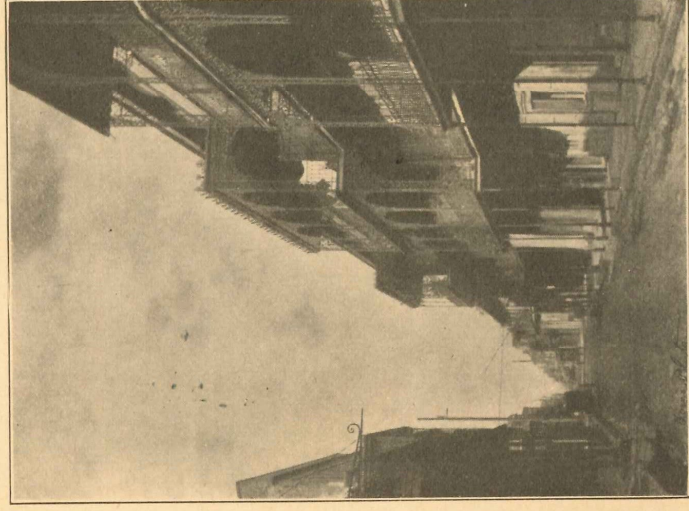
State House at Baton Rouge, Louisiana, overlooking Mississippi River

46

TOURIST CAMP MANUAL

Bunkie—Capacity 35 cars, electric lights, (Pop. 1763) comfort stations, shower baths, screened dining room, shelter for cooking. Camp conveniently situated for securing groceries, ice and any other necessities of the tourist. No effort will be spared to make the sojourn of the auto tourist pleasant in every way. Next camp north 36.4 miles, south 106 miles.

Baton Rouge—Permanent tourist camp contemplated. Until the site is established, tourists will be taken care of temporarily on vacant acreage near the city that will be convenient for them. Next camp north 106 miles, south 118.5 miles.



The Old French Quarter in New Orleans

New Orleans—Capacity unlimited, water, (Pop. 387219) shower baths for men and women, comfort stations, shade, free fuel, tables and benches.

47

International Jefferson Highway

SPRING TIME ALL THE TIME ON THE JEFFERSON HIGHWAY

No highway in America gives a more comprehensive idea of the natural beauty and vast resources of this continent than the famous and popular Jefferson Highway. This great north and south trafficway has been appropriately designated "All-the-Year-Vacation Route of America," bringing to mind the fact that it is Spring Time All the Time on the Jefferson Highway.

Here rustic beauty clasps hands with the busy marts of commerce and offers a panorama that is unsurpassed for variety, presenting in a fascinating manner localities of the greatest interest.

The 10,000-Lakes-Region of Minnesota and the Lake Regions of Northern Iowa are a paradise for the angler and abound in sports of varied character. The scenic grandeur of the Missouri-Arkansas Ozarks, called "The Land of a Million Smiles," is within easy access. Louisiana, the southern terminal state, with her industrial cities and vast agricultural sections, teems with history and tradition.

The Jefferson Highway touches the capital cities of three states and serves a population of 7,000,000 within a radius of less than 100 miles on either side.

Industrial centers of the seven states are traversed, embracing mining, manufacturing, as well as the large shipping centers of agriculture, which includes sugar, cotton, corn and wheat; 90 per cent of the varied resources of the nation are within easy reach of this main street of the Mississippi Valley.

It has been predicted that tourist travel over this highway will approximate 300,000 cars during the coming season. Tourists are welcome in every city on the line; over 100 free camps with modern conveniences have been provided.

Connections may be made at several points with east and west marked highways. Information gladly furnished by International Headquarters at St. Joseph, Mo.

All-the-Year Vacation Route of America
From Pine to Palm

JEFFERSON HIGHWAY

(International)

System of Pole Marking for Guiding the Traveler

The standard marking of the Jefferson Highway is made up of two (2) blue bands each three (3) inches wide and one (1) white band twelve (12) inches wide, the white band occupying the central position. Stencilled on the white band in two places on the pole are the black letters "J. H."

At intersecting roads on a straight-a-way, two poles are marked each side of the intersecting road.

About one-fourth ($\frac{1}{4}$) mile each way from an intersecting road, one pole is marked as a confirmation to the traveler that he is traveling on the correct route.

At turns in the road a large black letter is placed on the white band of the marking showing "R" for right hand turn or "L" for a left hand turn. Two poles are marked each way from the turn.

To warn of dangerous points in the Highway, a large black letter "D" is shown on the white band of the marking about 200 feet away from the danger point.

Railroad crossings are indicated by a large black letter "X" on the white band of the marking, one mark being placed about 200 feet each way from the railroad.

In the country the marks are placed five (5) feet above the ground while in the cities and towns they are placed seven (7) feet above the ground.